

Product datasheet for **RG214789**

CLECSF6 (CLEC4A) (NM_194447) Human Tagged ORF Clone

Product data:

Product Type: Expression Plasmids
Product Name: CLECSF6 (CLEC4A) (NM_194447) Human Tagged ORF Clone
Tag: TurboGFP
Symbol: CLEC4A
Synonyms: CD367; CLECSF6; DCIR; DDB27; HDCGC13P; hDCIR; LLIR
Mammalian Cell Selection: Neomycin
Vector: pCMV6-AC-GFP (PS100010)
E. coli Selection: Ampicillin (100 ug/mL)
ORF Nucleotide Sequence: >RG214789 representing NM_194447
Red=Cloning site Blue=ORF Green=Tags(s)

TTTTGTAATACGACTCACTATAGGGCGGCCGGAATTCGTCGACTGGATCCGGTACCGAGGAGATCTGCC
GCC**CGATCGCC**

ATGACTTCGAAATCACTTATGCTGAAGTGAGGTTCAAAAATGAATTCAGTCCTCAGGCATCAACACAG
CCTCTTCTGCAGTTTTCTTTCAAAAATATTCTCAGCTTCTTGAAAAAAGACTACAAAAGAGCTGGTTCA
TACAACATTGGAGTGTGTGAAAAAATATGCCCGTGAAGAGACAGCCTGGAGCTGTTGCCAAAGAAT
TGGAAGTCATTTAGTTCCAAGTCTACTTTATTTCTACTGAATCAGCATCTTGCCAAGACAGTGAGAAGG
ACTGTGCTAGAATGGAGGCTCACCTGCTGGTGATAAACTCAAGAAGAGCAGGATTTTCATCTCCAGAA
TCTGCAAGAAGAATCTGCTTATTTTGTGGGCTCTCAGATCCAGAAGGTCAGCGACATTGCAATGGGTT
GATCAGACACCATAAATGAAAGTTCCACATTCTGGCATCCAGTGGAGCCAGTATCCCAATGAGCGCT
GCGTTGTGCTAAATTTTCGTAATCACCCAAAAGATGGGGCTGGAATGATGTTAATTGTCTTGGTCTCA
AAGGTCAGTTTGTGAGATGATGAAGATCCACTTA

ACGCGTACGCGGCCGCTCGAG - GFP Tag - GTTTAA

Protein Sequence: >RG214789 representing NM_194447
Red=Cloning site Green=Tags(s)

MTSEITYAEVRFKNEFKSSGINTASSAVFFQKYSQLEKTKTKELVHTTLECVKKNMPVEETAWSCCPKN
WKSFSNCFYFISTESASWQDSEKDCARMEHLLVINTQEEQDFIFQNLQEESAYFVGLSDPEGQRHWQWV
DQTPYNESSTFWHPREPSDPNERCVVLLNFRKSPKRWGWNDVNCLGPQRSVCEMMKIHL

TRTRPLE - GFP Tag - V

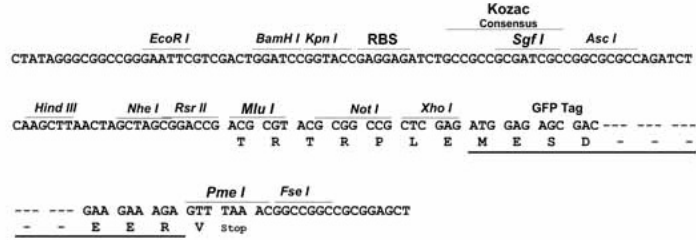
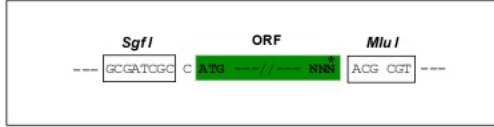
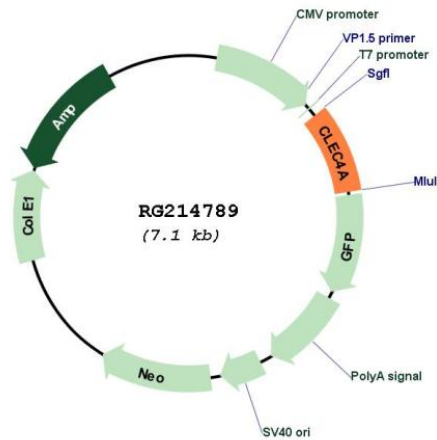
Restriction Sites: Sgfl-MluI



[View online »](#)

Cloning Scheme:

Cloning sites used for ORF Shutting:


Plasmid Map:


ACCN: NM_194447

ORF Size: 594 bp

OTI Disclaimer:	Due to the inherent nature of this plasmid, standard methods to replicate additional amounts of DNA in E. coli are highly likely to result in mutations and/or rearrangements. Therefore, OriGene does not guarantee the capability to replicate this plasmid DNA. Additional amounts of DNA can be purchased from OriGene with batch-specific, full-sequence verification at a reduced cost. Please contact our customer care team at custsupport@origene.com or by calling 301.340.3188 option 3 for pricing and delivery.
	The molecular sequence of this clone aligns with the gene accession number as a point of reference only. However, individual transcript sequences of the same gene can differ through naturally occurring variations (e.g. polymorphisms), each with its own valid existence. This clone is substantially in agreement with the reference, but a complete review of all prevailing variants is recommended prior to use. More info
OTI Annotation:	This clone was engineered to express the complete ORF with an expression tag. Expression varies depending on the nature of the gene.
Components:	The ORF clone is ion-exchange column purified and shipped in a 2D barcoded Matrix tube containing 10ug of transfection-ready, dried plasmid DNA (reconstitute with 100 ul of water).
Reconstitution Method:	<ol style="list-style-type: none"> 1. Centrifuge at 5,000xg for 5min. 2. Carefully open the tube and add 100ul of sterile water to dissolve the DNA. 3. Close the tube and incubate for 10 minutes at room temperature. 4. Briefly vortex the tube and then do a quick spin (less than 5000xg) to concentrate the liquid at the bottom. 5. Store the suspended plasmid at -20°C. The DNA is stable for at least one year from date of shipping when stored at -20°C.
RefSeq:	NM_194447.2 , NP_919429.2
RefSeq Size:	1167 bp
RefSeq ORF:	597 bp
Locus ID:	50856
UniProt ID:	Q9UMR7
Cytogenetics:	12p13.31
Protein Families:	Druggable Genome, Transmembrane
Gene Summary:	This gene encodes a member of the C-type lectin/C-type lectin-like domain (CTL/CTLD) superfamily. Members of this family share a common protein fold and have diverse functions, such as cell adhesion, cell-cell signalling, glycoprotein turnover, and roles in inflammation and immune response. The encoded type 2 transmembrane protein may play a role in inflammatory and immune response. Multiple transcript variants encoding distinct isoforms have been identified for this gene. This gene is closely linked to other CTL/CTLD superfamily members on chromosome 12p13 in the natural killer gene complex region. [provided by RefSeq, Jul 2008]