

## Product datasheet for **RG214786**

### Nav1.5 (SCN5A) (NM\_198056) Human Tagged ORF Clone

#### Product data:

Product Type:	Expression Plasmids
Product Name:	Nav1.5 (SCN5A) (NM_198056) Human Tagged ORF Clone
Tag:	TurboGFP
Symbol:	Nav1.5
Synonyms:	CDCD2; CMD1E; CMPD2; HB1; HB2; HBB2; HH1; ICCD; IVF; LQT3; Nav1.5; PFHB1; SSS1; VF1
Mammalian Cell Selection:	Neomycin
Vector:	pCMV6-AC-GFP (PS100010)
E. coli Selection:	Ampicillin (100 ug/mL)
ORF Nucleotide Sequence:	>RG214786 representing NM_198056. Blue=ORF Red=Cloning site Green=Tag(s)

```
GCTCGTTTAGTGAACCGTCAGAATTTGTAAACGACTCACTATAGGGCGCCGGGAATTCGTCGACTG
GATCCGGTACCGAGGAGATCTGCCGCCGCGATCGCC
ATGGCAAACCTTCTATTACCTCGGGCACCAGCAGCTTCCGCAGGTTCCACACGGGAGTCCCTGGCAGCC
ATCGAGAAGCGCATGGCGGAGAAGCAAGCCCGCGGCTCAACCACCTTGCAGGAGAGCCGAGAGGGGCTG
CCCAGGAGGAGGCTCCCGGCCCCAGCTGGACCTGCAGGCTCCAAAAAGCTGCCAGATCTCTATGGC
AATCCACCCCAAGAGCTCATCGGAGAGCCCTGGAGGACCTGGACCCCTTCTATAGCACCCAAAAGACT
TTCATCGTACTGAATAAAGGCAAGACCATCTCCGGTTCAGTCCACCAACGCCTTGTATGTCCTCAGT
CCCTTCCACCCCATCCGGAGAGCGGCTGTGAAGATTCTGGTTCAGTCCGCTTCAACATGCTCATCATG
TGCACCATCCTCACCACCTGCGTGTTCATGGCCAGCAGCACCCTCCACCCTGGACCAAGTATGTCGAG
TACACCTTCAACGCCATTTACACCTTTGAGTCTCTGGTCAAGATTCTGGCTCGAGGCTTCTGCCTGCAC
GCGTTCACCTTTCGCGGACCCATGGAAGTGGCTGGACTTTAGTGTGATTATCATGGCATAACAACCT
GAATTTGTGGACCTGGGCAATGTCTCAGCCTTACGCACCTCCGAGTCTCCGGGCCCTGAAAACATA
TCAGTCATTTTCAAGGCTGAAGACCATCGTGGGGCCCTGATCCAGTCTGTGAAGAAGCTGGCTGATGTG
ATGGTCTCACAGTCTTCTGCCTCAGCGTCTTTGCCCTCATCGGCTGCAGCTTTCATGGGCAACCTA
AGGCACAAGTGCCTGCGCAACTTACAGCGCTCAACGGCACCAACGGCTCCGTGGAGGCCGACGGCTTG
GTCTGGGAATCCCTGGACCTTTACCTCAGTGTCCAGAAAATTACCTGCTCAAGAAGCCACCTCTGAT
GTGTTACTGTGTGGAAACAGCTCTGACGCTGGGACATGTCCGGAGGGCTACCGGTGCCTAAAGGCAGGC
GAGAACCCTGACCGGCTACACCAGCTTCGATTCTTTGCCTGGGCTTTCTTGCACTCTTCCGCCTG
ATGACGCAGGACTGCTGGGAGCGCTCTATCAGCAGACCCTCAGGTCGCGAGGGAAGATCTACATGATC
TTCTTCAATGCTTGTATCTTCTGGGGTCTTCTACCTGGTGAACCTGATCCTGGCCGTGGTCGCAATG
GCCTATGAGGAGCAAAACCAAGCCACCATCGCTGAGACCGAGGAGAAGGAAAAGCGCTTCCAGGAGGCC
ATGGAAATGCTCAAGAAAGAACACGAGGCCCTCACCATCAGGGGTGTGGATACCGTGTCCCGTAGCTCC
TTGGAGATGTCCCTTTGGCCCCAGTAAACAGCCATGAGAGAAGAAGCAAGAGGAGAAAACGGATGTCT
TCAGGAAGTGAAGAGTGTGGGAGGACAGGCTCCCAAGTCTGACTCAGAAGATGGTCCAGAGCAATG
```



[View online »](#)

AATCATCTCAGCCTACCCGTGGCCTCAGCAGGACTTCTATGAAGCCACGTTCCAGCCGCGGGAGCATT  
 TTCACCTTTTCGACGGCGAGACCTGGGTTCTGAAGCAGATTTTGCAGATGATGAAAACAGCACAGCGGGG  
 GAGAGCGAGAGCCACCGCACATCACTGCTGGTGCCTGGCCCCTGCGCCGGACCAGTGCCAGGGGACAG  
 CCCAGTCCCGAACTCGGCTCTGGCCACGCCCTCCATGGCAAAAAGAACAGCACTGTGGACTGCAAT  
 GGGGTGGTCTCATTACTGGGGCAGGCGACCCAGAGGCCACATCCCAGGAAGCCACCTCCTCCGCCCT  
 GTGATGCTAGAGCACCCGCCAGACACGACCACGCCATCGGAGGAGCCAGGCGGGCCCCAGATGCTGACC  
 TCCAGGCTCCGTGTGTAGATGGCTTCGAGGAGCCAGGACACGGCAGCGGGCCCTCAGCCAGATCAGC  
 GTCCTCACAGCCACTGGAAGAGTTAGAGGAGTCTCGCCACAAGTGTCCACCATGCTGGAACCGTCTC  
 GCCCAGCGCTACCTGATCTGGGAGTGTGCCCGCTGTGGATGTCCATCAAGCAGGGAGTGAAGTTGGTG  
 GTCATGGACCCGTTACTGACCTCACCATCACTATGTGCATCGTACTCAACACACTCTTCATGGCGCTG  
 GAGCACTACAACATGACAAGTGAATTCGAGGAGATGCTGCAGGTGCGAAACCTGGTCTTCACAGGGATT  
 TTCACAGCAGAGATGACCTTCAAGATCATTGCCCTCGACCCTACTACTCTTCAACAGGGCTGGAAC  
 ATCTTCGACAGCATCATCGTCATCCTTAGCCTCATGGAGCTGGGCCTGTCCCGCATGAGCAACTGTGCG  
 GTGCTGCGCTCCTCCGCTGCTGCGGGTCTTCAAGCTGGCCAAATCATGGCCACCCTGAACACTC  
 ATCAAGATCATCGGAACTCAGTGGGGCAGTGGGAACTGACACTGGTGTAGCCATCATCGTGTTC  
 ATCTTTGCTGTGGTGGGCATGCAGCTCTTTGGCAAGAAGTACTCGGAGCTGAGGGACAGGACTCAGGC  
 CTGCTGCCTCGTGGCAGATGATGGACTCTTTTCATGCCTTCTCATCATCTTCCGCATCCTCTGTGGA  
 GAGTGGATCGAGACCATGTGGACTGCATGGAGGTGTGCGGGCAGTATTATGCCTGCTGGTCTTCTTG  
 CTTGTTATGGTCATTGGCAACCTTGTGGTCTGAACTCTTCTGGCCTTGTGCTCAGCTCCTTCAGT  
 GCAGACAACTCACAGCCCTGATGAGGACAGAGAGATGAACAACCTCCAGCTGGCCCTGGCCCGCATC  
 CAGAGGGGCTGCGCTTTGTCAAGCGGACCCTGGGATTTCTGCTGTGGTCTCCTGCGGCAGCGGCT  
 CAGAAGCCCGCAGCCTTGGCCCGCAGGCGAGCTGCCAGCTGCATTGCCACCCCTACTCCCCGCCA  
 CCCCCAGAGACGGAGAAGGTGCCTCCCACCCGCAAGGAAACACGGTTTGAGGAAGCGCAACACAGGC  
 CAGGGCACCCCCGGGATCCAGAGCCCGTGTGTGCCATCGCTGTGGCCGAGTCAAGACACAGTACGAC  
 CAAGAAGAGGATGAGGAGAACAGCCTGGCACGGAGGAGTCCAGCAAGCAGCAGGAATCCCAGCCT  
 GTGTCCGTGGCCAGAGGCCCTCCGATTCCAGGACCTGGAGCCAGGTGTGAGCGACTGCCTCCTCT  
 GAGGCCGAGGCCAGTGCATCTCAGGCCGACTGGCGGCAGCAGTGGAAAGCGGAACCCAGGCCCCAGGG  
 TGCGGTGAGACCCAGAGGACAGTTGCTCCGAGGGCAGCACAGCAGACATGACCAACACCCTGAGCTC  
 CTGGAGCAGATCCCTGACCTCGGCCAGGATGTCAAGGACCCAGAGGACTGCTTCACTGAAGGCTGTGTC  
 CGGCGTGTCCCTGCTGTGCGGTGGACACCACACAGGCCCCAGGGAAGGTCTGGTGGCGGTTGCGCAAG  
 ACCTGCTACCACATCGTGGAGCACAGCTGGTTCGAGACATTCATCATCTTCATGATCCTACTCAGCAGT  
 GGAGCGCTGGCCTTCGAGGACATCTACCTAGAGGAGCGGAAGACCATCAAGGTTCTGCTTGAATATGCC  
 GACAAGATGTTACATATGTCTTCGTGCTGGAGATGCTGCTCAAGTGGGTGGCCTACGGCTTCAAGAAG  
 TACTTCACCAATGCCTGGTGTGGTCTGACTTCTCATCGTAGACGTCTCTGTTGCTCAGCCTGGTGGCC  
 AACACCCTGGGCTTTGCCGAGATGGGCCCATCAAGTCACTGCGGACGCTGCGTGCCTCCGCTCCTG  
 AGAGCTGTGCAGATTTGAGGGCATGAGGGTGGTGGTCAATGCCTGGTGGGCGCCATCCCGTCCATC  
 ATGAACGCTCCTCCTGCTGCTCATCTTCTGGCTCATCTCAGCATCATGGCGTGAACCTCTTTGCG  
 GGAAGTTTGGGAGTGCATCAACCAGACAGAGGGAGACTTGCCTTTGAACTACACCATCGTGAACAAC  
 AAGAGCCAGTGTGAGTCTTGAACCTGACCGGAGAATTGACTGGACCAAGGTGAAAGTCAACTTTGAC  
 AACGTGGGGGCCGGTACCTGGCCCTTCTGCAGGTGGCAACATTTAAAGGCTGGATGGACATTATGTAT  
 GCAGCTGTGGACTCCAGGGGTATGAAGAGCAGCCTCAGTGGGAATAACAACCTTACATGTACATCTAT  
 TTTGTCAATTTTATCATCTTTGGGTCTTTCTTACCCTGAACCTCTTATTGGTGTATCATTTGACAAC  
 TTCAACCAACAGAAGAAAAAGTTAGGGGGCCAGGACATCTTCATGACAGAGGAGCAGAAGAAGTACTAC  
 AATGCCATGAAGAAGCTGGGCTCCAAGAAGCCCCAGAAGCCATCCCACGGCCCCGAACAAGTACCAG  
 GGCTTCATATTCGACATTTGACCAAGCAGGCTTTGACGTCACCATCATGTTTCTGATCTGCTTGAAT  
 ATGGTGACCATGATGGTGGAGACAGATGACCAAGTCTGAGAAAATCAACATCTTGCCCAAGATCAAC  
 CTGCTCTTTGTGGCCATCTTACAGGCGAGTGTATTGTCAAGCTGGCTGCCCTGCGCCACTACTACTTC  
 ACCAACAGCTGGAATATCTTCGACTTCGTGGTTGTATCCTCTCCATCGTGGGCACTGTGCTCTCGGAC  
 ATCATCCAGAAGTACTTCTTCTCCCCGACGCTCTTCCGAGTCATCCGCTGGCCCGAATAGGCCGCATC  
 CTCAGACTGATCCGAGGGGCAAGGGGATCCGCACGCTGCTCTTTGCCCTCATGATGTCCCTGCCTGCC  
 CTCTTCAACATCGGGCTGCTGCTCTTCTCGTCATGTTTCACTCCATCTTTGGCATGGCCAACCTTC  
 GCTTATGTCAAGTGGGAGGCTGGCATCGACGACATGTTCAACTCCAGACCTTCGCCAACAGCATGCTG

```

TGCTCTTCCAGATCACCACGTCGGCCGGCTGGGATGGCCTCCTCAGCCCCATCCTCAACACTGGGCCG
CCCTACTGCGACCCCACTCTGCCAACAGCAATGGCTCTCGGGGGGACTGCGGGAGCCAGCCGTGGGC
ATCCTCTTCTTACCACCTACATCATCATCTCCTTCTCATCGTGGTCAACATGTACATTGCCATCATC
CTGGAGAACTTACGCGTGGCCACGGAGGAGAGCACCGAGCCCCTGAGTGAGGACGACTTCGATATGTTT
TATGAGATCTGGGAGAAATTTGACCCAGAGGCCACTCAGTTTATTGAGTATTCGGTCTGTCTGACTTT
GCCGATGCCCTGTCTGAGCCACTCCGTATCGCCAAGCCCAACAGATAAGCCTCATCAACATGGACCTG
CCCATGGTGAGTGGGGACCGCATCCATTGCATGGACATTCTCTTGCCTTACCAAAAAGGGTCTGGGG
GAGTCTGGGGAGATGGACGCCCTGAAGATCCAGATGGAGGAGAAGTTCATGGCAGCCAACCCATCCAAG
ATCTCCTACGAGCCCATCACCACCACACTCCGGCGCAAGCACGAAGAGGTGTGCGCCATGGTTATCCAG
AGAGCCTTCCGCAGGCACCTGCTGCAACGCTCTTTGAAGCATGCCTCCTTCTTCCGTGAGCAGGCG
GGCAGCGGCTCTCCGAAGAGGATGCCCTGAGCGAGAGGGCCTCATCGCTACGTGATGAGTGAGAAC
TTCTCCGACCCCTTGGCCACCCTCCAGCTCCTCATCTCCTCCACTTCTTCCACCCTCCTATGAC
AGTGTACTAGAGCCACCAGCGATAACCTCCAGGTGCGGGGTCTGACTACAGCCACAGTGAAGATCTC
GCCGACTTCCCCCTTCCGGACAGGACCGTGAGTCCATCGTG
AGCGGACCGACGCGTACGCGGCCGCTCGAG - GFP Tag - GTTTAAAC
    
```

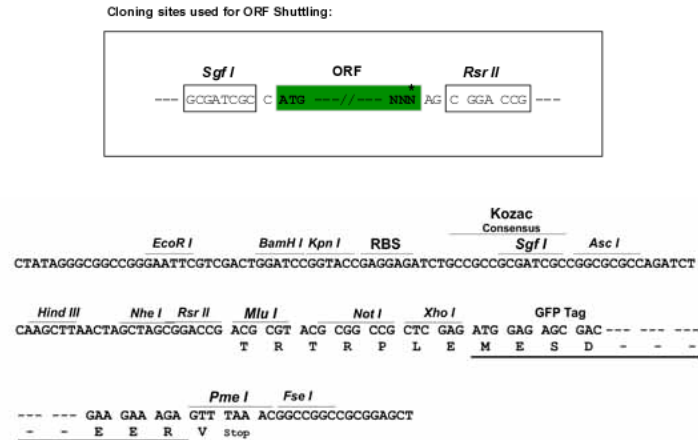
**Protein Sequence:**

>Peptide sequence encoded by RG214786  
 Blue=ORF Red=Cloning site Green=Tag(s)

```

MANFLLPRGTSFRFTRESLAIEKRMAEKQARGSTTLQESREGLPEEEAPRPQLDLQASKKLPDLYG
NPPQELIGELEDLDPFYSTQKTFIVLNKGKTI FRFSATNALYVLSPFHPIRRAAVKILVHSLFNMLIM
CTILTNCVFMAQHDPPTWKYVEYFTTAIYTFESLVKILARGFCLHAFTFLRDPWNWLDVSVIIMAYTT
EFVDLGNVSALRTRFVLRALKTISVISGLKTI V GALIQSVKKLADVMVLTVFCLSVFALIGLQLFMGNL
RHKCVRNFTALNGTNGSVEADGLVWESLDLYLSDPENYLLKNGTSDVLLCGNSSDAGTCEGYRCLKAG
ENPDHGYTSFDSFAWFLALFRLMTQDCWERLYQQTLSRAGKIYMIFFMLVIFLGSFYLVNLI LAVVAM
AYEEQNQATIAETEEKEKRFQEAMEMLKKEHEALTIRGVDTVSRSSLEMSPLAPVNSHERRSKRRKMS
SGTEECGEDRLPKSDSEDPGRAMNHL SL TRGLSRTSMKPRSSRGSIFTRRRDLGSEADFADDENSTAG
EESHRTSLLVPWPLRRTSAQGQPSPGTSAPGHALHGKKNSTVDCNGVVSLLAGDPEATSPGSHLLRP
VMLEHPPDPTTPEEPGGPQMLTSQAPCVDFEEPGARQRALSAVSVLTSALEELESRHKCPPCWNL
AQRYL IWECCPLWMSIKQGVKLVMDPFDLTIITMCIVLNTLFMALEHYNMTSEFEEMLVQGNLVFTGI
FTAEMTFKIIALDPYFYFQQGWNIFDSIIVILSLMELGLSRMSNLSVLRFRLLRVFKLAKSWPTLNTL
IKIIGNSVGLGNLTLVLAIVFIFAVVGMQLFGKNYSEL RSDSGLLPRWHMDDFFHAFLLIIFRILCG
EWIETMWCMEVSGQLCLLVLLVMVIGNLVVLNLFALLLSFSADNL TAPDEDREMNNLQLALARI
QRGLRFVKRTTWDFCCGLLRQPQKPAALAAQQQLPSCIATPSPPPPTEKVPTRKETRFEEGEQPG
QGTGDPPEPVCVPIAVAESDQDEEENSLGTEEESSKQESQPVSGGPEAPPDSRTWSQVSATASS
EAEASASQADWRQWKAEPQAPGCGETPEDSCSEGSTADMTNTAELLEQIPDLGQDVKDPEDCFTEGCV
RRCPCAVDTTQAPGKVVWRLRKYHIVEHSWFETFIIFMILLSSGALAFEDIYLEERKTIKVLLEYA
DKMFTYVFLVLEMLLKWVAYGFKYFTNAWCWLDLFLVDVSLVSLVANTLGAEMGPIKSLRTLRLRPL
RALSRFEGMRVVNALVGAIPSIMNVLLVCLIFWLIFSIMGVNLFAGKFGRCINQTEGDLPLNYTIVNN
KSQCESLNLGELYWTKVKNFNDVNGAGYLALLQVATFKGWDIMYAAVDSRGEYEQPQWEYNLYMYIY
FVIFIIFGSFFTLNLFIVIIDNFNQKKLGGQDIFMTEEQKKYNNAMKKLGSKPKQKIPRPLNKYQ
GFIFDIVTKQAFDVTIMFLICLNMVMMVETDDQSPEKINILAKINLLFVAIFTGECIVKLAALRHYYF
TNSWNIFDFVVVILSIVGTVLSDIQKYFFSPTLFRVIRLARIGRILRLIRGAKGIRTLFALMMSLPA
LFNIGLLLFLVMFIYSIFGMANFAYVKEAGIDDMFNQTFANSMLCLFQITTSAGWDGLLSPILNTGP
PYCDPTLPNSNGSRGDCGSPAVGILFFTTYIIISFLIVNMYIAIILENF SVATEESTEPLSEDDFDMF
YEIWEKFDPEATQFIEYSVLSDFADALSEPLRIAKPNQISLINMDLPMVSGDRIHCMIDLFAFTKRVLG
ESGEMDALKIQMEEFMAANPSKISYEPITTTLRRKHVEVSAMVIQRAFRRHLLQRSLKHASFLFRQQA
GSGLSEEDAPERGLIAYMSENF SRPLGPPSSSISSTSFPPSYDSVTRATSDNLQVRGSDYSHSEDL
ADFPPSPDRDRESIV
SGPTRTRPLEMESDESGLPAMEIECRITGTLNGVEFELVGGGEGTPEQGRMTNKMSTKGALTFSPYLL
SHVMGYGFYHFGTYPSGYENPFLHAINGGYTNTRIEKYEDGGVLHVFSYSRYEAGRIVIGDFKVMGTGF
PEDSVIFTDKIIRS NATVEHLHPMGDNDLDGSFTRTFLRDGGYSSVVD SHMHFKSAIHPSILQNGGP
MFAFRRVEEDHSNTELGIVEYQHAFKTPDADAGEERV
    
```

Restriction Sites: SgfI-RsrII

**Cloning Scheme:**


**ACCN:** NM\_198056

**ORF Size:** 6048 bp

**OTI Disclaimer:** The molecular sequence of this clone aligns with the gene accession number as a point of reference only. However, individual transcript sequences of the same gene can differ through naturally occurring variations (e.g. polymorphisms), each with its own valid existence. This clone is substantially in agreement with the reference, but a complete review of all prevailing variants is recommended prior to use. [More info](#)

**OTI Annotation:** This clone was engineered to express the complete ORF with an expression tag. Expression varies depending on the nature of the gene.

**Components:** The ORF clone is ion-exchange column purified and shipped in a 2D barcoded Matrix tube containing 10ug of transfection-ready, dried plasmid DNA (reconstitute with 100 ul of water).

**Reconstitution Method:**

1. Centrifuge at 5,000xg for 5min.
2. Carefully open the tube and add 100ul of sterile water to dissolve the DNA.
3. Close the tube and incubate for 10 minutes at room temperature.
4. Briefly vortex the tube and then do a quick spin (less than 5000xg) to concentrate the liquid at the bottom.
5. Store the suspended plasmid at -20°C. The DNA is stable for at least one year from date of shipping when stored at -20°C.

**RefSeq Size:** 8527 bp

**RefSeq ORF:** 6051 bp

**Locus ID:** 6331

**UniProt ID:** [Q14524](#)

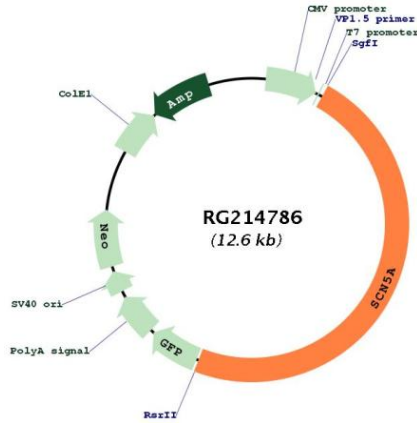
**Cytogenetics:** 3p22.2

**Protein Families:** Druggable Genome, Ion Channels: Sodium, Transmembrane

**MW:** 227 kDa

**Gene Summary:** The protein encoded by this gene is an integral membrane protein and tetrodotoxin-resistant voltage-gated sodium channel subunit. This protein is found primarily in cardiac muscle and is responsible for the initial upstroke of the action potential in an electrocardiogram. Defects in this gene are a cause of long QT syndrome type 3 (LQT3), an autosomal dominant cardiac disease. Alternative splicing results in several transcript variants encoding different isoforms. [provided by RefSeq, Jul 2008]

**Product images:**



Circular map for RG214786