

## Product datasheet for **RG214777**

### **RBM15 (NM\_022768) Human Tagged ORF Clone**

#### **Product data:**

Product Type:	Expression Plasmids
Product Name:	RBM15 (NM_022768) Human Tagged ORF Clone
Tag:	TurboGFP
Symbol:	RBM15
Synonyms:	OTT; OTT1; SPEN
Mammalian Cell Selection:	Neomycin
Vector:	pCMV6-AC-GFP (PS100010)
E. coli Selection:	Ampicillin (100 ug/mL)



[View online »](#)

**ORF Nucleotide Sequence:**

>RG214777 representing NM\_022768  
 Red=Cloning site Blue=ORF Green=Tags(s)

TTTTGTAATACGACTCACTATAGGGCGGCCGGGAATTCGTCGACTGGATCCGGTACCGAGGAGATCTGCC  
 GCC**CGCATCGCC**

ATGAGGACTGCGGGCGGGACCCTGTGCCGCGCGGAGTCCAAGATGGCGCGTGGCGTTCCGCTGTGTG  
 AAACGAGCGCGGGCGGGGTTACTCAGCTCCGCGGAGACGACCTCCGACGACCCGCAACAATGAAGGG  
 AAAAGAGCGCTCGCCAGTGAAGGCCAAACGCTCCCGTGGTGGTGAAGGACTCGACTTCCCGCGGTGAGCGG  
 AGCAAGAAGTTAGGGGGCTCTGGTGGCAGCAATGGGAGCAGCAGCGAAAGACCGATAGCGGCGGTGGGT  
 CGCGGGGAGTCTCCACCTGGACAAGTCCAGCAGTGGAGGTGGCAGCCGCGAGTATGATACCGGTGGGG  
 CAGCTCCAGTAGCCGCTTGCATAGTTATAGCTCCCGAGCACAAAAATCTTCGGGCGGGGGCAGTCCG  
 CGCAGCAGCTCCCGGGTGGAGGCGGGGAGTACGTTCTCTGGGCGCCTCTCAGCTCCCGCGCGG  
 GGGACGGCGCGGAATAACAAGACTCTGAAGATAAGCGAGTTGGGGTCCAGCTTAGTGACGAAGCGGTGGA  
 GGACGGCTGTTTCATGAGTTCAAACGCTTCGGTGTGTAAGTGTGAAAATCAGTCATCTGTCCGGTTCT  
 GGCAGCGGGGATGAGCGGTAGCCTTTGTGAACCTCCGCGCGCCAGAGGACGCGCGGGCGGCCAAGCATG  
 CCAGAGGCCCGCTGGTGTCTATGACCGCCTCTGAAGATAGAAGCTGTGTATGTGAGCCGGCGCCGACG  
 CCGCTCCCTTTAGACAAAGATACTTATCTCCATCAGCCAGTGTGGTGGGGCCTCTGTAGGTGGTCCAC  
 CGGCACCCCTGGAGGTGGTGGAGGCCAGAGTCACTTCCCTGGTGGCGCTGCTTTGGGATACAGAG  
 ACTACCGCTGCAGCAGTTGGCTCTTGGCCGCTGCCCTCCACCTCCGCCACCATTGCCTCGAGACCT  
 GGAGAGAGAAAGAGACTACCCGTTCTATGAGAGAGTGCGCCCTGCATACAGTCTTGGCCAAAGGGTGGGA  
 GCTGGAGCAGGTGCTGCTCTTTCAGAGAAGTGGATGAGATTTACCCGAGGATGATCAGCGAGCTAAC  
 GGACGCTCTTCTGGGCAACCTAGACATCACTGTAACGAGAGAGTATTTAAGAAGGGCGTTGATCGCTT  
 TGGAGTCATCACAGAAGTAGATATCAAGAGGCCTTCTCGCGGCCAGACTAGTACTTACGGCTTCTCAAA  
 TTTGAGAACTTAGATATGTCTCACCGGGCCAAATTAGCAATGTCTGGCAAATTAATAATTCGGAATCCTA  
 TCAAAATTGGTTATGGTAAAGCTACACCCACCACCCGCTCTGGGTGGGAGGCCTGGGACCTTGGTTCC  
 TCTTGCTGCCCTGGCAGGAAATTTGATCGATTTGGCACCATACGCACCATAGACTACCGAAAAGGTGAT  
 AGTTGGGCATATATCCAGTATGAAAGCCTGGATGCAGCGCATGCTGCCTGGACCCATATGCGGGGCTTCC  
 CACTTGGTGGCCAGATCGACGCTTAGAGTAGACTTTGCCGACCCGAACATCGTTACCAGCAGCAGTA  
 TCTGCAGCCTCTGCCCTGACTCATTATGAGCTGGTGCAGATGCTTTTGGACATCGGGCACCAGACCTT  
 TTGAGGGGTGCTCGGGATAGGACACCACCTTACTATACAGAGATCGTGATAGGGACCTTATCCTGACT  
 CTGATTGGGTGCCACCCACCCAGTCCGAGAACGCAGCACTCGGACTGCAGTACTTCTGTGCCTGC  
 TTACGAGCCACTGGATAGCCTAGATCGCAGGCGGGATGGTTGGTCTTGGACCGGGACAGAGGTGATCGA  
 GATCTGCCAGCAGCAGAGACCAGCCTAGGAAGCGAAGGCTGCCTGAGGAGAGTGGAGGACGTCATCTGG  
 ATAGGTCTCTGAGAGTGACCGCCACGAAAACGTCACCTGCGCTCCTTCTCTGACCGCAGTCCAGAATT  
 GAGCAGTAGCCGGGATCGTTACAACAGCGACAATGATCGATCTTCCCGTCTTCTTGGAAAAGGCCCTCT  
 CCAATCAGAGACAGACGAGGTAGTTTGGAGAAGAGCCAGGTGACAAGCGAGACCGTAAAAACTCTGCAT  
 CAGCTGAACGAGATAGGAAGCACCGGACAACGCTCCACTGAGGGAAAAAGCCCTTGAAAAAAGAAGA  
 CCGCTCTGATGGGAGTGCACCTAGCACCAGCACTGCTTCTTCCAAGCTGAAGTCCCGTCCCAGAAACAG  
 GATGGGGGGACAGCCCTGTGGCATCAGCCTCTCCAAAACCTGTGTTGGCCTGGCAGGGCATGCTTCTAC  
 TGAAGAACAGCAACTTCTTCCAACATGCATCTGTTGCAGGGTACCTCCAAGTGGCTAGTAGTCTTCT  
 TGTGGAGGTTCAACTGGAGGCAAAGTGGCCAGCTCAAGTCACTCAGCGTCTCCGTTTGGACCAGCCC  
 AAGTTGGATGAAGTAACTCGACGCATCAAAGTAGCAGGGCCCAATGGTTATGCCATTCTTTTGGCTGTGC  
 CTGGAAGTTCTGACAGCCGCTCCTCTTCTCAGCTGCATCAGACACTGCCACTTCTACTCAGAGGCC  
 ACTTAGGAACCTTGTGTCTATTTAAAGCAAAGCAGGCAGCCGGGTGATCAGCCTCCCTGTGGGGGGC  
 AACAAAGACAAGGAAAACACCGGGTCTTCATGCCTTCCACCTTGTGAGTTCTCCAGCAGTTCTCTGG  
 ATTCCCTGCCAAGGCACTGGCCAAATCTGAAGAAGATTACCTGGTCATGATCATTGTCCGTGGGTTTGG  
 TTTTCAGATAGGAGTTAGGTATGAGAACAAGAAGAGAGAAAACCTTGGCGCTGACCCTGTAA

**ACGCGTACGCGGCCGCTCGAG** – GFP Tag – GTTTAA

**Protein Sequence:** >RG214777 representing NM\_022768  
 Red=Cloning site Green=Tags(s)

MRTAGRDPVPRRSRWRRAVPLCETSAGRRTQLRGDDLRRPATMKGKERSPVKAKRSRGGEDTSRGER  
 SKKLGSGGSSNGSSSGKTDSSGGSSRRSLHLKSSSRGGSREYDTGGGSSSSRLHSYSSPSTKNSSGGGES  
 RSSSRGGGGSRSSSGAASSAPGGGDGAETKTKISELGSQLSDEAVEDGLFHEFKRFGDVSVKISHLSGS  
 GSGDERVAFVNFRRPEDARAACHARGRLVLYDRPLKIEAVYVSRRRSRSPDKDTPPSASVVGASVGGH  
 RHPPGGGGQSRSLSPGGAALGYRDYRLQQLALGRLLPPPPPPPLPRDLERERDYPFVERVRPAYSLEPRVG  
 AGAGAAPFREVDIISPEDDQRANRTLFLGNLDITVTESDLRRAFDRFGVITEVDIKRPSRGQTSTYGFLK  
 FENLDMSHRAKLAMSGKIIIRNPIKIGYGKATPTTRLWVGGGLGPWVLAALAREFDRFGTIRTIDYRKGD  
 SWAYIQYESLDAHAHAATHMRGFPLGGPDRRLRVDFADTEHRYQQYQLPLPLTHYELVDAFGHRAPDP  
 LRGARDRTPPLL YRDRDRDL YPDSDWVPPPPVRRERSTRATAATSVPAYEPLDSLDRRRDGSWLDLDRDRDR  
 DLPSSRDQPRKRRLEESGGRHLDRSPEDRPRKRHCAPSPDRSPELSSSRDRYNSDNDRSSRLLELERS  
 PIRDRRGSLEKSQGDKRDRKNSASAERDRKHRTTAPTEGKSPKKEDRSDGSAPSTSTASSKLSKSPSQKQ  
 DGGTAPVASASPKLCLAWQGMILLKNSNFPNMFHLLQGDQVASSLLVEGSTGGKVAQLKIITQRLRLDQP  
 KLDEVTRRIKIVAGPNGYAILLAVPGSSDRSSSSSAASDTATSTQRPLRNLVSYLKQKQAAGVISLPGVG  
 NKDKENTGVLHAFPPCEFSQQFLDSPAALAKSEEDYLVMIIVRGFGFQIGVRYENKKRENLAITLL

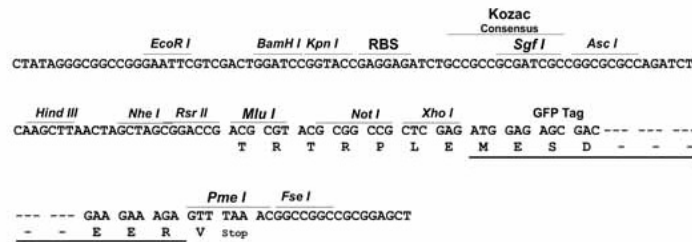
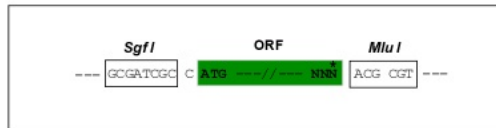
TRTRPLE – GFP Tag – V

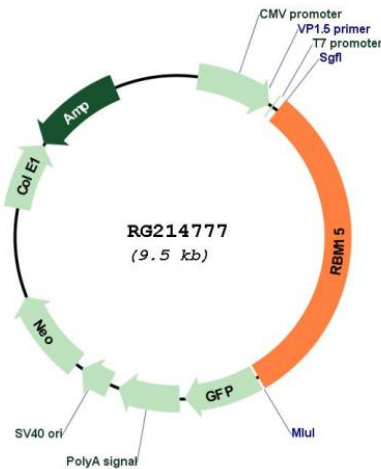
**Restriction Sites:**

SgfI-MluI

**Cloning Scheme:**

Cloning sites used for ORF Shuttling:



**Plasmid Map:**


**ACCN:** NM\_022768

**ORF Size:** 2931 bp

**OTI Disclaimer:** The molecular sequence of this clone aligns with the gene accession number as a point of reference only. However, individual transcript sequences of the same gene can differ through naturally occurring variations (e.g. polymorphisms), each with its own valid existence. This clone is substantially in agreement with the reference, but a complete review of all prevailing variants is recommended prior to use. [More info](#)

**OTI Annotation:** This clone was engineered to express the complete ORF with an expression tag. Expression varies depending on the nature of the gene.

**Components:** The ORF clone is ion-exchange column purified and shipped in a 2D barcoded Matrix tube containing 10ug of transfection-ready, dried plasmid DNA (reconstitute with 100 ul of water).

**Reconstitution Method:**

1. Centrifuge at 5,000xg for 5min.
2. Carefully open the tube and add 100ul of sterile water to dissolve the DNA.
3. Close the tube and incubate for 10 minutes at room temperature.
4. Briefly vortex the tube and then do a quick spin (less than 5000xg) to concentrate the liquid at the bottom.
5. Store the suspended plasmid at -20°C. The DNA is stable for at least one year from date of shipping when stored at -20°C.

**RefSeq:** [NM\\_022768.4](#), [NP\\_073605.4](#)

**RefSeq Size:** 3450 bp

**RefSeq ORF:** 2934 bp

**Locus ID:** 64783

**UniProt ID:** [Q96T37](#)

**Cytogenetics:** 1p13.3

**Protein Families:** Transcription Factors

**Gene Summary:** Members of the SPEN (Split-end) family of proteins, including RBM15, have repressor function in several signaling pathways and may bind to RNA through interaction with spliceosome components (Hiriart et al., 2005 [PubMed 16129689]).[supplied by OMIM, Feb 2009]