

## Product datasheet for **RG214776**

### MYBPC1 (NM\_206821) Human Tagged ORF Clone

#### Product data:

Product Type:	Expression Plasmids
Product Name:	MYBPC1 (NM_206821) Human Tagged ORF Clone
Tag:	TurboGFP
Symbol:	MYBPC1
Synonyms:	LCCS4; MYBPCC; MYBPCS; MYOTREM; ssMyBP-C
Mammalian Cell Selection:	Neomycin
Vector:	pCMV6-AC-GFP (PS100010)
E. coli Selection:	Ampicillin (100 ug/mL)
ORF Nucleotide Sequence:	>RG214776 representing NM_206821 Red=Cloning site Blue=ORF Green=Tags(s)

TTTTGTAATACGACTCACTATAGGGCGGCCGGAATTCGTCGACTGGATCCGGTACCGAGGAGATCTGCC  
GCC**CGATCGCC**

ATGCCAGAACCCTAAGAAAGAGGAAAATGAAGTGCCAGCCCCAGCCCCACCCCGGAAGAACCAAGTA  
AAGAGAAGGAGGCCGGAACCTACACCAGCAAAAGACTGGACCCCTTGTGAAACTCCTCTGGGAGGAACA  
AGCCAAGCAGAAATGCCAACTCCCAGCTGTCCATCTTGTTCATTGAAAACTCAAGGAGGAACAGTGAAA  
GTTGGTGAAGATCACCTTCATAGCCAAAGTCAAGGCTGAAGATCTTCTGAGAAAACCCACTATCAAAAT  
GGTTCAAAGGAAAATGGATGGACCTGGCCAGCAAAGCCGGAAGCACCTTCAGCTGAAGGAAACCTTTGA  
GAGGCACAGTCGGGTGTACACATTTGAGATGCAGATCATCAAGGCCAAAGATAACTTTGCAGGAAATAC  
AGATGCGAGGTCACCTATAAGGATAAGTTTGACAGCTGTTCAATTTGATCTTGAAGTGACCAATCTACTG  
GGACTACTCCAACATTGACATCAGATCTGCTTTCAAGAGAAGTGGAGAAGGTCAAGAGGATGCAGGAGA  
ACTTGACTTTAGTGGTCTCCTGAAACGTAGGGAGGTGAAGCAGCAGGAGGAAGAACCCAGGTGGACGTA  
TGGGAGTTGCTGAAGAACGCGAAACCCAGTGAGTACGAGAAGATCGCCTTCCAGTATGGAATCACCGACC  
TGCGCGCATGCTCAAGCGACTCAAGCGCATGCGCAGAGAGGAGAAGAAGAGCGCAGCTTTTGCAAAAAT  
TCTTGATCCTGCATATCAGTTGACAAAGGAGGAGAGTGAGGTTTGTGGAGCTGGCAGATCCAAGG  
TTGGAGTGAAATGGTATAAAAATGGTCAAGAAATTCGACCCAGTACCAAATACATCTTTGAACACAAAG  
GATGCCAGAGAATCCTGTTTATCAATAACTGTGATGACAGATGATTCAGAGTATTATGTGACAGCCGG  
TGATGAGAAATGTTCCACTGAGCTCTTCGTAAGAGAGCCTCCAATTATGGTGACCAAACAGCTGGAAGAT  
ACAACCTGCTTATTGTGGGAGAGAGTGGAAATAGAATGTGAGGTGTCTGAAGATGATGCCAATGTAAAAAT  
GGTTTAAGAAATGGTGAAGAGATTATCCCTGGTCCAAAATCAAGATACCGAATTAGAGTTGAGGGTAAAAA  
ACACATCTTGATCATAGAGGGAGCAACAAAGGCTGATGCTGCAGAATATTCAGTAATGACAACAGGAGGA  
CAATCATCTGCTAACTTAGTGTGACTTGAAACCTCTGAAGATTTTGACTCCTCTGACTGATCAGACTG  
TAAATCTTGAAAAGAAATCTGCCTGAAGTGTGAAATCTCTGAAAACATACCAGGAAAATGGACTAAAAA  
TGGCTACCTGTTGAGGAGAGTACCGTCTAAAGGTGGTTCACAAGGGAAGGATCCACAAGTTAGTGATA



[View online »](#)

GCCAATGCCCTCACTGAAGATGAAGGTGATTATGTATTTGCACCTGATGCCTACAATGTTACTCTGCCTG  
 CCAAAGTTCATGTTATTGATCCTCCTAAGATCATCCTGGATGGTCTTGATGCTGACAACACAGTGACAGT  
 GATTGCAGGAAACAAGCTTCGTCTTGAGATCCCCATCAGCGGAGAACCACCTCCTAAAGCCATGTGGAGC  
 CGGGGAGATAAGGCTATTATGGAAGGCAGTGGCCGGATAAGAACAAGAACTTACCTGATAGCAGCACTC  
 TGGTCATTGATATAGCTGAAAGAGATGACTCTGGTGTACCACATCAATCTGAAAAACGAAGCTGACGAGA  
 GGCACATGCAAGCATCAAGGTTAAAGTTGTGGACTTCCCTGATCCTCCAGTGGCACCAGCTGTCAGAGAG  
 GTGGGAGATGACTGGTGTATCATGAACTGGGAGCCTCCTGCCTACGACGGAGGCTCCTCAATCCTAGGAT  
 ATTTTATTGAGAGGAAGAAGAAACAAGCTCCAGGTGGATGAGGCTGAATTTTGATCTCTGCAAAGAAAC  
 AACTTTTGAGCCCAAGAAGATGATTGAAGGTGTGGCCTATGAGGTCCGCATCTTTGCAGTCAATGCCATT  
 GGCATCTCCAAGCCAGTATGCCCTCCAGGCTTTTGTCTTTGGCTGTAAACAAGCCCTCTACTCTTC  
 TGACTGTGGACTCTGCTACTGACACGACTGTCACGATGAGGTGGCGCCCCCAGACCACATTGGTGCAGC  
 AGGTTTAGATGGCTATGTGCTAGAGTATTGCTTTGAAGGAAGTGGAGTGGATAGTTGCAAACAAAGAT  
 CTGATTGACAAGACGAAGTTCACCATCACAGGTCTGCCAACAGATGCAAAGATCTTTGTGCGTGTGAAGG  
 CTGTTAATGCAGCTGGTCCAGCGAGCCCAAGTACTATTCTCAGCCATTCTCGTGAAGGAAATCATAGA  
 ACCTCAAAGATTGCGATTCCAAGACACCTGAAGCAAACCTATATCCGCAGAGTTGGAGAAGCTGTCAAT  
 CTGTTTATACCTTCCAGGGAAAACCAAGACCAGAATTAAGTGAAGAAGGATGGTGCAGAAATTGATA  
 AGAATCAAATAAACATTCGCAACTCTGAGACTGATACAATCATATTTATTAGAAAAGCAGAGAGGAGCCA  
 CTCTGGGAAATATGATCTGCAAGTCAAAGTGGACAAATTCGTGGAGACCGCATCAATTGACATCCAGATC  
 ATTGACCGTCCAGGTCCACCCAAATTTGTGAAGATTGAGGATGTCTGGGAGAAAATGTCGCTCTCACAT  
 GGACTCCACCAAAGGATGATGGAATGCTGCTATCACAGGCTATACCATTGAGAAGGCTGACAAGAAGAG  
 CATGGAATGGTTACTGTATTGAGCATTATCATCGAACCAGTCCACCATTACTGAATTGGTTCATAGGG  
 AATGAATATTACTCCGGGTCTTTCTGAAAACATGTGTGGCCTCAGTGGAGTCCACCATTGACTAAAG  
 AGAGTCCAGTGTATCGCCAGGGATGGTAAAATCTACAAAATCCAGTGTATGAAGACTTTGATTTCTCAGA  
 GGCACCCATGTTTACTCAGCCTTTGGTTAACACCTATGCCATAGCTGGTTACAATGCCACCTAACTAAGTGC  
 AGTGTGAGAGGAAATCCTAAGCCTAAAATAACCTGGATGAAAAACAAAGTTGCTATTGTGGATGATCCAA  
 GATACAGGATGTTGAGCAACCAGGGAGTCTGTACCCTGGAATTCGCAAGCCAGCCCTATGATGGAGG  
 CACTTACTGTGCAAAGCAGTCAATGACCTGGGACAGTGGAGATTGAATGCAAAGTGGAGGTGAAAGTC  
 ATTGCACAA

ACGCGTACGCGGCGCTCGAG – GFP Tag – GTTTAA

**Protein Sequence:**

>RG214776 representing NM\_206821  
 Red=Cloning site Green=Tags(s)

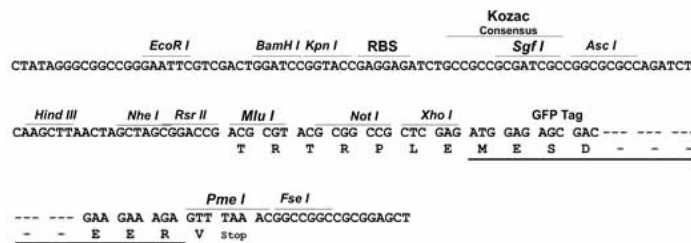
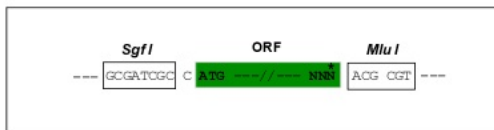
MPEPTKKEENEVPAPAPPPEEPSKEKEAGTTPAKDWTLVETPPGEEQAKQNANSQLSILFIEKPQGGTVK  
 VGEDITFIKVKAEADLLRKPTIKWFKGKWMDLASKAGKHLQLKETFERHSRVYTFEMQIIKAKDNFAGNY  
 RCEVTYKDKFDSCSFLEVHSTGTPNIDIRSAFKRSGEGQEDAGELDFSGLLKRREVKQEEEPQVDV  
 WELLKNAKPSEYEKIAFYQGITDLRGLMLKRLKMRREEKKSAAFAKILDPAYQVDKGGVRVVELADPK  
 LEVKWYKNGQEIRPSTKYIFEHKGQRILFINNCQMTDDSEYYVTAGDEKSTELFVREPPIMVTQLED  
 TTAYCGERVELECEVSEDANVWFKNGEEIIPGPKSRYRIRVEGKHHILIEGATKADAAEYSVMTTGG  
 QSSAKLSVDLPLKILTPLTDQTVNLGKEICLKEISENIPGKWTKNGLPVQESDRLKVVHKGRIHKLVI  
 ANALTEDEGDYVFPDAYNVTLPAKVHVIDPPKIILDGLDADNTVTIAGNKLRLIEPISGEPKAMWS  
 RGDKAIMEGSGRIRTESYPDSSTLVIDIAERDDSGVYHINLKNEAGEAHASIKVKVVDVFPDPPVAPTVE  
 VGDDWCIMNWEPPAYDGGSPILGYFIERKKKQSSRWMLNFDLCKETTFFPKMIEGVAYEVRIFAVNAI  
 GISKPSMPSRPFVPLAVTSPPTLLTVDSVTDTTVMRWRPPDHIGAAGLDGYVLEYCFEGTEDWIVANKD  
 LIDKTKFTITGLPTDAKIFVRVKAVNAAGASEPKYYSQPILVKEIEPPKIRIPRHLKQTYIRRVGEAVN  
 LVIPFQGKPRPELTWKKDGAIEDKNQINIRNSETDIIIFIRKAERSHSGKYDLQVKVDFVETASIDIQI  
 IDRPGPPQIVKIEDVWGENVALTWTPPKDDGNAAITGYTIQKADKSMWFVIEHYHRTSATITELVIG  
 NEYYFRVFSENMCGLEDATMTKESAVIARDGKIYKNPVYEDDFDFSEAPMFTQPLVNTYAIAGYNATLNC  
 SVRGNPKPKITWMKNKVAIVDDPRYRMFSNQGVCLEIRKPSPYDGGTYCCKAVNDLGTVEIECKLEVKV  
 IAQ

TRTRPLE – GFP Tag – V

Restriction Sites: SgfI-MluI

Cloning Scheme:

Cloning sites used for ORF Shuttling:



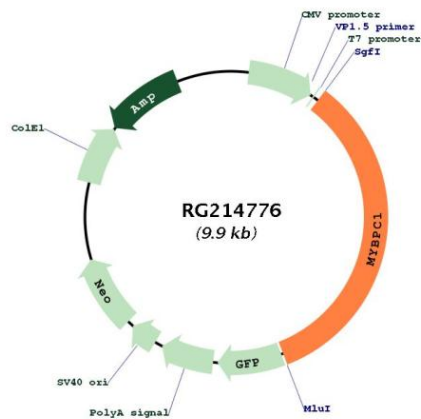
ACCN: NM\_206821

ORF Size: 3369 bp

OTI Disclaimer: The molecular sequence of this clone aligns with the gene accession number as a point of reference only. However, individual transcript sequences of the same gene can differ through naturally occurring variations (e.g. polymorphisms), each with its own valid existence. This clone is substantially in agreement with the reference, but a complete review of all prevailing variants is recommended prior to use. [More info](#)

- OTI Annotation:** This clone was engineered to express the complete ORF with an expression tag. Expression varies depending on the nature of the gene.
- Components:** The ORF clone is ion-exchange column purified and shipped in a 2D barcoded Matrix tube containing 10ug of transfection-ready, dried plasmid DNA (reconstitute with 100 ul of water).
- Reconstitution Method:**
1. Centrifuge at 5,000xg for 5min.
  2. Carefully open the tube and add 100ul of sterile water to dissolve the DNA.
  3. Close the tube and incubate for 10 minutes at room temperature.
  4. Briefly vortex the tube and then do a quick spin (less than 5000xg) to concentrate the liquid at the bottom.
  5. Store the suspended plasmid at -20°C. The DNA is stable for at least one year from date of shipping when stored at -20°C.
- RefSeq:** [NM\\_206821.1](#), [NP\\_996557.1](#)
- RefSeq Size:** 3804 bp
- RefSeq ORF:** 3372 bp
- Locus ID:** 4604
- UniProt ID:** [Q00872](#)
- Cytogenetics:** 12q23.2
- Gene Summary:** This gene encodes a member of the myosin-binding protein C family. Myosin-binding protein C family members are myosin-associated proteins found in the cross-bridge-bearing zone (C region) of A bands in striated muscle. The encoded protein is the slow skeletal muscle isoform of myosin-binding protein C and plays an important role in muscle contraction by recruiting muscle-type creatine kinase to myosin filaments. Mutations in this gene are associated with distal arthrogryposis type I. Alternatively spliced transcript variants encoding multiple isoforms have been observed for this gene. [provided by RefSeq, Dec 2011]

### Product images:



Circular map for RG214776