

Product datasheet for **RG214769**

CDH20 (NM_031891) Human Tagged ORF Clone

Product data:

Product Type:	Expression Plasmids
Product Name:	CDH20 (NM_031891) Human Tagged ORF Clone
Tag:	TurboGFP
Symbol:	CDH20
Synonyms:	Cdh7; CDH7L3
Mammalian Cell Selection:	Neomycin
Vector:	pCMV6-AC-GFP (PS100010)
E. coli Selection:	Ampicillin (100 ug/mL)



[View online »](#)

ORF Nucleotide Sequence:

>RG214769 representing NM_031891
 Red=Cloning site Blue=ORF Green=Tags(s)

TTTTGTAATACGACTCACTATAGGGCGGCCGGAATTCGTCGACTGGATCCGGTACCGAGGAGATCTGCC
 GCC**CGATCGCC**

ATGTGGACTTCTGGTAGAATGAGCAATGCAAAGAAGCTGGCTTGGACTTGGCATGTCTTGTACTTCTGGG
 GGCTGATGGACCTTACGACCACCGTTCTCTCGGACACCCCAACACCACAAGGTGAATTAGAAGCACTCCT
 GTCAGACAAGCCACAGTCACATCAGCGGACCAAGAGGAGCTGGGTTTGGAAACAGTTTTTCTGTTCTGGAA
 GAGTACACTGGGACCGACCCCTTGTATGTGCGCAAGCTTCATTCAGATATGGACAGGGGAGACGGATCCA
 TCAAATACATCCTCTCGGGAGAAGGTGCTGGCATCGTGTACCATCGACGACACCCTGGAGACATCCA
 CGCCATTCAGAGGCTCGACCGAGAGGAAAGAGCCAGTAACTCTAAGGGCTCAAGCCCTAGACAGGCGG
 ACGGGCAGGCCAATGGAGCCGAGTCAGAGTTCATCATCAAATCAAGACATCAATGACAATGAGCCCA
 AGTTCCTGGACGGACCTTATGTGGCCACTGTGCCAGAAATGTCCCCTGTGGGTACCTCCGTCATCCAAGT
 GACAGCCACAGATGCAGATGACCCGACCTACGGCAACAGTGCCAGGGTGGTGTACAGCATTCTTCAGGGC
 CAGCCATATTTTTCTGTGGACTCTAAAACAGGTGAATTAAGGACAGCGCTCATGAACATGGACAGAGAAG
 CCAAAGAATACTACGAAGTGATTATCCAAGCAAGGACATGGGAGGGCAGCTTGGAGGATTAGCTGGGAC
 CACAACAGTCAACATCACCCCTCAGATGTCAATGATAACCCACCCCGCTTCCCCAGAAACATTACCAG
 ATGAGTGTGTTGGAATCAGCTCCAATTAGCTCCACTGTCGGGAGAGTGTGGCAAGGACTTGGATGAAG
 GCATCAATGCAGAGATGAAATATACTATTGTGGATGGAGATGGTGCAGATGCCTTTGACATTAGCACAGA
 TCCCAATTTCAAAGTTGGTATCATAACTGTGAAGAAGCCCTGAGTTTTGAAAGCAAGAAAAGCTACACC
 TAAAGGTGGAGGGAGCCAATCCTCACCTAGAGATGCGTTTTCTGAACTTGGGCCATTTTCAGGACACAA
 CAACAGTGCACATCAGTGTGGAAGACGTGGAGCCCGCTGTGTTTGAACCTGGCTTTTACTTTGTGGA
 GGTGCCTGAGGATGTGGCGATTGGAACAACCATACAGATCATTCTGCCAAGGACCCAGATGTGACCAAC
 AACTCAATCAGATACTCCATTGATAGAAGCAGTGACCCTGGAAGATTTTTCTATGTTGACATTACAACAG
 GTGCCCTAATGACAGCAAGACCCCTAGACCGGGAAGAATTTTCTTGGCATAATATCACTGTCCTTGTCTAT
 GGAAATGAACAATCCCTCCCAGGTTGGAAGTGTCTCTGTGACAATCAAAGTCTTAGATGTGAATGACAAT
 GCTCCAGAGTTCCCAGATTCTATGAAGCTTTGTCTGTGAGAACGCCAAGGCAGGACAGCTGATCCAGA
 CAGTGAGTGGGTGGACCAAGATGACCCACGCAATGGTCAAGATTTCTACTACAGCTTGGCTCCTGAGGC
 TGCTAACAAACCCCACTTTACCATAAGGGACAACCAAGATAACACAGCACGGATTCTAACAGGAGGTCT
 GGTTCGCGCAGCAGGAGCAGAGTGTCTTTCACCTGCCTATCCTGATAGCAGATAGCGGGCAGCCCGTGC
 TGAGCAGCACAGGCACACTGACCATCCAAGTGTGACGCTGTGATGACGACGGCCACGTCATGTCCTGCAG
 CCCAGAGGCCATACATGCTCCCAGTCAGTTTGAGCCGGGGCGCCCTCATTGCCATCCTCGCCTGCATCTTT
 GTCCTCTTAGTGCTGGTGTGCTCATTTTGTCCATGAGGCGGCACCGGAAACAACCATACATCATCGACG
 ACGAGGAAAACATCCACGAGAACATCGTCCGCTACGACGACGAGGGCGGCGGAGGAGGACACCGAGGC
 CTTTCGACATCGCGGCCATGTGGAACCCCGGAGGCGCAGGCGGGGGCCGCCCAAGACGCGGCAGGAC
 ATGCTGCCCGAGATCGAGAGCCTCTCCCGCTACGTGCCTCAGACGTGCGCAGTGAACAGCACTGTCCACA
 GCTACGTGCTGGCCAAGCTCTACGAGGCCGACATGGACCTGTGGCACCAGCCCTTCGACTCCCTCCAGAC
 GTATATGTTTCGAGGGGGACGGCTCTGTGGCGGGTCTGAGCTCCCTGCAGTCGGCCACGTCGGACTCG
 GAACAGAGCTTCGACTTCTGACGACTGGGGGCCCGCTCCGGAAGCTGGCCGAGCTCTACGGGGCGT
 CGGAGGGACCCGCGCGCTGTGG

ACGCGTACGCGGCCGCTCGAG - GFP Tag - GTTTAA

Protein Sequence: >RG214769 representing NM_031891
Red=Cloning site Green=Tags(s)

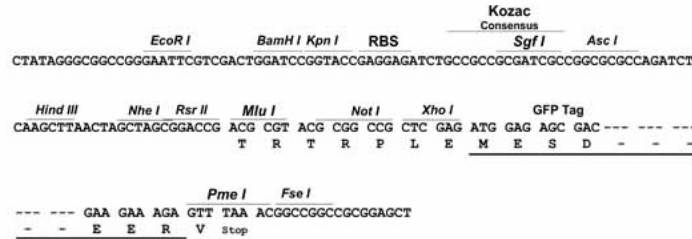
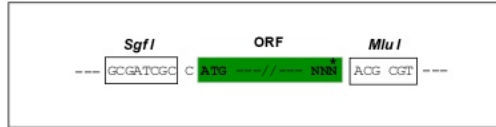
```
MWTSGRMSNAKNWLGGLMSLYFWGLMDLTTTTLSDTPTPQGELEALLSDKPQSHQRTKRSWVWNQFFVLE  
EYTGTDPLYVVGKLSHSDMRGDGSIKYILSGEGAGIVFTIDDTTGDHAIQRLDREERAQYTLRAQALDRR  
TGRPMEPESEFIIKIQDINDNEPKFLDGPYVATVPEMSPVGTSVIQVTATDADDPTYGNSARVVYSILQG  
QPYFSVDSKTGVIRTALMNMMDREAKEYEYEVIIQAKDMGGQLGGLAGTTTNNITLSDVNDNPPRFQPKHYQ  
MSVLESAPISSTVGRVFAKDLDEGINAEMKYTIVDGDGADAFDISTDPNFQVGIITVKKPLSFESKKS  
LKVVEGANPHLEMRFNLGPFQDTTTHISVEDVDEPPVFEPGFYFVEVPEDVAIGTTIQUIISAKDPDVTN  
NSIRYSIDRSSDPGRFFYVDITTGALMTARPLDREEFSWHNITVLAMEMNNPSQVGSVPVTIKVLDVNDN  
APEFPRFYEAFCENAKAGQLIQTSAVDQDDPRNGQHFYYSLAPEAANNPNFTIRDNDNTARILTRRS  
GFRQQEQSVFHLPIIADSGQPVLSSTGTLTIQVCSCDDDDGHVMSCSPEAYMLPVSLSRGALIAILACIF  
VLLVLLVLLILSMRRHRKQPYIIDDEENIHENIVRYDDEGGGEEDTEAFDIAAMWNPREAQAGAAPKTRQD  
MLPEIESLSRYVPQTCVNSTVHSYVLAKLYEADMDLWAPPFDSLQTYMFEQDGSVAGSLSSLQSATSDS  
EQSFDFLTDWGRFRKLAELYGASEGPAPLW
```

TRTRPLE - GFP Tag - V

Restriction Sites: Sgfl-MluI

Cloning Scheme:

Cloning sites used for ORF Shutting:


ACCN: NM_031891

ORF Size: 2403 bp

OTI Disclaimer: The molecular sequence of this clone aligns with the gene accession number as a point of reference only. However, individual transcript sequences of the same gene can differ through naturally occurring variations (e.g. polymorphisms), each with its own valid existence. This clone is substantially in agreement with the reference, but a complete review of all prevailing variants is recommended prior to use. [More info](#)
OTI Annotation: This clone was engineered to express the complete ORF with an expression tag. Expression varies depending on the nature of the gene.

Components: The ORF clone is ion-exchange column purified and shipped in a 2D barcoded Matrix tube containing 10ug of transfection-ready, dried plasmid DNA (reconstitute with 100 ul of water).

Reconstitution Method:

1. Centrifuge at 5,000xg for 5min.
2. Carefully open the tube and add 100ul of sterile water to dissolve the DNA.
3. Close the tube and incubate for 10 minutes at room temperature.
4. Briefly vortex the tube and then do a quick spin (less than 5000xg) to concentrate the liquid at the bottom.
5. Store the suspended plasmid at -20°C. The DNA is stable for at least one year from date of shipping when stored at -20°C.

RefSeq: [NM_031891.4](#)

RefSeq Size: 2855 bp

RefSeq ORF: 2406 bp

Locus ID: 28316

UniProt ID: [Q9HBT6](#)

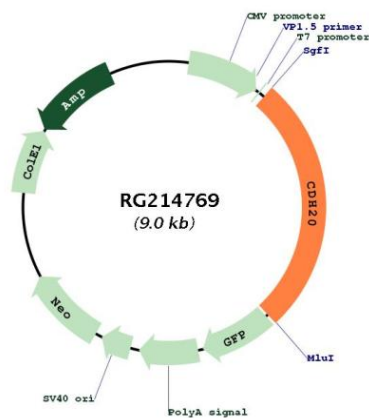
Cytogenetics: 18q21.33

Domains: Cadherin_C_term, CA

Protein Families: Druggable Genome

Gene Summary: This gene is a type II classical cadherin from the cadherin superfamily and one of three cadherin 7-like genes located in a cluster on chromosome 18. The encoded membrane protein is a calcium dependent cell-cell adhesion glycoprotein comprised of five extracellular cadherin repeats, a transmembrane region and a highly conserved cytoplasmic tail. Type II (atypical) cadherins are defined based on their lack of a HAV cell adhesion recognition sequence specific to type I cadherins. Since disturbance of intracellular adhesion is a prerequisite for invasion and metastasis of tumor cells, cadherins are considered prime candidates for tumor suppressor genes. [provided by RefSeq, Jul 2008]

Product images:



Circular map for RG214769