

Product datasheet for **RG214752**

Menin (MEN1) (NM_130800) Human Tagged ORF Clone

Product data:

Product Type:	Expression Plasmids
Product Name:	Menin (MEN1) (NM_130800) Human Tagged ORF Clone
Tag:	TurboGFP
Symbol:	MEN1
Synonyms:	MEAI; SCG2
Mammalian Cell Selection:	Neomycin
Vector:	pCMV6-AC-GFP (PS100010)
E. coli Selection:	Ampicillin (100 ug/mL)



[View online »](#)

ORF Nucleotide Sequence:

>RG214752 representing NM_130800
 Red=Cloning site Blue=ORF Green=Tags(s)

TTTTGTAATACGACTCACTATAGGGCGGCCGGAATTCGTCGACTGGATCCGGTACCGAGGAGATCTGCC
 GCC**GCGATCGCC**

ATGGGGCTGAAGCCGCCAGAAGACGCTGTTCCCGCTGCGCTCCATCGACGACGTGGTGGCCCTGTTT
 CTGCCGAGCTGGCCGAGAGGAGCCGACTGGTGTCTTCTTGGTGTGGCTTCGTGGAGCATT
 TCTGGCTGTCAACCGCGTCATCCCTACCAACGTTCCCGAGCTCACCTTCCAGCCAGCCCGCCCCGAC
 CCGCTGGCGGCCTCACCTACTTCCCGTGGCCGACCTGTCTATCATCGCCGCCCTCTATGCCCGTTCA
 CCGCCAGATCCGAGGCGCGTGCACCTGTCCCTCTATCCTCGAGAAGGGGTGTCTCCAGCCGTGAGCT
 GGTGAAGAAGGTCTCGATGTATATGGAACAGCCTCAGCCGCTCTACTTCAAGGATCGGGCCACATC
 CAGTCCCTCTCAGCTTATCACAGTTGGAGCCAGTAGGCACCAAATTGGACAGCTCCGGTGTGGCT
 TTGCTGTGGTGGGGCTGCCAGGCCCTGGTCTCCGGGATGTCCACCTCGCCCTGTCTGAGGATCATGC
 CTGGGTAGTGTGGGCCAATGGGGAGCAGACAGCTGAGGTACCTGGCACGGCAAGGGCAACGAGGAC
 CGAAGGGCCAGACAGTCAATGCCGGTGTGGTGTAGCGGAGCTGGCTGTACCTGAAAGGATCATACATGC
 GCTGTGACCGCAAGATGGAGGTGGCGTTCATGGTGTGTGCCATCAACCCTTCCATTGACCTGCACACCGA
 CTCGCTGGAGCTTCTGCAGCTGCAGCAGAAGCTGCTCTGGCTGCTCTATGACCTGGGACATCTGAAAGG
 TACCCCATGGCCTTAGGGAACCTGGCAGATCTAGAGGAGCTGGAGCCACCCCTGGCCGGCCAGACCCAC
 TCACCCCTACCAACAAGGCATTGCCTCAGCCAAGACCTACTATCGGGATGAACACATCTACCCCTACAT
 GTACCTGGCTGGTACCCTGTCCGAACCGCAATGTGCGGGAAGCCCTGCAGGCCGCGGACACGGCC
 ACTGTCTCCAGGACTACAACCTACTGCCGGAAGACGAGGAGATCTACAAGGAGTCTTTGAAGTAGCCA
 ATGATGTATCCCAACCTGCTGAAGGAGGCAGCCAGCTTGTGGAGGCGGGCAGGAGCCGCGGGGA
 GCAAAGCCAGGGCACCCAGAGCCAAGGTTCCGCCCTCCAGGACCCCTGAGTGCTTCGCCACCTGCTGCGA
 TTCTACGACGGCATCTGCAAATGGGAGGAGGCGAGTCCCACGCCCTGTGCTGCACGTGGGCTGGGCCACCT
 TTCTTGTGACGTCCCTAGGCCGTTTTGAGGGACAGGTGCGGCAGAAGGTGCGCATAGTGAGCCGAGAGGC
 CGAGGCGGCCGAGGCCGAGGAGCCGTGGGGCAGGAAGCCCGGGAAGGCCGGCGGGGCCACGGCGG
 GAGTCCAAGCCAGAGGAGCCCCCGCCCAAGAAGCCAGCACTGGACAAGGGCTGGGCACCGCCAGG
 GTGCAAGTGTGAGGACCCCGGAAGCCTCCTGGGACTGTGCTGGCACAGCCCGAGGCCCTGAAGGTGG
 CAGCACGGCTCAGGTGCCAGCACCCGACGATCACCACCGCCGGAGGTCAGTGTCTCACTTCCAGAGT
 GAGAAGATGAAGGCATGAAGGAGCTGCTGGTGGCCACCAAGATCAACTCGAGCGCCATCAAGCTGCAAC
 TCACGGCACAGTCGCAAGTGCAGATGAAGAAGCAGAAAGTGTCCACCCTAGTGACTACACTCTGTCTTT
 CCTCAAGCGGCAGCGCAAAGGCCTC

ACGCGTACGCGGCCGCTCGAG - GFP Tag - GTTTAA

Protein Sequence:

>RG214752 representing NM_130800
 Red=Cloning site Green=Tags(s)

MGLKAAQKTLFPLRSIDDVVRLFAAELGREEDLVLLSLVLFVVEHFLAVNRVIPTNPPELTFQSPAPD
 PPGGLTYFPVADLSIIAALYARFTAQIRGAVDLSLYPREGGVSSRELVKKVSVDIWNLSRSYFKDRAHI
 QSLFSFITGWSPVGTCLDSSGVAFVVGACQALGLRDVHLALSEDHAWVVFPGNGEQTAEVTHWKGND
 RRGQTVNAGVAERSWL YLKGSYMRCRDMEVAFMVCAINPSIDLHTDSLELLQLQKLLWLLYDLGHLER
 YPMALGNLADLEELEPTPGRPDPLTYHKGIAAKTYRDEHIYPYMYLAGYHCRNRNVREALQAWADTA
 TVIQDYNCREDEEIIYKEFFEYVANDVIPNLLKEAASLLEAGEERPGEQSQGTQSQGSALQDPECF AHLR
 FYDGICKWEESPTPVLHVGWATFLVQSLGRFEGQVRQKVRIVSREAEAEAEPEPWGEEAREGRRRPPRR
 ESKPEEPPPKPALDKGLGTGQGAVSGPPRPPGTVAGTARGPEGGSTAQVPAPAAASPPPEGPVLTQFS
 EKMKGMKELLVATKINSSAIKLQLTAQSQVQMKKQKVSTPSDYTL SFLKRQRKGL

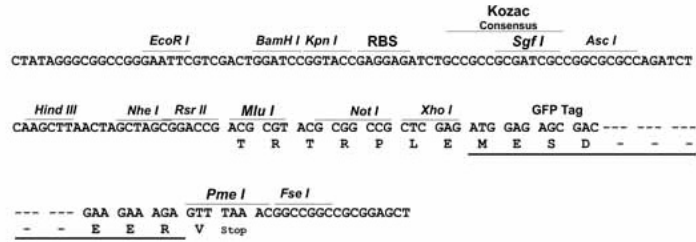
TRTRPLE - GFP Tag - V

Restriction Sites:

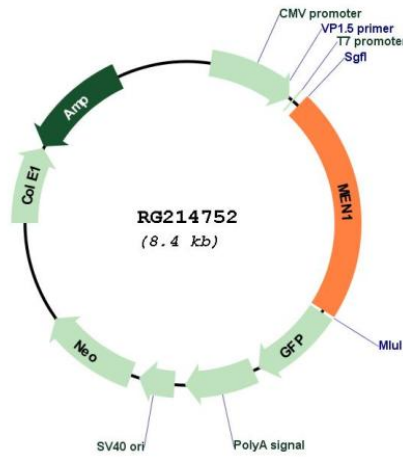
SgfI-MluI

Cloning Scheme:

Cloning sites used for ORF Shutting:



Plasmid Map:



ACCN: NM_130800
 ORF Size: 1845 bp

OTI Disclaimer:	The molecular sequence of this clone aligns with the gene accession number as a point of reference only. However, individual transcript sequences of the same gene can differ through naturally occurring variations (e.g. polymorphisms), each with its own valid existence. This clone is substantially in agreement with the reference, but a complete review of all prevailing variants is recommended prior to use. More info
OTI Annotation:	This clone was engineered to express the complete ORF with an expression tag. Expression varies depending on the nature of the gene.
Components:	The ORF clone is ion-exchange column purified and shipped in a 2D barcoded Matrix tube containing 10ug of transfection-ready, dried plasmid DNA (reconstitute with 100 ul of water).
Reconstitution Method:	<ol style="list-style-type: none">1. Centrifuge at 5,000xg for 5min.2. Carefully open the tube and add 100ul of sterile water to dissolve the DNA.3. Close the tube and incubate for 10 minutes at room temperature.4. Briefly vortex the tube and then do a quick spin (less than 5000xg) to concentrate the liquid at the bottom.5. Store the suspended plasmid at -20°C. The DNA is stable for at least one year from date of shipping when stored at -20°C.
RefSeq:	NM_130800.2 , NP_570712.1
RefSeq Size:	2748 bp
RefSeq ORF:	1848 bp
Locus ID:	4221
UniProt ID:	O00255
Cytogenetics:	11q13.1
Protein Families:	Druggable Genome, Transcription Factors
Gene Summary:	This gene encodes menin, a tumor suppressor associated with a syndrome known as multiple endocrine neoplasia type 1. Menin is a scaffold protein that functions in histone modification and epigenetic gene regulation. It is thought to regulate several pathways and processes by altering chromatin structure through the modification of histones. [provided by RefSeq, May 2019]