

Product datasheet for **RG214738**

ZNF205 (NM_003456) Human Tagged ORF Clone

Product data:

Product Type:	Expression Plasmids
Product Name:	ZNF205 (NM_003456) Human Tagged ORF Clone
Tag:	TurboGFP
Symbol:	ZNF205
Synonyms:	RhitH; Zfp13; ZNF210
Mammalian Cell Selection:	Neomycin
Vector:	pCMV6-AC-GFP (PS100010)
E. coli Selection:	Ampicillin (100 ug/mL)



[View online »](#)

ORF Nucleotide Sequence:

>RG214738 representing NM_003456
 Red=Cloning site Blue=ORF Green=Tags(s)

TTTTGTAATACGACTCACTATAGGGCGGCCGGGAATTCGTCGACTGGATCCGGTACCGAGGAGATCTGCC
 GCC**CGGATCGCC**

ATGCTGCAGACGGCGGAGGCATCCAGGACACCCAGGACAAGGAGACACCCCGGAGGTTCCAGATCGTG
 GACATCCTCATCAGGAAATGCCTTCTAAGCTGGGGGAGGCGGTACCTTCAGGGGACGCTCAGGAGTCACT
 GCACATTAAGATGGAGCCGAAGAGCCACACTCCGAGGGGCATCGCAGGAGGATGGGGCTCAAGGTGCC
 TGGGGCTGGGCACCCCTAAGTCACGGCTCTAAGGAGAAAGCTCTTCTCCTGCCTGGCGGAGCCCTCCCT
 CCCCCGGATCCCGTGTCTTCCGAGAGGGGAGGACCAGAGACCGGCAGATGGTGCAGCGCTCTCAC
 TGCCTGGTCCCAGATGCCAGTACTTTCGAGGATGTGGCCTTGTACCTCTCCCGGAGGAGTGGGGACGG
 CTGGACCACGCAGCAGAATTCTACAGGATGTCTGCAGAAGAAAAATGGGTGTACTGGGCTTTC
 CCTTCAGCAGGCTTCTGGGCCCTCAAGCGCACGGCAAGGGTGAGGCCTCGGGCTCCAGCCGGCAGGC
 AGGAGATGAGAAGGAGTGGAGAGCGCGTGCACAGGAGCCGTCGAGGTGGGGCAGAGGTTGCAGACTCA
 TCCGTGGCAGCCCTTGGGAATGTGAAGCCCTTCAAGAACAGGGCAGGGAGAGTCCAGTGGGGCGTCCCGC
 AGTGCGCGCAGGAAGCAGCCTGCGGCGGAGCTCAGGGCCGGCCAAAGACTCCGGGCAGCCGGCTGAGCC
 AGATCGCACCCCGGATGCAGCTCCGCCAGACCCAGTCCCACGGAGCCCGAGGATACCGCGTCCCGGAG
 AAGCCCAACGAGGAGGAGAAGGGCGCCCGGAGAGTGGCAGGAGGGCCTGGCCCTGACAGTGAAGTGG
 GCAGGAAGAGCTACCGGTGCGAGCAGTGCAGCAAGGGCTTCACTGGCACTCGCACCTGGTGACGCACCG
 GCGCACGCACAGGGCGAGAAGCCCTACGCCTGCACTGACTGCGGAAGCGCTTCGGCCGACGCTCGCAC
 CTCATCCAGCACCAGATCATCCACACGGGCGAGAAGCCCTACACCTGCCCCGCTGCCGAAGAGCTTCA
 GCCACACTCCACGCTGATTCAGCACACGCGCATCCACACCGGAGAGAAGCCCTACGTTGCGCAGCCGTC
 CGCCAAGCGCTTACCCGCGCTCGGACTTGGTACCCACAGGGCACCCACAGGGCGCCAAGCCGCAC
 AAGTGCCCATCTGCGCCAAGTGCTTACGCAGAGCTCGGCGTGTAGTACCCACAGCGCACCCACACTG
 GGGTCAAGCCCTATCCGTGCCCGAGTGCAGCAAGTGTCTCAGCCAGCGTTCACACTCATCGGCACAA
 CCGCACACACAGGCGAGAAGCCCTACACTGCCTCGACTGCGGCAAGAGCTTCAAGCCACAGCTCGCAC
 CTCACCGCGCACAGCGCACCCACCGTGGCGTGCAGCCCTACGCCTGCCGTTGTGCGGCAAGAGCTTCA
 GCCGGCGCTCAACTGCACCGGCACGAGAAGATCCACACACCGGGCCCAAGGCCCTGGCCATGCTGAT
 GCTGGGGCGGGCGGGGGGCTCTGGCCACACCCCAACCGCTCCACC

ACGCGTACGCGGCCGCTCGAG - GFP Tag - GTTTAA

Protein Sequence:

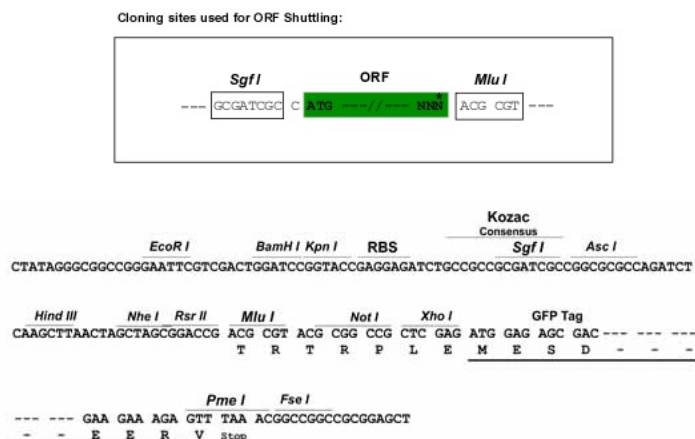
>RG214738 representing NM_003456
 Red=Cloning site Green=Tags(s)

MSADGGGIQDTQDKETPPEVPDRGHPHQEMP SKLGEAVPSGDAQESLHIKMEPEEPHSEGASQEDGAQGA
 WGWAPLSHGSKKALFLPGGALPSRIPVLSREGRTDRQMAAALLTAWSQMPVTFEDVALYL SREEWGR
 LDHTQQNFYRDV LQKKNGLSLGFPSRPFWAPQAHGKGEASGSSRQAGDEKEWRGACTGAVEVQVRVQTS
 SVAALGNVKPFRTRAGR VQWVQPQAQEAACGRSSGPAKDSGQPAEPDRTPDAAPPDPSPTPEYRVPE
 KPNEEEKGAPESGEEGLAPDSEVGRKSYRCEQCGKFSWHSVLVTHRRHTGKPYACTDCGKFRGRSSH
 LIQHQLIHTGKPYTCPACRKSFSHHSTLIQHQLIHTGKPYVCDRCAKFRTRSDLVTHQGTHTGAKPH
 KCPICAKCFTQSSALVTHQRHTGVKPYPCPECGKCF SQRSNLIAHNRHTGKPYHCLDCGKFSHSSH
 LTAHQRTHRGVRYACPLCGKFSRRSNLHRHEKIHHTGPKALAMLMLGAAAAGALATPPPAPT

TRTRPLE - GFP Tag - V

Restriction Sites:

Sgfl-MluI

Cloning Scheme:


ACCN: NM_003456

ORF Size: 1662 bp

OTI Disclaimer: The molecular sequence of this clone aligns with the gene accession number as a point of reference only. However, individual transcript sequences of the same gene can differ through naturally occurring variations (e.g. polymorphisms), each with its own valid existence. This clone is substantially in agreement with the reference, but a complete review of all prevailing variants is recommended prior to use. [More info](#)

OTI Annotation: This clone was engineered to express the complete ORF with an expression tag. Expression varies depending on the nature of the gene.

Components: The ORF clone is ion-exchange column purified and shipped in a 2D barcoded Matrix tube containing 10ug of transfection-ready, dried plasmid DNA (reconstitute with 100 ul of water).

Reconstitution Method:

1. Centrifuge at 5,000xg for 5min.
2. Carefully open the tube and add 100ul of sterile water to dissolve the DNA.
3. Close the tube and incubate for 10 minutes at room temperature.
4. Briefly vortex the tube and then do a quick spin (less than 5000xg) to concentrate the liquid at the bottom.
5. Store the suspended plasmid at -20°C. The DNA is stable for at least one year from date of shipping when stored at -20°C.

RefSeq: [NM_003456.2](#), [NP_003447.2](#)

RefSeq Size: 2077 bp

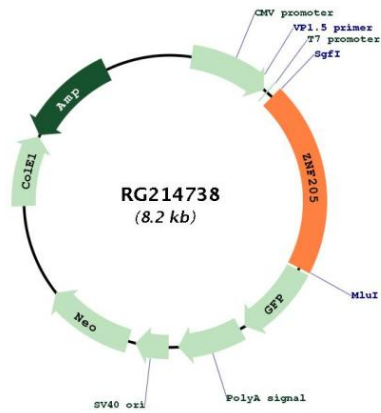
RefSeq ORF: 1665 bp

Locus ID: 7755

UniProt ID: [O95201](#)

Cytogenetics: 16p13.3
 Protein Families: Transcription Factors
 Gene Summary: May be involved in transcriptional regulation.[UniProtKB/Swiss-Prot Function]

Product images:



Circular map for RG214738