

Product datasheet for **RG214697**

TRIM14 (NM_014788) Human Tagged ORF Clone

Product data:

Product Type: Expression Plasmids
Product Name: TRIM14 (NM_014788) Human Tagged ORF Clone
Tag: TurboGFP
Symbol: TRIM14
Mammalian Cell Selection: Neomycin
Vector: pCMV6-AC-GFP (PS100010)
E. coli Selection: Ampicillin (100 ug/mL)
ORF Nucleotide Sequence: >RG214697 representing NM_014788
 Red=Cloning site Blue=ORF Green=Tags(s)

GACGTTGTATACGACTCCTATAGGGCGGCCGGAATTCGTCGACTGGATCCGGTACCGAGGAGATCTGCC
 GCC**GGCGCGCC**

ATGGCGGGCGCGGCGACCGGGAGCCGGACCCCTGGGAGGTCGGAGCTTGTGCGAGGGATGCGGCTGGCGCT
 GCCCGGAGCATGGCGACCGCGTGGCTGAGCTCTTCTGTGCGCCGCTGCCGCCGCTGCGTGTGCGCGCTTTG
 CCCGGTGTGGGCGCGCACCGTGGCCACCCTGTGGCCCTGGCGCTGGAGGCAGCGGTGCACGTGCAGAAA
 CTCAGCCAAGAATGTTTAAAGCAGCTGGCAATCAAGAAGCAGCAGCACATTGACAACATAACCCAGATAG
 AAGATGCCACCGAGAAGCTCAAGGCTAATGCAGAGTCAAGTAAACCTGGCTGAAGGGGAAATTCAGTGA
 ACTCAGATTACTACTTGACGAAGAGGAAGCGCTGGCCAAGAAATTCATTGATAAAAAACGCGAGCTTACC
 CTCCAGGTGTACAGGGAACAAGCTGACTCTTGACAGAGCAACTTGACATCATGAATGATCTCTCCAACA
 GGGTCTGGAGTATCAGCCAGGAGCCGATCCTGTCCAGAGGCTTCAGACGCGCGCACGCCACGCTGGAT
 CCTGACACGATGCACGCGCGCTGCGCCTGTCCGCCGATCGCC

ACGCGTACGCGGCCGCTCGAG - GFP Tag - GTTTAA

Protein Sequence: >RG214697 representing NM_014788
 Red=Cloning site Green=Tags(s)

MAGAATGSRTPGRSELVEGCGWRCPEHGDRVAELFCRRRCRCVCALCPVLGAHRGHPVGLALEAAVHVQK
 LSQECLKQLAIKKQOHIDNITQIEDATEKLKANAESSKTLWKGKFTELRLLLDDEEALAKKFIDKNTQLT
 LQVYREQADSCREQLDIMNDLSNRVWSISQEPDPVQRLQTRARPRWILTRCTRACACPIIA

TRTRPLE - GFP Tag - V

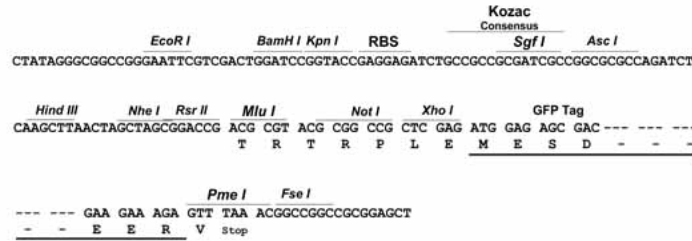
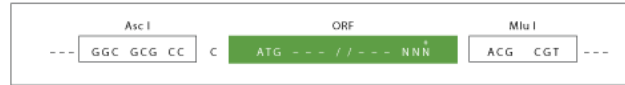
Restriction Sites: AscI-MluI



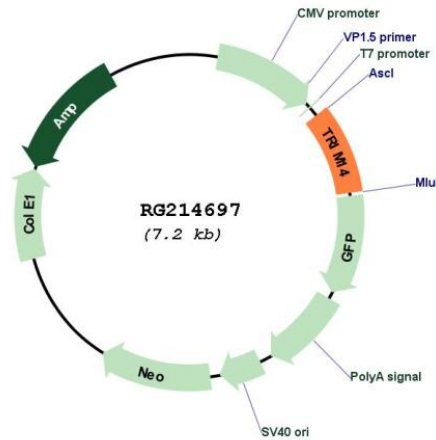
[View online »](#)

Cloning Scheme:

Cloning sites used for ORF Shuttling:



Plasmid Map:



ACCN: NM_014788

ORF Size: 1326 bp

OTI Disclaimer: The molecular sequence of this clone aligns with the gene accession number as a point of reference only. However, individual transcript sequences of the same gene can differ through naturally occurring variations (e.g. polymorphisms), each with its own valid existence. This clone is substantially in agreement with the reference, but a complete review of all prevailing variants is recommended prior to use. [More info](#)

OTI Annotation: This clone was engineered to express the complete ORF with an expression tag. Expression varies depending on the nature of the gene.

Components:	The ORF clone is ion-exchange column purified and shipped in a 2D barcoded Matrix tube containing 10ug of transfection-ready, dried plasmid DNA (reconstitute with 100 ul of water).
Reconstitution Method:	<ol style="list-style-type: none">1. Centrifuge at 5,000xg for 5min.2. Carefully open the tube and add 100ul of sterile water to dissolve the DNA.3. Close the tube and incubate for 10 minutes at room temperature.4. Briefly vortex the tube and then do a quick spin (less than 5000xg) to concentrate the liquid at the bottom.5. Store the suspended plasmid at -20°C. The DNA is stable for at least one year from date of shipping when stored at -20°C.
RefSeq:	<u>NM_014788.2</u> , <u>NP_055603.2</u>
RefSeq Size:	4454 bp
RefSeq ORF:	1329 bp
Locus ID:	9830
UniProt ID:	<u>Q14142</u>
Cytogenetics:	9q22.33
Domains:	zf-B_box, SPRY, PRY
Protein Families:	Druggable Genome
Gene Summary:	The protein encoded by this gene is a member of the tripartite motif (TRIM) family. The TRIM motif includes three zinc-binding domains, a RING, a B-box type 1 and a B-box type 2, and a coiled-coil region. The protein localizes to cytoplasmic bodies and its function has not been determined. Alternative splicing results in multiple transcript variants. [provided by RefSeq, Mar 2010]