

Product datasheet for **RG214687**

PATJ (NM_176877) Human Tagged ORF Clone

Product data:

Product Type:	Expression Plasmids
Product Name:	PATJ (NM_176877) Human Tagged ORF Clone
Tag:	TurboGFP
Symbol:	PATJ
Synonyms:	Cipp; hINADL; InaD-like; INADL
Mammalian Cell Selection:	Neomycin
Vector:	pCMV6-AC-GFP (PS100010)
E. coli Selection:	Ampicillin (100 ug/mL)
ORF Nucleotide Sequence:	>RG214687 representing NM_176877 Red=Cloning site Blue=ORF Green=Tags(s)

TTTTGTAATACGACTCACTATAGGGCGGCCGGAATTCGTCGACTGGATCCGGTACCGAGGAGATCTGCC
GCC**CGATCGCC**

ATGCCTGAAAATCCTGCTACAGATAAACTGCAGGTGCTGCAGGTAATGATCGCCTGAAAATGAAATTGC
AGGAGAAGGGTGACACGTCGCAGAATGAGAAGTTATCTATGTTTTATGAGACTAAAGAGTCCTCTCTT
CAACCAGATACTCACACTTCAGCAGTCCATCAAGCAACTGAAGGGTCACTCAACCATATACCCTCAGAT
TGTTCCAGCAACTTTGATTTTTCTAGGAAAGTTTGTAGTGTTACAGATGGTTCATTACTAATGGAA
ATGTCCACAGGCCCTCTAATAACTCGACTGTATCTGGGTTATTTCCGTGGACCCGAAGTTGGGAAATGA
AGACTTTAACTCAGTCATTCAACAGATGGCTCAGGGCCGCAAAATGAATATATAGATATAGAACGGCCT
TCAACTGGAGGCCCTTGATTGAGTGTGGTGGCCCTCAGAAGTCAAAATCTCGGAAAAGTTGATATCTTCG
TGAAGGATGTCCAGCCAGGGAGTGTAGCAGACAGGGATCAAAGATTAAGGAAAATGATCAAATATTGGC
CATTAAACACACGCCATTGGATCAGAACATTTCCCATCAGCAAGCAATTGCATTATTACAACAAACCACT
GGATCTTTGAGACTGATTGTGGCCAGGGAACAGTCCACACAAAAAGCAGTACTTCTAGCAGCCTAAATG
ATACAACCTCTGCCTGAAACAGTTTGTGGGGCCATGTTGAAGAGGTTGAGCTCATTAAATGATGGCTCTGG
ACTAGGTTTTGGAATAGTTGGAGGAAAAACAAGTGGCGTGGTTGTGAGGACTATAGTTCTGGAGGATTA
GCAGATCGAGATGGAAGACTCCAGACAGGGGACCACATCTGAAGATTGGTGGCACAACGTGCAGGGGAA
TGACAGTGAGCAAGTTGCACAAGTTCTAAGGAACTGTGGAAATTCAGTCAGGATGCTCGTTGCTAGAGA
TCCAGCTGGTGACATTTAGTCACCCCCCTGCCCTGCAGCCTTACCTGTTGCCCTGCCTACTGTAGCC
AGCAAGGGCCCTGGTTCTGACAGTTCTTTTTGAACTTATAATGTTGAGCTTGTGAGAAAAGATGGGC
AGAGTCTTGAATTAGAATTGTTGGCTATGTTGGAACATCTCATACAGGGGAAGCTTCAGGGATTTATGT
GAAAAGTATAATACCTGGCAGTGTGCGTACCACAATGGCCACATTAAGTGAATGACAAAATAGTTGCT
GTCGATGGCGTGAACATTAGGGTTTTGCCAACCATGATGTTGTTGAAGTATTACGAAATGCAGGGCAGG
TGGTACACCTAACCTAGTTGGAAGGAAGACATCTCATCTACTTCTCCACTGAACCACCTTCAGACAG
AGGAACTGTTGTAGAACCCTGAAACCACAGCTCTTTCTAACTGGAGCAGTGGAAACTGAAACTAAT



[View online »](#)

GTGGATGGTGAAGATGAGGAAATTAAGAAAGAATTGATACTTTAAAAATGACAACATACAAGCCTTAG
AAAAATTGGAAAAAGTCCAGACTCTCCAGAAAATGAGCTGAAATCCAGATGGGAAAACCTGTTGGGTCC
TGATTATGAAGTAATGGTTGCTACTTTGGACACACAGATTGCAGATGATGCTGAGTTACAGAAAATATTCA
AAGCTGCTGCCTATTCACACTCTGAGGCTTGGTGTGGAAGTGGATTCTTTGATGGGCACCATTATATTT
CTTCAATTGTTTCTGGTGGTCTGTTGATACATTGGGTCTCTACAGCCAGAAGATGAGCTGCTTGAGGT
CAATGGCATGCAGCTTTATGAAAAATCTCGCCGAGAAGCAGTCTCCTTTCTTAAAGAAGTGCCACCCCT
TTACTTTGGTTTGTCTGCGGAGGTTGTTTGATGATGAAGCTTCTGTAGATGAACCAAGGCGCACTGAAA
CCTCTCTTCTGAGACAGAGGTTGACCACAATATGGATGTCAATACTGAAGAAGATGATGATGGGGAATT
AGCACTGTGGTCCCTGAAGTCAAGATTGTTGAACTAGTAAAAGATTGTAAGGTTTGGGATTACAGCATT
TTGGATTACCAGGACCCTTTAGATCCTACAAGATCAGTGATTGTGATCCGCTCCCTGGTAGCAGATGGTG
TAGCAGAAAGAAGTGGGGACTATTACCTGGAGACCGCTGGTCTCAGTCAATGAATACTGTTTGGACAA
CACCTCACTTGTGAAGCTGTGGAATATTGAAAGCTGTGCCACCAGGCTAGTACACCTTGGCATCTGT
AAGCCTTGGTGAAGATAATGAAGAAGAAAGTTGTTATATTTTACATCAAGCAGTAATGAAGACAAGA
CTGAATTTTCAAGAAACAATTCATGATATAAATTCATCTTAACTCGAAGCACCAAGGGATTTAGAGA
TGAACCATATTTTAAAGAAGAACTTGTGGATGAACCATTTCTAGATCTGGGAAAGCTTTCCATTCCCAA
CAAAAAGAGATAGAGCAAGCAAGGAGGCTGGGAGATGCATGAATTTCTGACTCCTAGATTGCAGGAAA
TGGATGAAGAAAGAGAAATGCTTGTGATGAAGAATATGAGTTATATCAAGATCCCTCACCATCCATGGA
GTTGTATCCCTTGTGCGACATTCAGAGGCCACTCCTGTGCCCTCTGTGAATGAACCTTCACTTTGGTACA
CAGTGGTTGCATGATAATGAACCATCCGAGTCTCAAGAGGCAAGAACCGGGAGGACTGTCTATCCCAAGG
AGGCACAGCCGTATGGCTATTGCCCTGAAAATGTGATGAAAGAAAATTTTGTGATGGAGTCCCTACCATC
TGTACCATCAACTGAAGGAAACAGTCAACAAGGCAGATTGACGACCTGGAAAATCTTAATTCATTAGCA
AAAAGTCTGGATTTAGGCATGATCCGAATGATGTCCAAGGCTCTAGCTTGTGACTTATGACCTTCCCTG
TTGTGGCTCAAAGGAGGGAGCAAGAAGATTTGCCCTTATATCAACACCAAGCGACACGAGTATTTCCAA
GGCCTCAGCATACACAGGAATGTTGCTTAGATATGCCACTGATACATGTGAGTTACCTGAGAGAGAA
GAAGGCGAAGGAGAAGAACTCCAAATTTAGCCACTGGGGTCCACCGAGAATTGTTGAGATTTTTAGAG
AACCCAATGTGTCTCTGGGATCAGTATTGTTGGTGGACAAACTGTTATAAAAACGTCTAAAGAATGGAGA
GGAGCTTAAAGGTATATTCATCAAAAGTTTTGAAGACAGTCCAGCAGGGAAGACGAACGCACCTAAA
ACTGGAGATAAAATACTTGAAGTGTCTGGAGTAGATTTGCAGAATGCCTCACACAGCGAAGCAGTTGAGG
CCATTAAGAATGCAGGAAACCTGTGGTGTTCATTGTTCCAGAGTTTGTCCACTCCACGAGTCATTCC
TAACGTACATAACAAGGCCAACAAAATCACCGGTAAACCAGAACCGACACCCAAGAAAAGAAAAGAAAG
AGGCAAGGAACTGCTCCACCGCAATGAAACTTCTCCTCTTATAAAGCTCTGACTGATGACAGTGATG
AAAATGAAGAAGAAGATGCCTTTACCGACCAAAAATCAGACAAAAGATATGCAGATCTGCCTGGAGAAT
GCACATTATTGAACCTGAAAAAGATAAGAATGGACTTGGACTCAGCCTTGTGGTAAATAAAGACCGATCA
CGCATGAGCATATTTGGTGGGAAATTAACCCGGAAGGACCTGCTGCCGAGATGGACGAATGCGTATTG
GAGATGAACTCTTAGAGATAAACAATCAGATTCTGTATGGAAGAAGTCAACAAAATGCATCTGCCATTAT
TAAGACTGCCCATCAAAGGTCAAGCTGGTTTTTCATCAGAAACGAGGATGCAGTCAATCAGATGGCCGT
ACTCCCTTCCAGTGCCATCAAGTCTCCATCTCTATTGAGGATCAGAGCGGCACCGAACCTATTAGTA
GTGAGGAAGATGGCAGCGTCGAAGTTGGTATTAACAATTGCCTGAAAGTGAAGCTTCAAACCTGGCTGT
CAGCCAGATGAAACAGCAAAAATATCCAACAAAAGTCTCCTTCAGTTACAAGAGATACCATTAGCACCA
GCTTCATCATACCATTAACAGATGCAGACTTACAGGCTATGGTGGTTTCCAGGCTCCTGTGTCAGTGG
ACCCCGCAACGTGTCCATTGTCCCTGGACAGGAAATGATTATAGAAATATCCAAGGGACGTTACAGGCT
TGGTCTCAGCATTGTGGGAGGAAAAGACACACCCTTGAATGCTATAGTTATCCATGAAGTCTATGAAGAA
GGGGCAGCAGCCAGAGATGGAAGACTTTGGGCTGGTGACCAGATATTAGAGGTTAATGGGGTTGACCTGA
GGAATCCAGCCACGAAGAAGCCATCACAGCCCTGAGGCAGACCCCCAGAAGGTGCGGCTGGTGGTGTGTA
TAGAGATGAGGCACACTACCGGATGAGGAGAATTGGAGATTTTCCCTGTGGATCTGCAGAAGAAAGCT
GGCCGGGGCTGGCCTGAGCATCGTTGGGAAACGAAATGGAAGCGGAGTGTATTTCTGACATCGTGA
AAGGCGGAGCCGACAGCTGGATGGGAGATTGATTCAGGGAGATCAGATCTTATCTGTGAATGGGGAGGA
CATGAGAAATGCCTCACAGGAGACAGTGCCACCATCCTCAAGTGTGCACAGGGACTTGTGCAGCTAGAG
ATTGGAAGACTCCGAGCTGGTTCCTGGACCTCCGCAAGGACGACATCACAGAACAGTCAGGGTAGTCAGC
AGAGTGCACACAGCAGCTGTATCCCTCCTTCCGCTCCTGTGATCACTGGCCTGCAAAAACCTGGTTGGCAC
AAAAGAGTTTTCAGATCCTTCCCAGAAAATTCAGGCACAGATATGGAACCAAGGACTGTTGAGATAAAC
AGGGAGCTCAGTATGCCCTTGGAAATCAGTATTGCTGGAGGAAGAGGAAGTCCCTTAGGAGATATCCCCG

TATTTATTGCCATGATTCAGGCTAGCGGAGTGGCCGCACGGACACAGAAGCTTAAAGTTGGAGATCGGAT
 TGTCAGCATTAAACGGGAACCTTTGGATGGGCTGTCTACGCGGATGTGGTTAATCTGCTGAAGAACGCC
 TACGGGCGCATTATCCTGCAGGTTGTAGCAGATACCAATATAAGCGCCATAGCAGCTCAGCTTGAAAACA
 TGTCTACAGGCTACCACCTTGGTTCCGCCACTGCTGAACACCATCCAGAAGACACAGAGGAGCAGCTGCA
 GATGACGGCCGAT

ACGCGTACGCGGCCGCTCGAG – GFP Tag – GTTTAA

Protein Sequence:

>RG214687 representing NM_176877
 Red=Cloning site Green=Tags(s)

MPENPATDKLQVLQVLDRLKMKLQEKGDTSQNEKLSMFYETLKSPLFNQILTLQQSIKQLKGQLNHIPS
 CSANFDFSRKGLLVFTDGSITNGNVHRPSNNSTVSGLFPWTPKLGNEDFNSVIQQMAQGRQIEYIDIERP
 STGGLGFSVVALRSQNLGKVDIFVKDVQPGSVADRDRQRLKENDQILAINHTPLDQNIHQQAIALLLQTT
 GSLRLIVAREPVHTKSSTSSSLNDTTLPETVCWGHVEEVELINDGSGLFGFIVGGKTSVVVVRTIVPGGL
 ADRDGRQLQTGDHILKIGGTNVQGMTSEQAQVLRNCGNSVRMLVARDPAGDISVTPPAPAALPVALPTVA
 SKGPGSDSSLFETYNVELVRKDGQSLGIRIVGVYVTSHTGEASGIYVKSIIIPGSAAYHNGHIQVNDKIVA
 VDGVNIQGFANHDVVEVLRNAGQVYVHLTLVRRKTSSTSPLEPPSDRGTVVEPLKPPALFLTGAVETETN
 VDGEDEEIKERIDTLKNDNIQALEKLEKVPDSENELKSRWENLLGPDYEMVATLDTQIADDAELQKYS
 KLLPIHTLRLGVEVDSFDGHHYISSIVSGGPVDTLGLLQPEDELLEVNGMQLYKGSRRREAVSFLKEVPPP
 FTLVCCRRFLDDEASVDEPRRTEETSLPETEVDHNMVDNTEEDDDGELALWSPEVKIVELVKDCKGLGFSI
 LDYQDPLDPTRSVIVIRSLVADGVAERSGGLPGDRLVSVNEYCLDNTSLAEAVEILKAVPPGLVHLGIC
 KPLVEDNEEESYILHSSNEDKTEFSGTIHDINSSLILEAPKGRDEPYFKEELVDEPFLDLGKSFHSQ
 QKEIEQSKAEWMEFLTPRLQEMDEEREMLVDEEYELYQDPSPSMELYPLSHIQEATPVPSVNELHFGT
 QWLHDNEPSESQEARTGRVYSQEAQPYGYCPENVMKENFVMSLPSVSPSTEGNSQQGRFDDLENLSLA
 KTSLDLGMIIPNDVQGPSLLIDL PVVAQRREQEDLPLYQHQATRVISKASAYTGMLSSRYATDTCELPERE
 EGEGEETPNF SHWGPRIIVEIFREPNVSLGISIVGGQTVIKRLKNGEELKGIKQVLEDSFAGKTNALK
 TGDKILEVSGVDLQNASHEAVEAIKNAGNPVVFIVQSLSSTPRVIPNVHNKANKITGNQNDTQEKKEK
 RQGTAPPPMKLPPPYKALTDSDENEEDAFDQKIRQRYADLPGELHIELEKDKNGLGLSLAGNKDRS
 RMSIFVVGINPEGPAAADGRMRIGDELLEINNQILYGRSHQNASAIKTAAPSKVKLVFIRNEDAVNQMAV
 TPFVPPSSPSSIEDQSGTEPISSEEDGSVEVGKQLPESEFKLAVSQMKQKQYPTKVSFSSQEIPLAP
 ASSYHSTDADFTGYGGFQAPLSVDPATCPVPGQEMIIEISKGRSGLGLSIVGGKDTPLNAIIVHEVYEE
 GAAARDGRLWAGDQILEVNGVDLRNSSHEEAITALRQTPQKVRLLVYRDEAHYRDEENLEIFPVDLQKKA
 GRGLGLSIVGKRNGSGVFI SDIVKGAADLDGRLIQGDQILSVNGEDMRNASQETVATILKCAQGLVQLE
 IGRLRAGSWTSARTTSQNSQGSQSAHSSCHPSFAPVITGLQNLVGTKRVSQKNSGTDMEPRTVEIN
 RELSDALGISIAGGRGSPLDIPVFIAMIQASGVAARTQKLVKVDRIVSINGQPLDGLSHADVNNLLKNA
 YGRIILQVVADTNI SAIAAQLNMSTGYHLGSPTAEHHPEDTEEQMTAD

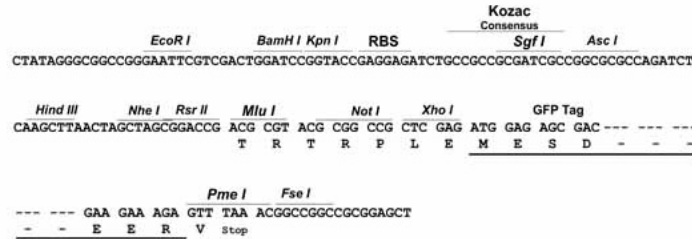
TRTRPLE – GFP Tag – V

Restriction Sites:

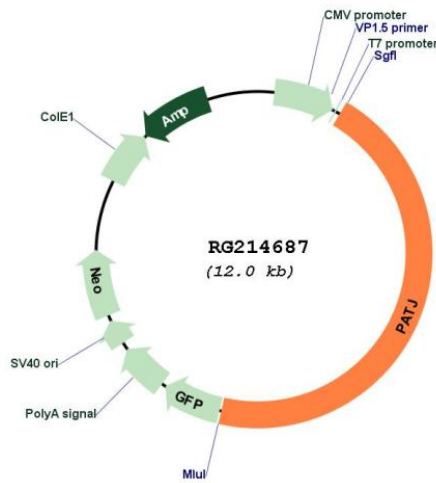
Sgfl-MluI

Cloning Scheme:

Cloning sites used for ORF Shutting:



Plasmid Map:



ACCN:

NM_176877

ORF Size:	5403 bp
OTI Disclaimer:	The molecular sequence of this clone aligns with the gene accession number as a point of reference only. However, individual transcript sequences of the same gene can differ through naturally occurring variations (e.g. polymorphisms), each with its own valid existence. This clone is substantially in agreement with the reference, but a complete review of all prevailing variants is recommended prior to use. More info
OTI Annotation:	This clone was engineered to express the complete ORF with an expression tag. Expression varies depending on the nature of the gene.
Components:	The ORF clone is ion-exchange column purified and shipped in a 2D barcoded Matrix tube containing 10ug of transfection-ready, dried plasmid DNA (reconstitute with 100 ul of water).
Reconstitution Method:	<ol style="list-style-type: none">1. Centrifuge at 5,000xg for 5min.2. Carefully open the tube and add 100ul of sterile water to dissolve the DNA.3. Close the tube and incubate for 10 minutes at room temperature.4. Briefly vortex the tube and then do a quick spin (less than 5000xg) to concentrate the liquid at the bottom.5. Store the suspended plasmid at -20°C. The DNA is stable for at least one year from date of shipping when stored at -20°C.
RefSeq:	NM_176877.2 , NP_795352.2
RefSeq Size:	8505 bp
RefSeq ORF:	5406 bp
Locus ID:	10207
Cytogenetics:	1p31.3
Protein Families:	Druggable Genome
Protein Pathways:	Tight junction
Gene Summary:	This gene encodes a protein with multiple PDZ domains. PDZ domains mediate protein-protein interactions, and proteins with multiple PDZ domains often organize multimeric complexes at the plasma membrane. This protein localizes to tight junctions and to the apical membrane of epithelial cells. A similar protein in Drosophila is a scaffolding protein which tethers several members of a multimeric signaling complex in photoreceptors. [provided by RefSeq, Jul 2008]