

Product datasheet for **RG214680**

RAB11FIP1 (NM_001002814) Human Tagged ORF Clone

Product data:

Product Type:	Expression Plasmids
Product Name:	RAB11FIP1 (NM_001002814) Human Tagged ORF Clone
Tag:	TurboGFP
Symbol:	RAB11FIP1
Synonyms:	NOEL1A; rab11-FIP1; RCP
Mammalian Cell Selection:	Neomycin
Vector:	pCMV6-AC-GFP (PS100010)
E. coli Selection:	Ampicillin (100 ug/mL)
ORF Nucleotide Sequence:	>RG214680 representing NM_001002814 Red=Cloning site Blue=ORF Green=Tags(s)

TTTTGTAATACGACTCACTATAGGGCGGCCGGAATTCGTCGACTGGATCCGGTACCGAGGAGATCTGCC
GCC**CGATCGCC**

ATGTCCCTAATGGTCTCGGCTGGCCGGGGCCTGGGGCCGTGTGGTCCCCAACCCACGTGCAGGTGACGG
TGCTGCAGGCGCGGGCCTGCGGGCCAAGGGCCCCGGGGCAGCAGCGACGCGTACGCGGTGATCCAGGT
GGGCAAGGAGAAGTACGCCACCTCCGTGTCGGAGCGCAGCCTGGGCGGCCCGTGTGGCGGAGGAGGCC
ACCTTCGAGCTGCCATCGCTGCTCCTCCGACCCGCGGCCGCCACCTGCAGCTCACCGTGTGTC
ACCGCGCGCTGCTCGGCCTGACAAGTTCCTGGGCGCGCGGAGGTGGACCTGCGGGATCTGCACCGCA
CCAGGGCCGAGGAAGACGAGTGGTATAAGTTGAAATCCAAACCAGGAAAGAAGGACAAGGAGCGAGGA
GAAATTGAGGTTGACATCCAGTTTATGAGAAAACATGACTGCCAGCATGTTTGACCTTCTATGAAAG
ACAAGTCTCGAATCCATTTGAAAGCTGAAGGACAAGATCAAGGGGAAGAATAAGGACAGTGGGTGAGA
CACCGCCTCCGCCATCATCCCTAGCAGCACCTTCGGTGCAGAGTGTGATGAGTCTGTGGTTAAAGAC
AAGAAAAAGAAATCAAAGATCAAGACCTTACTTTCAAAGTCAAATTTGCAGAAGACGCCTTTTCCCAGT
CCATGTCTGTCTGCGGACTTCAAAGCCAGAAAAAGTGTCTTCGTCCCGGAGACTTTCAGTCCCAGTG
GGATGAAGATGACAATGAGGATGAGTCTCCTCGGCCTCGGATGTATGTCTCACAAGAGAACAGCGAGT
ACGGATCTTAAGCAACTGAACCAGTCACTTTACCCTTCCCAAGGAAGGACTTTCTTTCTTGGTG
GCCTTCGGTCTAAGAATGATGTCTTTCCCGCTAATGTCTGCATCAATGGGAACCATGTTTACCTGGA
GCAGCCAGAAGCCAAGGGTGAGATCAAGGATAGCAGCCGTCCTCCTCCCATCCCCAAGGGCTTCAGA
AAGAAGCATTTGTTCTCTTACAGAGAACCTGGCGGCTGGGTCTTGAAGGAGCCTGCTGAAGGAGGTG
GGCTGTCTTGACAGGCAGCTCTCCGAATCTTCCACCAAGGACTCCTTGAAGTCTATGACCCTGCCGTC
CTACCGACTGCCCACTGGTCACTGGGACCTCAGGGAAAACATGGCCCCGCAAACCTCAGAGGCCACA
AAAGAAGCTAAGGAGAGCAAGAAGCCAGAGAGCAGGAGGTCTCTTTGCTGTCTCTGATGACGGGAAGA
AGGATGTGGCTAAGGGCAGTGAAGGTGAAAACCTCTCACGGTCCAGGGAGGGAGAAGGAAGGCATGCT
GATGGGGTTAAGCCGGGGGAGGACGCATCGGGCCTGTGAAGACCTTGTGAGAAGATCTGAGAAAAGT



[View online »](#)

ACTGCAGCTGTTGTCTCCAGACAGGGCAGCTCCCTGAACCTCTTTGAAGATGTGCAGATCACAGAACCAG
AAGCTGAGCCAGAGTCCAAGTCTGAACCGAGACCTCCAATTTCTCTCCGAGGGCTCCCCAGACCAGAGC
TGTC AAGCCCCGACTGGAAGTGTCTCCAGAGGCGCAACCCACAGCCAGGCTTCTTCCCCTACTGACTCC
CCTTCTCTCTTCTCTCTTCTTCTAGCTCTGGCCAGGCATCTGCCCCCTCTGAATTGGGACATGGTG
CAGACACACAGTCTCTGAGAGTCTTCTGTCTTCTCTCTCTCATCTCCCATAGCAGTCCCATTTC
CACATCCAATCCAATTGAAAGCTGGCCTCTCGTAGACAGGGGCCAGGCCAAGTCTGAAGGACCACCCTTG
CTCCCTAAGGCAGAGTTGCAAACCTGAGAGTTTAAACACCGGTTCCAAATTTCTGGTTCTTCTGCCCTGGG
CACTTTTCAAACAGCCATCCTTTCCAGCAAATAAAGGGACAGAAGATTCTCTGATGGGCAGGACCCGTGA
GACAGGCACAGAGAAGAACCAGCAGCCTTGAGTTGGAGGAGTCTCTCCAGAGCAGCCTGAAACAGGG
CGACAAGAGGAAGAACTCCGAGATTCCCTGCAAAAAACAAGACTACAGCCCATCATCTGGAGAAGCCC
AGGAAGTACCGTTTGCCTTTCACTCAGCAGTGATGGAGCTGTGAGCCCTGTTGGGGAGCTTGACAGAG
AGGAGACAGAGACTTGGAGAGTCAAGGCTGGGTCTTGTGGAGAGCAAAGCCAGGGATGCAGCTGAAGAA
GTGGGCCCCCTCTTCCCATGGGAGCATCAGTCCCTTCCATTGATTCCATGATGCGGAAGCTGGAAGAGA
TGGGTCTGAACCTCCGCAAGGACCAGAAGAAAACCAAGAAGCGTGTGTCATTTTCTGAGCAGCTCTTAC
GGAAGAGGCAGTGGCGGGGGCTGCCTTGTGGTGAAGGACACAGCAGTTGTCCCAGGAGCTGAACCT
GCATGGTCTGTTGCTGGAACCGCTCTGACGGAGAGCCTCCTGAGTCTCCCCACGCAGAGGACTCAGAAA
GGGAATCGGTGACCACACCTGGGCCAGCGACGTGTGGTGCGCCAGCCTCCCCAGCGGATCACCTCCTCT
CCCCTCCAGGAGGAGAGTTTCTCCGAAGTCCCATGAGTGAAGCAAGCTCAGCGAAAGACTCCACTC
TTTAGGATGGAGGGAGAGGATGCCCTTGTGACTCAGTATCAGAGCAAAGCCAGTGACCACGAAGTTTAT
TGTCTGACCCCTTGAGTGACTTTTCAAGTGGTCTCAGATTTTAAATCTCCAATCATGGCCGATCTGAACT
AAGCCTTCTTCCATTCTGAAGTCGCATCGGATGATGAAAGAATAGATCAGGTTGAAGATGACGGAGAT
CAGGTTGAAGATGATGGAGAGACAGCAAAGTCGTAACCTCTGGACATAGGAGCTTGTCTTGGCCTTGG
TAGTCCCCTGCTCTGAGAGGGGAAAGGGGCCAGTGGCGAGGCAGATAGGTTGGTACTGGGGGAGGGCCT
GTGTGATTTTCAAGCTGCAAGCACCCAGGCATCTGTGACAGCTCCTTTCAGAGCAGACCACAGAGTTCCGGA
ATTCACAAACCACATCTTGGCAAGAGCTCAAGCTTGGATAAACAGCTGCCAGGCCCCAGTGGTGGTGGG
AAGAAAAACCGATGGGAAATGGGAGTCCAAGCCCGCTCCTGGCACATCCCTGGACAATCCTGTACCCAG
CCCCTCCCCTTCTGAGATCTTCTCTGTACACACTCTTCCCCAGCTCTGCACATTCTGACACTCACCAC
ACCAGCACAGCAGAATCTCAAAAAAAGCCACAGCAGAGGGCTCCGCTGGTAGAGTTGAAAATTTGGCA
AGAGGAAGCCACTCCTCCAGGCCTGGGTCTCACCTCGGAGACACATCCAGTCTCAGCTCAGCCAGGCGC
TGAACTGGGTGAGCAAGCACAGACTTATCCTGTGAAGCCAATGAATGCCACGGCCACCAAGGTTGCT
AACTGCAGCTTGGGAACTGCCACCATCATCAGTGAGAATGAACAATGAGGTCATGATGAAGAAATACA
GCCCTCGGACCTGCATTTGCATATGCGCAGCTGACCCACGATGAGCTGATTCAGCTGGTCTCAACCA
GAAGGAAACGATAAGCAAGAAGGAGTTCAGGTCGCGAGCTGGAAGACTACATTGACAACCTGCTTGTG
AGGGTCATGGAAGAAACCCCAATATCCTCCGCATCCCAGCTCAGGTTGGCAAAAAAGCAGGAAAGATG

AGCGGACCGACGCGTACGCGGCCGCTCGAG - GFP Tag - GTTTAA

Protein Sequence: >RG214680 representing NM_001002814
 Red=Cloning site Green=Tags(s)

```
MSLMVSAGRGLGAVWSPTHVQVTVLQARGLRAKGGTSDAYAVIQVGKEYATSVSERSLGAPVWREEA
TFELPSLLSSGPAATAATLQLTVLHRALLGLDKFLGRAEVDLRLHRDQGRRTQWYKLSKPKGKDKERG
EIEVDIQFMRNNMTASMFDL SMKDKSRNPFGLKDKIKGKNKDSGSDTASAIIPSTTPSVSDDES VVKD
KKKSKIKTLLSKSNLQKTPLSQSMSVLPTSKPEKVLLRPGDFQSQWDEDDNEDESSASDVM SHKRTAS
TDLKQLNQVNF TLPKKEGLSFLGGLRSKNDVLSRSNVCINGNHVYLEQPEAKGEIKDSSPSSSPKGF
KKHLFSSTENLAAGSWKEPAEGGLSSDRQLSESSTKDSLKSMTLPSYRPAPLVSGDLRENMAPANSEAT
KEAKESKPKESRRSSLLSLMTGKKDVAKGSEGENPLTVPGREKEGMLMGV KPGEDASGPAEDLVRSEKD
TAAVVSQRGSSSLNLFEDVQITEPEAEPEKSEPRPPISSPRAPQTRAVKPRLEVSPEAQPTARLPSPTDS
PSSLPPLSSSGQASAPSELGHGADTQSSESPSVFSSLSPIAAPISTSTPIESWPLVDRGQAKSEG PPL
LPKAE LQTESLTPVPNSGSSALGSLFKQPSFPANKGTEDSLMGRTRTGTGKNTSSELEESLPEQPETG
RQEEELPRFPCKQDYSPSSGEAQEVFPALSLSSDGAVSPVGELAAGGDRDLESQAGSLVESKARDAEE
VAPPLPMGASVPSIDSMRKL EEMGLNLRKDQKTKKRVSFSEQLFTEEAVAGAALLVEGHSSCPQELNP
AWSVAGNASDGEPPESPHAEDSERESVTTPGPATCGAPASPADHLLLPSQEESESEVPMSEASSAKDTPL
FRMEGEDALVTQYQSKASDHEGLLSDPLSDFQLVSDFKSPIMADLNL SLP SIPEVASDDERIDQVEDDGD
QVEDDGETAKSSTLDIGALSLGLVVPCEPERGKGPSGEADRLVLGEGLCDFRLQAPQASVTAPSEQTTEFG
IHKPHLGKSSSLDKQLPGPSGEEEEKPMGNPSPPPGTSLDNPVPSPPSEIFPVTHSFSSAHS DTHH
TSTAESQKKATAEGSAGRVENFGKRKPLLQAWVSPSETHPVSAQPGAGTGS AKHRLHPVKPMNATATKVA
NCSLGTATII SENLNNEVMMKKYSPSDPAFAYAQLTHDELIQLVLKQKETISKKEFQVRELEDYIDNLLV
RVMEETPNILRIPTQVGGKAGKM
```

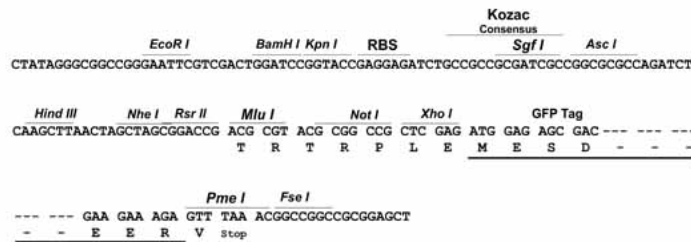
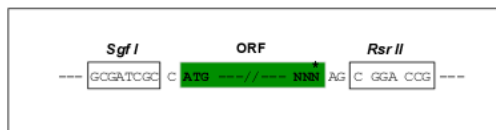
SGPTRRRLE - GFP Tag - V

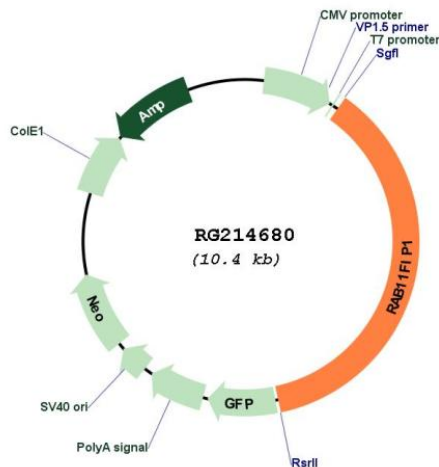
Restriction Sites:

SgfI-RsrII

Cloning Scheme:

Cloning sites used for ORF Shuttling:



Plasmid Map:


ACCN: NM_001002814

ORF Size: 3849 bp

OTI Disclaimer: The molecular sequence of this clone aligns with the gene accession number as a point of reference only. However, individual transcript sequences of the same gene can differ through naturally occurring variations (e.g. polymorphisms), each with its own valid existence. This clone is substantially in agreement with the reference, but a complete review of all prevailing variants is recommended prior to use. [More info](#)

OTI Annotation: This clone was engineered to express the complete ORF with an expression tag. Expression varies depending on the nature of the gene.

Components: The ORF clone is ion-exchange column purified and shipped in a 2D barcoded Matrix tube containing 10ug of transfection-ready, dried plasmid DNA (reconstitute with 100 ul of water).

Reconstitution Method:

1. Centrifuge at 5,000xg for 5min.
2. Carefully open the tube and add 100ul of sterile water to dissolve the DNA.
3. Close the tube and incubate for 10 minutes at room temperature.
4. Briefly vortex the tube and then do a quick spin (less than 5000xg) to concentrate the liquid at the bottom.
5. Store the suspended plasmid at -20°C. The DNA is stable for at least one year from date of shipping when stored at -20°C.

RefSeq: [NM_001002814.1](#), [NP_001002814.1](#)

RefSeq Size: 7856 bp

RefSeq ORF: 3852 bp

Locus ID: 80223

UniProt ID: [Q6WKZ4](#)

Cytogenetics: 8p11.23

Protein Families: Druggable Genome

Protein Pathways: Endocytosis

Gene Summary: This gene encodes one of the Rab11-family interacting proteins (Rab11-FIPs), which play a role in the Rab-11 mediated recycling of vesicles. The encoded protein may be involved in endocytic sorting, trafficking of proteins including integrin subunits and epidermal growth factor receptor (EGFR), and transport between the recycling endosome and the trans-Golgi network. Alternative splicing results in multiple transcript variants. A pseudogene is described on the X chromosome. [provided by RefSeq, Dec 2013]