

Product datasheet for **RG214671**

MLL5 (KMT2E) (NM_182931) Human Tagged ORF Clone

Product data:

Product Type:	Expression Plasmids
Product Name:	MLL5 (KMT2E) (NM_182931) Human Tagged ORF Clone
Tag:	TurboGFP
Symbol:	KMT2E
Synonyms:	HDCMC04P; MLL5; NKp44L; ODLURO
Mammalian Cell Selection:	Neomycin
Vector:	pCMV6-AC-GFP (PS100010)
E. coli Selection:	Ampicillin (100 ug/mL)
ORF Nucleotide Sequence:	>RG214671 representing NM_182931 Red=Cloning site Blue=ORF Green=Tags(s)

TTTTGTAATACGACTCACTATAGGGCGGCCGGAATTCGTCGACTGGATCCGGTACCGAGGAGATCTGCC
GCC**CGATCGCC**

ATGAGCATAGTGATCCCATTGGGGTTGATACAGCAGAGACGTCATACTTGAAATGGCTGCAGGTTTACAG
AACCAGAATCCGTAGAAGCTAGCCCTGTGGTAGTTGAGAAATCCAACAGTTATCCCCACCAGTTATATAC
CAGCAGCTCACATCATTACACAGTTACATTGGTTTGCCTATGCGGACCATAATTATGGTGCTCGTCT
CCTCCGACACCTCCGGCTTCCCCTCCTCCATCAGTCCTTATTAGCAAAAATGAAGTAGGCATATTTACCA
CTCCTAATTTTGATGAACTTCCAGTGCTACTACAATCAGCACATCTGAGGATGGAAGTTATGGTACTGA
TGTAACCAGGTGCATATGTGGTTTTACACATGATGATGGATACATGATCTGTTGTGACAAATGCAGCGTT
TGGCAACATATTGACTGCATGGGGATTGATAGGCAGCATATTCCTGATACATATCTATGTGAACGTTGTC
AGCCTAGGAATTTGGATAAAGAGAGGGCAGTGCTACTACAACGCCGAAAAGGGAAAAATATGTCAGATGG
TGATACCAGTGCAACTGAGAGTGGTGATGAGGTTCTGTGGAAATATATACTGCATTTTCAGCATACTCCA
ACATCAATTACTTTAACTGCTTCAAGAGTTTCAAAGTTAATGATAAAGAAGGAAAAAAGCGGGGAGA
AAGAACAACACATTTCAAATGTAAAAAGGCATTTTCGTGAAGGATCTAGGAAGTCATCAAGAGTTAAGGG
TTCAGTCCAGAGATTGATCCTTCATCTGATGGTTCAAATTTGGATGGGAGACAAAGATCAAAGCATGG
ATGGATCGATATGAAGAAGCAAATAACAACAGTACAGTGAGGGTTCAGAGGGAGGCACAAGAATAG
CTCTGAGATTAGCAATGGAAATGACAAAAAGAGATGAATAAATCCGATTTGAATACCAACAATTTGCT
CTTCAAACCTCCTGTAGAGAGCCATATACAAAAGAATAAGAAAATTTCTAAATCTGCAAAAAGATTTGCCT
CCTGATGCACTTATCATTGAATACAGAGGGAAAGTTTATGCTGAGAGAACAGTTTGAAGCAAATGGGTATT
TCTTTAAAGACCATACCCTTTTGTGTTATTCTACTCTAAATTTTCATGGGCTAGAAATGTGTGTTGATGC
AAGGACTTTTGGGAATGAGGCTCGATTTCATCAGGCGGTCTTGTACACCCAATGCAGAGGTGAGGCATGAA
ATTCAAGATGGAACCATACATCTTTATATTTATTCTATACACAGTATTCCAAAGGAACTGAAATTA
TTGCCCTTGATTTGACTATGAAATTGTAAGTACAAGGTGGACTGTGCATGCCTCAAAGAAAACCCAGA
GTGCCCTGTTCTAAAACGTAGTTCTGAATCCATGGAAAATATCAATAGTGTTTATGAGACCAGACGGAAA



[View online »](#)

AAAGGAAAAAAGACAAAAGATATTTCAAAGAAAAAGATACACAAAATCAGAATATTACTTTGGATTGTG
 AAGGAACGACCAACAAAATGAAGAGCCCAGAACTAAACAAAGAAAAGCTTTCTCCACTGAGACTATCAGT
 ATCAAATATCAGGAACCAAGATTTTATTGATGATATAGAAGAAAAAACTCCTATTAGTAATGAAGTAGAA
 ATGGAATCAGAGGAGCAGATTGCAGAAAGGAAAAGGAAGATGACAAGAGAAGAAAAGAAAATGGAAGCAA
 TTTTGCAAGCTTTTGCCAGACTTGAAGAGAGAGAAAAGAAGAGAACAAGCTTTGGAAAGGATCAGCAC
 AGCCAAAAGTGAAGTAAAAGTGAATGTAAGATACACAGATTGTCAGTGATGCTGAAGTTATTCAGGAA
 CAAGCAAAAAGAAGAAAATGCTAGCAAGCCAAACCCTGCCAAAGTAAATAGAAGTAAACAGAGAAAAGTT
 TTTCTCGGAGTAGGACTCACATTGGACAGCAGCGTCGGAGACACAGAAGTGTGAGTGTTCAGATAT
 CCAGCCATCTTCTCCTGATATAGAAGTTACTTCAACAACAAAATGATATTGAAAATACTGTACTTACAATA
 GAACCAGAAAAGTAAAAGTGAAGTGAAGTCCAGCACTTAATAAATGTC
 CTACCAAGTACCCAAAAACAAAGAAGCACTTGGTTAATGAATGGTTAAGTGAGAAGAAATGAGAAGACAGG
 AAAACCTTCAGATGGCCTTTAGAAAGGCTCTACGCATAACTACAGATCCTGAAGTGTAGCTACACAA
 CTCAATTTCTTACCAGGTCTCACTTACAGCCCCATGTATACTCCACTCCTAAGCATTATATTAGATTTA
 CTTACCATTCTTTAGAAAAAGGAGAAGAAAAGAACCTACTGAAAACATTTCTGGTTTACGCAAGAA
 GCGATGGTTGAAACAAGCTCTGGAAGAAGAAAATTCAGCAATTTTACATAGATTTAATTCACCCTGTCAA
 GAAAGATCCAGAAGTCTGCAGTCAATGGTGAAAATAAAAAGTCCACTACTATTAATGACAGCTGTCC
 TTCCAGATTTAACTACACCACTAAAAAACGAAGATTTTATCAGTTGCTAGATTCGGTTTACTCAGAAAC
 CTCCACACCTACTCCTTCCCCGATGCTACACCAACTCACACCGATTAATCTCTATGGACCCATCTTTT
 GCCACGCTCCACGGATAAAAATCAGATGATGAACTTGTAGAAATGGTTATAAACCCATATATTCACCAG
 TTACCCAGTAAGTCTGGTACACCAGGAAATACCATGCCTTTGAGAATATTTCTTCCCCAGAAAGTTC
 TCCAGAAATAAGAGACGCCTTATAGTCAAGAGGGATGACAGATCTCAACCATGTTAACATTGGGG
 CCTTTTAGAAATCTAATTTAACTGAACTGGGTCTGCAAGAAAATAAGACTATTGGTTATACGAGCCCTA
 GGAGTAGGACTGAAGTCAACAGCAGTGTCTGGAGAAAAGGAACCTGTGTCAGACCTTCAGTACGCA
 CGATGCAGTTGAGCCAAGTGCCTACATAAAAACCTGGAACGCCTGCACATGACAGGCTGAGCCAAAC
 AGCCAAGTGGACTCGACTCACTCTGGACGGGCACAATGTATTCTTCTGGGTAAGAGCCCTGACAGAA
 CAGGAGTTAACTTCTCAGTGAATCCAAGTGGAGACCTGACACCCTCGCATCAGTTGGAGGTTGGAGG
 AGGCTTCCGAATAAGTGAGTCAAAGTGCCTGATGCAGGATGATACTAGAGGCATGTTTATGGAAACAACT
 GTGTTTTGACTTCCGAAGATGGCTTGTATCTGGTTTCGGACGGACTGTTAATGACAATTTGATCGACG
 GGAATTGCACACCCAGAAATCCACCACAAAAGAAAAGGTTTCTCTATTAGAATACCGTAAGAGACAACG
 TGAAGCTAGGAAAAGTGGCTTAAGACAGAGAAGTTCCTACTATTAGTGTATCACCCCATGCAAGTGGAA
 AGCTTGAGCAACAATGGTATGGCTGTGCCAGCAGTAATGACAATGGGGAGCAGGTGGACCACACTGCTA
 GCCTACCTTTACCAACACCAGCTACAGTTTATAATGCCACTTCTGAAGAACTAGCAATAACTGCCCTGT
 TAAGGATGCTACTGCTAGTGAGAAGAAATGAACCAGAAGTTCAATGGACTGCCTCAACTTCAGTGGAAACA
 GTCAGAGAAAAGGAGTTATCAGAGAGCTTTACTTCTCAGTGATCACCGAAAAGATAAAGATAGTGGGGGAG
 AATCACCATGTGTCTCATGTTACCCGAGTCATGTTTCACTTTCACCTTCACTATTCAAATCACATACC
 CCAGTTGCAAGCTAAGGGCCAGTCCCTTCTTTCAGTGAAGTATGGAAGACCCTGATCCTGAAAATCCA
 GAACCCACAACACGAATGAATGTCATCCCCAGATACTTCTCAAATACTTGTAAGAGTCCCTCAAAAA
 TGAGCAAGCCTGGTTACCTGGATCTGTAACTTCTGCTCAAGCACACGGGAAAATATTACAAAACCCAGA
 TCCCAATGGGACTCCACAGTTAGTGCATCCGAAGTGAAGTGGTGTTCACCTAAAAACAGAGCTCCAA
 CAAAAACAGTATCAAATAACAACCAAGCACTTTCAAAGAATCATCCTCCTCAGACACAGTTTCGTAATT
 CATCTGAGCAACTTTACAAAAGCTGCCTTCTGTGCCAACAAAAGTGCCTGCTCCATCACCTCACCT
 AGAAAACTCCTCAAAGTCAACACGCTCACACACCTGTACAGCATGGTTATCTTTCACCAAAGCCTCCT
 TCACAGCAGTTAGGATCTCCCTACAGGCCTCATCATTACAGTCACCTCAAGTTGGAACACCTCAGCGAG
 AGCCTCAAAGAACTTTTATCCAGCAGCACAGAACCTTCCAGCCAATACTCAGCAGGCAACTTCTGGAAC
 ATTATTTACACAGACACCCTCAGGACAATCTTACGCAACATACAGTCAGTTTAAACCAACAAAGTCTGAAC
 AGCACGGCACCACCCCTCCACCTCCTCCACCTCCTTCTCGTCTTACTATCAAACCCAGCAGCCCTCTG
 CAAACTTTCAGAATTATAATCAGCTCAAAGGTAGTCTTTCTCAACAACTGTGTTTACATCAGGACCAAA
 TCAAGCACTTCTGGCACCACAAGCCAGCAACAGTTCAGGACACCACGTGACTCCAGGCAATTTTTTG
 CCCTCTCAGAACCCTACCATTACCATCAAAGTGTGCTGCCGTAGTCCCCCTCCTCCTCCACCACCAC
 CTGCTCCAGGACCGCACCTTGTACAACAGCCGAATTTCCATCAGCAACACTCTGTAGCACATGTAGTAGG
 GCCTGTTTATGCGGTACCCCTGGGTCGCATATTCATTCTCAAAGTGTGGACACCACCTTACCCCAACCC
 CCACCCCTCCTGGTCTGCCCTCATCACCATCCACCACCCATCCATCCACAGGACTCCAAGGTCTAC

AAGCACAAACCAGCATGTTGTAATTCAGCACCCCCACCACCCCTCCGCCGCCACCTCCAGTGT
 GGCTTCTGGGCATCATACCACATCAGCTCAAGCCTTACACCACCCACCTCATCAAGGACCTCCACTTTT
 CCTTCGAGTGCTCATCCAAGTACCACCGTATCCCTCACAAGCTACACATCATACCACCTTTGGGACCG
 GACCCAGCACCAGCCTTCTGGAACAGGGCCACATTGTCCATTACCTGTACAGGTCTCATCTCCAGCC
 CCAAGGACCAAACAGTATCCAACACCTACTGCTTCAGGGTCTGTCTCATCTGGCTCTGTGGCCCTG
 CCACATGGGGTTCAAGGACCTCAGCAGGCATCTCCAGTGCCTGGACAGATTCAAATTCACAGAGCACAGG
 TGCCACCAACATTTCAAACAATTACCATGGGTGAGGGTGGCAT

ACGCGTACGCGGCCGCTCGAG - GFP Tag - GTTTAA

Protein Sequence:

>RG214671 representing NM_182931
 Red=Cloning site Green=Tags(s)

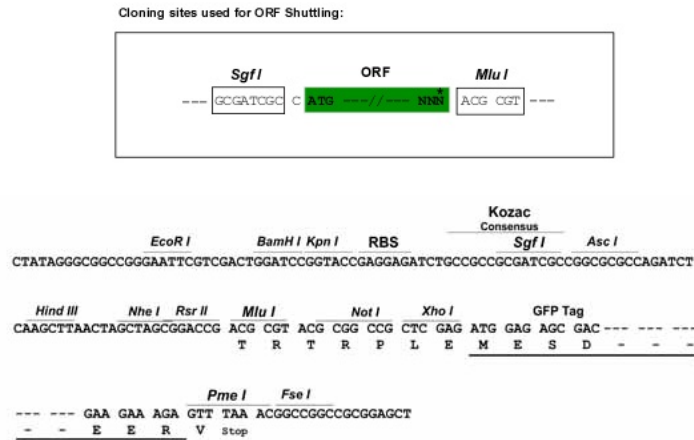
MSIIVPLGVDTAETSYLEMAAGSEPESEVESPVVVEKSNSYPHQLYTSSSHSHSYIGLPYADHNYGARP
 PPTPPASPPPSVLI SKNEVGIFTPNFDETSATTISTEDGSYGTVDVTRICGFTHDDGYMICCDKCSV
 WQHIDCMGIDRQHIDPTYL CERCQPRNLDKERAVLLQRRKRENMSDGDTSATESGDEVPVELYAFQHTP
 TSITLTASRVSKVNDKRRKKSQEKEQHISKCKAFREGSRKSSRVKGSAPIDPSSDGSNFGWETIKAW
 MDRYEEANNQYSEGVQREARIALRLGNGNDKEMNKSDLNTNLLFKPPVESHQKNNKILKSAKDL
 PDALIIIEYRGKFMLEQFEANGYFFKRPYPFVLFYSKFHGLEMCVDARTFGNEARFIRRSTPNAEVRHE
 IQDGTIHLIYIYSIHSIPKGTETIAFDYGNCKYKVDCAKLENPECPVLKRSSSESMENINSGYETRRK
 KGKDKDISKEKDTQONITLDCEGTTNKMSPETKQRKLSPLRLSVSNNQEPDFIDDIIEKTPISNEVE
 MESEEQIAERKRKMTREERKMEAILQAFARLEKREKRREQALERISTAKTEVKTECKDTQIVSDAEVIQE
 QAKEENASKPTPAKVNRTKQRKFSRSRTHIGQQRRRHRTVSMCSDIQPSSPDIEVTSQNDIENVTI
 EPETETALAEIITETEPALNKCPKYPKTKKHLVNEWLSEKNEKTGKPSDGLSERPLRITTDPEVLATQ
 LNSLPGLTYSHPHYSTPKHYIRFTSPFLSEKRRRKEPTENISGSKKRWLKQALEEENSAILHRFNPCQ
 ERSRSPAVNGENKSPDLLNDSCSLPDLTTLKRRFYQLLDSVYSETSTPTSPYATPHTDITPMDPSF
 ATPPRIKSDDETCRNGYKPIYSPVTPVTPGTPGNTMHFENISSPESSPEIKRRTYSQEGYDRSSTMLTLG
 PFRNSNLTEGLQEIKTIGYTSRPRTEVNRQCPGEKEPVSDLQLGLDAVEPTALHKTLETPAHDRAPN
 SQLDSTHSGRGTMYSWVKSPDRTGVMNFSVNSNLRDLTPSHQLEVGGGFRISESKCLMQDDTRGMFMETT
 VFCTSEDGLVSGFGRTVNDNLIDGNCTPQNPQKKVSLLEYRKRQREARKSGSKTENFPLISVSPHAGS
 SLNNNGDCASSNDNGEQVDHTASLPLPTPATVYNATSEETSNPCPVKDATASEKNEPEVQWTASTSVEQ
 VRERSYQRALLLSDHRKDKSGGESPCVSCSPSHVQSSPSSSHNHIPQLQAKGPVPSFSELMEDPDPENP
 EPTTTNECPSPDTSQNTCKSPPKMSKPGSPGSVIPAQAHGKIFTKPDPQWDSTVSASEAENGVHLKTELQ
 QKQLSNNQALSKNHPPQTHVRNSSEQLSQKLPSVPTKLHCPPSPHLENPPKSSTPHTPVQHGYLSPKPP
 SQQLGSPYRPHHSQSPQVGTQREPQRNFYPAQNLPANTQQATSGTLFTQTPSGQSSATYSQFNQQLN
 STAPPPPPPPSSSYQNQQPSANFQNYNQLKGLSQQTVFTSGPNQALPGTTSQQTVPGHVTPGHFL
 PSQNPTIHHQTAAAVPPPPPPPPAPGPHLVQQPNHQHVAHVVPVHVTGSHIHSQTAGHHLPPP
 PPPPGPAPHHHPHPSTGLQGLQAQHVVNSAPPPPPPPSSVLSAGHHTSAQALHHPHQGPPLF
 PSSAHPTVPPYPSQATHHTLGGPQHQPSTGPHCLPVTGPHLQPPGPNIPPTASGFCPHPGSVAL
 PHGVQGPQASPVPGQIPIHRAQVPPFTQNNYHSGSWH

TRTRPLE - GFP Tag - V

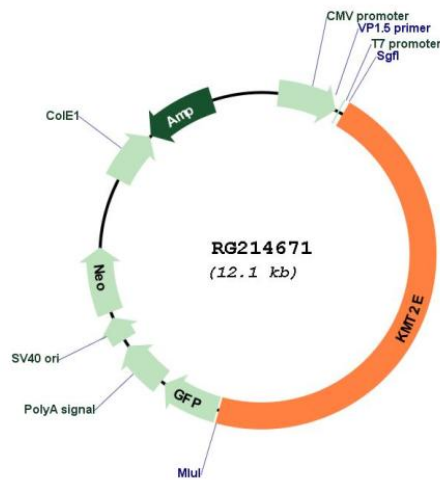
Restriction Sites:

SgfI-MluI

Cloning Scheme:



Plasmid Map:



ACCN: NM_182931
 ORF Size: 5574 bp

OTI Disclaimer:	<p>Due to the inherent nature of this plasmid, standard methods to replicate additional amounts of DNA in E. coli are highly likely to result in mutations and/or rearrangements. Therefore, OriGene does not guarantee the capability to replicate this plasmid DNA. Additional amounts of DNA can be purchased from OriGene with batch-specific, full-sequence verification at a reduced cost. Please contact our customer care team at custsupport@origene.com or by calling 301.340.3188 option 3 for pricing and delivery.</p> <p>The molecular sequence of this clone aligns with the gene accession number as a point of reference only. However, individual transcript sequences of the same gene can differ through naturally occurring variations (e.g. polymorphisms), each with its own valid existence. This clone is substantially in agreement with the reference, but a complete review of all prevailing variants is recommended prior to use. More info</p>
OTI Annotation:	This clone was engineered to express the complete ORF with an expression tag. Expression varies depending on the nature of the gene.
Components:	The ORF clone is ion-exchange column purified and shipped in a 2D barcoded Matrix tube containing 10ug of transfection-ready, dried plasmid DNA (reconstitute with 100 ul of water).
Reconstitution Method:	<ol style="list-style-type: none"> 1. Centrifuge at 5,000xg for 5min. 2. Carefully open the tube and add 100ul of sterile water to dissolve the DNA. 3. Close the tube and incubate for 10 minutes at room temperature. 4. Briefly vortex the tube and then do a quick spin (less than 5000xg) to concentrate the liquid at the bottom. 5. Store the suspended plasmid at -20°C. The DNA is stable for at least one year from date of shipping when stored at -20°C.
RefSeq:	NM_182931.3
RefSeq Size:	7139 bp
RefSeq ORF:	5577 bp
Locus ID:	55904
UniProt ID:	Q8IZD2
Cytogenetics:	7q22.3
Protein Families:	Druggable Genome
Gene Summary:	<p>This gene is a member of the myeloid/lymphoid or mixed-lineage leukemia (MLL) family and encodes a protein with an N-terminal PHD zinc finger and a central SET domain. Overexpression of the protein inhibits cell cycle progression. Alternate transcriptional splice variants have been characterized. [provided by RefSeq, Jul 2008]</p>