

Product datasheet for **RG214648**

HEPHL1 (NM_001098672) Human Tagged ORF Clone

Product data:

Product Type:	Expression Plasmids
Product Name:	HEPHL1 (NM_001098672) Human Tagged ORF Clone
Tag:	TurboGFP
Symbol:	HEPHL1
Synonyms:	HJDD; ZP
Mammalian Cell Selection:	Neomycin
Vector:	pCMV6-AC-GFP (PS100010)
E. coli Selection:	Ampicillin (100 ug/mL)
ORF Nucleotide Sequence:	>RG214648 representing NM_001098672 Red=Cloning site Blue=ORF Green=Tags(s)

TTTTGTAATACGACTCACTATAGGGCGGCCGGAATTCGTCGACTGGATCCGGTACCGAGGAGATCTGCC
GCC**CGATCGCC**

ATGCCTCGGAAGCAGCCAGCTGGCTGCATCTTTCTCCTCACATTCCTGGGTCTGTCTGGGCTGGTTGGCA
CAGTTACCAGAACGTAACATTGGGATTGTGGAAGAATACTGGAACATGTACCCCAAGGAAGAATGT
TATTACTGGGAAAAGTTTACAGAAAGCAAACTGCAACCTTATTTCTCGAAAGAGGGCCCAACAGGATA
GGCAGTATTTACAAAAGGCTGTTTACAGACGCTTACGGATGGAACCTACTCCATAGAGATCCCCAAC
CTCCCTGGCTTGATTCTGGGCCCATCTTGAGGGCCGAAGTGGGTGATGTGATTGTCATTCATTTAAA
GAACTTTGCTTCTCGACCTTACTCTCTGCATCCACATGGCGTTTTCTACAACAAAGATTCAGAAGGAGCC
CTATACCCAGATGGAACATCTGGAAGGAACAAAAATGATGACATGGTTCCTCCTGGGAAAAACTACACCT
ACGTCTGGCCGGTGAGAGAAGAATATGCACCTACTCCAGCCGATGCCAACTGCCTGACCTGGGTGTACCA
TTCGCACATCGACGCCCAAGGACATCTGCTCTGGGCTAATTGGGCCCTGCTGGTCTGCAAGGAAGGT
ATCCTGAATAGATATTCAGGGACACGGAATGATGTGGATCGAGAGTTTGTATAATGTTTACTCTTGTGG
ATGAGAATCAAAGCTGGTACCTCAATGAAAATATCAAACATTTCTGCACCAACCTGATTCAGTTGACAA
GAAAGATGCTGTTTTCCAGAGGAGTAACAAAATGCATGCCCTCAATGGATACCTCTCGGAACTCCCG
GAGCCTGATATGTGTGGGAGAACTGTGCTCCTGGCACCTATTTGGAATGGGGAATGAAATAGACATCC
ATTCTATCTATTTCTATGGTAACACCTTCAATCAGCAGAGGGCATCGGACTGATGTCGTCAACCTGTTCCC
AGCCACCTTCTTACAACAGAAATGATAGCCGAGAATCCTGGGAAGTGGATGATAACCTGCCAGGTGAGC
GACCACCTACAAGCTGGTATGCTGGGCAATACAATGTTGATAACTGCAAAAGTATTTTTCTACCCCA
AGATGAAGGGTCAACAGAGGCGCTACTTTATAGCAGCTGAAAAAATCTTTGGGATTATGCTCCTCAAGG
CTATAACAAATTCAGTGGTCTTCTCTAAACGCCTCTGGCAGTACTCTGATCTCTACTTACACAAGGG
GACAACAGAATAGGAGGAAAATACTGGAAGTTCCGGTACTGAATTTGTTGATGCAACTTTTACTAAAA
GAAAGAGACTCTCTGCTGAAGAAGCCCATCTTGAATTCTTGCCAGTCATCAAGGCAGAGGTGGGTGA
TACCCTGTAGTGACCTTGCCAAACAGCCGACAAGGTCTATAGCATTTTACCCATGGTGTGATCTAT



[View online »](#)

GACAAGGCATCTGATGCAGCCCCAACCTAGATGGATTTGTGAAACCAGGGGCGCATGTTAAACCAGGTG
AAACCTTCACATACAAGTGGACAGTGCCTGAGAGCGTAAGCCAACTGCTGGTGATCCTCCCTGTCTGAC
CTATCTTTACTTCTCAGCAGTTGATCCAATTAAGGACACCAGCTCTGGCCTGGTAGGGCCTTTGCTAGTC
TGTA AAAAGGGCGTCTCAATGCTGATGGGACACAGAAAGGAATAGACAAGGAGTTTTACCTACTGTTCA
CAGTCTTTGATGAGAATCTGAGCAGATATTTTGATGAAAACATTCAGAAGTTTATCTGGCATCCCTTCAG
CATTGACAAAAGAGATAAAGAGTTTGTGAAATCCAACCGAATGCATGCTGTTAACGGCTACATGTATGCC
AACCAGCCAGGCTTAAACATGTGTA AAAAGGGATAGAGTTTCTGGCATCTGATTGGATTGGCAGCTGACA
CTGACATGCATGGAATTGTTTTCAAGGGAACACCATCCACCTACGAGGGACTCACCGAGACTCCCTGGC
CCTGTTTTCCCATGGCCACAACAGCATTTCATGCAGCCAGACCATGCAGGTATTTTTAGGGTGTGTTGT
GCCACCATGCCCCACCTCTCGAGAGGCATGGGTGATCTATGAGGTGAGCAGCTGTGACAACAGGGACC
CTTCTGAGCAGCGGTACGGGATGATAAGAACTTTTTACATCGCCGCTGAAGAAAGTAGAATGGGATTATGC
CCCTAACAAAACTGGGAGTTCGAAAAGCAGCAGTGGACGCAAGAGGGGAAAGACATGGAGATATATTT
ATGAACCCGACTGAAAATTGGATTGGCTCTCAGTACAAGAAGTGGTTTACAGGGAAATACGGATGGAG
AATTTGTGGAGATCAAAGCCCGACCACCAGAGAGGAGCACTTAGAACTCTGGGCCAATGATTATGC
TGAGGTGGGCAACACCGTCTGATCATATTTAAGAACAAAGCCAGTAGGCCCTACTCCATCTCAGCCCAG
GGTGTGGAGGAGATGGATAGTGGAAAGCAATCCAAGTGCCATGACAAAACCAGGAGAAGTAAAACTT
ATAGATGGAATATCCCTAAAAGATCCGGTCCAGGGCCTTCTGATCCCAATTGTATTCCATGGGTTACTA
TTCAACAGTAACTTTGTGAAGGATACGTATAGTGGTTTGATGGGTCTCTGATTACATGCCGAAAAGGA
GTCTTGAATGAAAAGGGAAGAAGAAGTGACGTTGATTATGAATTTGCTCTCTTGTGTTTTGGTATTTAATG
AGAATGAATCCTGGTATCTGGATGACAATTAAGAAGTATCTCAACAAAGATCCACGAGATTTTAAGCG
CACTGATGATTTTGAGGAAAGCAACAGAATGCATGCCATTAATGGAAAGATTTTGGGAATCTCCATGGC
CTCATAATGAACGAAGATACAATGACAACTGGTATTTGTTAGGGATAGGAAGTGAAGTGGACATACATA
CCATCCATTATCATGCTGAGAGCTTTCTTTTCAAATAGATAAATCTTACCGAGAAGATGTGTATGATCT
CTTTCCTGGGACATTCAAACCATTGAACTGTTTGCAGATCACCCAGGGACATGGCTGCTACACTGTCAT
GTGCTGACCACATCCATGCTGGCATGGAGACAACCTACACGGTCTTCGTAACATAGACAACAGGATTC
CTTACTCCACCACATCTCCTGGAGTGGCATCTCACCCAGCCACGGTGCCATCTAACGAACGACCTGGCAA
AGAGCAGCTCTATTTCTTTGGCAAGAACTCTGGTCCAACAGGAGCCAAGGCAGCCTTGGTCATCCTTTTC
ATCATTGGACTCCTCTTCTAATCACACGGTATTCTCTCCCTCAGACTCTGCTCTGCAATGAAGCAGA
CAGATTACCAGCAAGTCCAGTCTGTGCTCTCCCCACGGATGCTCTG

ACGCGTACGCGGCCGCTCGAG - GFP Tag - GTTTAA

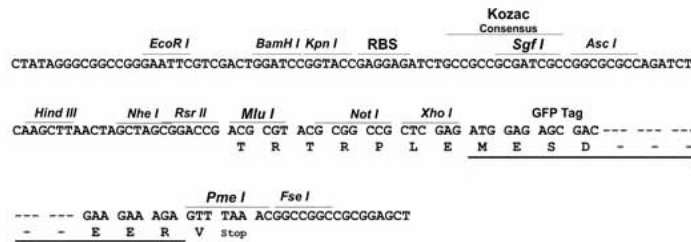
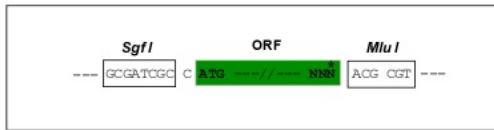
Protein Sequence: >RG214648 representing NM_001098672
 Red=Cloning site Green=Tags(s)

MPRKQPAGCIFLLTFLGLSGLVGTVTRTYIIGIVEEYWNYPQGNVITGKSFTEDKLATLFLERGNRI
 GSIYKKAVERYRRFTDGTYSIEIPKPPWLGFLGPLRAEVDVIVHLKNFASRPYSLPHPGVFYNKDSEGA
 LYPDGTSGRNKNDMVPKGYTYVWPVREEYATPADANCLTWVYHSHIDAPKDICSGLIGPLLCKEG
 ILNRYSGTRNDVDREFFVIMFTLVNENQSWYLNENIKHFCTNPDSVDKDAVDFQRSNMKHALNGYLFGNFP
 EPDMCVGESVSWHLFGMGNEIDIHSIYFYGNFTFISRGHRTDVVNLFPATFLTTEMIENPGKWMITCQVS
 DHLQAGMLGQYNVDNCKSDIFYPKMKGQRRYFIAAEKILWDYAPQGYNKFSGLPLNASGSDSLYFTQG
 DNRIGGKYWKVRYTEFVDATFTKRKRLSAAEHLGILGPVIAEVDGTLVTFANKADKVVYILPHGVIY
 DKASDAAPNLDFVKGPAHVKPGGETFTYKWTVPESVSPTAGDPPCLTYLFSAVDPKIDTSSGLVGPLLV
 CKKGVLNADGTQKIDKEFYLLFTVFDENLSRYFDENIQKFIWHPFIDKEDKEFVKSNRMHAVNGMYG
 NQPGLNMCKRDRVSWHLIGLGTDTDMHGIVFQNGTIHLRGTHRDSLALFPHMATTAFMQPDHAGIFRVFC
 ATMPHLSRGMQIYEVSSCDNRDPSEQRGMIRTFYIAAEVEWDYAPKNWFEKQHVDAERHGDIF
 MNRTENWIGSQYKVVYREYTDGEFVEIKARPPREEHLELLGPMIHAEVGNTVLIIFKNKASRPYSISAQ
 GVEEMDSGKQFQVPMTPKGEVKTYRWNIPKRSRGPSPDNCIPWVYYSTVNFVKDYSGLMGPLITCRKG
 VLNEKGRSDVDYEFALLFLVFNENESWYLDNKKYLNKDPDRDFKRTDDFEESNRMHAINKIFGNLHG
 LIMNEDMTNWYLLGIGSEVDIHTIHYHAESFLFKIDKSYREDVYDLFPGTFQTIELFADHPGTWLLHCH
 VSDHIHAGMETTYTLRNIIDNRPYSTTSPGVASHPATVPSNERPGKEQLYFFGKNLGPTGAKAALVILF
 IIGLLLLITTVILSLRLCSAMKQTDYQQVQSCALPTDAL

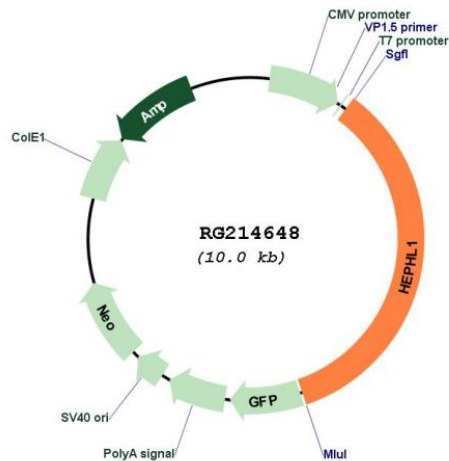
TRTRPLE - GFP Tag - V

Restriction Sites: SgfI-MluI
 Cloning Scheme:

Cloning sites used for ORF Shuttling:



Plasmid Map:



ACCN: NM_001098672

ORF Size: 3477 bp

OTI Disclaimer: The molecular sequence of this clone aligns with the gene accession number as a point of reference only. However, individual transcript sequences of the same gene can differ through naturally occurring variations (e.g. polymorphisms), each with its own valid existence. This clone is substantially in agreement with the reference, but a complete review of all prevailing variants is recommended prior to use. [More info](#)

OTI Annotation: This clone was engineered to express the complete ORF with an expression tag. Expression varies depending on the nature of the gene.

Components: The ORF clone is ion-exchange column purified and shipped in a 2D barcoded Matrix tube containing 10ug of transfection-ready, dried plasmid DNA (reconstitute with 100 ul of water).

Reconstitution Method:

1. Centrifuge at 5,000xg for 5min.
2. Carefully open the tube and add 100ul of sterile water to dissolve the DNA.
3. Close the tube and incubate for 10 minutes at room temperature.
4. Briefly vortex the tube and then do a quick spin (less than 5000xg) to concentrate the liquid at the bottom.
5. Store the suspended plasmid at -20°C. The DNA is stable for at least one year from date of shipping when stored at -20°C.

RefSeq: [NM_001098672.2](#)

RefSeq Size: 5951 bp

RefSeq ORF: 3480 bp

Locus ID: 341208

UniProt ID: [Q6MZM0](#)

Cytogenetics: 11q21

Protein Families: Transmembrane

Gene Summary: May function as a ferroxidase and may be involved in copper transport and homeostasis.
[UniProtKB/Swiss-Prot Function]