

Product datasheet for **RG214641**

Myosin 8 (MYH8) (NM_002472) Human Tagged ORF Clone

Product data:

Product Type:	Expression Plasmids
Product Name:	Myosin 8 (MYH8) (NM_002472) Human Tagged ORF Clone
Tag:	TurboGFP
Symbol:	MYH8
Synonyms:	DA7; gtMHC-F; MyHC-peri; MyHC-pn
Mammalian Cell Selection:	Neomycin
Vector:	pCMV6-AC-GFP (PS100010)
E. coli Selection:	Ampicillin (100 ug/mL)
ORF Nucleotide Sequence:	>RG214641 representing NM_002472 Red=Cloning site Blue=ORF Green=Tags(s)

TTTTGTAATACGACTCACTATAGGGCGGCCGGAATTCGTCGACTGGATCCGGTACCGAGGAGATCTGCC
GCC**CGATCGCC**

ATGAGTGCAGCTCAGACGCTGAGATGGCTGTTTTGGCGAAGCTGCTCCCTACCTCGAAAATCAGAAA
AGGAGCGGATTGAGGCCAAAACAAGCCGTTTGTGCTAAAACATCTGTCTTTGTGGCGGAGCCCAAGGA
ATCCTATGTGAAGAGCACTATACAAAGCAAAGAAGGAGGGAAAGTAACCGTAAAGACTGAAGGTGGAGCA
ACTCTAACTGTCAGGGAAGACCAAGTCTCCCTATGAACCCTCCGAAATATGACAAAATTGAGGACATGG
CCATGATGACTCATCTACACGAGCCTGGAGTGCTACAACCTCAAAGAGCGCTATGCAGCCTGGATGAT
CTACACCTACTCAGGCCTTCTGTGTCACCGTCAACCCCTACAAGTGGCTGCCGGTGTACAAGCCCGAG
GTGGTGGCTGCCTACAGAGGCAAAAAGCGCCAGGAGGCCCGCCCCACATCTTCTCCATCTCTGACAATG
CCTATCAGTTCATGTTGACTGATCGAGAGAATCAGTCCATCCTGATCACCGGAGAATCTGGTGCCGAAA
GACTGTGAACACCAAGCGTGTCACTCCAATACTTTGCAACAATTGCAGTTACTGGAGAGAAGAAGAAGGAT
GAATCTGGCAAAATGCAGGGGACTCTGGAAGATCAAATCATCAGCGCCAATCCCCACTGGAGGCCCTTTG
GCAATGCCAAAACCGTGAGGAATGACAACCTCTCGCTTTGGTAAATTCATTAGAATCCACTTTGGTAC
TACAGGGAAGCTGGCATCTGCTGATATAGAAACATATCTTTAGAAAAGTCCAGAGTTACTTTCCAGCTA
AAGGCGGAAAGAAGCTACCATATTTTTATCAGATCACTCCAATAAGAAGCCAGATCTAATTGAAATGC
TCCTGATCACCACCAACCATATGACTATGCCTTCGTCAGTCAGGGGGAGATCACAGTCCAGTATTGA
TGACCAAGAAGAGTTGATGGCCACTGATAGTGCCATTGACATCCTGGGCTTCACTCCTGAAGAGAAAGTG
TCCATCTATAAACTCACAGGGGCTGTGATGCATTATGGGAACATGAAATTCAGCAAAAAGCAGCGTGAGG
AGCAAGCTGAGCCAGATGGCACAGAAGTCGCTGACAAGGCAGCCTATCTCCAGAGTCTGAACTCTGCAGA
CCTACTCAAAGCCCTCTGCTACCCTAGGGTCAAGGTTGGCAATGAGTATGTCACCAAAGGCCAGACTGTG
CAGCAGGTGTACAATGCCGTGGGTGCTCTGGCCAAAGCCGCTACGAGAAGATGTTCTGTGGATGGTCA
CCCGCATCAACCAGCAGCTGGACACCAAGCAGCCAGGCAGTACTTCATCGGGTCTTGGACATTGCTGG
CTTTGAAATCTTTGATTTAACAGCCTGGAGCAGCTGTGCATCAACTTCAACCAACGAGAACTGCAACAG



TTTTCAACCACCACATGTTTGTGCTAGAGCAGGAGGAGTACAAGAAGGAAGGCATCGAGTGGACGTTCA
TTGACTTTGGGATGGACCTGGCTGCCTGCATTGAGCTCATTGAGAAGCCACTGGGCATCTTCTCCATCCT
GGAAGAGGAGTGCATGTTCCCTAAGGCCACGGACCTCCTTCAAGAACAAGCTGTATGACCAGCACCTG
GGCAAGTCTGCCAACTCCAGAAGCCAAAGGTGGTCAAAGGAAGGCTGAGGCCACTTCTCTGATTC
ACTATGCTGGCACTGTGGACTACAACATTACTGGCTGGCTGGACAAAAAATAGGACCCCTGAATGATAC
TGTGGTTGGGCTGTACCAGAAGTCTGCAATGAAGACTCTAGCCAGTCTCTTTCCACGTATGTCTAGTGT
GAAGCAGATAGCAGCGCGAAGAAAGGTGCTAAGAAAAAGGGCTCTTCTTCCAGACTGTGTCCGCTTT
TCAGGGAAAAATTTAAATAAATTGATGACGAATCTGAGGAGCACACCCCTCACTTCGTACGGTGTATCAT
TCCAATGAAACCAAACTCCTGGGCAATGGAACATGAACTTGTGTGCCAGCTGAGGTGTAATGGT
GTGCTGGAAGGCATCCGCATCTGTAGGAAAGGATTCCAAGCAGAATCTTATATGGTGATTTCAAACAAA
GATACAAGGTTTTAAATGCAAGTCTATTCCAGAGGGACAGTTTATTGACAGCAAGAAGGCTTCTGAGAA
ACTTCTTGATCTATTGATATTGATCATACTCAATATAAATTTGGACATACCAAGTTTTCTCAAAGCT
GGACTTCTGGGTCTTCTGGAAGAAATGAGAGATGAAAAATAGCCCAAATATAACAAGAACACAAGCTG
TCTGTAGGGGATTCTAATGAGGGTAGAATATCAGAAGATGTTGCAAAGGAGAGAAGCACTTTTCTGCAT
CCAGTATAATGTCCTGCCTTCATGAACGTCAAGCACTGGCCCTGGATGAAACTCTTTTCAAGATTAAG
CCCTCCTCAAGAGTGCAGAGACCGAGAAGAGATGGCCACCATGAAGGAAGAATTCAGAAAAACCAAG
ATGAACTCGCAAGTCAAGGCAAAAACGGAAGGAGCTAGAGGAAAAAATGGTCACTCTTAAAAAGAGAA
AAATGACCTGCAACTCCAGTTCAATCTGAAGCAGATAGCTTGGCTGATGCAGAGGAAAGGTGTGAGCAA
CTGATTAACAAACAAATCCAATTTGAGGCCAAAATCAAAGAGGTGACTGAAAGAGCTGAGGAGGAGGAAG
AGATCAATGCTGAGCTGACAGCCAAGAAGAGAAAACTGGAGGATGAATGTTTCAAGCACTCAAGAAAGCAT
TGATGACCTTGAAGTGCAGCTGGCCAAAGTTGAGAAGCAGAAACATGCCACGGAGAACAAGGTGAAAAAT
CTTACAGAAGAGATGGCAGGCCCTGGATGAAACCTTGAAGAACTGTTCAAGGAGAAGAAGGCTCTCCAAG
AGACCCACCGAGCAGCCCTGGATGACCTGCAGGAGGAGGACAAAGTCAACATCCTGACCAAGCTAA
AACCAAGCTAGAACAGCAAGTGGATGATCTTGAAGGGTCTCTGGAACAAGAAAAAGAAAGCTTCAAGTGGAT
CTAGAAAGAGCAAAAGCGGAACTGGAGGGTACCTCAAATTTGGCCCAAGAAATCCACAATGGATATGGAAA
ATGACAAACAGCAACTTGATGAAAAGCTTGAAGAAAGAAATTTGAAATCAGCAATTTGATAAGCAAAAT
TGAAGATGAGCAAGCTGTAGAAATCAACTACAGAAGAAGATCAAAGAGTTGCAGGCCCGCATTGAGGAG
CTGGGGGAAGAAATCGAGGCAGAGAGGGCGTCCCAGCCAAAGCGGAGAAGCAGCGCTCTGACCTCTCCC
GGGAACGGAGGAGATCAGCGAGAGGCTGGAAGAAGCCGGTGGGGCAACTTCTGCTCAGGTGGAATTGAA
CAAGAAGCGGGAGGCTGAGTTTCAGAACTGCGCAGGGACCTGGAGGAGGCCACCCTGCAGCATGAAGCT
ATGGTGGCTGCTCTTCGGAAGAAGCAGCAGACAGTATGGCTGAGCTTGGGGAGCAGATTGACAACCTTGC
AGCGGGTCAAACAGAAGCTGGAGAAGGAGAAGAGTGAAGTGAAGATGGAGACTGATGACCTCAGCAGTAA
CGCAGAGGCCATTTCAAAGCCAAGGGCCACCTTGAAAAGATGTGCCGCTCTCTAGAAGATCAAGTGAAGT
GGGCTTAAGCAAGGAAGAGGAGCAGCAGCGGCTGATCAATGACCTCACAGCACAGAGAGCGCGCTGC
AGACAGAAGCGGGTGAATATTCTCGACAATTAGATGAGCAAGATGCTTTAGTCTCTCAGCTTTCAAGGAG
CAAGCAAGCATCTACTCAGCAGATTGAAGAGCTGAAACATCAACTAGAGGAAGAACTAAAGCCAAGAAC
GCCCTGGCACACGCCCTGCAGTCTCCCAGCATGACTGCGACCTGCTGCGGGAACAGTATGAGGAAGAGC
AGGAAGGCAAGCTGAGCTGCAGAGGGCGCTGTCCAAGGCCAACAGTGAAGTTGCCAGTGGAGAACC
ATACGAGACGGATGCCATCCAGCGCACAGAGGAGCTGGAGGAGGCCAAGAAAAAGTTGGCCAGCGCTG
CAAGAAGCTGAGGAACATGTAGAAGCTGTGAACGCCAAAATGTGCTTCCCTTGAGAAGACGAAGCAGCGGC
TCCAGAATGAAGTGAAGACCTCATGCTTGTGAAAGGTCTAATGCAGCCTGTGCAGCCCTTGATAA
GAAGCAAGGAACCTTTGACAAGGTCTATCAGAAATGGAAGCAGAAGTATGAGGAACTCAGGCTGAACTT
GAGGCCTCCCAGAAGGAGTCACTTCTTCTAGCACTGAGCTGTTCAAGGTGAAGAATGTCTATGAGGAAT
CCCTGGATCAACTCGAAACGCTAAGAAGAGCACATAAGAAGTGAACAGGAGATTTCTGACCTCACTGA
GCAGATTGCAGAGGGAGGAAAGCAAATTCATGAATTTGAGAAAAATAAGAAGCAAGTGAACAAGAGAAA
TGTGAAATTCAGGCTGCTTTAGAGGAAGCAGAGGCATCTCTTGAACATGAAGAAGGAAAGATTCTGCGTA
TCCAGCTTGAGTTAAACCAAGTCAAGTCTGAAGTTGATAGAAAAATCGCAGAAAAGGATGAGGAAATTTGA
CCAGCTGAAGAGAAACCACTAGAGTCTGGAGACAATGCAGAGCACGCTGGATGCAGAGATTAGAAGC
AGAAATGATGCTCTGAGAGTCAAGAAGAAAAATGGAAGGAGATCTGAATGAAATGGAATCCAGCTGAACC
ATGCCAATCGCTTAGCTGCAGAGAGTTTAAAGAACTACAGGAACACCCAAAGGAATCCTGAAGGAAACCA
GCTCCACCTGGATGATGCTCTCCGGGGCCAGGAGGACCTCAAGGAACAGCTGGCAATTTGGAGCGCAGA
GCCAACCTGCTGCAGGCTGAGATCGAGGAGCTGTGGGCCACTCTGGAACAGACAGAGAGAAGCAGGAAAA

TCGCCAACAGGAGCTCCTGGATGCCAGTGAGCGTGTCCAGCTCCTCCACACCCAGAATACCAGTCTCAT
 TAACACCAAGAAGAAATTAGAAAATGACGTTTCCCAACTCCAAAGTGAAGTGGAAGAAGTAAATCCAAGAA
 TCACGCAATGCAGAAGAGAAAGCCAAGAAGGCCATCACTGATGCTGCCATGATGGCTGAGGAGCTGAAGA
 AGGAACAGGACACCAGCGCCACCTGGAGCGGATGAAGAAGAACCTGGAGCAGACGGTGAAGGACCTGCA
 GCATCGTCTAGATGAGGCCGAGCAGCTGGCGTGAAGGGTGGGAAGAAGCAGATCCAGAACTGGAGGCC
 AGGGTACGTGAGCTTGAAGGAGAGGTTGAAAATGAACAGAAACGTAATGCAGAGGCTGTTAAAGGTTTAC
 GGAAACATGACCCAGAGTAAAAGAACTCACCTACCAGACTGAAGAAGATCGCAAGAATGTTCTCAGGCT
 GCAGGACTTGGTAGATAAATTACAGGCGAAGGTGAAATCATAACAAGAGACAAGCTGAGGAGGCTGAGGAA
 CAATCCAATGCTAATCTATCTAAATCCGCAAACCTCCAGCATGAGCTGGAGGAGGCCGAGGAACGGGCTG
 ACATTGCTGAGTCCCAGGTCAACAAATTGCGAGTGAAGAGCCGAGAGGTTACACAAAAATCAGTGCAGA
 G

ACGCGTACGCGGCCGCTCGAG – GFP Tag – GTTTAA

Protein Sequence:

>RG214641 representing NM_002472
 Red=Cloning site Green=Tags(s)

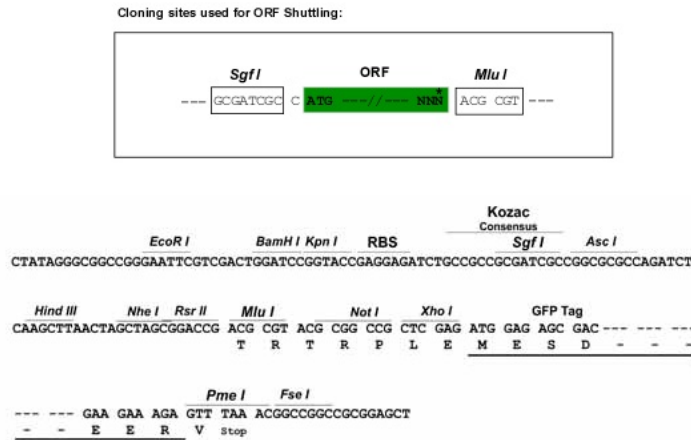
MSASSDAEMAVFGEAAPYLKSEKERIEAQNKPFDAKTSVFVAEPKESYVKSTIQSKEGGKVTVKTEGGA
 TLTVDREDQVPMNPPKYDKIEDMAMMTHLHEPGLVNLKERYAAMIYTYSGLCVTVNPKWLPVYKPE
 VVAAYRGGKRQEAPPHIFISIDNAYQFMLTDRENQSILITGESGAGKTVNTRKVIQYFATIAVTGEKKK
 ESGKMQGTLEDQIISANPLLEAFGNAKTVRNDNSRFGKIRIHFHTGKLASADIETYLLEKSRVTFQL
 KAERSYHIFYQITSNKKPDLIEMLLITNPNYDYAFVSQGEITVPSIDDEELMATDSAIDILGFTPEEKV
 SYKLTGAVMHYGNMFKQKQREEQAEPDGTEVADKAAYLQSLNSADLLKALCYPRVKVGNVYVTKGQTV
 QQVYNVAVGALAKAVYEKMFWMVTRINQLDTKQPRQYFIGVLDIAGFEIFDFNSLEQLCINFTNEKLQQ
 FFNHMFVLEQEEYKKEGIEWTFIDFGMDLAACIELIEKPLGIFILEEECMFPKATDTSFKNKLYDQHL
 GKSANFQKPKVVKGAEAHFSLIHYAGTVDYNITGWLDKNKDPNDTVVGLYQKSAMKTLASLFSTYASA
 EADSSAKKGAKKGSFQTVSALFRENLNKLMNLRSTHHPHFVRCIIPNETKTPGAMEHELVLHQLRCNG
 VLEGIRICRKGFPSTRILYGDFKQRYKVLNASAIPEGQFIDSKKASEKLLASIDIDHTQYKFGHTKVFKA
 GLLGLLEEMRDEKLAQIITRTQAVCRGFLMRVEYQKMLQRREALFCIQYNVRAFNMVVKHWPWMLFFKIK
 PLLKSAIETEKEMATMKEEFQKTKDELAKSEAKRKELEEKMVTLLKEKNDLQLQVQSEADSLADAEERCEQ
 LTKNKIQLEAKIKEVTERAEIEEIEINAELTAKKRKLEDECESELKKDIDDLLETLAKVEKQHATENKVK
 LTEAMGLDETI AKLSKEKKALQETHQQLDDLQAEEDKYNILTKAKTKLEQQVDDLEGSLEQEKKLRMD
 LERAKRKEGLDLKLAQESTMDMENDKQQLDEKLEKKEFEISNLISKIEDEQAVEIQLQKKIKELQARIEE
 LGEEIEAERASRAKAEKQRSDL SRELEEISERLEEAGGATSAQVELNKKREAEFQKLRRDLEEATLQHEA
 MVAALRKKHADSMAELGEQIDNLQRVKQKLEKEKSELKMETDDLSSNAEAI SKAKGHLEKMCRSLEDQVS
 GLKTKEEEQQLINDLTAQRARLQTEAGEYSRQLDEQDALVSQLSRSKQASTQQIEELKHQLEEETKAKN
 ALAHALQSSRHDCDLLREQYEEQEGKAEQLRALSKANSEVAQWRTKYE TDAIQRTEELEAKKLAQRL
 QEAEHVEAVNAKASLEKTKQRLQNEVEDLMLDVERSNAACAALDKKQRNFDKVLSEWKQKYEETQAE
 EASQKESRSLSTELFKVKNVYEEESLDQLETLRRAHKNLQQEISDLTEQIAEGGKIHELEKIKKQVEQEK
 CEIQAAL EEAASLEHEEGKILRIQLELNQVKSEVDRKIAEKDEEIDQLKRNHTRVVTMSTLD AEIRS
 RNDALRVKMKMEGDLNEMIEQLNHANRLAAESLRNYRNTQGILKETQLHLDDALRGQEDLKEQLAIVERR
 ANLLQAEIEELWATLEQTERSRIAEQELLDASERVQLLHTQNTSLINTKKKLENDVSQLQSEVEEVIQE
 SRNAEEKAKKAITDAAMAEELKKEQDTS AHLERMKNLEQTVKDLQHRLDEAEQLALGGKKQIQKLEA
 RVRELEGEVENEQKRNAEAVKGLRKHDRRVKELTYQTEEDRKNVLRQLVDKQLQAKVKS YKRQAEAEAE
 QSNANLSKFRKLQHELEEAERADIAESQVNKL RVKSREVTHTKISAE

TRTRPLE – GFP Tag – V

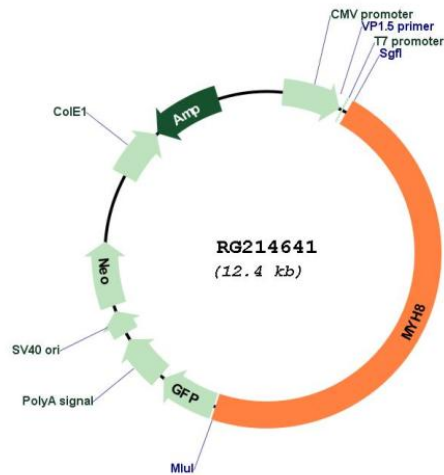
Restriction Sites:

SgfI-MluI

Cloning Scheme:



Plasmid Map:



ACCN:

NM_002472

ORF Size:

5811 bp

OTI Disclaimer:

The molecular sequence of this clone aligns with the gene accession number as a point of reference only. However, individual transcript sequences of the same gene can differ through naturally occurring variations (e.g. polymorphisms), each with its own valid existence. This clone is substantially in agreement with the reference, but a complete review of all prevailing variants is recommended prior to use. [More info](#)

OTI Annotation:	This clone was engineered to express the complete ORF with an expression tag. Expression varies depending on the nature of the gene.
Components:	The ORF clone is ion-exchange column purified and shipped in a 2D barcoded Matrix tube containing 10ug of transfection-ready, dried plasmid DNA (reconstitute with 100 ul of water).
Reconstitution Method:	<ol style="list-style-type: none">1. Centrifuge at 5,000xg for 5min.2. Carefully open the tube and add 100ul of sterile water to dissolve the DNA.3. Close the tube and incubate for 10 minutes at room temperature.4. Briefly vortex the tube and then do a quick spin (less than 5000xg) to concentrate the liquid at the bottom.5. Store the suspended plasmid at -20°C. The DNA is stable for at least one year from date of shipping when stored at -20°C.
RefSeq:	<u>NM_002472.1</u> , <u>NP_002463.1</u>
RefSeq Size:	6016 bp
RefSeq ORF:	5814 bp
Locus ID:	4626
UniProt ID:	<u>P13535</u>
Cytogenetics:	17p13.1
Protein Pathways:	Tight junction, Viral myocarditis
Gene Summary:	Myosins are actin-based motor proteins that function in the generation of mechanical force in eukaryotic cells. Muscle myosins are heterohexamers composed of 2 myosin heavy chains and 2 pairs of nonidentical myosin light chains. This gene encodes a member of the class II or conventional myosin heavy chains, and functions in skeletal muscle contraction. This gene is predominantly expressed in fetal skeletal muscle. This gene is found in a cluster of myosin heavy chain genes on chromosome 17. A mutation in this gene results in trismus-pseudocamptodactyly syndrome. [provided by RefSeq, Sep 2009]