

## Product datasheet for **RG214610**

### **RIC8 (RIC8B) (NM\_018157) Human Tagged ORF Clone**

#### **Product data:**

Product Type:	Expression Plasmids
Product Name:	RIC8 (RIC8B) (NM_018157) Human Tagged ORF Clone
Tag:	TurboGFP
Symbol:	RIC8B
Synonyms:	hSyn; RIC8
Mammalian Cell Selection:	Neomycin
Vector:	pCMV6-AC-GFP (PS100010)
E. coli Selection:	Ampicillin (100 ug/mL)



[View online »](#)

**ORF Nucleotide Sequence:**

>RG214610 representing NM\_018157  
 Red=Cloning site Blue=ORF Green=Tags(s)

TTTTGTAATACGACTCACTATAGGGCGGCCGGAATTCGTCGACTGGATCCGGTACCGAGGAGATCTGCC  
 GCC**GCGATCGCC**

ATGGATGAGGAGCGCCCTCTACATCGTCCGGCCGGCAAGCAGGGGCTATCGAGCGGGTCTGAGGG  
 ATTACAGCGACAAGCATAGGGCTACTTTCAAATTTGAATCAACAGATGAAGATAAAAAGAAAGAACTCTG  
 TGAAGGCATATTTAAAGTCCTTATAAAGGACATCCCAACAACATGTCAAGTGTCTGCTGGAACTACTC  
 CGCATTCTCTCCAGAGACAAAAGGTTTTAGTTCTGTGACAACAAAGGAAAATATGCAGATACTGCTGC  
 GACTAGCCAAGCTAAATGAGTTAGATGATCTTTGGAGAAAGTATCAGAGTTCCAGTTATTGTGGAGTC  
 ATAAAAATGTCTGTGTAATATAGTGTTCACACAGTCAGATGGCACAGCAGCTCAGCCTGGAACCTAATCTT  
 GCTGCAAAGCTCTGTAACCTCTGAGAAAGTGAAGGACCGGAAATTTATCAATGACATTAAGTGCCTTG  
 ACTTGCCTTCTCTTCTGTCACTTTTGCACACCGACATCAGGTCACAATTGCGCTATGAGCTCCA  
 GGGACTACCGCTGCTAACGCAGATCTTGGAAAGTGCCTTTAGCATCAAGTGGACCGATGAGTATGAATCG  
 GCCATAGACCATAATGGACCTCCTCTCACCTCAGGAGACAGACTGTGCCATTGAGGCCCTCAAAGCTC  
 TCTTCAATGTGACGGTAGACAGTTGGAAGGTGCATAAAGAGAGTGATTCTCATCAGTTCCGTGTAATGGC  
 AGCTGTCTTCGTCATTGTTTACTAATCGTAGGTCCTCAACTGAAGACAAAACAGAAGAGCTACACAGCAAT  
 GCAGTCAACCTTTAAGCAATGTTCCAGTCTCTTGTGGATGTTCTCATTTGTCGGTTAACCCATGAAG  
 AAACAGCCCAAGAGGCAACGACTCTAGATGAACTGCCAGTAATAAACAGCTGAGAAAGAAACAGTTTT  
 GAAAAACAATACCATGGTATACAATGGTATGAATATGGAGGCCATTCATGTTTTACTGAATTTATGGAG  
 AAGAGAATAGACAAGGGAAGCAGCTATAGAGAGGGTCTAACTCCAGTTCTCAGCTTATTAACCGAATGTT  
 CCCGACCCATCGAAACATCCGAAAATTTCTCAAAGATCAGTTTTACCACCGTTGAGGGATGTGACAAA  
 TCGACCTGAAGTTGGCTCAACTGTGAGAAATAAGCTGGTGGCCTCATGACACATGTTGACCTTGGAGTC  
 AAGCAAATGCTGCTGAATTCCTTTTTGCTTTGCAAAGAGAGAGTGGATAGTCTGCTGAAATACACTG  
 GCTATGGGAATGCTGCAGGACTTTGGCGCCAGGGCCCTCTGGCTGGAGGAAGAGGAGATAATTGGTA  
 CTCAGAGGATGAGGACACAGACTGAAGAATACAAAAATGCAAAACAAAAGAGGAGTTGCTTAAACCA  
 ATGGGACTAAAACCTGATGGGACAATAACGCCTTTGGAGGAAGCACTCAACCAGTACTCTGTCATCGAAG  
 AGACCAGCTCTGACACAGAC

**ACGCGTACGCGGCCGCTCGAG** – GFP Tag – GTTTAA

**Protein Sequence:**

>RG214610 representing NM\_018157  
 Red=Cloning site Green=Tags(s)

MDEERALYIVRAGEAGAIERVLRDYSKHRATFKFESTDEDKRRKLCGIFKVLIKDIPTTCQVSCLEVL  
 RILSRDKKVLVPVTTKENMQILLRLAKLNELDDSLEKVFEPVIVESLKCLCNIVFNSQMAQQLSLELNL  
 AAKLCNLLRKCKDRKFINDIKCFDLRLLFLLSLLHTDIRSQLRYELQGLPLLQIILESAFSIKWDEYES  
 AIDHNGPPLSPQETDCAIEALKALFNVTVDVSWKVHKESSHQFRVMAAVLRHCLLIVGPTEDKTEELHSN  
 AVNLLSNVPVSCLDVLICPLTHEETAQEATTLDELPSNKTAEKETVLRKNTMVMYNGMMEAIHVLLNFME  
 KRIDKGSYREGLTPVLSLLTECSRHRNIRKFLKDQVLPPLRDVTNRPEVGSTVRNKLVRMLMTHVDLGV  
 KQIAAEFLFVLCKERVDSLLKYTYGNAAGLLAARGLLAGGRGDNWYSEDEDTDTEEYKNAKPKEELLKP  
 MGLKPDGTITPLEEALNQYSVIEETSSDTD

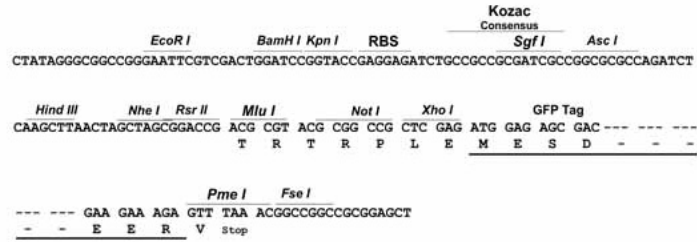
**TRTRPLE** – GFP Tag – V

**Restriction Sites:**

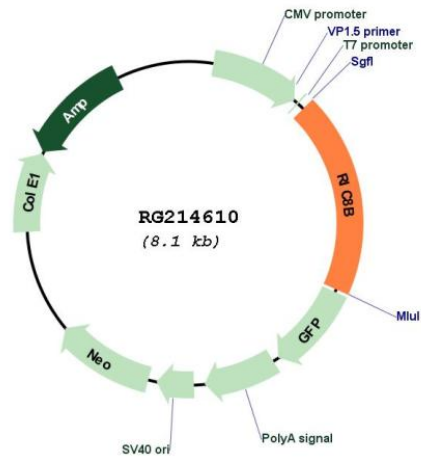
Sgfl-MluI

**Cloning Scheme:**

Cloning sites used for ORF Shutting:



**Plasmid Map:**



<b>ACCN:</b>	NM_018157
<b>ORF Size:</b>	1560 bp
<b>OTI Disclaimer:</b>	The molecular sequence of this clone aligns with the gene accession number as a point of reference only. However, individual transcript sequences of the same gene can differ through naturally occurring variations (e.g. polymorphisms), each with its own valid existence. This clone is substantially in agreement with the reference, but a complete review of all prevailing variants is recommended prior to use. <a href="#">More info</a>
<b>OTI Annotation:</b>	This clone was engineered to express the complete ORF with an expression tag. Expression varies depending on the nature of the gene.
<b>Components:</b>	The ORF clone is ion-exchange column purified and shipped in a 2D barcoded Matrix tube containing 10ug of transfection-ready, dried plasmid DNA (reconstitute with 100 ul of water).
<b>Reconstitution Method:</b>	<ol style="list-style-type: none"><li>1. Centrifuge at 5,000xg for 5min.</li><li>2. Carefully open the tube and add 100ul of sterile water to dissolve the DNA.</li><li>3. Close the tube and incubate for 10 minutes at room temperature.</li><li>4. Briefly vortex the tube and then do a quick spin (less than 5000xg) to concentrate the liquid at the bottom.</li><li>5. Store the suspended plasmid at -20°C. The DNA is stable for at least one year from date of shipping when stored at -20°C.</li></ol>
<b>RefSeq:</b>	<a href="#">NM_018157.4</a>
<b>RefSeq Size:</b>	4989 bp
<b>RefSeq ORF:</b>	1563 bp
<b>Locus ID:</b>	55188
<b>UniProt ID:</b>	<a href="#">Q9NVN3</a>
<b>Cytogenetics:</b>	12q23.3
<b>Gene Summary:</b>	Guanine nucleotide exchange factor (GEF), which can activate some, but not all, G-alpha proteins by exchanging bound GDP for free GTP. Able to potentiate G(olf)-alpha-dependent cAMP accumulation suggesting that it may be an important component for odorant signal transduction.[UniProtKB/Swiss-Prot Function]