

Product datasheet for **RG214608**

NRP2 (NM_201264) Human Tagged ORF Clone

Product data:

Product Type:	Expression Plasmids
Product Name:	NRP2 (NM_201264) Human Tagged ORF Clone
Tag:	TurboGFP
Symbol:	NRP2
Synonyms:	NP2; NPN2; PRO2714; VEGF165R2
Mammalian Cell Selection:	Neomycin
Vector:	pCMV6-AC-GFP (PS100010)
E. coli Selection:	Ampicillin (100 ug/mL)



[View online »](#)

ORF Nucleotide Sequence:

>RG214608 representing NM_201264
 Red=Cloning site Blue=ORF Green=Tags(s)

TTTTGTAATACGACTCACTATAGGGCGGCCGGAATTCGTCGACTGGATCCGGTACCGAGGAGATCTGCC
 GCC**CGGATCGCC**

ATGGATATGTTTCTCTCACCTGGGTTTTCTTAGCCCTCTACTTTTCAAGACACCAAGTGAGAGGCCAAC
 CAGACCCACCGTGCAGGAGTCGTTTGAATTCCAAGATGCTGGCTATATCACCTCTCCCGTTACCCCA
 GGACTACCCCTCCACCAGAAGTGCAGTGGATTGTTTACGCCCCGAACCAACCAAGAAGATTGCCTC
 AACTTCAACCCTCACTTTGAAATCGAGAAGCAGACTGCAAGTATGACTTTATCGAGATTCGGGATGGG
 ACAGTGAATCCGCAGACCTCCTGGGCAAACTGTGGAAACATCGCCCCGCCACCATCATCTCCTCGGG
 CTCATGCTCTACATCAAGTTCACCTCCGACTACGCCCGCAGGGGGCAGGCTTCTCTGCGCTACGAG
 ATCTTCAAGACAGGCTCTGAAGATTGCTCAAAAACTTACAAGCCCCAACGGGACCATCGAATCTCCTG
 GTTTTCTGAGAAGTATCCACACAACCTGGACTGCACCTTACCATCCTGGCCAAACCAAGATGGAGAT
 CATCCTGCAGTTCCTGATCTTTGACCTGGAGCATGACCCTTTCAGGTGGGAGAGGGGGACTGCAAGTAC
 GATTGGCTGGACATCTGGGATGGCATTCCACATGTTGGCCCCCTGATTGGCAAGTACTGTGGACAAAA
 CACCCTCTGAACCTCGTTTCATCGACGGGATCCTCTCCCTGACCTTTCACACGGACATGGCGGTGGCCAA
 GGATGGCTTCTCTGCGGTTACTACCTGGTCCACCAAGAGCCACTAGAGAACCTTTCAGTGAATGTTCT
 CTGGGCATGGAGTCTGGCCGGATTGCTAATGAACAGATCAGTGCCTCATCTACCTACTCTGATGGGAGGT
 GGACCCCTCAACAAAGCCGGCTCCATGGTATGACAATGGCTGGACCCCAACTTGGATTCCAACAAGGA
 GTATCTCCAGGTGGACCTGCGCTTTTTAACCATGCTCACGGCCATCGAACACAGGGAGCGATTTCCAGG
 GAAACACAGAATGGCTACTATGTCAAATCTACAAGCTGGAAGTCAAGCAACTAATGGAGAGGACTGGATGG
 TGTACCGCATGGCAAAAACCAAGGTATTTCAAGCCAACAACGATGCAACTGAGGTGGTCTGAACAA
 GCTCCACGCTCCACTGCTGACAAGGTTTGTAGAAATCCGCCCTCAGACCTGGCACTCAGGTATCGCCCTC
 CGGCTGGAGCTCTTCGGCTGCCGGTACAGATGCTCCCTGCTCCAACATGCTGGGGATGCTCTCAGGCC
 TCATTGCAGACTCCAGATCTCCGCTCTTCCACCCAGGAATACCTCTGGAGCCCCAGTGCAGCCCGCT
 GGTGAGCAGCCGCTCGGGCTGGTCCCTCGAATCCCTCAGGCCAGCCCGGTGAGGAGTGGCTTCAGGTA
 GATCTGGGAACACCAAGACAGTAAAGGTGTCATCATCCAGGGAGCCCGGGAGGAGACAGTATCACTG
 CTGTGGAAGCCAGAGCATTTGTGCGCAAGTCAAAGTCTCTACAGCCTAAACGGCAAGGACTGGGAATA
 CATTGAGACCCAGGACCCAGCAGCAAAAGTAGGCTGTTCTTGAGGCCTCTG

ACGCGTACGCGGCCGCTCGAG - GFP Tag - GTTTAA

Protein Sequence:

>RG214608 representing NM_201264
 Red=Cloning site Green=Tags(s)

MDMFPLTWWFLALYFSRHHQVRGQPDPPCGRLNSKDAGYITSPGYPDYPSHQNCEWIVYAPEPNQKIVL
 NFNPHFEIEKHDCKYDFIEIRDGSEADLLGKHCGNIAPPTIISSGSMYIKFTSDYARQGAGFLRYE
 IFKTGSEDCSKNFTSPNGTIESPGFPEKYPHNLDCTFTILAKPKMEIILQFLIFDLEHDPQVGEQDCKY
 DWLDIWDGIPHVGPLIGKYCGTKTPSELRSSTGILSLTFHTDMAVAKDGFSAARYLVHQEPLNFQCNVP
 LGMESGRIANEQISASSTYSDGRWTPQQSRLHGDDNGWTPNLDNKEYLQVDLRFLTMLTAIATQGAISR
 ETQNGYVYKSYKLEVSTNGEDWMVYRHGKNHKVFQANNDATEVVLNKLHAPLLTRFVRIRPQTWHSIAL
 RLELFGRVTDAPCSNMLGMLSGLIADSQISASSTQEYLWSPSAARLVSSRSGWFPRIQAQPGEEWLQV
 DLGTPKTVKGVIIQGARGGDSITAVEARAFVRKFKVSYSLNGKDWEYIQDPRTQQPKVGCWRPL

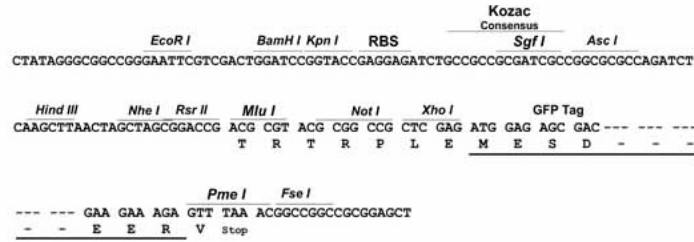
TRTRPLE - GFP Tag - V

Restriction Sites:

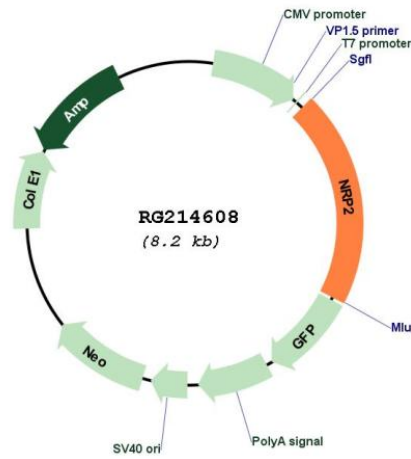
Sgfl-Mlul

Cloning Scheme:

Cloning sites used for ORF Shutting:



Plasmid Map:



ACCN:	NM_201264
ORF Size:	1665 bp
OTI Disclaimer:	The molecular sequence of this clone aligns with the gene accession number as a point of reference only. However, individual transcript sequences of the same gene can differ through naturally occurring variations (e.g. polymorphisms), each with its own valid existence. This clone is substantially in agreement with the reference, but a complete review of all prevailing variants is recommended prior to use. More info
OTI Annotation:	This clone was engineered to express the complete ORF with an expression tag. Expression varies depending on the nature of the gene.
Components:	The ORF clone is ion-exchange column purified and shipped in a 2D barcoded Matrix tube containing 10ug of transfection-ready, dried plasmid DNA (reconstitute with 100 ul of water).
Reconstitution Method:	<ol style="list-style-type: none">1. Centrifuge at 5,000xg for 5min.2. Carefully open the tube and add 100ul of sterile water to dissolve the DNA.3. Close the tube and incubate for 10 minutes at room temperature.4. Briefly vortex the tube and then do a quick spin (less than 5000xg) to concentrate the liquid at the bottom.5. Store the suspended plasmid at -20°C. The DNA is stable for at least one year from date of shipping when stored at -20°C.
RefSeq:	NM_201264.1 , NP_957716.1
RefSeq Size:	2601 bp
RefSeq ORF:	1668 bp
Locus ID:	8828
UniProt ID:	O60462
Cytogenetics:	2q33.3
Protein Families:	Druggable Genome, Transmembrane
Gene Summary:	This gene encodes a member of the neuropilin family of receptor proteins. The encoded transmembrane protein binds to SEMA3C protein {sema domain, immunoglobulin domain (Ig), short basic domain, secreted, (semaphorin) 3C} and SEMA3F protein {sema domain, immunoglobulin domain (Ig), short basic domain, secreted, (semaphorin) 3F}, and interacts with vascular endothelial growth factor (VEGF). This protein may play a role in cardiovascular development, axon guidance, and tumorigenesis. Multiple transcript variants encoding distinct isoforms have been identified for this gene. [provided by RefSeq, Jul 2008]