

Product datasheet for **RG214607**

CDK3 (NM_001258) Human Tagged ORF Clone

Product data:

Product Type:	Expression Plasmids
Product Name:	CDK3 (NM_001258) Human Tagged ORF Clone
Tag:	TurboGFP
Symbol:	CDK3
Mammalian Cell Selection:	Neomycin
Vector:	pCMV6-AC-GFP (PS100010)
E. coli Selection:	Ampicillin (100 ug/mL)
ORF Nucleotide Sequence:	>RG214607 representing NM_001258 Red=Cloning site Blue=ORF Green=Tags(s)

TTTTGTAATACGACTCACTATAGGGCGGCCGGAATTCGTCGACTGGATCCGGTACCGAGGAGATCTGCC
GCC**CGATCGCC**

ATGGATATGTTCCAGAAGGTAGAGAAGATCGGAGAGGGCACCTATGGGGTGGTGTACAAGCCAAGAACA
GGGAGACAGGGCAGCTGGTGGCCCTGAAGAAGATCAGACTGGATTTGGAGATGGAGGGGGTCCCAAGCAC
TGCCATCAGGGAGATCTCGCTGCTCAAGGAAGTGAAGCACCCCAACATCGTCCGACTGCTGGACGTGGT
CACAACGAGAGGAAGCTCTATCTGGTGTGGTTCCTCAGCCAGGACCTGAAGAAGTACATGGACTCCA
CCCCAGGCTCAGAGCTCCCCCTGCACCTCATCAAGAGCTACCTCTCCAGCTGCTGCAGGGGGTGAGTTT
CTGCCACTCACATCGGGTCATCCACCGAGACCTGAAGCCCCAGAACCTGCTCATCAATGAGTTGGGTGCC
ATCAAGCTGGCTGACTTCGGCCTGGCTCGGCCTTCGGGGTGCCCTGCGCACCTACACCCATGAGGTGG
TGACACTGTGGTATCGCGCCCCGAGATTCTCTTGGGCAGCAAGTTCTATACCACAGCTGTGGATATCTG
GAGCATTGGTTGCATCTTTCAGAGATGGTACTCGAAAAGCCCTGTTTCCTGGTACTCTGAGATTGAC
CAGCTCTTTCGTATCTTTCGTATGCTGGGGACACCCAGCGAAGACACATGGCCCCGGGTACCCAGCTGC
CTGACTATAAGGGCAGCTTCCCTAAGTGGACCAGGAAGGGACTGGAAGAGATTGTGCCAATCTGGAGCC
AGAGGGCAGGGACCTGCTCATGCAACTCCTGCAGTATGACCCAGCCAGCGGATCACAGCCAAGACTGCC
CTGGCCACCCGTAATCTCATCCCTGAGCCCTCCCCAGCTGCCCGCCAGTATGTGCTGCAGCGATTCC
GCCAT

ACGCGTACGCGGCCGCTCGAG - GFP Tag - GTTTAA



[View online »](#)

Protein Sequence: >RG214607 representing NM_001258
Red=Cloning site Green=Tags(s)

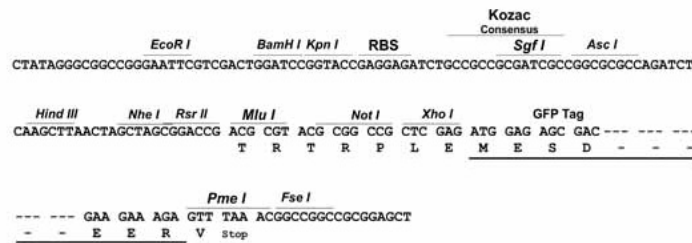
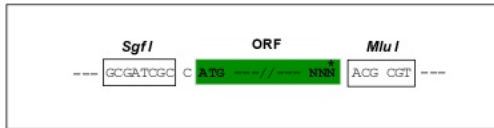
MDMFQKVEKIGEGTYGVVYKAKNRETGQLVALKKIRLDLEMEGVPSTAIRESISLLKELKHPNIVRLLDVV
 HNERKLYLVFEFLSQDLKKYMDSTPGSELPLHLIKSYLFQLLQGVSFCHSHRVIHRDLKPQNLLINELGA
 IKLADFLARAFGVPLRITYTHEVVTWLYRAPEILLGSKFYTTAVDIWSIGCIFAEMVTRKALFPGDSEID
 QLFRIFRMLGTPSEDTWPGVTQLPDYKGSFPKWTRKGLLEEIVPNLEPEGRDLLMQLLQYDPSQRITAKTA
 LAHPYFSSPEPSAARQYVLQFRFH

TRTRPLE - GFP Tag - V

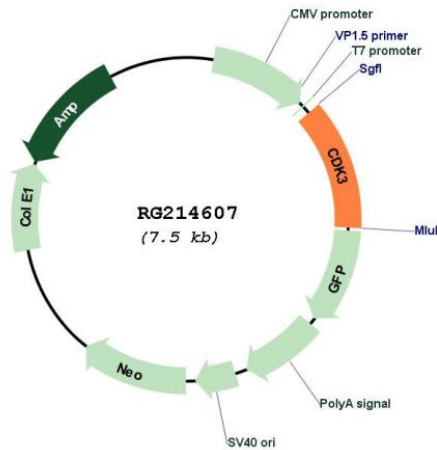
Restriction Sites: SgfI-MluI

Cloning Scheme:

Cloning sites used for ORF Shutting:



Plasmid Map:



ACCN: NM_001258

ORF Size: 915 bp

OTI Disclaimer:	The molecular sequence of this clone aligns with the gene accession number as a point of reference only. However, individual transcript sequences of the same gene can differ through naturally occurring variations (e.g. polymorphisms), each with its own valid existence. This clone is substantially in agreement with the reference, but a complete review of all prevailing variants is recommended prior to use. More info
OTI Annotation:	This clone was engineered to express the complete ORF with an expression tag. Expression varies depending on the nature of the gene.
Components:	The ORF clone is ion-exchange column purified and shipped in a 2D barcoded Matrix tube containing 10ug of transfection-ready, dried plasmid DNA (reconstitute with 100 ul of water).
Reconstitution Method:	<ol style="list-style-type: none">1. Centrifuge at 5,000xg for 5min.2. Carefully open the tube and add 100ul of sterile water to dissolve the DNA.3. Close the tube and incubate for 10 minutes at room temperature.4. Briefly vortex the tube and then do a quick spin (less than 5000xg) to concentrate the liquid at the bottom.5. Store the suspended plasmid at -20°C. The DNA is stable for at least one year from date of shipping when stored at -20°C.
RefSeq:	NM_001258.2 , NP_001249.1
RefSeq Size:	1161 bp
RefSeq ORF:	918 bp
Locus ID:	1018
UniProt ID:	Q00526
Cytogenetics:	17q25.1
Domains:	pkinase, TyrKc, S_TKc
Protein Families:	Druggable Genome, Protein Kinase
Gene Summary:	This gene encodes a member of the cyclin-dependent protein kinase family. The protein promotes entry into S phase, in part by activating members of the E2F family of transcription factors. The protein also associates with cyclin C and phosphorylates the retinoblastoma 1 protein to promote exit from G0. [provided by RefSeq, Jul 2008]