

Product datasheet for **RG214584**

WDR36 (NM_139281) Human Tagged ORF Clone

Product data:

Product Type:	Expression Plasmids
Tag:	TurboGFP
Symbol:	WDR36
Synonyms:	GLC1G; TA-WDRP; TAWDRP; UTP21
Mammalian Cell Selection:	Neomycin
Vector:	pCMV6-AC-GFP (PS100010)
E. coli Selection:	Ampicillin (100 ug/mL)



ORF Nucleotide Sequence: >RG214584 representing NM_139281
Red=Cloning site Blue=ORF Green=Tags(s)

TTTTGTAATACGACTCACTATAGGGCGCCGGGAATTCGTGCGACTGGATCCGGTACCGAGGAGATCTGCC
GCCGCGATCGCC

ATGTGTTGCACTGAGGGCAGTCTCCGAAACGCGATTGCGAGCGGGCCGGAAGCGGTGTTGTGTCTGC
AGCTCTGGCAGAGGACTGTTCCACTAGACACGCTGAAGGGACTGGGTACGTGTTTTCCCTTCAGGACCAGA
GCTGAGAGGAGCTGGGATCGCGGGCGCAATGGAACGGGCCCTCAGAAAGGCGCACGGCCAGCGCGCTTTTT
GCGGGGTTCCGGGCTTGGGACTTTTCAGCAACGACATTCCACACGTGGTGGGTTCCAGCGCGCTCAAGC
GCCGGTTCTATGTAACAACCTGCGTGGCAAGAGTTCCACACCTATGACGTTCAGAAACTTAGTCTGGT
TGCAGTAAGTAATTCTGTTCCACAGGATATCTGCTGTATGGCAGCTGATGGCAGATTAGTCTTTGGCTGCT
TATGGAAATGTTTTCTGTCATTTGCCCGTAATAAAGAGATAGTACATACCTTTAAGGGTCATAAGGCAG
AAATCCATTTCTTGAACCCCTTGGAGACCACATTATCTGTTGATACTGATGGCATTCTTATTATTTG
GCACATATATTCAGAAGAAGAATACCTGCAGTTGACTTTTGATAAATCAGTATTTAAAATTTCTGCAATT
TTGCATCCAAGTACCTACTTGAATAAAATCTTCTGGCAGTGAACAAGGAAGCCTGCAGTTGTGGAATG
TAAATCCAATAAACTTCTATATACATTTCCAGGATGGAAGTTGGAGTGACAGCTCTTCAGCAGGCACC
AGCCGTGGATGTTGTTGCTATTGGTCTTATGTCAGGTCAAGTTATCATTCAACAATTAATTTAATGAA
ACATTAATGAAGTTTCGCAAGACTGGGACCCATTACTTCAATTCATTCGCACAGATGGTCATCCAG
TAATGGCAGCTGGAAGCCCATGTGGCCATATTGGACTCTGGGATCTAGAAGACAAAAAATTAATCAACCA
AATGAGAAATGCACACTCTACAGCAATTGCCGGACTGACATTTCTCCATAGAGAGCCACTTCTTGTCCACA
AATGGCGTGACAATGCTCTTAGGATATGGATATTTGATGGTCTACAGGTGAAGGCCGACTTTTGAGAT
TCAGAATGGGTCAATAGTCTCTTACCAATATCAGATATATGGACAGAATGGACAGCAGATTCTAAG
TGCAAGTCAAGATGGAACCTTTCAGTCATTTTCCACGGTACATGAAAAATTCATAAAGAGCTGGGACAT
GGATTAATAAATAAAGAGAGTTAAACGTAAGGACTTCAGAATACCATGTCAGTGAGACTTCCACCCA
TCACAAAGTTTGCAGCAGAGGAAGCTCGTAAAAGTGACTGGGATGGTATCATTGCTTCCATCAAGGTAA
GCTATCTTGCTCAACCTGGAATATCAGAAATCTACAATAGGCGCTTACTTTCTCAAGCCAAAAGAGTTG
AAGAAAAGATGACATAAAGTGAACAGCAGTGGATATAAATCTTGTGGAAACTTTGCTGTAATTTGGCCTCT
CATCAGGAACTGTAGATGATATAACATGCAGTCTGGCATAACATCGAGGAAGTTTTGGCAAGGATCAAGC
TCACAAGGGATCTGTTAGAGGTGTCGAGTGGATGATTAACAGTTGACAGTTACAACCTGGTAGTGAA
GGATTACTCAAATCTGGAACTTAAAAACAAAATTTAATCCATTCTGTGAGCCTCAGTTCATCTCCAA
ATATCATGTTGCTACATAGGGACAGTGGCATTCTGGGACTCGCCTTGGATGACTTCTCCATTAGTGTCT
GGACATAGAAAAGTGAAGATTGTCAGAGAGTTTTCTGGACACCAAGGCCAAAATAAATGACATGGCTTTT
AGTCTGATGGTGGTAAATAAGTGTGCGATGGATTGCTCTATTAGGACTTGGGACCTTCTTCTG
GGTGCCTTAGACTGCTTTTTGTTGGACTCGGCTCCTCAATGTTTCTATGTCTCCTACTGGAGACTT
TCTGGCAACTTCCCATGTGGACCACCTTGGAAATTTATCTATGGTCCAATTTTCCCTGTATTCAAGTTGTT
TCATTACGGCCACTTCTGCGAGATTATGTCCTTCAATAGTGTGCTTCTGGTACTTGTCAAACCCAAG
ATGTAGAAGTATCAGAAGAAACAGTAGAACCAAGTGAATTGATAGAATATGATTGCCAGAACAGTT
GAATGAGCAATTGGTACTCTTCACTTCTTCTGAATCACGATGGAACCACTTCTAACCTTGTGATGTT
ATTAAGAAAAAGAATAAACCAAGGAACCCCAAGTACCAAAATCAGCACCATTTTTATTCCAAACA
TTCTTGGCCTTGTACCCAGATATGCTGCACCTGAACAAAATAATGATCCCAGCAGTCTAAAGTGGTAAA
TCTTGGAGTTTTGGCTCAAAAATCAGATTTCTGCTTGAACCTTGAAGAAGGACTGGTAAATAAATAGTAT
GACACTGCTCTCAACCTTCTGAAAGAATCAGGCCCATCAGGAATTGAAACAGAGCTGCGAAGCTTGTCTC
CTGATTGTTGGTGGTCCATAGAAGTTATGCAGAGCTTCTTGAATAAGTGGGATGATGCTGGACAGAAA
GCGTGATTTTGAAGTTAGCCAGGCATACCTTGCATTGTTTCTAAAGTTACACCTTAAAATGCTTCTTCA
GAGCCAGTACTCTAGAAGAAATAACAAATTTGTCATCCAGGTGGAAGAAAAGTGGACCCATTTGCAAT
CACTCTCAATCAAAGCATGTGATTTTAAATATCTCAAAGTGTCTTTGTTG

ACGCGTACGCGGCCGCTCGAG - GFP Tag - GTTTAA

Protein Sequence:

>RG214584 representing NM_139281

Red=Cloning site Green=Tags(s)

MCCTEGSLRKRDSQRAPEAVLCLQLWQRTVPLDTLKGLGTCFSPGPELRGAGIAAAMERASERRTASALF
 AGFRALGLFNSDIPHVRFVRSALKRRFYVTTVCVGKSFHTYDVQKLSLVAVSNSVVDICCMADGRLVFAA
 YGNVFSAFARKEIVHTFKGHKAEIHFLQPFGDHIIISVDTDGILIIWHIYSEEEYLQLTFDKSVFKISAI
 LHPSTYLNKILLGSEQGSLLWNVKSNNKLLYTFPGWKVGVTAALQQAPAVDVVAIGLMSGQVIHNIKFN
 TLMKFRQDWGPITISIFRDTGHPVMAAGSPCGHIGLWLEDKKLIQMRNAHSTAIAGLTFHLHREPLLV
 NGADNALRIWIFDPTGEGRLLRFRMGHSAPLTNIRYYQNGQQILSASQDGLTQSFSTVHEKFNKSLGH
 GLINKKRVKRGKGLQNTMSVRLPPIKFAAEEARESDWDGIIACHQKGLSCSTWNYQKSTIGAYFLKPKEL
 KKDDITATAVDITSCGNFAVIGLSSGTVDVYNNMQSGIHRGSFGKDQAHKGSVRGAVDGLNQLTVTTGSE
 GLLKFWNFKNKILIHVSLSSSPNIMLLHRDSGILGLALDDFSISVLDIETRKIVREFSGHQGQINDMAF
 SPDGRWLISAAMDCSIRTWDLPSGCLIDCFLLDSAPLNVMSPTGDFLATSHVDHLGIYLSWNSISLVS
 SLRPLPADYVPSIVMLPGTCQTQDVEVSEETVEPSDELIEYDSPEQLNEQLVTL SLLPESRWKNNLLNDV
 IKKKNKPKPKPKVPSAPFFIPTIPGLVPRYAAPEQNNDPQQSKVNNLGLVAQKSDFLKLEEGLVNNKY
 DTALNLLKESGSPGIETELRSLSPDCGGSEIVMQSFLKMIQMMLDRKRFELAQAYLALFLKLHLKMLPS
 EPVLLLEEITNLSSQVEENWTHLQSLFNQSMCILNYLKSALL

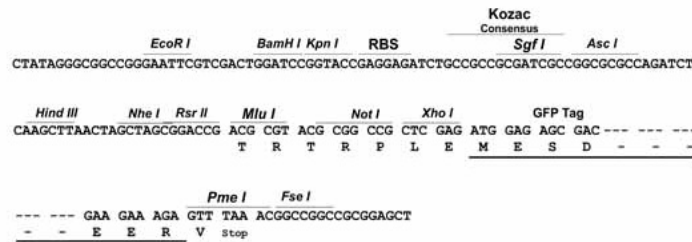
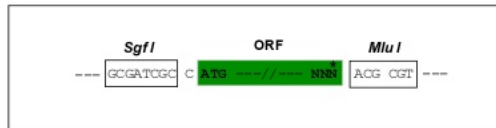
TRTRPLE - GFP Tag - V

Restriction Sites:

SgfI-MluI

Cloning Scheme:

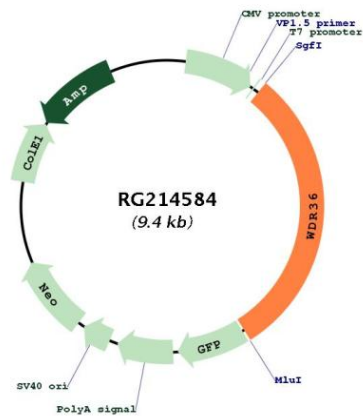
Cloning sites used for ORF Shuttling:



ACCN:	NM_139281
ORF Size:	2853 bp
OTI Disclaimer:	The molecular sequence of this clone aligns with the gene accession number as a point of reference only. However, individual transcript sequences of the same gene can differ through naturally occurring variations (e.g. polymorphisms), each with its own valid existence. This clone is substantially in agreement with the reference, but a complete review of all prevailing variants is recommended prior to use. More info
OTI Annotation:	This clone was engineered to express the complete ORF with an expression tag. Expression varies depending on the nature of the gene.
Components:	The ORF clone is ion-exchange column purified and shipped in a 2D barcoded Matrix tube containing 10ug of transfection-ready, dried plasmid DNA (reconstitute with 100 ul of water).
Reconstitution Method:	<ol style="list-style-type: none">1. Centrifuge at 5,000xg for 5min.2. Carefully open the tube and add 100ul of sterile water to dissolve the DNA.3. Close the tube and incubate for 10 minutes at room temperature.4. Briefly vortex the tube and then do a quick spin (less than 5000xg) to concentrate the liquid at the bottom.5. Store the suspended plasmid at -20°C. The DNA is stable for at least one year from date of shipping when stored at -20°C.
Note:	Plasmids are not sterile. For experiments where strict sterility is required, filtration with 0.22um filter is required.
RefSeq:	NM_139281.2 , NP_644810.1
RefSeq Size:	6611 bp
RefSeq ORF:	2688 bp
Locus ID:	134430
UniProt ID:	Q8NI36
Cytogenetics:	5q22.1
Domains:	WD40, Utp21

Gene Summary:

This gene encodes a member of the WD repeat protein family. WD repeats are minimally conserved regions of approximately 40 amino acids typically bracketed by gly-his and trp-aspartate (GH-WD), which may facilitate formation of heterotrimeric or multiprotein complexes. Members of this family are involved in a variety of cellular processes, including cell cycle progression, signal transduction, apoptosis, and gene regulation. Mutations in this gene have been associated with adult-onset primary open-angle glaucoma (POAG). [provided by RefSeq, Jul 2008]

Product images:

Circular map for RG214584