

## Product datasheet for **RG214576**

### IGSF11 (NM\_001015887) Human Tagged ORF Clone

#### Product data:

**Product Type:** Expression Plasmids  
**Product Name:** IGSF11 (NM\_001015887) Human Tagged ORF Clone  
**Tag:** TurboGFP  
**Symbol:** IGSF11  
**Synonyms:** BT-IgSF; CT119; CXADRL1; Igsf13; VSIG3  
**Mammalian Cell Selection:** Neomycin  
**Vector:** pCMV6-AC-GFP (PS100010)  
**E. coli Selection:** Ampicillin (100 ug/mL)  
**ORF Nucleotide Sequence:** >RG214576 representing NM\_001015887  
**Red=Cloning site Blue=ORF Green=Tags(s)**

TTTTGTAATACGACTCACTATAGGGCGGCCGGAATTCGTCGACTGGATCCGGTACCGAGGAGATCTGCC  
GCC**CGATCGCC**

ATGACTTCTCAGCGTTCCCTCTGGCGCCTTTGCTGCTCCTCTCTGACGGTGTGCAGCATCCCTGG  
AAGTGTCCAGAGGCCCTGGGAGTATCCAGGTGGCCGGGGTCCAGCCAGCAGTCTGCCCTGCACTTTCAC  
TACCAGCGCTGCCCTCATTAACTCAATGTCATTTGGATGGTCACTCCTCTCCAATGCCAACCACT  
GAACAGGTATCCTGTATCAGGGTGGACAGATGTTTGGTGGCCCGGTTCCACGGTAGGGTAGGAT  
TTACAGGCACCATGCCAGCTACCAATGTCTCTATCTTCAATAAACACTCAGTTATCAGACACTGGCAC  
CTACCAGTGCCTGGTCAACAACCTCCAGACATAGGGGGCAGGAACATTGGGGTACCGGTCTCACAGTG  
TTAGTTCCCCCTTCTGCCCCACTGCCAAATCCAAGGATCCCAGGATATTGGCAGCGATGTCATCTGCT  
TCTGTAGCTCAGAGGAAGGCATTCTCGACCACTTACCTTTGGGAGAAGTTAGACAATACCCTCAA  
ACCTCCAACAGCTACTCAGGACCAGGTCCAGGGAACAGTCACCATCCGGAACATCAGTGCCTGTCTTCA  
GGTTTGTACCAGTGCCTGGCTTCTAATGCTATTGGAACAGCACCTGTCTCTGGATCTCCAGGTTATTT  
CACCCAGCCAGGAACATTGGACTAATAGCTGGAGCCATTGGCACTGGTGCAGTTATTATCATTTTTTG  
CATTGCACTAATTTTAGGGCATTCTTTACTGGAGAAGCAAAAATAAAGAGGAGGAAGAAGAATAAT  
CCTAATGAAATAAGAGAGGATGATCTTCCACCAAGTGTCTTCTGCCAAAGCATTTCACACTGAGATTT  
CCTCCTCGACAACAACACTAACCTCTTCAATGCCTACAACAGTCGATACTGGAGCAACAATCCAAA  
AGTTCATAGAAACACAGAGTCAGTCAGCCACTTCACTGACTTGGGCAATCTTTCTTTTCCACTCAGGC  
AATGCCAACATACCATCCATTTATGCTAATGGGACCCATCTGGTCCCGGTCAACATAAGACTCTGGTAG  
TGACAGCCAACAGAGGTCATCACACAGGTGATGCCAGGAGCAATGGCTCAGTCAGTAGGAAGCCTCG  
GCCTCCACACTCATTCTACACCATCAGCCACGCAACTGGAACGAATTGGTGCAGTACCTGTCATG  
GTACCAGCCAGAGTCGGGCCGGTCTTGTA

**ACCGTACGCGGCCGCTCGAG** - GFP Tag - GTTTAA



[View online »](#)

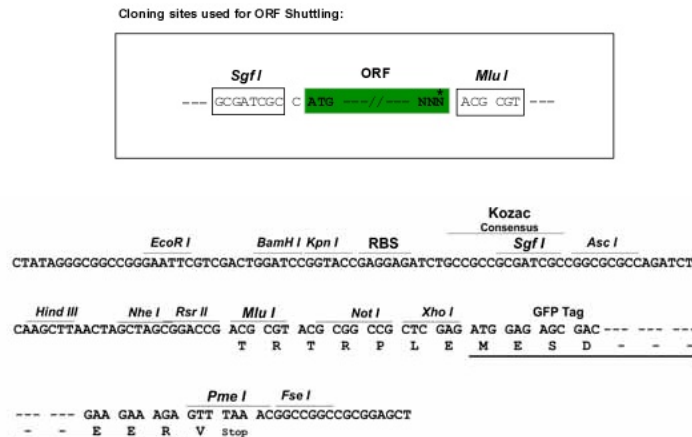
**Protein Sequence:** >RG214576 representing NM\_001015887  
 Red=Cloning site Green=Tags(s)

MTSQRSP LAPLLLL SLHGVAASLEVSESPGSIQVARGQPAVL PCTFTTSAALINLNVIWMVTPLSNANQP  
 EQVILYQGGQMF DGAPRFHGRVGF GTMPATNVSIFINNTQLSDTGT YQCLVNNLPDIGGRNIGVTGLTV  
 LVPPSAPH CQIQGSQDIGSDVILLCSSEEGIPRPTYLWEKLDNTLKL PPTATQDQVQGT VTRINISALSS  
 GLYQCVASNAIGTSTCLLDLQVISPQPRNI GLIAGAIGTGA VIIIFCIALILGAFFYWR SKNKEEEEEEEI  
 PNEIREDDLPPKCSSAKAFHTEISSSDNNTLTSSNAYNSRYWSNPKVHRNTESVSHFSDLGQSF SFHSG  
 NANIPSIYANGTHLVP GQHKTLLVVTANRGSSPQVMSRSNGSVSRKPRPPH THSYTISHATLERIGAVPVM  
 VPAQSRAGSLV

TRTRPLE – GFP Tag – V

**Restriction Sites:** SgfI-MluI

**Cloning Scheme:**



**ACCN:** NM\_001015887

**ORF Size:** 1293 bp

**OTI Disclaimer:** The molecular sequence of this clone aligns with the gene accession number as a point of reference only. However, individual transcript sequences of the same gene can differ through naturally occurring variations (e.g. polymorphisms), each with its own valid existence. This clone is substantially in agreement with the reference, but a complete review of all prevailing variants is recommended prior to use. [More info](#)

**OTI Annotation:** This clone was engineered to express the complete ORF with an expression tag. Expression varies depending on the nature of the gene.

**Components:** The ORF clone is ion-exchange column purified and shipped in a 2D barcoded Matrix tube containing 10ug of transfection-ready, dried plasmid DNA (reconstitute with 100 ul of water).

**Reconstitution Method:**

1. Centrifuge at 5,000xg for 5min.
2. Carefully open the tube and add 100ul of sterile water to dissolve the DNA.
3. Close the tube and incubate for 10 minutes at room temperature.
4. Briefly vortex the tube and then do a quick spin (less than 5000xg) to concentrate the liquid at the bottom.
5. Store the suspended plasmid at -20°C. The DNA is stable for at least one year from date of shipping when stored at -20°C.

**RefSeq:** [NM\\_001015887.3](#)

**RefSeq Size:** 3446 bp

**RefSeq ORF:** 1296 bp

**Locus ID:** 152404

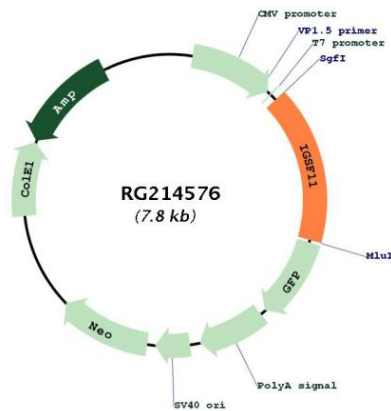
**UniProt ID:** [Q5DX21](#)

**Cytogenetics:** 3q13.32

**Protein Families:** Transmembrane

**Gene Summary:** IGSF11 is an immunoglobulin (Ig) superfamily member that is preferentially expressed in brain and testis. It shares significant homology with coxsackievirus and adenovirus receptor (CXADR; MIM 602621) and endothelial cell-selective adhesion molecule (ESAM).[supplied by OMIM, Apr 2005]

**Product images:**



Circular map for RG214576