

Product datasheet for **RG214557**

beta Catenin (CTNNB1) (NM_001098210) Human Tagged ORF Clone

Product data:

Product Type:	Expression Plasmids
Product Name:	beta Catenin (CTNNB1) (NM_001098210) Human Tagged ORF Clone
Tag:	TurboGFP
Symbol:	CTNNB1
Synonyms:	armadillo; CTNNB; EVR7; MRD19; NEDSDV
Mammalian Cell Selection:	Neomycin
Vector:	pCMV6-AC-GFP (PS100010)
E. coli Selection:	Ampicillin (100 ug/mL)



[View online »](#)

ORF Nucleotide Sequence:

>RG214557 representing NM_001098210
 Red=Cloning site Blue=ORF Green=Tags(s)

TTTTGTAATACGACTCACTATAGGGCGGCCGGGAATTCGTCGACTGGATCCGGTACCGAGGAGATCTGCC
 GCC**CGCATCGCC**

ATGGCTACTCAAGCTGATTTGATGGAGTTGGACATGGCCATGGAACCAGACAGAAAAGCGGCTGTTAGTC
 ACTGGCAGCAACAGTCTTACCTGGACTCTGGAATCCATTCGGTGCCACTACCACAGCTCCTTCTCTGAG
 TGGTAAAGGCAATCCTGAGGAAGAGGATGTGGATACCTCCCAAGTCTGTATGAGTGGGAACAGGGATTT
 TCTCAGTCCTTCACTCAAGAACAAGTAGCTGATATTGATGGACAGTATGCAATGACTCGAGCTCAGAGGG
 TACGAGCTGCTATGTTCCCTGAGACATTAGATGAGGGCATGCAGATCCCCTACACAGTTTGTGCTGC
 TCATCCCCTAATGTCCAGCGTTTGGCTGAACCATCACAGATGCTGAAACATGCAGTTGTAACCTTGATT
 AACTATCAAGATGATGCAGAATGGCCACACGTGCAATCCCTGAACTGACAAAACGCTAAATGACGAGG
 ACCAGGTGGTGGTAAATAAGGCTGCAGTTATGGTCCATCAGCTTCTAAAAAGGAAGCTCCAGACACGC
 TATCATGCGTTTCTCTCAGATGGTGTCTGCTATTGTACGTACCATGCAGAATACAATGATGTAGAAACA
 GCTCGTTGTACCGCTGGGACCTTGCCATAACCTTTCCCATCATCGTGAGGGCTTACTGGCCATCTTTAAGT
 CTGGAGGCATTCCTGCCCTGGTGAATGCTTGGTTCCACAGTGGATTCTGTGTTGTTTTATGCCATTAC
 AACTCTCCACAACCTTTTATTACATCAAGAAGGAGCTAAAATGGCAGTGCCTTTAGCTGGTGGGCTGCAG
 AAAATGGTTGCCTTGCTCAACAAAACAAATGTTAAATCTTGGCTATTACGACAGACTGCCTTCAAATTT
 TAGCTTATGGCAACCAAGAAAGCAAGCTCATCATACTGGCTAGTGGTGGACCCCAAGCTTTAGTAAATAT
 AATGAGGACCTATACTTACGAAAACACTACTGTGGACCACAAGCAGAGTGTGAAGGTGCTATCTGTCTGC
 TCTAGTAATAAGCCGGCTATTGTAGAAGCTGGTGAATGCAAGCTTTAGGACTTCACCTGACAGATCCAA
 GTCAACGCTTTGTTCAGAAGTCTTTGGACTCTCAGGAATCTTTCAGATGCTGCAACTAAACAGGAAGG
 GATGGAAGGTCTCCTTGGGACTCTTGTTCAGCTTCTGGGTTTCAGATGATATAAATGTGGTCACCTGTGCA
 GCTGGAATTTCTTCTAACCTCACTTGAATAATTATAAGAACAAGATGATGGTCTGCCAAGTGGGTGGTA
 TAGAGGCTCTTGTGCGTACTGTCCTTCGGGCTGGTACAGGGAAGACATCACTGAGCCTGCCATCTGTGC
 TCTTCGTCATCTGACCAGCCGACACCAAGAAGCAGAGATGGCCAGAATGCAGTTCGCCTTCACTATGGA
 CTACCAGTTGTGGTTAAGCTCTTACACCCACCATCCCCTGGCCTCTGATAAAGGCTACTGTTGGATTGA
 TTCGAAATCTTGCCTTTGTCCCGCAAATCATGCACCTTTGCGTGAGCAGGGTGCCTTCCACGACTAGT
 TCAGTTGCTTGTTCGTGCACATCAGGATACCCAGCGCGTACGTCCATGGGTGGGACACAGCAGCAATTT
 GTGGAGGGGGTCCGCATGGAAGAAATAGTTGAAGTTGTACCGGAGCCCTTACATCCTAGCTCGGGATG
 TTCACAACCGAATTGTTATCAGAGGACTAAATACCATTCCATTGTTTGTGAGCTGCTTTATTCTCCCAT
 TGAACACATCAAAGAGTAGCTGCAGGGTCTCTGTGAACCTGCTCAGGACAAGGAAGTGCAGAAGCT
 ATTGAAGCTGAGGGAGCCACAGCTCCTCTGACAGAGTTACTTCACTCTAGGAATGAAGGTGTGGCGACAT
 ATGCAGCTGCTGTTTTGTTCCGAATGTCTGAGGACAAGCCACAAGATTACAAGAAACGGCTTTCAGTTGA
 GCTGACCAGCTCTCTCTCAGAACAGAGCCAATGGCTTGGAAATGAGACTGCTGATCTTGGACTTGATATT
 GGTGCCCAGGGGAGAACCCTTGGATATCGCCAGGATGATCCTAGCTATCGTCTTTTCACTCTGGTGGAT
 ATGGCCAGGATGCCTTGGTATGGACCCCATGATGGAACATGAGATGGGTGGCCACCACCCTGGTGTGA
 CTATCCAGTTGATGGGCTGCCAGATCTGGGGCATGCCAGGACCTCATGGATGGGCTGCCTCCAGGTGAC
 AGCAATCAGCTGGCCTGGTTTGATACTGACCTG

ACGCGTACGCGGCCGCTCGAG - GFP Tag - GTTTAA

Protein Sequence: >RG214557 representing NM_001098210
 Red=Cloning site Green=Tags(s)

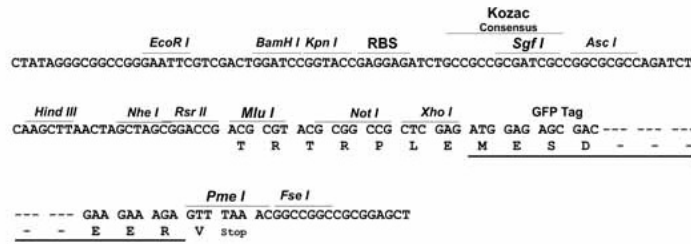
MATQADLMELDMAMEPDRKAAVSHWQQSYLDSGIHSGATTTAPSLSGKGNPEEEDVDTSQVLYEWEQGF
 SQSFTQEQVADIDGOYAMTRAQRVRAAMFPETLDEGMQIPSTQFDDAAHPTNVQRLAEPMSQLKHAVVNL
 NYQDDAELATRAIPELTKLLNDEDQVVVNKAAMVHQLSKKEASRHAIMRSPQMVSIVRTMQNTNDVET
 ARCTAGTLHNLSSHREGLLAIFKSGGIPALVKMLGSPVDSVLFYAITTLHNLHLHQEGAKMAVRLAGGLQ
 KMVALLNKTNVKFLAITTDCLQILAYGNQESKLIILASGGPQALVNIMRITYTYEKLLWTTSRVLKVL SVC
 SSNKPAIVEAGGMQALGLHLTDPQSRLVQNCLWTLRNLSDAATKQEGMEGLLGTLVQLLGSDDINVTCA
 AGILSNLTCNNYKNMMVCQVGGIEALVRTVLRAGDREDITEPAICALRHLTSRHQEAEMAQNAVRLHYG
 LPVVVLLHPPSHWPLIKATVGLIRNLALCPANHAPLREQAIPRLVQLLVRAHQDTQRRTSMGGTQQQF
 VEGVRMEEIVEGCTGALHILARDVHNRI VIRGLNTIPLFVQLLYSPIENIQRVAAGVLC ELAQDKEAAEA
 IEAEGATAPL TELLHSRNEGVATYAAAVLFRMSEDKPQDYKKRLSVELTSSLFRTEPMAWNETADLGLDI
 GAQGEPLGYRQDDPSYRSFHSGGYGQDALGMDPMMHEMGGHHPGADYPVDGLPDLGHAQDLMDGLPPGD
 SNQLAWFDTDL

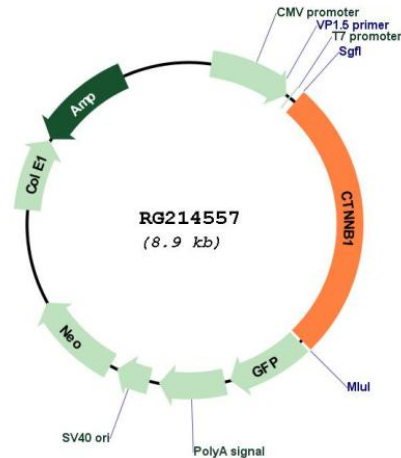
TRTRPLE - GFP Tag - V

Restriction Sites: SgfI-MluI

Cloning Scheme:

Cloning sites used for ORF Shuttling:



Plasmid Map:


ACCN: NM_001098210

ORF Size: 2343 bp

OTI Disclaimer: Due to the inherent nature of this plasmid, standard methods to replicate additional amounts of DNA in *E. coli* are highly likely to result in mutations and/or rearrangements. Therefore, OriGene does not guarantee the capability to replicate this plasmid DNA. Additional amounts of DNA can be purchased from OriGene with batch-specific, full-sequence verification at a reduced cost. Please contact our customer care team at custsupport@origene.com or by calling 301.340.3188 option 3 for pricing and delivery.

The molecular sequence of this clone aligns with the gene accession number as a point of reference only. However, individual transcript sequences of the same gene can differ through naturally occurring variations (e.g. polymorphisms), each with its own valid existence. This clone is substantially in agreement with the reference, but a complete review of all prevailing variants is recommended prior to use. [More info](#)

OTI Annotation: This clone was engineered to express the complete ORF with an expression tag. Expression varies depending on the nature of the gene.

Components: The ORF clone is ion-exchange column purified and shipped in a 2D barcoded Matrix tube containing 10ug of transfection-ready, dried plasmid DNA (reconstitute with 100 ul of water).

Reconstitution Method:

1. Centrifuge at 5,000xg for 5min.
2. Carefully open the tube and add 100ul of sterile water to dissolve the DNA.
3. Close the tube and incubate for 10 minutes at room temperature.
4. Briefly vortex the tube and then do a quick spin (less than 5000xg) to concentrate the liquid at the bottom.
5. Store the suspended plasmid at -20°C. The DNA is stable for at least one year from date of shipping when stored at -20°C.

RefSeq:	NM_001098210.2
RefSeq Size:	3256 bp
RefSeq ORF:	2346 bp
Locus ID:	1499
UniProt ID:	P35222
Cytogenetics:	3p22.1
Protein Families:	Druggable Genome, ES Cell Differentiation/IPS, Transcription Factors
Protein Pathways:	Adherens junction, Arrhythmogenic right ventricular cardiomyopathy (ARVC), Basal cell carcinoma, Colorectal cancer, Endometrial cancer, Focal adhesion, Leukocyte transendothelial migration, Melanogenesis, Pathogenic Escherichia coli infection, Pathways in cancer, Prostate cancer, Thyroid cancer, Tight junction, Wnt signaling pathway
Gene Summary:	<p>The protein encoded by this gene is part of a complex of proteins that constitute adherens junctions (AJs). AJs are necessary for the creation and maintenance of epithelial cell layers by regulating cell growth and adhesion between cells. The encoded protein also anchors the actin cytoskeleton and may be responsible for transmitting the contact inhibition signal that causes cells to stop dividing once the epithelial sheet is complete. Finally, this protein binds to the product of the APC gene, which is mutated in adenomatous polyposis of the colon. Mutations in this gene are a cause of colorectal cancer (CRC), pilomatixoma (PTR), medulloblastoma (MDB), and ovarian cancer. Alternative splicing results in multiple transcript variants. [provided by RefSeq, Aug 2016]</p>