

## Product datasheet for **RG214549**

### WDR62 (NM\_173636) Human Tagged ORF Clone

#### Product data:

Product Type:	Expression Plasmids
Product Name:	WDR62 (NM_173636) Human Tagged ORF Clone
Tag:	TurboGFP
Symbol:	WDR62
Synonyms:	C19orf14; MCPH2
Mammalian Cell Selection:	Neomycin
Vector:	pCMV6-AC-GFP (PS100010)
E. coli Selection:	Ampicillin (100 ug/mL)
ORF Nucleotide Sequence:	>RG214549 representing NM_173636 Red=Cloning site Blue=ORF Green=Tags(s)

TTTTGTAATACGACTCACTATAGGGCGGCCGGAATTCGTCGACTGGATCCGGTACCGAGGAGATCTGCC  
GCC**CGATCGCC**

ATGGCGGCCGTAGGGTCCGGAGGCTATGCGCGAACGATGCAGGGGAGAAGCTGCCCTCTGTCATGGCGG  
GAGTTCGGCGCGGAGGGGCCAGTCTCCCGCCCCCGCCCAACATCTGCCTACGGCGCGGACCGG  
ACTCTCGACGGCCTCCGAGGAGACGGTGCAGAACCGGGTGTCACTCGAGAAGGTGCTTGGCATCACAGCC  
CAGAACAGCAGTGGCCTAACCTGTGACCCCGGCACAGGCCATGTGGCCTACCTGGCAGGCTGTGTGGTGG  
TGATTTTGGACCCCAAGGAGAACAAGCAGCAGCACATCTTAAACACCGCCAGGAAGTCTCTCAGTGTCT  
GGCCTTCTCCCTGATGGGAAGTACATAGTGACAGGGGAGAATGGGCATAGGCCTGCTGTGCGCATCTGG  
GATGTGGAGGAGAAGAATCAGGTGGCGGAGATGCTAGGCCACAAGTATGGTGTGGCGTGTGTGGCCTTCT  
CACCCAATATGAAGCACATCGTGTCCATGGGCTACCAACATGACATGGTGTCAACGTCTGGGACTGGAA  
GAAAGACATCGTAGTGGCCTCCAACAAGGTATCTTGTAGAGTCATTGCCCTCTCCTTCTCAGAGGACAGC  
AGCTATTTTGTCACTGTTGGGAACCGCCATGTGAGGTTCTGGTCTTGGAAAGTCTCCACTGAGACAAAGG  
TGACGAGCACAGTGGCCCTTGTAGGGCGCTCGGGCATCCTGGCGAGCTGCACAACAACATCTTCTGTGG  
TGTGGCCTGCGGTCCGGGCGGATGGCGGCAGTACCTTCTGTGTCTACTCGGGCCTCCTCTGCCAG  
TTCAATGAGAAGAGGGTCTGGAGAAGTGGATCAACCTGAAGTCTCCCTGTCTTCCCTCTGTGTCA  
GCCAGGAGCTCATCTTCTGTGGCTGCACAGATGGGATAGTCCGCATCTTCCAGGCCCATAGCCTGCACTA  
CCTCGCCAACCTGCCAAGCCACACTACCTTGGGGTAGACGTGGCACAGGGCCTGGAGCCAGCTTCCCTC  
TTCCACAGGAAGGCGGAAGCAGTCTACCCAGATACAGTGGCACTGACCTTCGACCCCATCCACCAGTGGC  
TGTCTGCGTGTATAAGGACCACAGCATCTACATCTGGGATGTCAAGGACATCAACAGAGTGGGCAAGGT  
GTGGTCAGAGCTTCCACAGCTCTACGTTTGGAACGTGGAGGTGTATCCTGAGTTTGAAGACCAGAGA  
GCTTGTGGCCATCAGGATCCTTCTGACTTGTCTTTCAGACAACACCATTTCGCTTCTGGAACCTGGACA  
GCAGCCCTGATTCTCACTGGCAGAAAAACATCTCAGCAATACCCTGCTGAAGGTCGTGTACGTGGAGAA  
TGACATCCAGCACCTGCAGGACATGTCACACTTCCAGACCGGGGAGCGAGAATGGGACCCCATGGAC



[View online >](#)

GTGAAAGCCGGGGTTCGGGTCATGCAGGTCAGTCTGACGGCCAGCATTGGCTTCAGGCGACCGAAGTG  
GAAATCTGAGGATCCACGAGCTGCATTCATGGACGAGCTGGTCAAGGTGGAGGCCCATGATGCTGAGGT  
GCTGTGCTGGAGTACTCCAAGCCAGAGACGGGGTGCACCTTGTGGCCTCAGCCAGTCGGGACCGGCTG  
ATCCATGTGCTGAACGTGGAGAAGAACTACAACCTGGAGCAGACGCTGGATGACCACTCCTCCTCATCA  
CCGCCATCAAGTTCGCTGGCAACAGAGACATCCAGATGATCAGCTGTGGGGTACAAGAGCATCTACTT  
TCGCAGTGGCCAGCAGGGTTCCGATGGACTACACTTTGTCGTAACCCACACGTAAGCAGAAAACCACC  
TTGTATGACATGGACATTGACATCACCCAGAAGTACGTGGCCGTGGCCTGCCAGGACCGCAATGTGAGAG  
TCTACAACACTGTGAACGGGAAGCAGAAGAAGTCTACAAGGGCTCCAGGGTGACGAAGGGTCTTGTCT  
GAAGGTCCATGTGGACCCCTCAGGCACCTTCTGGCCACCAGCTGCTCTGACAAAAGCATCTCAGTGATT  
GACTTTTACTCGGGCAGTGCATTGCCAAGATGTTTGGCCATTGACAAAATTATTACCAGCATGAAGTTCA  
CCTATGACTGTCATCACTTGATCACAGTATCTGGAGACAGCTGCGTGTTTCTGTCACCTGGGCCCGGA  
GATCACCACCTGCATGAAGCAGCACTTGTGGAGATTGACCACCGGCAGCAGCAGCAGCACAAAATGAC  
AAGAAGCGGAGTGGCCACCCAGGCAGGATACGTATGTGTCCACACCTAGTGAGATTCACTCCTGAGCC  
CTGGAGAGCAAACAGAGGATGATCTGGAGGAAGAGTGTGAGCCAGAAGAGATGCTGAAGACACCATCAA  
AGATAGCTTGGATCCAGATCCTCGTTGCCTGCTAACCAACGGCAAGCTGCCACTGTGGGCAAAGCGGCTG  
CTAGGGGACGATGATGTGGCAGATGGCTTGGCCTTCCACGCCAAGCGCAGCTACCAAGCCACGGCCGCT  
GGGCAGAGCGGGCCGGCAAGAGCCCTCAAGACCATCCTGGATGCCAGGACCTGGATTGCTACTTTAC  
CCCCATGAAGCCCGAGAGTCTGGAGAACTCCATTTCTGGATTCACTGGAGCCACAGAGCCTGGCCAGCCTG  
CTGAGTGAGTCAGAGAGTCCCCAGGAAGCTGGCCGCGGGCACCCCTCCTTCTGCCCCAGCAGAAGGAAT  
CATCTGAGGCCAGTGAGTCACTCTACTCTCTGGAGGCAGAAGTGACAGTACAGGGCAGACAGCCAA  
GTATTGCAGGAAGGAGGTGGAGGCCGGGCTGGAGACCAGCAGGGCGACTCCTACCTCAGGGTGTCTCC  
GACAGCCCAAAGGACCAGAGCCCGCTGAGGACTCGGGGAGTCAGAGGCCGACCTGGAGTGCAGCTTCG  
CAGCCATCCACTCCAGCTCCGCTCCTGACCCTGCCCTCGTTTGGCACGTCGCTGCCCATTTCCC  
AGGATGCGCAGGTCCACAGAAGATGAGCTGTCCCTGCCGAGGGACCCAGCGTCCCCAGCAGCTCCCTA  
CCCCAGACTCCGAGCAGGAGAAGTTTCTCCGCCACCACTTTGAGACACTGACTGAGTCCCCTGCAGAG  
CTCTGGGAGACGTGGAGGCTCTGAAGCTGAAGACCCTTCTTCAACCCACGCCTGAGTATCTCCACGCA  
GTTCTCTCAAGCCTCCAGAAGGCATCCAGTTACCCATACCTTCCCTCCCCGGGCAACCCAGTGCCTT  
GTGAAGTCTCCAGAGGTCAAGCTCATGGACCGAGGCGGAAGCCAGCCAGAGCAGGTACTGGCTACGCT  
CCCCAGACAGGACCCACGTCCTCGCTGCAGGGAAGGCTGAAGAGACCCTGGAGGCTGGCGCCACCACC  
TCCCTGCCTTACGAGCCTGGCGTCTGTGTCCCTGCTTCCCTCCGTGCTGCCACAGACAGGAATCTCCCA  
ACGCCACATCTGCACCCACCCAGGCTGGCTCAGGGTGTCCATGCCCCCTCCACTGTCTCTACATGG  
AGGCCACTGCCAGCTCCCGTCCAGGATATCACGCAGCATCTCCCTCGGTGACAGTGAGGGCCCTATCGT  
GGCCACACTGGCCAGCCCTCCGTAGGCCATCGTCCGTTGGGGAGCTGGCCTCCTTGGGCCAGGAGCTT  
CAGGCCATCACACCAGCACAACACCCAGTTTGGACAGTGAGGGCCAAGAGCCTGCCCTGCGTTCCTGGG  
GCAACCACGAGGCCCGGGCAACCTGAGACTGACCCTGTCAAGTGCCTGTGATGGGCTCCTGCAGCCCC  
CGTGGATACCCAGCCTGGCGTCAACGTCCTGCAGTGAGCTTCCAGCCCTAGCCCTGTGGAAGAGAGC  
GCCCTGAGGCTCCACGGCTTGCCTTTCGCCAAGTCTCCAGCTCCTGAGTCCCCTGGCCTTCTGCCC  
ACCCAGTAACCCAGCTTCCAGAGCCCGGCTGGCATCCTGGCGGCACTGCCTCCTCCTGGAGCC  
CACCTCCGGTGCATTTGGTCTGTTACAGGGCAGCCCTGCCGCTGGAGTGAGCCCTGGTGCCGGTTGAA  
GCCCTGCCCCATCTCCCTTGAAGTGAAGCAGGGTGGGGAACATCTTGACAGGCTGCAGACCACCTTCC  
AAGAAGCCCTCGACCTTACCGTGTGTTGGTCTCCAGTGCCAGGTGGACACCGGCAGCAGCAGGCACG  
GACTGAGCTGGTCTCCACCTTCTGTGGATCCACAGCCAGCTGGAGGCTGAATGCCTGGTGGGACTAGT  
GTGGCCCCAGCCAGGCTCTGCCAGCCAGGACCCCGTCCCCACCGACGCTGTACCCCTGGCCAGCC  
CAGACTGCAGGCCCTGCTGGAACACTACTCGGAGCTGCTGGTGCAGGCCGTGGGAGGAAGGCACGGG  
GCAC

ACGCGTACGCGGCCGCTCGAG - GFP Tag - GTTTAA

**Protein Sequence:** >RG214549 representing NM\_173636  
 Red=Cloning site Green=Tags(s)

```

MAAVGSGGYARNDAGEKLPVSMAGVPARRGQSSPPPAPPICLRRRTRLSTASEETVQNRVLSLEKVLGITA
QNSSGLTCDPGTGHVAYLAGCVVILDPKENKQHQHIFNTARKSLSALAFSPDGKYIVTGENGHRPAVRIW
DVEEKNVAEMLGHKYGVACVAFSPNMKHIVSMGYQHDMVLNVWDWKKDIVVASNKVSCRVIASFSEDS
SYFVTVGNRHRVRFWFLEVSTETKVTSTVPLVGRSGILGELHNNIFCGVACGRGRMAGSTFCVSYSGLLCQ
FNEKRVLEKWINLKVLSLSSCLCVSQELIFCGCTDGIIVRIFQAHSLSHYLANLPKPHYLGVDVAQGLEPSFL
FHRKAEAVYPDTVALTFDPIHQWLSCVYKDHSIYIWDVKDINRVGKVVSELFHSSYVWVVEVYPEFDQR
ACLPSSGFLTCSSDNTIRFWNLDSPPDSHWQKNIFSNLLKVVYVENDIQHLQDMSHFDRGSENGTPMD
VKAGVRVMQVSPDGHLASGDRSGNLRHHELFMDELVKVEAHDAEVLCEYSKPETGLTLLASASRDRL
IHLVNEKYNLEQLDDHSSSITAIKFAGNRDIQMI SCGADKSIYFRSAQQGSDGLHFVTRHHVAEKT
LYDMDIDITQKYAVACQDRNVRVYNTVNGKQKCYKGSQDEGSLLKVHVDPSTGFLATSCSDKISVI
DFYSGECIAKMFHSEIITSMKFTYDCHHLITVSGDSCVF IWHLGPEITNCMKQHLL EIDHRQQQHTND
KKRSGHPRQDTYVSTPSEIHSLSPEQE TEDDLEEECEPEEMLKTPSKDSLDPDRCLLTNGKLPWAKRL
LGDDDVA DGLAFHAKRSYQPHGRWAERAGQEPLKTILDAQDLDCYFTPMKPE SLENSILDSLEPQSLASL
LSESESPQEAGRHPSPFLPQQKESSEASELILYSLEAEVTVTGTD SQYCRKEVEAGPGDQQGSYL RVSS
DSPKDQSPPEDSGESEADLECSFAAIHSPAPPPDPAPRFATSLPHFPGCAGTEDELSLEPGSPVSSSL
PQTPEQEKF LRHHFETL TESPICALGDVEASEADHFFNPRLSISTQFLSSLQKASRFTHTFPRATQCL
VKSPVKLMDRGGSQPRAGTGYASPRDRTHVLAAGKAEETLEAWRPPPPCLTSLASCVPASSVLPDRNLP
TPTSAPTPLA QGVHAPSTCSYMEATASSRARI SRSISLGDSEGP I VATLAQPLRRPSSV GELASLQEL
QAITTATPSLDSEGQEPALRSWGNHEARANLRLTLSSACDGLLQPPVDTQPGVT VPAVSFPAPSPVEES
ALRLHGSFAFRPSLPAPE SPGLPAHPSNPQLPEARPGIPGGTASLLEPTSGALGLLQGSPARWSEPWWPVE
ALPPSPLEL SRVGNILHRLQTTFQEALDLRYRLVSSGQVDTGQQQARTEL VSTFLWIHSQLEAECLVGT
VAPAQALPSPGPPSPPTLYPLASPDLYRLEHYSELLVQAVRRKARGH
    
```

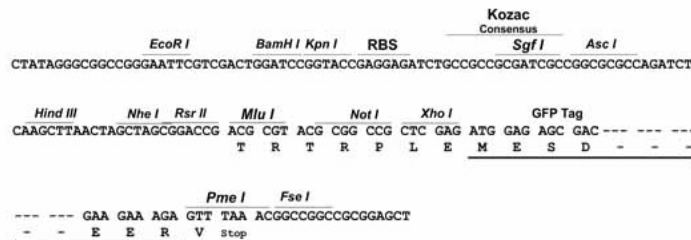
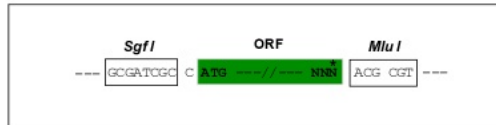
TRTRPLE - GFP Tag - V

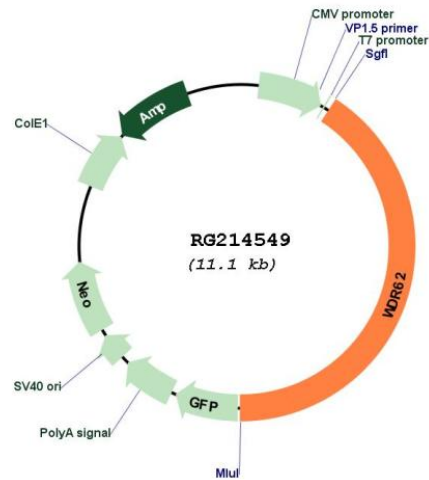
**Restriction Sites:**

SgfI-MluI

**Cloning Scheme:**

Cloning sites used for ORF Shutting:



**Plasmid Map:**


**ACCN:** NM\_173636

**ORF Size:** 4554 bp

**OTI Disclaimer:** The molecular sequence of this clone aligns with the gene accession number as a point of reference only. However, individual transcript sequences of the same gene can differ through naturally occurring variations (e.g. polymorphisms), each with its own valid existence. This clone is substantially in agreement with the reference, but a complete review of all prevailing variants is recommended prior to use. [More info](#)

**OTI Annotation:** This clone was engineered to express the complete ORF with an expression tag. Expression varies depending on the nature of the gene.

**Components:** The ORF clone is ion-exchange column purified and shipped in a 2D barcoded Matrix tube containing 10ug of transfection-ready, dried plasmid DNA (reconstitute with 100 ul of water).

**Reconstitution Method:**

1. Centrifuge at 5,000xg for 5min.
2. Carefully open the tube and add 100ul of sterile water to dissolve the DNA.
3. Close the tube and incubate for 10 minutes at room temperature.
4. Briefly vortex the tube and then do a quick spin (less than 5000xg) to concentrate the liquid at the bottom.
5. Store the suspended plasmid at -20°C. The DNA is stable for at least one year from date of shipping when stored at -20°C.

**RefSeq:** [NM\\_173636.5](#)

**RefSeq Size:** 4731 bp

**RefSeq ORF:** 4557 bp

**Locus ID:** 284403

**UniProt ID:** [O43379](#)

**Cytogenetics:** 19q13.12

**Gene Summary:** This gene is proposed to play a role in cerebral cortical development. Mutations in this gene have been associated with microencephaly, cortical malformations, and cognitive disability. Alternative splicing results in multiple transcript variants. [provided by RefSeq, Jan 2011]