

Product datasheet for **RG214535**

PDE5A (NM_001083) Human Tagged ORF Clone

Product data:

Product Type:	Expression Plasmids
Product Name:	PDE5A (NM_001083) Human Tagged ORF Clone
Tag:	TurboGFP
Symbol:	PDE5A
Synonyms:	CGB-PDE; CN5A; PDE5
Mammalian Cell Selection:	Neomycin
Vector:	pCMV6-AC-GFP (PS100010)
E. coli Selection:	Ampicillin (100 ug/mL)



[View online »](#)

ORF Nucleotide Sequence:

>RG214535 representing NM_001083
 Red=Cloning site Blue=ORF Green=Tags(s)

TTTTGTAATACGACTCACTATAGGGCGGCCGGGAATTCGTGACTGGATCCGGTACCGAGGAGATCTGCC
 GCC**CGGATCGCC**

ATGGAGCGGGCCGCCAGCTTCGGGCAGCAGCGACAGCAGCAGCAGCCAGCAGCAGAAAGCAGCAGC
 AGAGGGATCAGGACTCGGTCGAAGCATGGCTGGACGATCACTGGGACTTTACCTTCTCACTTTGTTAG
 AAAAGCCACCAGAGAAATGGTCAATGCATGGTTTCTGAGAGAGTTACACCACCTCTGTGTCAAGGAA
 GGTATCAGAGGCCACACCGAATCTTGTCTTGTCCCTGCAGCAGAGTCTCGTGCAGATAACAGTGCCC
 CTGGAACACCAACCAGGAAAATCTCTGCCTCTGAATTTGACCGCCTCTTAGACCCATTGTTGTCAAGGA
 TTCTGAGGAACTGTGAGCTTCTCTGACTCAGAAAAGAAGGAACAGATGCCTCTAACCCCTCCAAGG
 TTTGATCATGATGAAGGGGACCAGTGCTCAAGACTCTTGAATTAGTGAAGGATATTTCTAGTCATTTGG
 ATGTCACAGCCTTATGTCACAAAATTTCTTGCATATCCATGGACTGATATCTGCTGACCGCTATCCCT
 GTTCTTGTCTGTGAAGCAGCTCCAATGACAAGTTTCTTATCAGCCGCCTCTTTGATGTTGCTGAAGGT
 TCAACTGGAAGAAGTTTCAAATAACTGTATCCGCTTAGAATGGAACAAAGGCATTGTGGGACATGTGG
 CAGCGCTTGGTGAGCCCTTGAACATCAAAGATGCATATGAGGATCCTCGGTTCAATGCAGAAGTTGACCA
 AATTACAGGCTACAAGACACAAAGCATTCTTTGTATGCCAATTAAGAATCATAGGGAAGAGGTTGTTGGT
 GTAGCCCAGGCCATCAACAAGAAATCAGGAAACGGTGGGACATTTACTGAAAAGATGAAAAGGACTTTG
 CTGCTTATTTGGCATTGTTGGTATTGTTCTTCAATGCTCAGCTCTATGAGACTTCACTGCTGGAGAA
 CAAGAGAAATCAGGTGCTGCTTGACCTTGTAGTTAATTTTGAAGAACAACAATCATTAGAAGTAATT
 TTGAAGAAAATAGCTGCCACTATTATCTCTTTCATGCAAGTGCAGAAATGCACCAATTTTCATAGTGATG
 AAGATTGCTCCGATTCTTTTCTAGTGTGTTTACATGGAGTGTGAGGAATTAGAAAAATCATCTGATAC
 ATTAACAAGGGAACATGATGCAAAACAAAATCAATTACATGTATGCTCAGTATGTCAAAAAACTATGGAA
 CCATTAATATCCAGATGTCAGTAAGGATAAAAAGATTTCCCTGGACAACGAAAATACAGGAAATGTAA
 ACCAGCAGTGCATTAGAAGTTTGTCTTGTACACCTATAAAAAATGGAAAGAAGAATAAAGTTATAGGGGT
 TTGCCAATTGTTAATAAGATGGAGGAGAATACTGGCAAGGTTAAGCCTTTCAACCGAAATGACGAACAG
 TTTCTGGAAGCTTTTGCATCTTTTGGCTTGGGGATCCAGAACACGCAGATGTATGAAGCAGTGGAGA
 GAGCCATGGCCAAGCAAATGGTACATTGGAGTTCTGTCGTATCATGCTTCAGCAGCAGAGGAAGAAAC
 AAGAGAGCTACAGTCGTTAGCGGCTGCTGTGGTCCATCTGCCAGACCCTTAAAATTACTGACTTTAGC
 TTCAGTACTTTGAGCTGTCTGATCTGGAACAGCACTGTGTACAATTCGGATGTTTACTGACCTCAACC
 TTGTGCAGAACTCCAGATGAAACATGAGGTTCTTGCAGATGGATTTTAAAGGTTAAGAAGAATTATCG
 GAAGAATGTTGCCTATCATAAATGGAGACATGCCTTAAATACAGCTCAGTGCATGTTTGTGCTCTAAAA
 GCAGGCAAAATTCAGAACAAGCTGACTGACCTGGAGATACTTGCATTGCTGATTGCTGACTAAGCCACG
 ATTTGGATCACCGTGGTGTGAATAACTCTTACATACAGCGAAGTGAACATCCACTTGCCAGCTTTACTG
 CCATTCATCATGGAACACCATCATTTTACCAGTGCCTGATGATTCTTAATAGTCCAGGCAATCAGATT
 CTCAGTGGCCTCTCCATTGAAGAATAAAGACCACGTTGAAAATAATCAAGCAAGCTATTTAGCTACAG
 ACCTAGCACTGTACATTAAGAGGCGAGGAGAATTTTTGAACTTATAAGAAAAAATCAATCAATTTGGA
 AGATCCTCATCAAAAGGAGTTGTTTTTGGCAATGCTGATGACAGCTTGTGATCTTTCTGCAATTACAAA
 CCCTGGCCTATTCAACAACGGATAGCAGAACTGTAGCAACTGAATTTTTTATCAAGGAGACAGAGAGA
 GAAAAGAACTCAACATAGAACCCTGATCTAATGAACAGGGAGAAGAAAAACAAAATCCCAAGTATGCA
 AGTTGGGTTTATAGATGCCATCTGCTTGAACGTATGAGGCCCTGACCCACGTGTGAGGAGACTGTTTC
 CCTTGTAGATGGCTGCAGAAAGAACAGGCAGAAATGGCAGGCCCTTGCAGAACAGCAGGAGAAGATGC
 TGATTAATGGGAAAGCGCCAGGCCAAGCGGAAC

ACGCGTACGCGGCCGCTCGAG - GFP Tag - **GTTTAA**

Protein Sequence: >RG214535 representing NM_001083
 Red=Cloning site Green=Tags(s)

```
MERAGPSFGQQRQQQPQQKQQQRDQDSVEAWLDDHWDFTFSYFVRKATREMVNAWFAERVHTIPVCKE
GIRGHTESSCPLQQSPRADNSAPGTPTRKISASEFDRPLRPVVKDEGTVSFLSDSEKKEQMPLTPPR
FDHDEGDQCSRLLELVKDISSHLDVYALCHKIFLHIHGLISADRYSLFLVCESSNDKFLISRLFDVAEG
STLEEVSNNCIRLEWNGIVGHVAALGEPLNIKDAYEDPRFNAEVDQITGYKTQSILCMPKIKNHREEVVG
VAQAINKKSGNGGTFTEKDEKFAAYLAFCGIVLHNAQLYETSLENKRQVLLDLASLIFEEQQSLEVI
LKKIAAATIIISFMQVQKCTIFIVDEDCSDSFSVFHMECEELEKSSDTLTREHDANKINYMYAQYVKNTE
PLNIPDVSKDKRFPWTTENTGNVNQQCIRSLCTPIKNGKKNKVI GVCQLVKNMEENTGKVKPFNRNDEQ
FLEAFVIFCGLGIQNTQMYEAVERAMAKQMTLEVL SYHASAAEEETRELQSLAAAVVPSAQT LKITDFS
FSDFELSDLETALCTIRMFTDLNLVQNFQMKHEVL CRWILSVKKNYRKNVAYHNWRHAFNTAQCMFAALK
AGKIQNKLTDLEILALLIAALSHDLDRGVNNSYIQRSEHPLAQLYCHSIMEHHHFQDQCLMILNSPGNQI
LSGLSIEEYKTKLKI I KQAILATDLALYIKRRGEFFELIRKNQFNLEDPHQKELFLAMLMTACDLSAITK
PWPIQQRIAELVATEFFDQGDREKELNIEPTDLMNREKKNKIPSMQVGFIDAICLQLYEALTHVSEDCF
PLLDGCRKNRQKWQALAEQQEKMLINGESGQAKRN
```

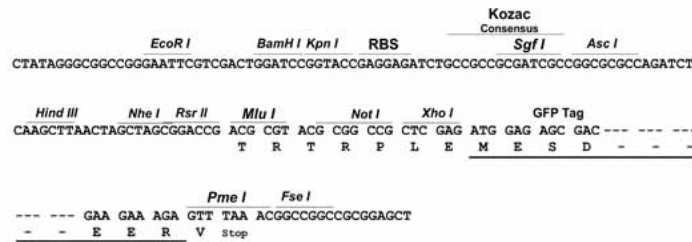
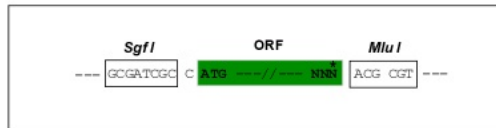
TRTRPLE - GFP Tag - V

Restriction Sites:

Sgfl-MluI

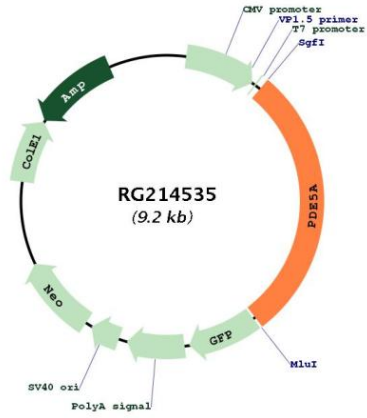
Cloning Scheme:

Cloning sites used for ORF Shuttling:



ACCN:	NM_001083
ORF Size:	2625 bp
OTI Disclaimer:	The molecular sequence of this clone aligns with the gene accession number as a point of reference only. However, individual transcript sequences of the same gene can differ through naturally occurring variations (e.g. polymorphisms), each with its own valid existence. This clone is substantially in agreement with the reference, but a complete review of all prevailing variants is recommended prior to use. More info
OTI Annotation:	This clone was engineered to express the complete ORF with an expression tag. Expression varies depending on the nature of the gene.
Components:	The ORF clone is ion-exchange column purified and shipped in a 2D barcoded Matrix tube containing 10ug of transfection-ready, dried plasmid DNA (reconstitute with 100 ul of water).
Reconstitution Method:	<ol style="list-style-type: none">1. Centrifuge at 5,000xg for 5min.2. Carefully open the tube and add 100ul of sterile water to dissolve the DNA.3. Close the tube and incubate for 10 minutes at room temperature.4. Briefly vortex the tube and then do a quick spin (less than 5000xg) to concentrate the liquid at the bottom.5. Store the suspended plasmid at -20°C. The DNA is stable for at least one year from date of shipping when stored at -20°C.
RefSeq:	NM_001083.4
RefSeq Size:	7005 bp
RefSeq ORF:	2628 bp
Locus ID:	8654
UniProt ID:	O76074
Cytogenetics:	4q26
Domains:	PDEase, GAF, HDc
Protein Families:	Druggable Genome
Protein Pathways:	Progesterone-mediated oocyte maturation, Purine metabolism
Gene Summary:	This gene encodes a cGMP-binding, cGMP-specific phosphodiesterase, a member of the cyclic nucleotide phosphodiesterase family. This phosphodiesterase specifically hydrolyzes cGMP to 5'-GMP. It is involved in the regulation of intracellular concentrations of cyclic nucleotides and is important for smooth muscle relaxation in the cardiovascular system. Alternative splicing of this gene results in three transcript variants encoding distinct isoforms. [provided by RefSeq, Jul 2008]

Product images:



Circular map for RG214535