

Product datasheet for **RG214507**

RTEL1 (NM_016434) Human Tagged ORF Clone

Product data:

Product Type:	Expression Plasmids
Product Name:	RTEL1 (NM_016434) Human Tagged ORF Clone
Tag:	TurboGFP
Symbol:	RTEL1
Synonyms:	C20orf41; DKCA4; DKCB5; NHL; PFBMFT3; RTEL
Mammalian Cell Selection:	Neomycin
Vector:	pCMV6-AC-GFP (PS100010)
E. coli Selection:	Ampicillin (100 ug/mL)
ORF Nucleotide Sequence:	>RG214507 representing NM_016434 Red=Cloning site Blue=ORF Green=Tags(s)

TTTTGTAATACGACTCACTATAGGGCGGCCGGAATTCGTCGACTGGATCCGGTACCGAGGAGATCTGCC
GCC**CGATCGCC**

ATGCCAAGATAGTCCTGAATGGTGTGACCGTAGACTTCCCTTTCCAGCCCTACAAATGCCAACAGGAGT
ACATGACCAAGGTCCTGGAATGTCTGCAGCAGAAGGTGAATGGCATCCTGGAGAGCCCTACGGGTACAGG
GAAGACGCTGTGCCTGCTGTGCACCACGCTGGCCTGGCGAGAACACCTCCGAGACGGCATCTCTGCCCGC
AAGATTGCCGAGAGGGCGCAAGGAGAGCTTTCCCGGATCGGGCCTTGTATCCTGGGGCAACGCTGCTG
CTGCTGTGGAGACCCCATAGCTTGTACACGGACATCCCAAAGATTATTTACGCCTCCAGGACCCACTC
GCAACTCACACAGGTCATCAACGAGCTTCGGAACACCTCCTACCGGCCTAAGGTGTGTGTCTGGGCTCC
CGGGAGCAGCTGTGCATCCATCCTGAGGTGAAGAAACAAGAGAGTAACCATCTACAGATCCACTTGTGCC
GTAAGAAGGTGGCAAGTCGCTCCTGTCAATTTCTACAACAACGTAGAAGAAAAAGCCTGGAGCAGGAGCT
GGCCAGCCCCATCCTGGACATTGAGGACTTGGTCAAGAGCGGAAGCAAGCACAGGAGTGTGCCCTTACTAC
CTGTCCCGGAACCTGAAGCAGCAAGCCGACATCATTTGATGCGGTACAATTACTTGTGGATGCCAAGA
GCCGACAGACACACAACATTGACCTGAAGGGGACAGTCGTGATCTTTGACGAAGCTCACACGTGGAGAA
GATGTGTGAAGAATCGGCATCCTTTGACCTGACTCCCCATGACCTGGCTTCAGGACTGGACGTCATAGAC
CAGGTGCTGGAGGAGCAGACCAAGGCAGCGCAGGAGGAGCCCAAGGAGTTCAGCGGGACTCCC
CCAGCCCAGGGCTGAACATGGAGCTGGAAGACATTGCAAAGCTGAAGATGATCCTGCTGCGCCTGGAGGG
GGCCATCGATGCTGTTGAGCTGCCTGGAGACGACAGCGGTGTACCAAGCCAGGGAGCTACATCTTTGAG
CTGTTTGTGAAGCCAGATCACGTTTACAGACCAAGGGCTGCATCCTGGACTCGCTGGACCAGATCATCC
AGCACCTGGCAGGACGTGCTGGAGTGTTCACCAACACGGCCGACTGCAGAAGCTGGCGGACATTATCCA
GATTGTGTTTCAAGTGTGGACCCCTCCGAGGGCAGCCCTGTTTCCCAGCAGGGCTGGGGCCCTTACAGTCC
TATAAGGTGCACATCCATCCTGATGCTGGTCACCGGAGGACGGCTCAGCGGTCTGATGCCTGGAGCACCA
CTGCAGCCAGAAAGCGAGGGAAGGTGCTGAGCTACTGGTCTTCACTCCCGGCCACAGCATGCACGAGCT
GGTCCGCCAGGGCTCCGCTCCCTCATCTTACCAGCGGCAGCTGGCCCGGTGTCTCTTTGCTCTG



[View online »](#)

GAGATGCAGATCCCTTTCCAGTCTGCCTGGAGAACCACACATCATCGACAAGCACCAGATCTGGGTGG
GGTCTGTCAGAGGCCCGATGGAGCCAGTTGAGCTCCGCGTTTGACAGACGGTTTTCCGAGGAGTG
CTTATCCTCCCTGGGAAGGCTCTGGGCAACATCGCCCGGTGGTGCCTATGGGCTCCTGATCTTCTT
CCTTCTATCCTGTATGGAGAAGACCTGGAGTTCTGGCGGGCCGCGACTTGGCCAGGAAGATGGAGG
CGCTGAAGCCGCTGTTTGTGGAGCCAGGAGCAAAGGCAGCTTCTCCGAGACCATCAGTGCTTACTATGC
AAGGGTTGCCGCCCTGGGTCCACCGGCCACCTTCTGGCGGTCTGCCGGGCAAGGCCAGCGAGGGG
CTGGACTTCTCAGACACGAATGGCCGTGGTGTGATTGTACGGGCCTCCGTACCCCCACGCATGGACC
CCCGGGTTGTCTCAAGATGCAGTTCTGGATGAGATGAAGGGCCAGGGTGGGGCTGGGGGCCAGTTCT
CTCTGGGCAGGAGTGGTACCGGCAGCAGCGTCCAGGGCTGTGAACCAGGCCATCGGGCAGTGATCCGG
CACCGCCAGGACTACGGAGCTGTCTTCTCTGTGACCACAGGTTCCGCTTTGCCGACGAAGAGCCCAAC
TGCCCTCCTGGGTGCGTCCACAGTCAGGGTGTATGACAACTTTGGCCATGTCATCCGAGACGTGGCCCA
GTTCTTCCGTGTTGCCGAGCGAACTATGCCAGCGCCGCCCCCGGGCTACAGCACCCAGTGTGCGTGGA
GAAGATGTGTCAGCGAGGCCAAGTCGCTGGCCCTTCTTCCACCAGGAAAGCTAAGAGTCTGGACC
TGCATGTCCCAGCCTGAAGCAGAGTCTCAGGGTACCAGCTGCCGGGACCCCGAGAGTAGCCTGTG
TGTGGAGTATGAGCAGGAGCCAGTTCTGCCCGCAGAGGCCAGGGGGTCTGGCCGCCCTGGAGCAC
AGCGAACAGCGGGCGGGAGCCCTGGCGAGGAGCAGGCCACAGCTGCTCCACCTGTCCCTCCTGTCTG
AGAAGAGGCCGGCAGAAGAACCAGGAGGAGGAGGAAGAAGATCCGGCTGGTCCAGCCACCCGGAGGAGCC
CGTGGCTGGTGCACAGACGGACAGGGCCAAAGCTTTCATGGTGGCCGTGAAGCAGGAGTTGAGCCAAAGC
AACTTTGCCACCTTACCCAGGCCCTGCAGGACTACAAGGGTTCCGATGACTTCCGCCCTGGCCGCCCT
GTCTCGGCCCCCTCTTGTCTGAGGACCCCAAGAAGCACAACTGCTCCAAGGCTTCTACCAGTTTGTGCG
GCCCCACCATAAGCAGCAGTTTGGAGAGTCTGTATCCAGCTGACAGGACGAGGCTGTGGCTATCGGCCT
GAGCACAGCATTCCCGAAGGCAGCGGGCACAGCCGCTTGGACCCACTGGAAGAACGGCGCCGGATC
CCAAGCTGACCGTGTCCACGGCTGCAGCCAGCAGCTGGACCCCAAGAGCACCTGAACCAGGGCAGGCC
CCACCTGTGCCCCAGGCCACCCCAACAGGAGACCCTGGCAGCCAACCACAGTGGGGTCTGGAGTGCCC
AGAGCAGGGAAGCAGGGCCAGCAGCCGTGAGCGCCTACCTGGCTGATGCCCGCAGGGCCCTGGGGTCCG
CGGGCTGTAGCCAACTTTGGCAGCGCTGACAGCCTATAAGCAAGACGACGACCTCGACAAGGTGCTGGC
TGTGTTGGCCGCCCTGACCCTGCAAAGCCAGAGGACTTCCCCCTGCTGCACAGGTTTCCAGTGTGTTG
CGTCCACACCACAAGCAGCGCTTCTCACAGACGTGCACAGACCTGACCGGCCGCCCTACCCGGGCATGG
AGCCACCGGGACCCAGGAGGAGAGGCTTGCCGTGCCTCCTGTGCTTACCCACAGGGCTCCCAACCAGG
CCCCTCACGGTCCGAGAAGACCGGAAGACCCAGAGCAAGATCTCGTCTTCTTAGACAGAGGCCAGCA
GGGACTGTGGGGCGGGCGGTGAGGATGCAGGTCCAGCCAGTCTCAGGACCTCCACGGCCCTGCAG
CATCTGAGTGGGCCTC

ACGCGTACGCGGCCGCTCGAG - GFP Tag - GTTTAA

Protein Sequence: >RG214507 representing NM_016434
 Red=Cloning site Green=Tags(s)

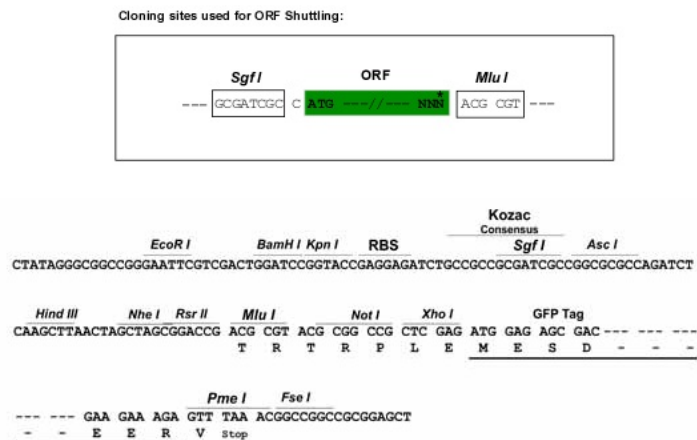
MPKIVLNGVTVDFFPQPYKQQEYMTKVL ECLQQKVN GILESPTGTGKTLCLLCTTLAWREHLR DGISAR
 KIAERAQ GELFPDRALSSWGNAAAAAGDPIACYTDIPKIIYASRTHSQLTQVINELRNTSYRPKVCVLGS
 REQLCIHPEVKKQESNHLQIHLCRKKVASRSCHFYNVVEEKSLEQELASPILDIEDLVKSGSKHRVCPYY
 LSRNLKQQADIIFMPYNYLLDAKSRRAHNIDLKGTVVIFDEAHNVEKMCEESASFDLTPHDLASGLDVID
 QVLEEQTAAAQGEHPHEFSADSPSPGLNMELEDIAKLKMILLRLEGIDA VELPGDSSGVTKPGSYIFE
 LFAEAQITFQTKGCILDSL DQIIQHLAGRAGVFTNTAGLQKLADI IQIVFSVDPSEGPSGSPAGLGALQS
 YKVIHPDAGHRRTAQRSDAWSTTAARKRGKVL SYWCFSPGHSMHELVRQGVRS LILTSGLTAPVSSFAL
 EMQIPFPVCLENPHIIDKHQIWVGVVPRGPDGAQLSSAFDRRFSEECLSSLGKALGNIARVVPYGLLIFF
 PSYPVMEKSLEFWRARDLARKMEALKPLFVEPRSKGSFSETISAYYARVAAPGSTGATFLAVCRGKASEG
 LDFSDTNGRGI V TGLPYPRMDPRVVLKMQLDEMKGQGGAGGQFLSGQEWYRQQASRAVNQAIGRVIR
 HRQDYGAVFLCDHRFAFADARAQLPSWVRPHVRVYDNFGHVIRDVAQFFRVAERTMPAPAPRATAPSVRG
 EDVASEAKSPGPFSTRKAKSLDLHVP SLKQRSSGSPAAGDPESL CVEYEQEPV PARQRPRGLLAAL EH
 SEQRAGSPGEEQAHS CSTLSLLSEKRAE EPRGGRKKIRLVSHPEEPVAGAQTDRAKLFMVAVKQELSQA
 NFATFTQALQDYKGSDDFAALAA CLGPLFAEDPKKHNLLQGFYQFVRPHHKQQFE EVC IQLTGRGCGYRP
 EHSIPRRQRAQPVLDPTGRTAPDPKLT VSTAAAQQLDPQEHLNQRPHLSRPPPTGDGPGSQPWGSGVP
 RAGKQGQHAVSAYLADARRALGSAGCSQLLAAL TAYKQDDDLKVLAVLAALTTAKPEDFP LLHRFSMFV
 RPHHKQRF SQTCTDLTGRPYPGMEPPGPQEERLAVPPVL THRAPQGPSRSEKTGKTQSKISSFLRQRPA
 GTV GAGGEDAGPSQSSGPPHGPAA SEWGL

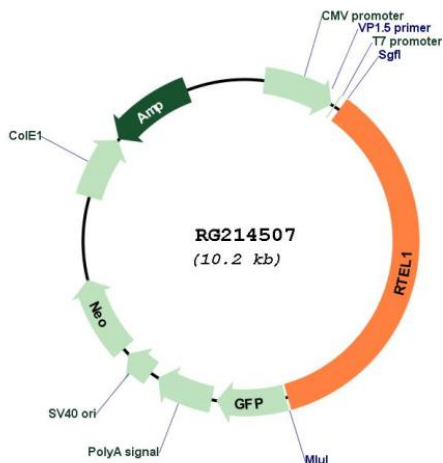
TRTRPLE - GFP Tag - V

Restriction Sites:

Sgfl-MluI

Cloning Scheme:



Plasmid Map:


ACCN: NM_016434

ORF Size: 3657 bp

OTI Disclaimer: The molecular sequence of this clone aligns with the gene accession number as a point of reference only. However, individual transcript sequences of the same gene can differ through naturally occurring variations (e.g. polymorphisms), each with its own valid existence. This clone is substantially in agreement with the reference, but a complete review of all prevailing variants is recommended prior to use. [More info](#)

OTI Annotation: This clone was engineered to express the complete ORF with an expression tag. Expression varies depending on the nature of the gene.

Components: The ORF clone is ion-exchange column purified and shipped in a 2D barcoded Matrix tube containing 10ug of transfection-ready, dried plasmid DNA (reconstitute with 100 ul of water).

Reconstitution Method:

1. Centrifuge at 5,000xg for 5min.
2. Carefully open the tube and add 100ul of sterile water to dissolve the DNA.
3. Close the tube and incubate for 10 minutes at room temperature.
4. Briefly vortex the tube and then do a quick spin (less than 5000xg) to concentrate the liquid at the bottom.
5. Store the suspended plasmid at -20°C. The DNA is stable for at least one year from date of shipping when stored at -20°C.

RefSeq: [NM_016434.4](#)

RefSeq Size: 4970 bp

RefSeq ORF: 3660 bp

Locus ID: 51750

UniProt ID: [Q9NZ71](#)

Cytogenetics: 20q13.33

Protein Families: Druggable Genome

Gene Summary: This gene encodes a DNA helicase which functions in the stability, protection and elongation of telomeres and interacts with proteins in the shelterin complex known to protect telomeres during DNA replication. Mutations in this gene have been associated with dyskeratosis congenita and Hoyerall-Hreidarsson syndrome. Read-through transcription of this gene into the neighboring downstream gene, which encodes tumor necrosis factor receptor superfamily, member 6b, generates a non-coding transcript. Alternative splicing results in multiple transcript variants encoding different isoforms. [provided by RefSeq, Sep 2013]