

Product datasheet for **RG214504**

BIN1 (NM_139345) Human Tagged ORF Clone

Product data:

Product Type:	Expression Plasmids
Product Name:	BIN1 (NM_139345) Human Tagged ORF Clone
Tag:	TurboGFP
Symbol:	BIN1
Synonyms:	AMPH2; AMPHL; CNM2; SH3P9
Mammalian Cell Selection:	Neomycin
Vector:	pCMV6-AC-GFP (PS100010)
E. coli Selection:	Ampicillin (100 ug/mL)



[View online »](#)

ORF Nucleotide Sequence:

>RG214504 representing NM_139345
 Red=Cloning site Blue=ORF Green=Tags(s)

TTTTGTAATACGACTCACTATAGGGCGGCCGGGAATTCGTGACTGGATCCGGTACCGAGGAGATCTGCC
 GCC**CGGATCGCC**

ATGGCAGAGATGGGCAGTAAAGGGGTGACGGCGGGAAGATCGCCAGCAACGTGCAGAAGAAGCTCACCC
 GCGCGCAGGAGAAGGTTCTCCAGAAGCTGGGGAAGGCAGATGAGACCAAGGATGAGCAGTTTGAGCAGTG
 CGTCCAGAATTTCAACAAGCAGCTGACGGAGGGCACCCGGCTGCAGAAGGATCTCCGGACCTACCTGGCC
 TCCGTCAAAGCCATGCACGAGGCTTCCAAGAAGCTGAATGAGTGTCTGCAGGAGGTGATGAGCCCGATT
 GGCCCGCAGGGATGAGGCAAACAAGATCGCAGAGAACAACGACCTGCTGTGGATGGATTACCACCAGAA
 GCTGGTGGACCAGGCGTGTGACCATGGACACGTACCTGGGCCAGTTCCCCGACATCAAGTCACGCATT
 GCCAAGCGGGGGCGCAAGCTGGTGGACTACGACAGTCCCGGCACCACTACGAGTCCCTTCAAAGTCCCA
 AAAAGAAGGATGAAGCCAAAATTGCCAAGCCTGTCTCGTGTGTTGAGAAAGCCGCCCCCAGTGGTGCCA
 AGGCAAATGCAGGCTCATCTCGTAGCTCAAATAACCTGCTCCGAAATCAGGCCGAGGAGGAGCTCATC
 AAAGCCAGAAGGTGTTTGAGGAGATGAATGTGGATCTGCAGGAGGAGCTGCCGTCCCTGTGGAACAGCC
 GCGTAGGTTTCTACGTCAACACGTTCCAGAGCATCGCGGGCCTGGAGGAAAACCTCCACAAGGAGATGAG
 CAAGCTCAACCAGAACCTCAATGATGTGCTGGTGGCCTGGAGAAGCAACACGGGAGCAACACCTTCACG
 GTCAAGGCCAGCCAGTGAACAACGCGCTGCAAAAGGGAACAAGAGCCCTTCGCTCCAGATGGCTCCC
 CTGCCGCCACCCCGAGATCAGAGTCAACCACGAGCCAGAGCCGGCCGGCGGGGCCACGCCCGGGGCCAC
 CCTCCCAAGTCCCATCTCAGCCACAGAGAGTCCAGCCGGCAGCCTGCCTTCCGGGAGCCACGCGT
 GCCGAGGACCTTTGCTGTGTCTGGCCAGCCAGACGGCCAGCCGGGGCCTGCCAACCAGCAGAGG
 CCTCGGAGGTGGCGGGTGGGACCAACCTGCGGCTGGAGCCAGGAGCCAGGGGAGAGCGGGCAAGTGA
 AGCAGCCTCCAGCTCTTCTGCTGCTGCTGGTGGAGACCTTCCAGCAACTGTGAATGGCACCCGTGGAG
 GGCGGAGTGGGGCCGGCGCTTGGACCTGCCCCAGTTTCATGTTCAAGGTACAGGCCACGACGACT
 ACACGGCCACTGACACAGACGAGCTGCAGCTCAAGGCTGGTGTGTGGTGTGGTGTGATCCCTTCCAGAA
 CCCTGAAGAGCAGGATGAAGGCTGGCTCATGGCGTGAAGGAGAGCGACTGGAACCAGCACAAAGGAGCTG
 GAGAAGTGCCGTGGCGTCTTCCCCGAGAACTTCACTGAGAGGGTCCCA

ACGCGTACGCGGCCGCTCGAG - GFP Tag - GTTTAA

Protein Sequence:

>RG214504 representing NM_139345
 Red=Cloning site Green=Tags(s)

MAEMGSKGVTAGKIASNVQKKLTRAQEKVLQKLGKADETKDEQFEQCVQNFNKQLTEGTRLQKDLRITYLA
 SVKAMHEASKKLNELQEVYEPDWPGRDEANKIAENNDLLWMDYHQKLVQALLTMDTYLQGFPDIKSRI
 AKRGRKLVYDYSARHHYESLQTAKKKDEAKIAKPVSLLEKAAPQWCQKLAHLVAQTNLLRNQAEELI
 KAQKVFEE MNVDLQEELPSLWNSRVGFYVNTFQSIAGLEENFHKEMSKLNQNLNDVLVGLEKQHGNTFT
 YKAQPSDNAPAKGNKSPSPDGSPAATPEIRVNHEPEPAGGATPGATLPKSPSPTEPAGSLPSGEP
 SA AEGTFVSWPSQTAEPGPAQPAEASEVAGGTQPAAGAQPGETAASEAASSSLPAVVVETFPATVNGTVE
 GGSGAGRLDLPPGFMFVKVQAQHDYATDDELQLKAGDVVLVIPFQNPPEEQDEGWLMGVKESDWNQHKEL
 EKCRGVFPENFTEVP

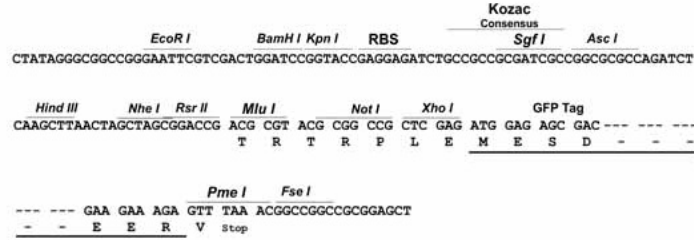
TRTRPLE - GFP Tag - V

Restriction Sites:

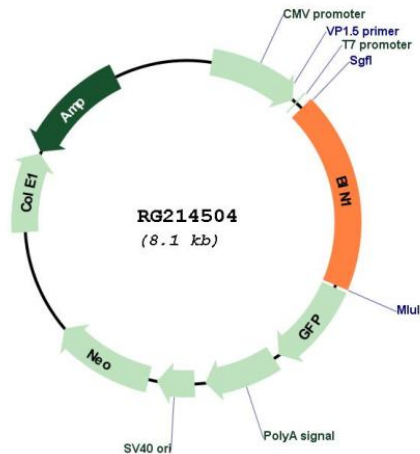
Sgfl-MluI

Cloning Scheme:

Cloning sites used for ORF Shutting:



Plasmid Map:



ACCN: NM_139345

ORF Size: 1518 bp

OTI Disclaimer: Due to the inherent nature of this plasmid, standard methods to replicate additional amounts of DNA in E. coli are highly likely to result in mutations and/or rearrangements. Therefore, OriGene does not guarantee the capability to replicate this plasmid DNA. Additional amounts of DNA can be purchased from OriGene with batch-specific, full-sequence verification at a reduced cost. Please contact our customer care team at custsupport@origene.com or by calling 301.340.3188 option 3 for pricing and delivery.

The molecular sequence of this clone aligns with the gene accession number as a point of reference only. However, individual transcript sequences of the same gene can differ through naturally occurring variations (e.g. polymorphisms), each with its own valid existence. This clone is substantially in agreement with the reference, but a complete review of all prevailing variants is recommended prior to use. [More info](#)

OTI Annotation: This clone was engineered to express the complete ORF with an expression tag. Expression varies depending on the nature of the gene.

Components: The ORF clone is ion-exchange column purified and shipped in a 2D barcoded Matrix tube containing 10ug of transfection-ready, dried plasmid DNA (reconstitute with 100 ul of water).

Reconstitution Method:

1. Centrifuge at 5,000xg for 5min.
2. Carefully open the tube and add 100ul of sterile water to dissolve the DNA.
3. Close the tube and incubate for 10 minutes at room temperature.
4. Briefly vortex the tube and then do a quick spin (less than 5000xg) to concentrate the liquid at the bottom.
5. Store the suspended plasmid at -20°C. The DNA is stable for at least one year from date of shipping when stored at -20°C.

RefSeq: [NM_139345.3](#)

RefSeq Size: 2425 bp

RefSeq ORF: 1521 bp

Locus ID: 274

UniProt ID: [O00499](#)

Cytogenetics: 2q14.3

Gene Summary: This gene encodes several isoforms of a nucleocytoplasmic adaptor protein, one of which was initially identified as a MYC-interacting protein with features of a tumor suppressor. Isoforms that are expressed in the central nervous system may be involved in synaptic vesicle endocytosis and may interact with dynamin, synaptojanin, endophilin, and clathrin. Isoforms that are expressed in muscle and ubiquitously expressed isoforms localize to the cytoplasm and nucleus and activate a caspase-independent apoptotic process. Studies in mouse suggest that this gene plays an important role in cardiac muscle development. Alternate splicing of the gene results in several transcript variants encoding different isoforms. Aberrant splice variants expressed in tumor cell lines have also been described. [provided by RefSeq, Mar 2016]