

Product datasheet for **RG214497**

TET3 (NM_144993) Human Tagged ORF Clone

Product data:

Product Type: Expression Plasmids
Product Name: TET3 (NM_144993) Human Tagged ORF Clone
Tag: TurboGFP
Symbol: TET3
Synonyms: hCG_40738
Mammalian Cell Selection: Neomycin
Vector: pCMV6-AC-GFP (PS100010)
E. coli Selection: Ampicillin (100 ug/mL)
ORF Nucleotide Sequence: >RG214497 representing NM_144993
 Red=Cloning site Blue=ORF Green=Tags(s)

TTTTGTAATACGACTCACTATAGGGCGGCCGGAATTCGTCGACTGGATCCGGTACCGAGGAGATCTGCC
 GCC**CGATCGCC**

ATGGACTCAGGGCCAGTGTACCATGGGACTCACGGCAGCTAAGCGCCTCAGGGTGCCGGTCAATGGTG
 CTAGAGAGCCCGCTGGACCCAGTCTGCTGGGACTGGGGTCTTGGCGGTAGACCAAAGCCCGACTG
 GGAGGCTGCCAGGCCAGCTCATACTGCTCGCCTGGAAGATGCCACGATCTGGTGGCCTTTTCGGCT
 GTGGCCGAAGCTGTGCTCTTATGGGGCCTTAGCACCCGGCTCTATGAAACCTCAACCGTGAGATGA
 GTCGTGAGGCTGGGAACAACAGCAGGGGACCCCGCCAGGGCCTGAGGGTGCTCTGCTGGCAGCGAAGA
 CCTTGACACACTGCAGACGGCCCTGGCCCTCGCGCGCATGGTATGAAACCACCAACTGCAACTGCGAT
 GGCCAGAAATGCCCTGACTACCTCGAGTGGCTGGAGGGGAAGATCAAGTCTGTGGTCATGGAAGGAGGGG
 AGGAGCGGCCAGGCTCCAGGGCCTCTGCCTCCTGGTGAGGCGGGCCTCCCAGCACCAAGCACCAGGCC
 ACTCCTCAGCTCAGAGGTGCCAGATCTCTCCCAAGAGGGCCTGCCCTGTCCAGAGTGCCCTGAGC
 ATTGCCAAGGAAAAAATCATCAGCTTGCAGACCGCATTGCCATTGAGGCCCTCACACAGCTCTCCTCTG
 CCCTCCCGCAGCCTTCTCATTCCACCCCGAGGCTTCTTGCCCTTCTGAGGCCTTGTCACCTCTGC
 CCCTTTGCTCCTGATAGCTCTGCCTCCCTCCAGCACTCTAGAAGTCTGAGTTCCTGAGGCCTGGGGCA
 CTGACCCCTCCAGCAACGCCCGGAGCTCCTGGCCATGCTCGCCCAAGCCCGATCCCATGGCTGA
 ACTGGAGCAGTTGTTGGCAGCGCCAGTGATTACATCCAGTCAGTATTCAAGCGCCTGAGGCCCTGCCT
 ACCAAGCCCAAGGTCAAGGTGGAGGCACCTCTTCTCCCGGCCCGGCCCATCCCCTGTACTTCAGA
 GGGAGGCTCCCACGCCATCCTCGAGCCCGACACCCAGGAGCCAGACCCCTGCAGCAGCACCT
 CCACCACAAGCGCAGCCTCTTCTAGAAGGTGCACGACACCTCCTTCCCTGCTCCTCAGAGCCTTCT
 GCTCCTGGCTGGTGGCCCCACCAAGTTACCTGTCCACGGCTTCCAGACAGACCACCAAGGAGAAGA
 AGAAGAAGCTCCCAACACCAGCTGGAGTCCCGTGGGAACGGAGAAGCTGCCCTGGGATCAAGCCAG
 TGTCGAAAGCCATTGATCAAGAAGTCCAGGCCCGGAAGCACAGCCCTCTCCACCTGTCCGA



[View online >](#)

CAGATTGCTCTGGAAGGGCTTAGGTCCCCAGCCTCCCAGGAAGTGCAGGCTCATCCACCGCCCTCTGC
 CTGCTCACAGGGCTCTGCTGTGCCCTGCCCCAGAACCTTCTCTTGCGCTATTTGACCTAGTCCCTC
 CAGGGACAGCCTGCTGCCCCCTACTCAGGAAATGAGGTCCCCAGCCCCATGACAGCCTTGACGCCAGGC
 TCCACTGGCCCTTCCCCCTGCCGATGACAAGCTGGAAGAGCTCATCCGGCAGTTTGAGGCTGAATTTG
 GAGATAGCTTTGGGCTTCCCGCCCCCTTCTGTGCCATTGAGGACCCGAGAACCAGCAAACATGTCT
 CCCAGCCCCTGAGAGCCCCTTTGCTACCCGTTCCCCAAGCAAATCAAGATTGAGTCTTCGGGGGCTGTG
 ACTGTGCTCTCAACCACCTGCTTCCATTGAGAGGGGAGGACAGGAGGCCACCCACCAAGGCTGAGA
 ACCCACTCACACCACCCTCAGTGGCTTCTGGAGTACCTCTTAAGTACCTGGACACACCACCAAGAG
 TCTGCTGGACACCTGCCAAGAGAGCCAGGCCGAGTCCCCACCTGCGATTGCGTGAACAAATAGTG
 GAGAAAGATGAAGGTCCATATTACTCACTTGGGATCTGGCCCCACGGTCGCTCTATCCGGAACTCA
 TGGAGGAGCGGTATGGAGAGAAGGGGAAAGCCATCCGGATCGAGAAGGTCTACACGGGGAAGGAGGG
 AAAGAGCTCCCGCGTGGCCCCATTGCAAAGTGGGTGATCCGCAGGCACACGCTGGAGGAGAAGCTACTC
 TGCTGGTGGCCACCGGCAGGCCACCCTGCCAGAACGCTGTGATCGTCTATCCTATCCTGGCCTGGG
 AGGGCATTCCCCGTAGCCTCGGAGACACCCTTACCAGGAGCTCACCGACACCCTCCGGAAGTATGGGAA
 CCCACCAGCCGAGATCGGCCCAACGATGACCGGACCTGCGCTTGCCAAGGCAAAGACCCCAACACC
 TGTGGTGCCTCCTTCTCCTTTGGTTGTTCTGGAGCATGACTTCAACGGCTGCAAGTATGCTCGGAGCA
 AGACACCTCGCAAGTCCGCCTCGCAGGGGACAATCCCAAAGAGGAAGAAGTGTCCGGAAGAGTTTCCA
 GGACCTGGCCACCGAAGTCGCTCCCCTGTACAAGCGACTGGCCCCCAGGCCATCAGAACCAGGTGACC
 AACGAGGAAATAGCGATTGACTGCCGTCTGGGGCTGAAGGAAGGACGGCCCTTCGCGGGGTACGGCCT
 GCATGGACTTCTGTGCCACGCCACAAGGACCAGCATAACCTCTACAATGGGTGCACCGTGGTCTGCAC
 CCTGACCAAGGAAGACAATCGCTGCGTGGGCAAGATCCCAGGATGAGCAGTGCATGTTCTCCCCCTG
 TACAAGATGGCCAACACGGATGAGTTTGGTAGCGAGGAGAACCAGAATGCAAAGTGGGACGCGGAGCCA
 TCCAGTGTCTACCGCCTTCCCCCGGAGGTCGACGCCTGCCGAGCCTGCCAAGTCTGCCCGCAGCC
 GCAGTGAAGCCAGAAAGGCGACGCCGAGAAGAAGAAGATTGAGAAGGAGAAGCTGAGCACTCCGGAG
 AAGATCAAGCAGGAGGCCCTGGAGCTGGCGGGCATTACGTGCGACCCAGGCCGTCTCTGAAGGGTGGAT
 TGTCCCAGCAAGGCCCTGAAGCCCTCCCTCAAGGTGGAGCCGAGAACCCTTACGCTCCTTCAAGTACAG
 CGGCAACGCGGTGGTGGAGAGCTACTCGGTGCTGGGCAACTGCCGGCCCTCCGACCCTTACAGCATGAAC
 AGCGTGTACTCTACCCTCCTACTATGCACAGCCAGCCTGACCTCCGTCAATGGCTTCCACTCCAAGT
 ACGCTCTCCCGTCTTTAGCTACTATGGCTTCCATCCAGCAACCCCGTCTTCCCTCTCAGTCTCTGGG
 TCCTGGTGCCTGGGGCACAGTGGCAGCAGTGGCAGTTTTGAGAAGAAGCCAGACCTCCACGCTCTGCAC
 AACAGCCTGAGCCCGGCCTACGGTGGTGTGAGTTTGGCAGCTGCCAGCCAGGCTGTTCCACAGACG
 CCCACCACCCACTCCTACCACCAGCAGCCTGGGTACCCAGGCCCAAGGAGTATCTGCTTCCCAAGGC
 CCCCTACTCCACTCAGTGTCCAGGGACCCCTCCCCCTTTGCCAGAGCTCCAAGTGTACAACAGATCC
 ATCAAGCAAGAGCCAGTAGACCCGCTGACCCAGGCTGAGCCTGTGCCAGAGACGCTGGCAAGATGGGCA
 AGACACCTCTGTCCGAGGTGTCTCAGAATGGAGGACCCAGTACCTTTGGGGACAGTACTCAGGAGGCC
 AAGCATGTCCCCAAGAGGACTAACGGTGTGGGTGGCAGCTGGGGTGTGTCTCGTCTGGGGAGAGTCTT
 GCCATCGTCCCTGACAAGCTCAGTTCCTTTGGGGCCAGCTGCCTGGCCCCCTCCCACTTACAGATGGCC
 AGTGGGGGCTGTCCCCGGTGGGGGCAGCAGGCAGCTTCCACTCTGGAGGACGGCTGCGAGGCAAACC
 GTGGAGCCCCTGCAAGTTTGGGAACAGCACCTCGGCCTTGCTGGGCCACGCTGACTGAGAAGCCGTGG
 GCGCTGGGGGCAGGGGATTTCAACTCGGCCCTGAAAGGTAGTCTGGGTTCCAAGACAAGCTGTGGAACC
 CCATGAAAGGAGAGGAGGGCAGGATCCAGCCGAGGGGCCAGCCAGCTGGACAGGGCCTGGCAGTCTT
 TGGTCTGCCCTGGGATCCAGCGAGAAGCTGTTTGGGGCTCTGAAGTCAAGGAGAGAAGCTGTGGACCCC
 TTCAGCTGGAGGAGGGCCGGCTGAGGAGCCCCCAGCAAGGGAGCGGTGAAGGAGGAGAAGGGCGGTG
 GTGGTGGGAGGAGGAAGAGGAGGAGCTGTGGTGGACAGTGAACACAACCTTCTGGACGAGAACATCGG
 CGGCGTGGCCGTGGCCCCAGCCACGGCTCCATCCTCATCGAGTGTGCCGGCGGGAGCTGCACGCCACC
 ACGCCGCTTAAGAAGCCCAACCCTGCCACCCACCCGCATCTCGCTGGTCTTCTACCAGACAAGAACC
 TCAACCAGCCCAACCACGGGCTGGCCCTCTGGGAAGCCAAGATGAAGCAGCTGGCGGAGAGGGCACGGC
 ACGGCAGGAGGAGCTGCCCGGCTGGGCCAGCAGGAGGCAAGCTCTACGGGAAGAAGCGCAAG
 TGGGGGGGCACTGTGGTTGCTGAGCCCCAGCAGAAAGAGAAGAAGGGGGTCTGCCACCCGGCAGGCAC
 TGGCTGTGCCACAGACTCGGCGGTACCGTGTCTCCTATGCCTACACGAAGGTCACTGGCCCCCTACAG
 CCGCTGGATC

ACGCGTACGCGGCCGCTCGAG - GFP Tag - GTTTAA

Protein Sequence:

>RG214497 representing NM_144993
 Red=Cloning site Green=Tags(s)

MDSGPVYHGDSRQLSASGVPVNGAREPAGPSLLGTGGPWVVDQKPDWEAAPGPAHTARLEDAHDLVAFSA
 VAEAVSSYGALSTRLYETFNREMSREAGNNSRGRPPGPEGCSAGSEDLDTLQTALALARHGMPNCNCD
 GPECPDYLEWLEGKIKSVMEGGEERPLPGPLPPGEAGLPAPSTRPLLSEVPQISPEGLPLSQSALS
 IAKEKNISLQTAIAIEALTQLSSALPQPSHSTPQASCPLPEALSPPAPFRSPQSYLRAPSWPVVPEEHS
 SFAPDSSAFPPATPRTEFPEAWGTDTPPATPRSSWPMRPPSPDPAEQLLGSASDYIQSVFKRPEALP
 TKPKVKVEAPSSSPAPAPSPVLQREAPTSPSEPDTHQKAQTALQQLHHKRSLFLEQVHDTSFAPSEPS
 APGWPPSSPVRLPDRPPKEKKKLPAGGPVGTAKAAPGIKPSVRKPIQIKSRPREAQPLFPPVR
 QIVLEGLRSPASQEVQAHPPAPLPASQGSVPLPPEPSLALFAPSPSRDSSLPTQEMRSPSPMTALQPG
 STGPLPADDKLEELIRQFEAEFGDSFGLPGPPSVPIQDPENQQTCLPAPESPATRSPKQIKIESSGAV
 TVLSTTCFHSEEGQEATPTKAENPLTPTLSGFLESPLKYLDTPKSLLDTPAKRAQAEFFPTCDCVEQIV
 EKDEGPPYTHLGSQPTVASIRELMEERYGKGAIRIEKVIYTGKEGKSSRGCPIAKWVIRRHTLEEKLL
 CLVRRHRAGHCQNAVIVILILAWEGIPRSLGDTLYQELDTLRKYGNPSTRRCGLNDDRTCACQKDPNT
 CGASFSFGCSWSMYFNGCKYARSKTPRFRLAGDNPKEEVLKRSFQDLATEVAPLYKRLAPQAYQNQVT
 NEEIAIDCRLGLKEGRPFAGVTACMDFAHAHKDQHNLYNGCTVVCTLKEDNRCVGIPEDEQLHVLPL
 YKMANTDEFGSEENQNAKVGSGAIQVLTAFFPREVRLPEPAKSCRQRQLEARKAAAEKKIQKEKLPSTE
 KIKQEALELAGITSDPGLSLKGGLSQQLKPSLKVPEQNHFSSFKYSGNAVVESYVNLGNCRSDPYSMN
 SVYSYHSYYAQPSTLTVNGFHSKYALPSFSYYGFPSSNPVFPSSQFLGPGAWGHSGSSGSEKPKDLHALH
 NSLSPAYGGAFAELPSQAVPTDAHHTPHHQPAAYPGKEYLLPKAPLLHSVSRDPSPFQSSNRYNS
 IKQEPVDPLTQAEPVPRDAGKMGKTPLEVSQNGGPHLWGQYSGGSPMSPKRTNGVGGSWGVSFSSGESP
 AIVPDKLSSFASCLAPSHFTDQWGLFPGEGQQAASHSGRLRGKWPSPCKFGNSTSALAGPSLTKPW
 ALGAGDFNSALKGSPGFQDKLWNPMPKGEGRIPAAGASQLDRAWQSFGLPLGSSEKLFGLKSEEKLDWP
 FSLEEGPAEPPSKGAVKEEKGGGGAEIIELWSDSEHNFLDENIGGVAVAPAHGSILIECARRELHAT
 TPLKKNRCHPTRISLVFYQHKNLNQPNHGLALWEAKMKQLAERARARQEEAARLGLGQEQEAKLYGKKRK
 WGGTVVAEPQKEKKGVVPTRQALAVPTDSAVTVSSYAYTKVTGPYSRWI

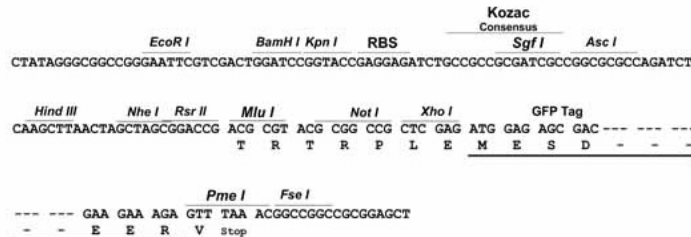
TRTRPLE - GFP Tag - V

Restriction Sites:

Sgfl-MluI

Cloning Scheme:

Cloning sites used for ORF Shutting:

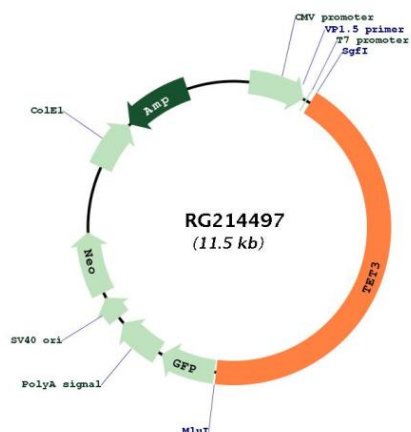


ACCN:

NM_144993

ORF Size:	4980 bp
OTI Disclaimer:	The molecular sequence of this clone aligns with the gene accession number as a point of reference only. However, individual transcript sequences of the same gene can differ through naturally occurring variations (e.g. polymorphisms), each with its own valid existence. This clone is substantially in agreement with the reference, but a complete review of all prevailing variants is recommended prior to use. More info
OTI Annotation:	This clone was engineered to express the complete ORF with an expression tag. Expression varies depending on the nature of the gene.
Components:	The ORF clone is ion-exchange column purified and shipped in a 2D barcoded Matrix tube containing 10ug of transfection-ready, dried plasmid DNA (reconstitute with 100 ul of water).
Reconstitution Method:	<ol style="list-style-type: none">1. Centrifuge at 5,000xg for 5min.2. Carefully open the tube and add 100ul of sterile water to dissolve the DNA.3. Close the tube and incubate for 10 minutes at room temperature.4. Briefly vortex the tube and then do a quick spin (less than 5000xg) to concentrate the liquid at the bottom.5. Store the suspended plasmid at -20°C. The DNA is stable for at least one year from date of shipping when stored at -20°C.
RefSeq:	NM_144993.1 , NP_659430.1
RefSeq Size:	10983 bp
RefSeq ORF:	4982 bp
Locus ID:	200424
Cytogenetics:	2p13.1
Protein Families:	Transcription Factors
Gene Summary:	Members of the ten-eleven translocation (TET) gene family, including TET3, play a role in the DNA methylation process (Langemeijer et al., 2009 [PubMed 19923888]).[supplied by OMIM, Nov 2010]

Product images:



Circular map for RG214497