

## Product datasheet for **RG214465**

### LINGO2 (NM\_152570) Human Tagged ORF Clone

#### Product data:

Product Type:	Expression Plasmids
Product Name:	LINGO2 (NM_152570) Human Tagged ORF Clone
Tag:	TurboGFP
Symbol:	LINGO2
Synonyms:	LERN3; LRRN6C
Mammalian Cell Selection:	Neomycin
Vector:	pCMV6-AC-GFP (PS100010)
E. coli Selection:	Ampicillin (100 ug/mL)



[View online »](#)

**ORF Nucleotide Sequence:**

>RG214465 representing NM\_152570  
 Red=Cloning site Blue=ORF Green=Tags(s)

TTTTGTAATACGACTCACTATAGGGCGGCCGGAATTCGTCGACTGGATCCGGTACCGAGGAGATCTGCC  
 GCC**CGGATCGCC**

ATGCTTCACACGGCCATATCATGCTGGCAGCCATTCTGGGTCTGGCTGTGGTGTAAATCTTCATGGGAT  
 CCACCATTGGCTGCCCGCTCGCTGTGAGTGCTCTGCCAGAACAATCTGTTAGCTGTACAGAAGGCG  
 ATTGATCGCCATCCCAGAGGGCATTCCCATCGAAACAAAATCTTGGACCTCAGTAAAAACAGGCTAAAA  
 AGCGTCAACCCTGAAGAATTCATATCATATCCTCTGCTGGAAGAGATAGACTTGAGTGACAACATCATTG  
 CCAATGTGGAACAGGAGCATTCAACAATCTCTTTAACCTGCGTTCCTCCGCCTAAAAGGCAATCGTCT  
 AAAGCTGGTCCCTTTGGGAGTATCACGGGGCTGTCCAATCTCACTAAGCTTGACATTAGTGAGAATAAG  
 ATTGTCATTTTACTAGACTACATGTTCCAAGATCTACATAACCTGAAGTCTCTAGAAGTGGGGGACAATG  
 ATTTGGTTTATATATCACACAGGGCATTAGTGGGCTTCTTAGCTGGAGCAGCTCACCTGGAGAAATG  
 CAATTAACAGCAGTACCAACAGAAGCCCTCTCCACCTCCGAGCCTCATCAGCCTGCATCTGAAGCAT  
 CTCAATATCAACAATATGCCTGTGTATGCCTTTAAAAGATTGTTCCACCTGAAACACCTAGAGATTGACT  
 ATTTGGCCTTTACTGGATATGATGCCTGCCAATAGCCTCTACGGTCTCAACCTCACATCCCTTTAGTCAC  
 CAACCAATCTGTCTACTGTACCTTCCTTGCCTTTAAACACCTGGTATACCTGACTCACCTTAACCTC  
 TCCTACAATCCCATCAGCACTATTGAAGCAGGCATGTTCTCTGACCTGATCCGCCTTCAGGAGCTCATA  
 TAGTGGGGGCCAGCTTCGCACCATTGAGCCTCACTCCTTCCAAGGGCTCCGCTTCTACGCGTGTCAA  
 TGTGTCTCAGAACCTGCTGAAACTTTGGAAGAGAATGTCTTCTCCTCCCTAGGGCTCTGGAGGCTTG  
 AGCATTAAACAACAACCTCTGGCCTGTGACTGCCGCTTCTCTGGATCTTGACGCGACAGCCACCCTGC  
 AGTTTGGTGGCCAGCAACCTATGTGTGCTGGCCAGACACCATCCGTGAGAGGCTTTTCAAGGATTCCA  
 TAGCACTGCCCTTTCTTTTACTTTACCTGCAAAAAACCCAAAATCCCGTAAAAGAAGTTGCAGCATCTG  
 CTAGTAGATGAAGGGCAGACAGTCCAGCTAGAATGCAGTGCAGATGGAGACCCGAGCCTGTGATTTCT  
 GGGTGACACCCGAAGGCGTTTTCATCACCAAGTCCAATGGAAGAGCCACCCTGTTGGGTGATGGCAC  
 CTTGGAATCCGCTTTGCCAGGATCAAGACAGCGGGATGATGTTTGCATCGTAGCAATGCTGCTGGG  
 AATGATACCTTACAGCCTCCTTAACTGTGAAAGGATTCGCTTCAGATCGTTTTCTTTATGCGAACAGGA  
 CCCCTATGTACATGACCGACTCCAATGACACCATTTCCAATGGCACCAATGCCAATACTTTTTCCCTGGA  
 CCTTAAAAAATACTGGTGTCTACAGCTATGGGCTGCTTACATTCCTGGGAGTGGTTTTATTTGTTTT  
 CTTCTCCTTTTTGTGTGGAGCCAGGGAAGGCAAGCACAAAAACAGCATTGACCTTGAGTATGTGCCCA  
 GAAAAACAATGGTGTGTTGTGGAAGGAGAGGTAGCTGGACCCAGGAGTTCAACATGAAAATGATT

AG**CGGACCG**ACGCGTACGCGGCCGCTCGAG - GFP Tag - GTTTAA

**Protein Sequence:**

>RG214465 representing NM\_152570  
 Red=Cloning site Green=Tags(s)

MLHTAISCWQPFLLAVVLIFMGSTIGCPARCECSAQNKSVSCHRRRLIAIPEGIPIETKILDLSKNRLK  
 SVNPEEFISYPLLEEIDLSNIIANVEPGAFNNLFNLRSLRLKGNRLKLVPLGVFTGLSNLTKLDISENK  
 IVILLDYMFDLHNLKSLEVDNDLVYISHRAFSGLLSLEQLTLEKCNLTAVPTEALSHLRSLISLHLKH  
 LNINNPVYAFKRLFHLKLEIDYWPLDMMPANSLYGLNLTSLSVTNTNLSTVPFLAFKHLVYLTHLNL  
 SYNPISTIEAGMFSDLIRLQELHIVGAQLRTIEPHSFQGLRFLRVLNVSQNLELLEENVFSSPRALEVL  
 SINNNPLACDCRLLWILQRQPTLQFGGQPPMCAGPDTIRERSFKDFHSTALSFYFTCKKPKIREKQLHL  
 LVDEGQTVQLECSADGDPQPVISWVTPRRRFITTKSNGRATVLDGDTLEIRFAQDQDSGMYVCIASNAAG  
 NDTFTASLTVKGFASDRFLYANRTPMYMTSDNTISNGTNANTFSLDLKTLVSTAMGCFVFLGVVLFVCF  
 LLLFVWSRGGKHKNSIDLEYVPRKNNGAVVEGEVAGPRRFNMKMI

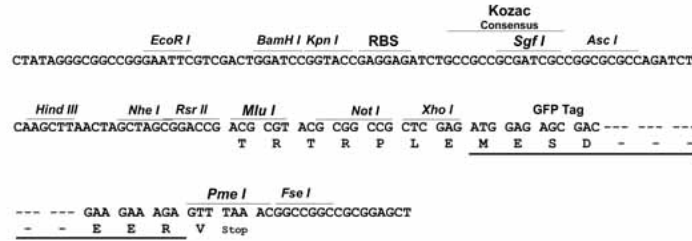
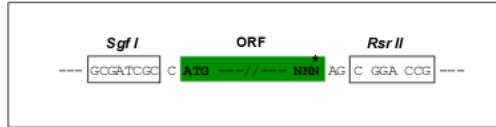
SGP**TRRRLE** - GFP Tag - V

**Restriction Sites:**

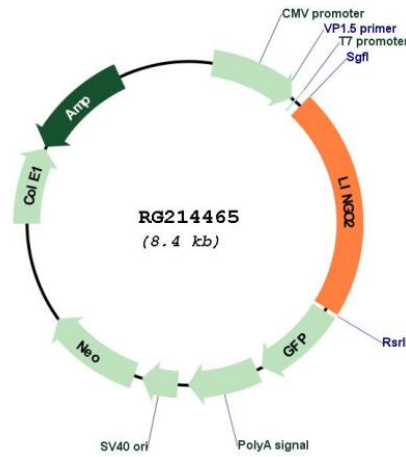
Sgfl-RsrII

Cloning Scheme:

Cloning sites used for ORF Shuttling:



Plasmid Map:



ACCN: NM\_152570  
 ORF Size: 1818 bp

<b>OTI Disclaimer:</b>	The molecular sequence of this clone aligns with the gene accession number as a point of reference only. However, individual transcript sequences of the same gene can differ through naturally occurring variations (e.g. polymorphisms), each with its own valid existence. This clone is substantially in agreement with the reference, but a complete review of all prevailing variants is recommended prior to use. <a href="#">More info</a>
<b>OTI Annotation:</b>	This clone was engineered to express the complete ORF with an expression tag. Expression varies depending on the nature of the gene.
<b>Components:</b>	The ORF clone is ion-exchange column purified and shipped in a 2D barcoded Matrix tube containing 10ug of transfection-ready, dried plasmid DNA (reconstitute with 100 ul of water).
<b>Reconstitution Method:</b>	<ol style="list-style-type: none"><li>1. Centrifuge at 5,000xg for 5min.</li><li>2. Carefully open the tube and add 100ul of sterile water to dissolve the DNA.</li><li>3. Close the tube and incubate for 10 minutes at room temperature.</li><li>4. Briefly vortex the tube and then do a quick spin (less than 5000xg) to concentrate the liquid at the bottom.</li><li>5. Store the suspended plasmid at -20°C. The DNA is stable for at least one year from date of shipping when stored at -20°C.</li></ol>
<b>RefSeq:</b>	<a href="#">NM_152570.1</a> , <a href="#">NP_689783.1</a>
<b>RefSeq Size:</b>	2792 bp
<b>RefSeq ORF:</b>	1821 bp
<b>Locus ID:</b>	158038
<b>UniProt ID:</b>	<a href="#">Q7L985</a>
<b>Cytogenetics:</b>	9p21.2-p21.1
<b>Domains:</b>	LRRNT, LRRCT, LRR, ig
<b>Protein Families:</b>	Druggable Genome, Transmembrane