

Product datasheet for **RG214452**

DUSP16 (NM_030640) Human Tagged ORF Clone

Product data:

Product Type:	Expression Plasmids
Product Name:	DUSP16 (NM_030640) Human Tagged ORF Clone
Tag:	TurboGFP
Symbol:	DUSP16
Synonyms:	MKP-7; MKP7
Mammalian Cell Selection:	Neomycin
Vector:	pCMV6-AC-GFP (PS100010)
E. coli Selection:	Ampicillin (100 ug/mL)



[View online »](#)

ORF Nucleotide
Sequence:

>RG214452 representing NM_030640
Red=Cloning site Blue=ORF Green=Tags(s)

TTTTGTAATACGACTCACTATAGGGCGGCCGGAATTCGTCGACTGGATCCGGTACCGAGGAGATCTGCC
GCC**CGGATCGCC**

ATGGCCCATGAGATGATTGGAAC TCAAATGT TACTGAGAGGTTGGTGGCTCTGCTGAAAAGTGGAAACGG
AAAAAGTGCTGCTAATTGATAGCCGCCATTTGTGGAATACAATACATCCACATTTTGGAAAGCCATTAA
TATCAACTGCTCCAAGCTTATGAAGCGAAGGTTGCAACAGGACAAAAGTGAATTACAGAGCTCATCCAG
CATTACAGCGAAACATAAGGTTGACATTGATTGCAGTCAGAAGGTTGTAGTTTACGATCAAAGCTCCCAAG
ATGTTGCCTCTCTCTCTCAGACTGTTTTCTACTGTACTTCTGGGTA AACTGGAGAAGAGCTTCAACTC
TGTTACCTGCTGCAGGTGGGTTTGTGAGTTCTCTCGTTGTTTCCCTGGCCTCTGTGAAGGAAAAATCC
ACTCTAGTCCCTACCTGCATTTCTCAGCCTTGCTTACCTGTTGCCAACATTGGGCCAACCCGAATTCCTC
CCAATCTTTATCTTGGCTGCCAGCGAGATGTCCTCAACAAGGAGCTGATGCAGCAGAATGGGATTGGTTA
TGTGTTAAATGCCAGCAATACCTGTCCAAGCCTGACTTTATCCCGAGTCTCATTTCCTGCGTGTGCCCT
GTGAATGACAGCTTTTGTGAGAAAAATTTGCCGTGGTTGGACAAATCAGTAGATTTTCATTGAGAAAGCAA
AAGCCTCCAATGGATGTGTTCTAGTGCAGTGTAGCTGGGATCTCCCGCTCCGCCACCATCGCTATCGC
CTACATCATGAAGAGGATGGACATGTCTTTAGATGAAGCTTACAGATTTGTGAAAGAAAAAGACCTACT
ATATCTCCAAACTTCAATTTTCTGGGCCAACTCCTGGACTATGAGAAGAAGATTAAGAACCAGACTGGAG
CATCAGGGCCAAAGAGCAAAC TCAAGCTGCTGCACCTGGAGAAGCCAAATGAACCTGTCCCTGCTGTCTC
AGAGGGTGGACAGAAAAGCGAGACGCCCTCAGTCCACCCTGTGCCGACTCTGCTACCTCAGAGGCAGCA
GGACAAAGGCCCGTGCATCCCGCCAGCGTGCCAGCGTGCCAGCGTGCAGCCGTCGCTGTTAGAGGACA
GCCCGCTGGTACAGGCGCTCAGTGGGCTGCACCTGTCCGACAGCAGGCTGGAAGACAGCAATAAGCTCAA
GGTTCTCTCTCTGGATATCAAATCAGTTTCATATTACGCCAGCATGGCAGCATCCTTACATGGCTTC
TCCTCATCAGAAGATGCTTTGGAATACTACAAACCTTCCACTACTCTGGATGGGACCAACAAGCTATGCC
AGTTCTCCCTGTTT CAGGAACTATCGGAGCAGACTCCC GAAACCAGTCTGATAAGGAGGAAGCCAGCAT
CCCCAAGAAGCTGCAGACCGCCAGGCCTT CAGACAGCCAGAGCAAGCGATTGCATTTCGGTCAGAACCAGC
AGCAGTGGCACC GCCCAGAGGTCCTTTTATCTCCACTGCATCGAAGTGGGAGCGTGGAGGACAATTACC
ACACCAGTTCCTTTTCGGCCTTTCCACCAGCCAGCAGCACCTCACGAAGTCTGCTGGCCTGGGCCTTAA
GGGCTGGCACTCGGATATCTTGGCCCCCAGACCTTACCCTTCCCTGACCAGCAGCTGGTATTTT GCC
ACAGAGTCTCTCACTTCTACTCTGCCTCAGCCATCTACGGAGGCAGTGCAGTTACTCTGCCTACAGCT
GCAGCCAGCTGCCCACTTGC GGAGACCAAGTCTATTCTGTGCGCAGGCGGCAGAAGCCAAGTGACAGAGC
TGACTCGCGGCGGAGCTGGCATGAAGAGAGCCCTTTGAAAAGCAGTTTAAACGCAGAAGCTGCCAAATG
GAATTTGGAGAGAGCATCATGT CAGAGAACAGGTCACGGGAAGAGCTGGGGAAAAGTGGGCAGTCAGTCTA
GCTTTTTCGGGCAGCATGGAAATCATTGAGGTCTCC

ACGCGTACGCGGGCCGCTCGAG - GFP Tag - GTTTAA

Protein Sequence: >RG214452 representing NM_030640
 Red=Cloning site Green=Tags(s)

MAHEMIGTQIVTERLVALLESGTEKVLIDSRPFVEYNTSHILEAININCSKLMKRRLQQDKVLITELIQ
 HSAKHKVDIDCSQKVVVYDQSSQDVASLSSDCFLTVLLGKLEKSFNSVHLLAGGFAEFSRCFPGLCEGKS
 TLVPTCISQPCLPVANIGPTRILPNLYLGCQRDVLNKELMQQNGIGYVLNASNTCPKPDFIPESHFLRVP
 VNDSFCEKILPWLDKSVDFIEKAKASNGCVLVHCLAGISRSATIAIAYIMKRMDSLDEAYRFVKEKRPT
 ISPNFNFLGQLLDYEKKIKNQGTGASGPKSKLKLHLEKPNPVPVAVSEGGQKSETPLSPPCADSATSEAA
 GQRPVHPASVPSVPSVQPSLLEDSPVQALSGHLHLSADRLEDNKLKRSFSLDIKSVSYSASMAASLHGF
 SSEDALYYKPTTLDGTNKLQFSPVQELSEQTPETSPDKEEASIPKKLQTARPSDSQSKRLHSVRTS
 SSGTAQRSLLSPLHRSGSVEDNYHTSFLFGLSTSQQHLTKSAGLGLKGWHSIDLAPQSTPSLTSSWYFA
 TESSHFYSASAIYGGSASYSAYSCSQLPTCGDQVYSVRRRQKPSDRADSRRSWHEESPFEKQFKRRSCQM
 EFGESIMSENRSREELGKVGVSQSSFSGSMEIEVS

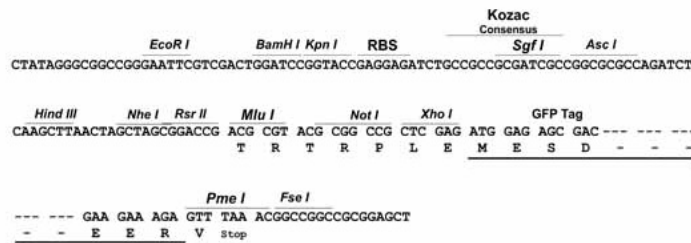
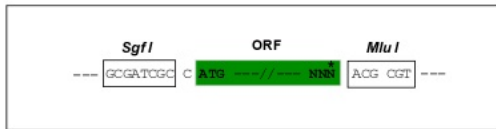
TRTRPLE - GFP Tag - V

Restriction Sites:

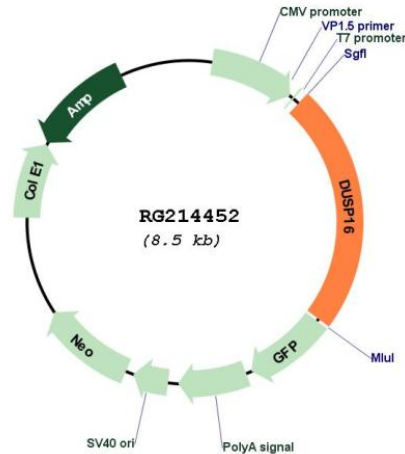
Sgfl-MluI

Cloning Scheme:

Cloning sites used for ORF Shuttling:



Plasmid Map:



ACCN: NM_030640

ORF Size: 1995 bp

OTI Disclaimer: The molecular sequence of this clone aligns with the gene accession number as a point of reference only. However, individual transcript sequences of the same gene can differ through naturally occurring variations (e.g. polymorphisms), each with its own valid existence. This clone is substantially in agreement with the reference, but a complete review of all prevailing variants is recommended prior to use. [More info](#)

OTI Annotation: This clone was engineered to express the complete ORF with an expression tag. Expression varies depending on the nature of the gene.

Components: The ORF clone is ion-exchange column purified and shipped in a 2D barcoded Matrix tube containing 10ug of transfection-ready, dried plasmid DNA (reconstitute with 100 ul of water).

Reconstitution Method:

1. Centrifuge at 5,000xg for 5min.
2. Carefully open the tube and add 100ul of sterile water to dissolve the DNA.
3. Close the tube and incubate for 10 minutes at room temperature.
4. Briefly vortex the tube and then do a quick spin (less than 5000xg) to concentrate the liquid at the bottom.
5. Store the suspended plasmid at -20°C. The DNA is stable for at least one year from date of shipping when stored at -20°C.

RefSeq: [NM_030640.3](#)

RefSeq Size:	3566 bp
RefSeq ORF:	1998 bp
Locus ID:	80824
UniProt ID:	Q9BY84
Cytogenetics:	12p13.2
Protein Families:	Druggable Genome, Phosphatase
Protein Pathways:	MAPK signaling pathway
Gene Summary:	<p>This gene encodes a mitogen-activated protein kinase phosphatase that is a member of the dual specificity protein phosphatase subfamily. These phosphatases inactivate their target kinases by dephosphorylating both the phosphoserine/threonine and phosphotyrosine residues. The encoded protein specifically regulates the c-Jun amino-terminal kinase (JNK) and extracellular signal-regulated kinase (ERK) pathways.[provided by RefSeq, May 2010]</p>