

Product datasheet for **RG214413**

DAB2IP (NM_032552) Human Tagged ORF Clone

Product data:

Product Type:	Expression Plasmids
Product Name:	DAB2IP (NM_032552) Human Tagged ORF Clone
Tag:	TurboGFP
Symbol:	DAB2IP
Synonyms:	AF9Q34; AIP-1; AIP1; DIP1/2
Mammalian Cell Selection:	Neomycin
Vector:	pCMV6-AC-GFP (PS100010)
E. coli Selection:	Ampicillin (100 ug/mL)
ORF Nucleotide Sequence:	>RG214413 representing NM_032552 Red=Cloning site Blue=ORF Green=Tags(s)

TTTTGTAATACGACTCACTATAGGGCGGCCGGAATTCGTCGACTGGATCCGGTACCGAGGAGATCTGCC
GCC**CGATCGCC**

ATGGAGCCCGACTCCCTTCTGGACCAAGACGACTCCTACGAGTCGCCTCAAGAAAGGCCGGGCTCTCGGC
GCAGCCTGCCTGGCAGCCTTCCGAGAAGAGCCCCAGCATGGAGCCCTCGGCCGCCACGCCGTTCCGGGT
CACGGGCTTCTCAGCCGCCCTCAAGGGCTCCATCAAGCGCACCAAGAGCCAGCCAAGCTGGACCGC
AACCACAGCTTCCGCCACATCCTGCCGGGTTCCGGAGCGCCGCCGCCGCCGCGGACAATGAGAGGT
CCCATCTGATGCCGAGGCTGAAGGAGTCTCGCTCCACGAGTCCCTGCTCAGCCCCAGCAGTGCCTGGG
GGCGCTGGACCTCAGCATGGAGGAAGAGGTGGTCAAGCCCGTGCACAGCAGCATCCTTGGCCAGGAC
TACTGCTTCGAGGTGACGACGTATCAGGAAGCAAGTGTCTTCTGCCGGTCTGCAGCTGAGCGGGATA
AGTGGATGGAGAACCTCCGGCGAGCGGTGCATCCCAACAAGGACAACAGCCGGCTGTGGAGCACATCCT
GAAGCTGTGGGTGATCGAGGCCAAGGACCTGCCAGCCAAGAAGAAGTACCTGTGCGAGCTGTGCCTGGAC
GATGTGCTCTATGCCCGCACCACGGCAAGCTCAAGACGGACAATGTTTTCTGGGGCGAGCACTTCGAGT
TCCACAACCTGCCGCTCTGCGCACGGTCACTGTCCACCTGTACCGGGAGACCGACAAGAAGAAGAAGAA
GGAGCGCAACAGTTACCTGGGCTGGTGAAGCCTACCTGCTGCCTCGGTGGCCGGCGGCAGTTCGTGGAG
AAGTGGTACCCGGTGGTGAAGCCCAACCCCAAGGGCGGCAAGGGCCCTGGACCAATGATCCGCATCAAG
CGCGCTACCAAACCATCACCATCCTGCCATGGAGATGTACAAAGAGTTGCTGAGCACATCACCAACCA
CTACCTGGGGCTGTGTGACGCCCTCGAGCCCATCCTCAGTGCCAAGACCAAGGAGGAGATGGCATCTGCC
CTGGTGCACATCCTGCAGAGCACGGGCAAGGTGAAGGACTTCTGACAGACCTGATGATGTGAGAGTGG
ACCGCTGCGGGGACAACGAGCACCTCATCTCCGGGAGAACAACACTGGCCACCAAGGCCATTGAGGAGTA
CCTCAAGTAGTGGGCCAGAAGTACCTGCAGGACGCCCTAGGTGAGTTCATCAAAGCGCTGTATGAGTCA
GATGAGAACTGCGAAGTGGATCCAGCAAGTGCTCGGCCGCTGACCTCCAGAGCACCAGGGCAACCTCA
AGATGTGCTGCGAGCTGGCCTTCTGCAAGATCATCAACTCCTACTGTGTCTTCCACGGGAGTTGAAAGA
GGTGTTCCTCGTGAGGCAGGAGTGCAGCAGTCGCGGCCGCCCGGACATCAGTGAAGCGCTCATCAGC



[View online »](#)

```
GCCTCCCTCTTCCTGCGCTTCCTCTGCCAGCCATCATGTGCGCCCTCACTCTTCAACCTGCTGCAGGAGT
ACCCTGATGACCGCACTGCCCGCACCTCACCTCATCGCCAAGGTCACCCAGAACCTGGCCAACCTTTGC
CAAATTTGGCAGCAAGGAGGAATACATGTCCTTATGAACCAGTTCTAGAGCATGAGTGGACCAACATG
CAGCGCTTCTGCTGGAGATCTCCAACCCCGAGACCCTCTCCAATACAGCCGGCTTCGAGGGCTACATCG
ACCTGGGCCGCGAGCTCTCCAGCCTGCACTCACTGCTCTGGGAGGCCGTGAGCCAGCTGGAGCAGAGCAT
AGTATCCAAAACGGGACCCTGCCTCGGATCCTGAGGGACGTCCACACAGCACTGAGCAGCCAGGTAGC
GGGCAGCTCCAGGGACCAATGACCTGGCTCCACACCGGGCTCTGGCAGCAGCAGCATCTCAGATGGGC
TGCAGAAGATGGTGATTGAGAACGATCTTCCGGTCTGATAGATTTACCCGGTTACCGTCTCCAACCCC
CGAAAACAAGGACTTGTTTTTGTGACAAAGTCTCCGGGTCCAGCCCTCACCTGCCCGCAGCTCGAGT
TACTCGGAAGCCAACGAGCCTGATCTTCAGATGGCCAACGGTGGCAAGAGCCTCTCCATGGTGGACCTCC
AGGACGCCCGCACGCTGGATGGGAGGCAGGCTCCCCGGCGGGCCCCGACGTCTCCCCACAGATGGGCA
GGCCGCTGCAGCTCAGCTGGTGGCCGGGTGGCCGGCCCGGCAACCCAGTGAACCTGGCAGGGCTGGCC
ACGGTGCAGCGGGCAGGCCAGACACCAACCACACCAGGCACCTCCGAGGGCGGCCAGGCCGGCCCCAGC
TGTTGGCACCGCTCTCCTCCAGAACCCTGTGTACCAGATGGCGGCTGGCTGCCGTGTACCCCGTGG
CCTTGGCGACTCAGGCTCTGAGGGCCACAGCTCCCTGAGCTCACACAGCAACAGCGAGGAGTTGGCGGT
GCTGCCAAGCTGGGAAGTTTCAGCACTGCCCGGAGGAGCTGGCTCGGGCGCCCGGTGAGCTGGCACGGC
GACAGATGCTCACTGACTGAAAAAGGCGGGCAGCCACGGTGCACGGCAGAACAGTGTGGCCCCAGAG
GAGGATCGACCAGCCTCCGCCCCACCCCGCCGCCACCTCTGCCCCCGCGGGCCGACGCCCCCAAC
CTGCTGAGCACCTGCAGTACCCAAGACCTCAAGCGAACCTGGCGTCCGGCTCACCTGATTGGGTGG
GCCCCAGTACCCGCTGAGGCAGCAGTCTCTTCTCCAAGGGGGACAGCCAGAAGTGAAGCCACGGGC
AGTGCACAAGCAGGGCCCTTACCTGTGAGCCCAATGCCCTGGACCGCACAGCCGCTTGGCTCTTGACC
ATGAACCGCAGTTGTTAGAAGACGAGGGCTGGGCCAGACCCCGCCACAGGGATAGGCTAAGGAGTA
AGGACGAGCTCAGCCAAGCAGAAAAGGACCTGGCGGTGCTCAGGACAAGCTGCGAATCTCCACAAAGAA
GCTGGAGGAGTATGAGACCTGTTCAAGTGCAGGAGGAGACGACGACAGAAAGTGGTGGATGAGTACCAG
GCACGGCTGGAGGAGGGCAGGAGCGGCTGCGGGCAGCAGGAGGACAAGGACATCCAGATGAAGGGCA
TCATCAGCAGGTTGATGTCGCTGGAGGAAGAACTGAAGAAGGACCACGCAGAGATGCAAGCGGCTGTGGA
CTCCAACAGAAGATCATTGATGCCAGGAGAAGCGCATTGCCTCGTTGGATGCCCCAATGCCCGCTC
ATGAGTGCCTGACCCAGCTGAAAGAGAGTATGCAT
```

ACGCGTACGCGGCCGCTCGAG - GFP Tag - GTTTAA

Protein Sequence:

>RG214413 representing NM_032552
 Red=Cloning site Green=Tags(s)

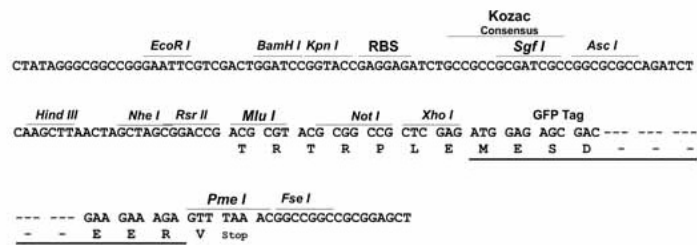
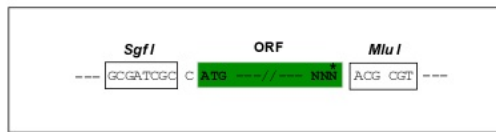
```
MEPDSSLDDQDDSYESPQERPGSRRSLPGSLSEKSPSMEPSAATPFRVTGFLSRRLKGSIKRTKSQPKLDR
NHSFRHILPGFRSAAAAAADNERSHLMPLKESRSHELLSPSSAVEALDLSMEEVVIKPVHSSILGQD
YCFEVTSSSGSKCFSCRSAAERDKWMENLRRVHPNKNDSRRVEHILKLVWIEAKDLPKAKKYLCELCLD
DVL YARTTGKTKDNVFWGEHFEFHNLPPLRVTVHL YRETDK KKKKERN SYLGLVSLPAASVAGRQFVE
KWYPVVT PNPKGKGPMPMIRIKARYQITILPMEYKEFAEHITNHYLGLCAALEPILSAKTKEEMASA
LVHILQSTGKVKDFL TDLMMSEVDRCGDNEHLIFRENTL ATKAIEEYKLVGQKYLQDALGEF IKALYES
DENCEVDPSKCSAADLPEHQGNLKMCELAFCIKIINSYCVFRELKEVFASWRQECSSRGRPDISERLIS
ASLFLRFLCPAIMSPSLFNLLQEYPDDRTARTLTLIAKVTQNLANFAKFGSKEEYMSFMNQFLEHEWTNM
QRFLLEISNPETLSNTAGFEGYIDLGRELSSLHSLLEAVSQLEQSI VSKLGPLPRILRDVHTALSTPGS
GQLPGTNDLASTPGSGSSSISAGLQKMIENDLSGLIDFTRLPSPTPENKDLFFVTRSSGVQSPARSSS
YSEANEPDLQMANGGKSLSMVDLQDARTLDGEAGSPAGPDVLP TDGQAAAQLVAGWPARATPVNLAGLA
TVRRAGQTPTTPGTSEGAPGRPQLLAPLSFQNPVYQMAAGLPLSPRGLGDSGSEGHSSLSHSNSEELAA
AAKLGFSFSTAAEELARRPGLARRQMSL TEKGGQPTVPRQNSAGPQRRI DQPPPPPPPPAPRGRTPPN
LLSTLQYPRPSSGTLASAPDWGPPSTRLRQSSSSKGDSPELKPRAVHKQGPSVSPNALDRTAAWLLT
MNAQLLEDEGLGPDPPHRDLRLSKDEL SQAEKDLAVLQDKLRISTKKLEEYETL FKCQEETTQKLVLEYQ
ARLEEGEERLRRQQEDKDIQMKGIISRLMSVEEELKKDHAEMQAAVDSKQKIIDAQEKRIASLDAANARL
MSALTQLKESMH
```

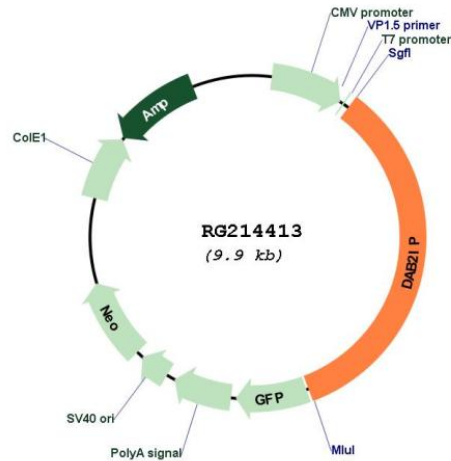
TRTRPLE - GFP Tag - V

Restriction Sites: SgfI-MluI

Cloning Scheme:

Cloning sites used for ORF Shutting:



Plasmid Map:


ACCN: NM_032552

ORF Size: 3396 bp

OTI Disclaimer: Due to the inherent nature of this plasmid, standard methods to replicate additional amounts of DNA in E. coli are highly likely to result in mutations and/or rearrangements. Therefore, OriGene does not guarantee the capability to replicate this plasmid DNA. Additional amounts of DNA can be purchased from OriGene with batch-specific, full-sequence verification at a reduced cost. Please contact our customer care team at custsupport@origene.com or by calling 301.340.3188 option 3 for pricing and delivery.

The molecular sequence of this clone aligns with the gene accession number as a point of reference only. However, individual transcript sequences of the same gene can differ through naturally occurring variations (e.g. polymorphisms), each with its own valid existence. This clone is substantially in agreement with the reference, but a complete review of all prevailing variants is recommended prior to use. [More info](#)

OTI Annotation: This clone was engineered to express the complete ORF with an expression tag. Expression varies depending on the nature of the gene.

Components: The ORF clone is ion-exchange column purified and shipped in a 2D barcoded Matrix tube containing 10ug of transfection-ready, dried plasmid DNA (reconstitute with 100 ul of water).

- Reconstitution Method:**
1. Centrifuge at 5,000xg for 5min.
 2. Carefully open the tube and add 100ul of sterile water to dissolve the DNA.
 3. Close the tube and incubate for 10 minutes at room temperature.
 4. Briefly vortex the tube and then do a quick spin (less than 5000xg) to concentrate the liquid at the bottom.
 5. Store the suspended plasmid at -20°C. The DNA is stable for at least one year from date of shipping when stored at -20°C.

RefSeq: [NM_032552.3](#), [NP_115941.2](#)
RefSeq Size: 5472 bp
RefSeq ORF: 3399 bp
Locus ID: 153090
UniProt ID: [Q5VWQ8](#)
Cytogenetics: 9q33.2
Gene Summary: DAB2IP is a Ras (MIM 190020) GTPase-activating protein (GAP) that acts as a tumor suppressor. The DAB2IP gene is inactivated by methylation in prostate and breast cancers (Yano et al., 2005 [PubMed 15386433]).[supplied by OMIM, May 2010]