

## Product datasheet for **RG214411**

### Rho GTPase activating protein 24 (ARHGAP24) (NM\_031305) Human Tagged ORF Clone

#### Product data:

Product Type:	Expression Plasmids
Product Name:	Rho GTPase activating protein 24 (ARHGAP24) (NM_031305) Human Tagged ORF Clone
Tag:	TurboGFP
Symbol:	ARHGAP24
Synonyms:	FILGAP; p73; p73RhoGAP; RC-GAP72; RCGAP72
Mammalian Cell Selection:	Neomycin
Vector:	pCMV6-AC-GFP (PS100010)
E. coli Selection:	Ampicillin (100 ug/mL)



[View online »](#)

**ORF Nucleotide Sequence:**

>RG214411 representing NM\_031305  
 Red=Cloning site Blue=ORF Green=Tags(s)

TTTTGTAATACGACTCACTATAGGGCGGCCGGAATTCGTCGACTGGATCCGGTACCGAGGAGATCTGCC  
 GCC**GCGATCGCC**

ATGCCTGAAGACCGGAATTCTGGGGGTGCCCGCTGGTGCCTTAGCCTCAACTCCTTTCATCCCTAAAA  
 CTACATACAGAAGAATCAAACGGTGTTTTAGTTTTCGGAAAGGCATTTTTGGACAGAACTGGAGGATAC  
 TGTTCTGTTATGAGAAGAGATATGGGAACCGTCTGGCTCCGATGTTGGTGGAGCAGTGCCTGGACTTTATC  
 CGACAAAGGGGGCTGAAAGAAGAGGGTCTCTTTGACTGCCAGGCCAGGCTAATCTTGTTAAGGAGCTCC  
 AAGATGCCTTTGACTGTGGGGAGAAGCCATCATTTGACAGCAACACAGATGTACACACGGTGGCCTCACT  
 TCTTAAGCTGTACCTCCGAGAATTCCAGAACCAGTTATTCCTTATGCGAAGTATGAAGATTTTTGTCA  
 TGTGCCAACTGCTCAGCAAGGAAGAGGAAGCAGGTGTTAAGGAATTAGCAAAGCAGGTGAAGAGTTTGC  
 CAGTGGTAAATTACAACCTCCTCAAGTATATTTGCAGATTCCTGGATGAAGTACAGTCTACTCGGGAGT  
 TAACAAAATGAGTGTGCAGAACTGGCAACGGTCTTTGGTCTAATATCCTGCGCCCCAAAGTGGAAAGT  
 CCTTTGACTATCATGGAGGGCACTGTGGTGGTCCAGCAGTTGATGTCAGTGATGATTAGCAAACATGATT  
 GCCTCTTTCCAAAGATGCAGAACTACAAGCAAGCCCCAAGATGGAGTGAAGCAACAACATGAAATTC  
 GAAGAAAGCCACCATGGGGCTGTACAGAAACAGGAGAACAATAACACCAAGGACAGCCCTAGTAGGCAG  
 TGCTCCTGGGACAAGTCTGAGTACCCAGAGAGCAGCATGAACAATGGATCCCCACAGCTCTATCAG  
 GCAGCAAAACCAACAGCCCAAAGAACAGTGTTCACAAGCTAGATGTGTCTAGAAGCCCCCTCTCATGGT  
 CAAAAAGAACCAGCCTTTAATAAGGGTAGTGGGATAGTTACCAATGGTCTTCAGCAGCAGTAATGCA  
 GAAGGTCTTGAGAAAACCAACCACCCCAATGGGAGCCTACAGGCCAGAAGGAGCTCTCACTGAAGG  
 TATCTGGTACAAAATGGGCACGCACAGTGTACAGAATGGAACGGTGCATGGGCATTTTGAACAGCGA  
 CACTCGGGAACCCACAAATGTTGAAACATGAGCTGGCTGCCAAATGGCTATGTGACCCTGAGGGAT  
 AACAAAGCAGAAAGAACAAGCTGGAGAGTTAGGCCAGCACAAACAGACTGTCCACCTATGATAATGTCCATC  
 AACAGTTCTCCATGATGAACCTTGATGACAAGCAGAGCATTGACAGTGTACCTGGTCCACTTCTCCTG  
 TGAAATCTCCCTCCCTGAGAACTCCAACCTGTGCTCTTCTACCACCCTGCCAGAGCAAGACTTT  
 TTTGGGGGAACCTTGAGGACCCTGTTTGGATGGGCCCCCGCAGGACGACCTTTCCACCCAGGGACT  
 ATGAAAGCAAAAGTGACCACAGGAGTGTGGGAGTCAAGTAGTCGTGCCACCAGTAGCAGTGACAACAG  
 TGAGACATTTGTGGCAACAGCAGCAGCAACCACAGTGCCTGCACAGTTTATGTTCCAGCCTGAAACAG  
 GAAATGACCAAAACAGAAGATAGAGTATGAGTCCAGGATAAAGAGCTTAGAACAGCGAAACTTGACTTTGG  
 AAACAGAAATGATGAGCCTCCATGATGAACTGGATCAGGAGAGGAAAAAGTTACAATGATAGAAATAAA  
 AATGCGAAATGCCGAGCAGCAAAAGAAGATGCCGAGAAAAAGAAATGACATGCTACAGAAAGAAATGGAG  
 CAGTTTTTTTCCAGTGGGAGAACTGACAGTGGAAACCCAGGAGAACCGAGAGAGGAAACACAATATGGA  
 TTCAG

**ACGCGT**ACGCGGCCGCTCGAG - GFP Tag - GTTTAA

**Protein Sequence:** >RG214411 representing NM\_031305  
 Red=Cloning site Green=Tags(s)

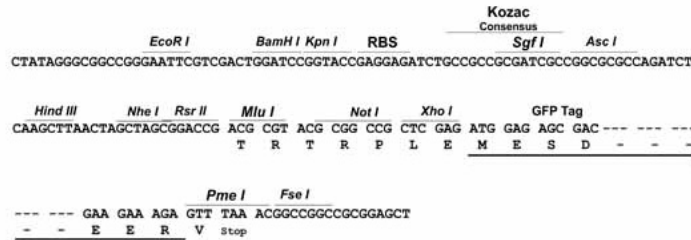
MPEDRNSGGCPAGALASTPFIPKTTYRRIKRCFSFRKGI FGQKLEDTVRYEKRYGNRLAPMLVEQCVDFI  
 RQRGLKEEGLFRLPGQANLVKELQDAFDCGKPSFDSNTDVHTVASLLKLYLRELPEPVIPYAKYEDFLS  
 CAKLLSKEEEAGVKELAKQVKS LPVVNYNLLKYICRFLDEVQSYSGVNMKMSVQNLATVFGPNILRPKVED  
 PLTIMEGTVVVQQLMSVMI SKHDCLFPKDAELQSKPQDGVSNNEIQKKATMGLLQNKENNNTKDSPSRQ  
 CSWDKSESPQRS SMNNGSPTALSGSKTNSPKNSVHKLDVSRSPPLMVKKNPAFNKGS GIVTNGSFSSSNA  
 EGLEKTQTTPNGSLQARRSSSLKVS GMTKMGTHSVQNGTVRMGILNSDTLGNPTNVRNMSWLPNGYVTLRD  
 NKQKEQAGELGQHNRLSTYDNVHQQFSMMNLDDKQSIDSATWSTSSCEISLPENSNSCRSSTTTTCPEQDF  
 FGGNFEDPVL DGPQQDDL SHPRDYESKSDHRVSGGRSSRATSSSDNSETFVGNSSSNHSAHSLVSSLKQ  
 EMTKQKIEYESRIKSLEQRNLTLETMMSLHDEL DQERKKFTMIEIKMRNAERAKEDA EAKRNDMLQKEME  
 QFFSTFGELTVEPRRTERGNTIWIQ

TRTRPLE - GFP Tag - V

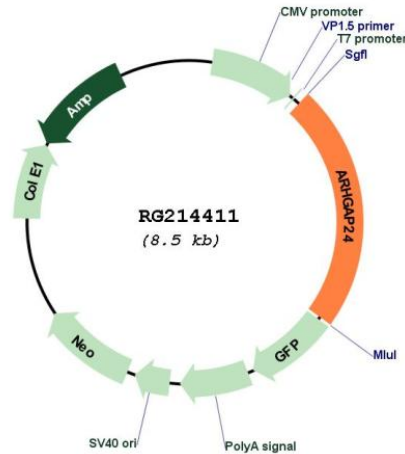
**Restriction Sites:** SgfI-MluI

**Cloning Scheme:**

Cloning sites used for ORF Shuttling:



Plasmid Map:



ACCN: NM\_031305

ORF Size: 1965 bp

OTI Disclaimer: The molecular sequence of this clone aligns with the gene accession number as a point of reference only. However, individual transcript sequences of the same gene can differ through naturally occurring variations (e.g. polymorphisms), each with its own valid existence. This clone is substantially in agreement with the reference, but a complete review of all prevailing variants is recommended prior to use. [More info](#)

OTI Annotation: This clone was engineered to express the complete ORF with an expression tag. Expression varies depending on the nature of the gene.

Components: The ORF clone is ion-exchange column purified and shipped in a 2D barcoded Matrix tube containing 10ug of transfection-ready, dried plasmid DNA (reconstitute with 100 ul of water).

Reconstitution Method:

1. Centrifuge at 5,000xg for 5min.
2. Carefully open the tube and add 100ul of sterile water to dissolve the DNA.
3. Close the tube and incubate for 10 minutes at room temperature.
4. Briefly vortex the tube and then do a quick spin (less than 5000xg) to concentrate the liquid at the bottom.
5. Store the suspended plasmid at -20°C. The DNA is stable for at least one year from date of shipping when stored at -20°C.

RefSeq: [NM\\_031305.1](#), [NP\\_112595.1](#)

RefSeq Size: 4593 bp

RefSeq ORF: 1968 bp

Locus ID: 83478

UniProt ID: [Q8N264](#)

Cytogenetics: 4q21.23-q21.3

Domains: RhoGAP

**Gene Summary:** This gene encodes a Rho-GTPase activating protein, which is specific for the small GTPase family member Rac. Binding of the encoded protein by filamin A targets it to sites of membrane protrusion, where it antagonizes Rac. This results in suppression of lamellae formation and promotion of retraction to regulate cell polarity. Alternative splicing results in multiple transcript variants. [provided by RefSeq, Sep 2016]