

Product datasheet for **RG214406**

CROP (LUC7L3) (NM_016424) Human Tagged ORF Clone

Product data:

Product Type:	Expression Plasmids
Product Name:	CROP (LUC7L3) (NM_016424) Human Tagged ORF Clone
Tag:	TurboGFP
Symbol:	CROP
Synonyms:	CRA; CREAP-1; CROP; hLuc7A; LUC7A; OA48-18
Mammalian Cell Selection:	Neomycin
Vector:	pCMV6-AC-GFP (PS100010)
E. coli Selection:	Ampicillin (100 ug/mL)
ORF Nucleotide Sequence:	>RG214406 representing NM_016424 Red=Cloning site Blue=ORF Green=Tags(s)

TTTTGTAATACGACTCACTATAGGGCGGCCGGAATTCGTCGACTGGATCCGGTACCGAGGAGATCTGCC
GCC**CGATCGCC**

ATGATTTTCGGCCGCGCAGTTGTTGGATGAGTTAATGGGCCGGGACCGAAACCTAGCCCCGGACGAGAAGC
GCAGCAACGTGCGGTGGGACCACGAGAGCGTTTGTAAATATTATCTCTGTGGTTTTGTCTCGCGAATT
GTTCAAAATACACGTTCTGATCTTGGTCCGTGTAAAAAATTCATGATGAAAATCTACGAAAACAGTAT
GAGAAGAGCTCTGTTTCATGAAAGTTGGCTATGAGAGAGATTTTTGCGATACTTACAGAGCTTACTTG
CAGAAGTAGAACGTAGGATCAGACGAGGCCATGCTCGTTTGGCATTATCTCAAACCAGCAGTCTTCTGG
GGCCGCTGGCCCAACAGGCAAAAATGAAGAAAAAATTCAGGTTCTAACAGACAAAATTGATGTACTTCTG
CAACAGATTGAAGAATTAGGGTCTGAAGAAAAAGTAGAAGAAGCCAGGGGATGATGAAATTAGTTGAGC
AATTAAGAAGAGAGAGAACTGCTAAGGTCCACAACGTCGACAATTGAAAGCTTTGCTGCACAAGAAAA
ACAAATGGAAAGTTTGTGAAGTATGTGGAGCCTTTTAAATAGTAGGAGATGCCAGTCCCAGGTAGATGAC
CATTTGATGGGAAAAACAACATGGGCTATGCCAAAATTAAGCTACTGTAGAAGAATTAAGAAGAAAGT
TAAGGAAAAGAACCAGAAGACCTGATCGTGATGAGCGTCTAAAAAGGAGAAGCAAGAAAGAGAAGAAAG
AGAAAAAGAACCGGAGAGAGAAAAGGGAAGAAAGAGAAAAGACGAAGGGAAGGAAGAAAGAGAA
AAAGAAAGGGCTCGTGACAGAGAAAGAAAGAAAGAAAGTTCGTTACGAAGTAGACACTCAAGCCGAACAT
CAGACAGAAGATGCAGCAGGTCTCGGGACCACAAAAGGTCACGAAGTAGAGAAAAGAGGGGAGCAGAAAG
TAGAGATCGACGAAGAAGCAGAAGCCATGATCGATCAGAAAAGAAAACACAGATCTCGAAGTCGGGATCGA
AGAAGATCAAAAAGCCGGGATCGAAAGTCATATAAGCACAGGAGCAAAAGTCGGGACAGAGAAACAAGATA
GAAAATCCAAGGAGAAAAGAAAGAGGGGATCTGATGATAAAAAAGTAGTGTGAAGTCCGGTAGTCGAGA
AAAGCAGAGTGAAGACACAACACTGAATCGAAGGAAAGTGAATAAGAATGAGGTCAATGGGACCAGT
GAAGACATTAATCTGAAGGTGACTCAGTCCAAT

ACGCGTACGCGGCCGCTCGAG - GFP Tag - GTTTAA



View online »

Protein Sequence: >RG214406 representing NM_016424
Red=Cloning site Green=Tags(s)

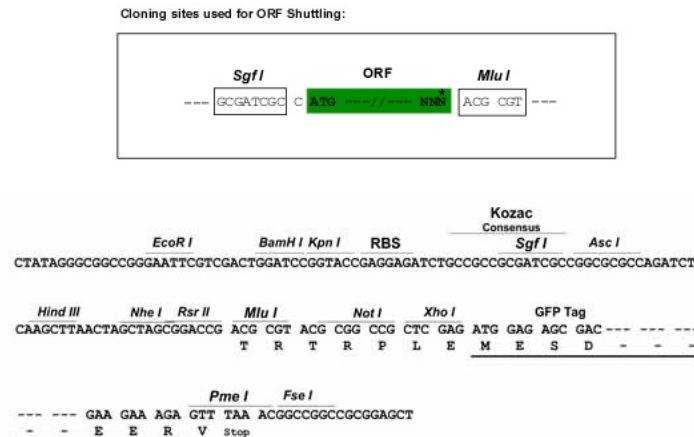
MISAAQLLDELMGRDRNLAPDEKRSNVRWDHESVCKYYLCGFCAELFTNTRSDLGPCEKIHDENLRKQY
 EKSSRFMKVGYERDFRLYLQSLLAEVERRIRRGHARLALSQNQSSGAAGPTGKNEEKIQVLTDKIDVLL
 QQIEELGSEGVVAAQGMMLVEQLKEERELLRSTTSTIESFAAQEKQMEVCEVCGAFLIVGDAQSRVDD
 HLMGKQHMGYAKIKATVEELKEKLRKRTEEPDRDERLKKKEQEREEREKEREREREERERKRREEEERE
 KERARDRERRRKRSRSRHSRSTSDRRCRSRSDHKRSRSRERRRRSRSDRRRSRSHDRSERKHSRSDR
 RRSKSRDRKSYKHSRSDREQDRKSKEKEKRGSDDKSSVKSGSREKQSEDNTTESKESDTKNEVNGTS
 EDIKSEGDTQSN

TRTRPLE – GFP Tag – V

Restriction Sites:

SgfI-MluI

Cloning Scheme:



ACCN: NM_016424

ORF Size: 1296 bp

OTI Disclaimer: The molecular sequence of this clone aligns with the gene accession number as a point of reference only. However, individual transcript sequences of the same gene can differ through naturally occurring variations (e.g. polymorphisms), each with its own valid existence. This clone is substantially in agreement with the reference, but a complete review of all prevailing variants is recommended prior to use. [More info](#)

OTI Annotation: This clone was engineered to express the complete ORF with an expression tag. Expression varies depending on the nature of the gene.

Components: The ORF clone is ion-exchange column purified and shipped in a 2D barcoded Matrix tube containing 10ug of transfection-ready, dried plasmid DNA (reconstitute with 100 ul of water).

Reconstitution Method:

1. Centrifuge at 5,000xg for 5min.
2. Carefully open the tube and add 100ul of sterile water to dissolve the DNA.
3. Close the tube and incubate for 10 minutes at room temperature.
4. Briefly vortex the tube and then do a quick spin (less than 5000xg) to concentrate the liquid at the bottom.
5. Store the suspended plasmid at -20°C. The DNA is stable for at least one year from date of shipping when stored at -20°C.

RefSeq: [NM_016424.5](#)

RefSeq Size: 3477 bp

RefSeq ORF: 1299 bp

Locus ID: 51747

UniProt ID: [O95232](#)

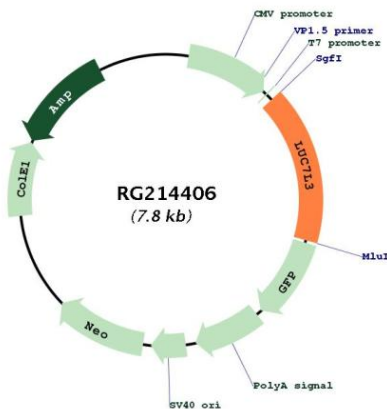
Cytogenetics: 17q21.33

Domains: DUF259

Protein Families: Stem cell - Pluripotency

Gene Summary: This gene encodes a protein with an N-terminal half that contains cysteine/histidine motifs and leucine zipper-like repeats, and the C-terminal half is rich in arginine and glutamate residues (RE domain) and arginine and serine residues (RS domain). This protein localizes with a speckled pattern in the nucleus, and could be involved in the formation of spliceosome via the RE and RS domains. Two alternatively spliced transcript variants encoding the same protein have been found for this gene. [provided by RefSeq, Aug 2009]

Product images:



Circular map for RG214406