

Product datasheet for **RG214404**

PPIL2 (NM_148176) Human Tagged ORF Clone

Product data:

| | |
|---------------------------|--|
| Product Type: | Expression Plasmids |
| Product Name: | PPIL2 (NM_148176) Human Tagged ORF Clone |
| Tag: | TurboGFP |
| Symbol: | PPIL2 |
| Synonyms: | CYC4; Cyp-60; CYP60; hCyP-60; UBOX7 |
| Mammalian Cell Selection: | Neomycin |
| Vector: | pCMV6-AC-GFP (PS100010) |
| E. coli Selection: | Ampicillin (100 ug/mL) |



[View online »](#)

ORF Nucleotide Sequence:

>RG214404 representing NM_148176
 Red=Cloning site Blue=ORF Green=Tags(s)

TTTTGTAATACGACTCACTATAGGGCGGCCGGAATTCGTCGACTGGATCCGGTACCGAGGAGATCTGCC
 GCC**CGCATCGCC**

ATGGGGAAGCGACAGCACCAAAAGGACAAAATGTACATTACCTGTGCTGAATACACTCACTTTTATGGTG
 GCAAGAAGCCAGATCTCCACAAAACAAATTTTCGTCGTTTACCTTTTGACCACTGCACTCTCTCTGCA
 GCCCTTTGTCTACCCAGTCTGCACTCCCGATGGCATCGTCTTTGACTTACTGAACATTGTTCCATGGCTT
 AAGAAGTACGGGACCAACCCAGCAATGGAGAGAAGCTGGACGGGAGTCCCTGATCAAGCTGAACCTTTT
 CCAAGAACAGTGAAGGGAAGTACCCTGCCAGTGTGTTACCGTGTTCACCAACAACCCACATCGT
 GGCTGTGAGGACGACCGCAACGCTACGCCTATGAGGCAGTGGAAACAGCTAAATATCAAGGCCAAGAAC
 TTCGGGACCTGTGACCGACGAGCCCTTCTCCCGGCAGGACATCATACCCTCCAGGACCCCACTAATT
 TGGACAAGTTCATGTCTCTAATTCTATCATGTGAAGAATAACATGAAAATAATAGACCCAGATGAAGA
 GAAGGCCAAACAGGACCCGTCTTATTATCTGAAAATAACAAATGCCGAGACCCGAGAGACCTGCAGGAG
 CTCTACAAGGAGTTCAAAGGGGACGAGATTCTGGCAGCCACCATGAAGGCCCCGGAGAAGAAGAAAGTGG
 ACAAGCTGAACGCTGCCACTATTCCACAGGGAAGGTCAGCGCTTCTTACCTCCACCGCGATGGTCCC
 GGAGACCACACATGAAGCAGTGCATCGACGAGGATGTGCTGCGCTACCAGTTTGTGAAGAAGAAGGGC
 TACGTGCGGTGCACACCAACAAGGGCGACCTCAACCTGGAGTGCCTGCGACCTGACACCAAAAACT
 GCGAAAACCTCATCAGGCTTTGCAAGAAGCATTATTACGATGGCACCATCTTCCACAGATCCATCCGGAA
 CTTTGTGATCAAAGGGGGCAGCCACAGGCACAGGCACGGGTGGGGAGTCATACTGGGGGAAGCCCTTC
 AAAGACGAGTTCGGGCCAACCTCTCGCACACGGGCCCGGCATCCTCAGCATGGCCAACCTCCGGGCCCA
 ACAGCAACAGGTCTCAATTCTTTCATCAGTTCCTGCTCCTGTGCCTACCTGGACAAGAAGCATACTCTT
 TGGACGGGTTGTTGGGGGCTTTGACGTACTGACAGCCATGGAGAATGTGGAGAGTGACCCCAAACTGAC
 CGCCCTAAGGAGGAGATCCGCATTGATGCCACTACAGTGTTCGTGGACCCCTATGAGGAGCCGATGCC
 AGATTGCGCAGGAGCGGAAGACACAGCTCAAGGTAGCCCGGAGACCAAAGTGAAGAGCAGCCAGCCCA
 GGCAGGGAGCCAGGGCCCCAGACCTTCCGCCAGGGCGTGGCAAGTACATCAACCCAGCAGCCACCGAG
 CAGCAGAGGAAGGCCCTCAACCAAGTGCCTGTCCCATGTCCAAGAAGAAGCCAGTCCGGGTTTTGG
 GGACTTCAGCTCCTGGTAGCAGCAGGCTGCCTGATGACCAC

ACGCGTACGCGGCCGCTCGAG – GFP Tag – GTTTAA

Protein Sequence:

>RG214404 representing NM_148176
 Red=Cloning site Green=Tags(s)

MGKRQHQQDKMYITCAEYTHFYGGKKPDLQTNFRRLPFDHCSLSLQPFVYVPVCTPDGIVFDLLNIVPWL
 KKYGTNPSNGEKLDRSLIKLNF SKNSEGKYHCPVLFVFTNNTHIVAVRTTGNVYAYEAVEQLNIKAKN
 FRDLLTDEPFSRQDIITLQDPTNLDKFNVS NFYHVKNMKIIDPDEEKAKQDPSYYLKNTNAETRETLQE
 LYKEFKGDEILAAATMKAPEKKKVDKLNAAHYSTGKVSASFSTAMVPETTHEAAAIDEDVLRYPVKKKG
 YVRLHTNKGDLNLELHCDLTPKTCENFIRLCKKHYYDGTIFHRSIRNFVIQGGDPTGTGTGGESYWGKPF
 KDEFRPNLSHTGRGILSMANSGPNSNRSQFFITFRSCAYLDKKHTIFGRVVGGFDVLTAMENVESDPKTD
 RPKEEIRIDATTVFVDPYEEADAQIAQERKTQLKVAPETKVKSSQPQAGSQGPQTFRQGVGKYINPAATE
 QQRKSPQPVPLSPCRRSPVGLGTSAPGSSRLPDDH

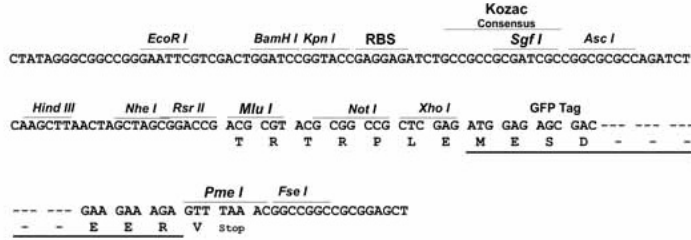
TRTRPLE – GFP Tag – V

Restriction Sites:

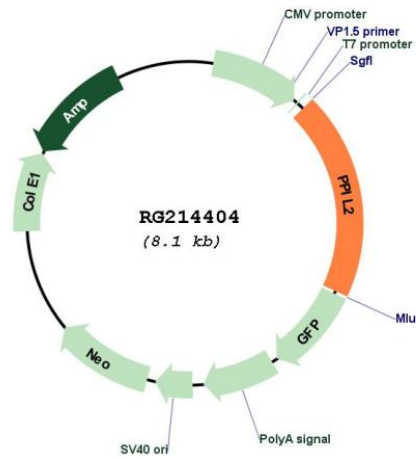
Sgfl-MluI

Cloning Scheme:

Cloning sites used for ORF Shutting:



Plasmid Map:



| | |
|-------------------------------|---|
| ACCN: | NM_148176 |
| ORF Size: | 1581 bp |
| OTI Disclaimer: | The molecular sequence of this clone aligns with the gene accession number as a point of reference only. However, individual transcript sequences of the same gene can differ through naturally occurring variations (e.g. polymorphisms), each with its own valid existence. This clone is substantially in agreement with the reference, but a complete review of all prevailing variants is recommended prior to use. More info |
| OTI Annotation: | This clone was engineered to express the complete ORF with an expression tag. Expression varies depending on the nature of the gene. |
| Components: | The ORF clone is ion-exchange column purified and shipped in a 2D barcoded Matrix tube containing 10ug of transfection-ready, dried plasmid DNA (reconstitute with 100 ul of water). |
| Reconstitution Method: | <ol style="list-style-type: none">1. Centrifuge at 5,000xg for 5min.2. Carefully open the tube and add 100ul of sterile water to dissolve the DNA.3. Close the tube and incubate for 10 minutes at room temperature.4. Briefly vortex the tube and then do a quick spin (less than 5000xg) to concentrate the liquid at the bottom.5. Store the suspended plasmid at -20°C. The DNA is stable for at least one year from date of shipping when stored at -20°C. |
| RefSeq: | NM_148176.2 , NP_680481.1 |
| RefSeq Size: | 2736 bp |
| RefSeq ORF: | 1584 bp |
| Locus ID: | 23759 |
| UniProt ID: | Q13356 |
| Cytogenetics: | 22q11.21 |
| Domains: | pro_isomerase |
| Protein Families: | Druggable Genome |
| Protein Pathways: | Ubiquitin mediated proteolysis |
| Gene Summary: | This gene is a member of the cyclophilin family of peptidylprolyl isomerases. The cyclophilins are a highly conserved ubiquitous family, members of which play an important role in protein folding, immunosuppression by cyclosporin A, and infection of HIV-1 virions. This protein interacts with the proteinase inhibitor eglin c and is localized in the nucleus. Alternatively spliced transcript variants have been found for this gene. [provided by RefSeq, Dec 2015] |