

Product datasheet for **RG214346**

HCCS (NM_005333) Human Tagged ORF Clone

Product data:

Product Type: Expression Plasmids
Product Name: HCCS (NM_005333) Human Tagged ORF Clone
Tag: TurboGFP
Symbol: HCCS
Synonyms: CCHL; LSDMCA1; MCOPS7; MLS
Mammalian Cell Selection: Neomycin
Vector: pCMV6-AC-GFP (PS100010)
E. coli Selection: Ampicillin (100 ug/mL)
ORF Nucleotide Sequence: >RG214346 representing NM_005333
Red=Cloning site Blue=ORF Green=Tags(s)

TTTTGTAATACGACTCACTATAGGGCGGCCGGAATTCGTCGACTGGATCCGGTACCGAGGAGATCTGCC
GCC**CGATCGCC**

ATGGGTTTGTCTCCATCTGCTCCTGCTGTTGCAGTTCAGGCCTCAAATGCTTCAGCGTCCCCACCTTCAG
GATGCCCGATGCATGAAGGGAAAATGAAAGGCTGTCCAGTGAATACAGAGCCATCTGGCCCAACCTGTGA
GAAGAAAACATACTCTGTGCCTGCCACCAGGAACCGCCTATGAGTACGTGGAGTGTCCATTAGGGGC
ACTGCGGCTGAGAATAAGGAGAACCTAGATCCTCAAATCTGATGCCACCACAAATCAAACACCAGCTC
CAGATCAGCCATTTGCATTGTCTACTGTCAGAGAAGAGTCATCCATTCCGAGAGCAGATTCAGAGAAAA
GTGGGTTTACCCTTCTGAGCAGATGTTCTGGAATGCAATGTTAAAGAAAGGGTGAAGTGAAGGATGAG
GATATCAGTCAGAAGGATATGTATAATATCATTAGAATTCACAATCAGAATAACGAGCAGGCTTGAAGG
AGATTTTGAAGTGGGAAGCCCTTCATGCTGCAGAGTGTCTTGTGGTCCATCATTGATCCGGTTTGGAGG
GAAAGCAAAGAGTATTCACCAAGGGCACGAATTCGTTCTGGATGGGGTATGAGTTGCCTTTTATAGG
CACGATTGGATCATAAACCGTTGCGGGACAGAAGTTAGATATGTGATTGATTATTATGATGGTGGTGAAG
TCAACAAGGACTACCAGTTCACCATCCTGGACGTCGCTCCTGCCTTAGATTCACCTTCGGCAGTATGGGA
CAGAATGAAAGTCGCTTGGTGGCGTTGGACCTCG

ACGCGTACGCGGCCGCTCGAG - GFP Tag - GTTTAA



[View online »](#)

Protein Sequence: >RG214346 representing NM_005333
 Red=Cloning site Green=Tags(s)

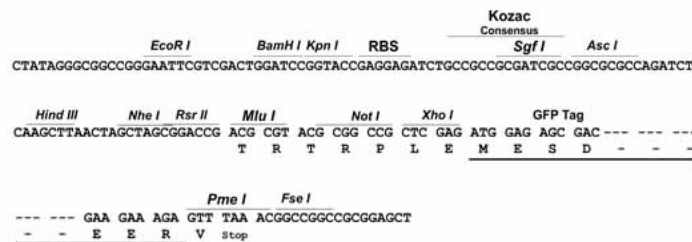
MGLSPSAPAVAVQASNASASPPSGCPMHEGKMKGCPVNTPEPSGPTCEKKTYSVPAHQERAYEYVECP
 IRTAAENKENDPSNLMPPPNQTPAPDQPFALSTVREESSIPRADSEKKWVYPSEQMFWNAMLKKGW
 KWKDEDISQKDMYNIIRIHNQNEQAWKEILKWEALHAAECPCGPSLIRFGGKAKEYSPRARIRIS
 WMGYELPFDRHDWIINRCGTEVRYVIDYYDGGEVNKDYQFTILDVRPALDSLAVWDRMKVAWWRWTS

TRTRPLE - GFP Tag - V

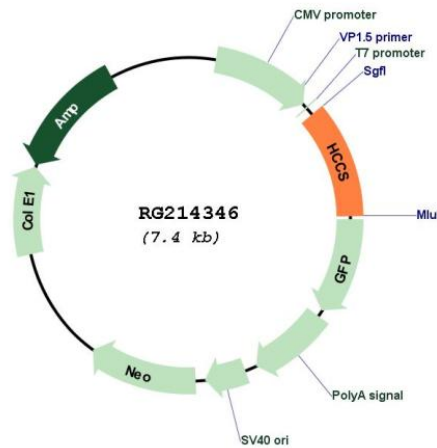
Restriction Sites: SgfI-MluI

Cloning Scheme:

Cloning sites used for ORF Shutting:



Plasmid Map:



ACCN: NM_005333

ORF Size: 804 bp

OTI Disclaimer:	The molecular sequence of this clone aligns with the gene accession number as a point of reference only. However, individual transcript sequences of the same gene can differ through naturally occurring variations (e.g. polymorphisms), each with its own valid existence. This clone is substantially in agreement with the reference, but a complete review of all prevailing variants is recommended prior to use. More info
OTI Annotation:	This clone was engineered to express the complete ORF with an expression tag. Expression varies depending on the nature of the gene.
Components:	The ORF clone is ion-exchange column purified and shipped in a 2D barcoded Matrix tube containing 10ug of transfection-ready, dried plasmid DNA (reconstitute with 100 ul of water).
Reconstitution Method:	<ol style="list-style-type: none">1. Centrifuge at 5,000xg for 5min.2. Carefully open the tube and add 100ul of sterile water to dissolve the DNA.3. Close the tube and incubate for 10 minutes at room temperature.4. Briefly vortex the tube and then do a quick spin (less than 5000xg) to concentrate the liquid at the bottom.5. Store the suspended plasmid at -20°C. The DNA is stable for at least one year from date of shipping when stored at -20°C.
RefSeq:	NM_005333.5
RefSeq Size:	2365 bp
RefSeq ORF:	807 bp
Locus ID:	3052
UniProt ID:	P53701
Cytogenetics:	Xp22.2
Domains:	Cyto_heme_lyase
Protein Pathways:	Porphyrin and chlorophyll metabolism
Gene Summary:	The protein encoded by this gene is an enzyme that covalently links a heme group to the apoprotein of cytochrome c. Defects in this gene are a cause of microphthalmia syndromic type 7 (MCOPS7). Three transcript variants encoding the same protein have been found for this gene. [provided by RefSeq, Jan 2010]