

## Product datasheet for **RG214320**

### hnRNP U (HNRNPU) (NM\_031844) Human Tagged ORF Clone

#### Product data:

Product Type:	Expression Plasmids
Product Name:	hnRNP U (HNRNPU) (NM_031844) Human Tagged ORF Clone
Tag:	TurboGFP
Symbol:	HNRNPU
Synonyms:	DEE54; EIEE54; GRIP120; hnRNP U; HNRNPU-AS1; HNRPU; pp120; SAF-A; SAFA; U21.1
Mammalian Cell Selection:	Neomycin
Vector:	pCMV6-AC-GFP (PS100010)
E. coli Selection:	Ampicillin (100 ug/mL)



[View online »](#)

**ORF Nucleotide Sequence:**

>RG214320 representing NM\_031844  
 Red=Cloning site Blue=ORF Green=Tags(s)

TTTTGTAATACGACTCACTATAGGGCGGCCGGGAATTCGTCGACTGGATCCGGTACCGAGGAGATCTGCC  
 GCC**CGCATCGCC**

ATGAGTTCCTCGCCTGTTAATGTAAAAAGCTGAAGGTGTCGGAGCTGAAAGAGGAGCTCAAGAAGCGAC  
 GCCTTCTGACAAGGGTCTCAAGGCCGAGCTCATGGAGCGACTCCAGGCTGCGCTGGACGACGAGGAGGC  
 CGGGGGCCGCCCGCCATGGAGCCCGGAACGGCAGCCTAGACCTGGGCGGGGATTCCGCTGGGCGCTCG  
 GGAGCAGGCTCGAGCAGGAGGCCGCGGCCGGCGCATGAAGAGGAGGAGGAAGAGGAAGAGGAGGAGG  
 AAGGAATCTCCGCTCTGGACGGCAGCAGATGGAGCTAGGAGAGGAGAACGGGGCCGCGGGGCGCCGA  
 CTCGGGCCGATGGAGGAGGAGGAGGCCCTCGGAAGACGAGAACGGCAGCAGATCAGGGTTTCCAGGAA  
 GGGGAAGATGAGCTCGGGGACGAAGAGGAAGGCGCGGGCAGGAGAACGGGCACGGGGAGCAGCAGCCTC  
 AACCGCCGGCAGCAGCAGCAACAGCCCAACAGCAGCGGGGCCGCCAAGGAGGCCGCGGGGAAGAG  
 CAGCGGCCACCTCGCTGTTCCGGGTGACGGTGGCGCCCGCCGGGGCAGGCAGGGCCAGCAGCAGGCG  
 GGAGGTAAAGAAGAGGCCGAAGGCGGGAGGCGCGGTGCGCCCGGGGCTCCGGCGGGGGGACGGCA  
 AAACAGAACAGAAAGGCCGAGATAAAAAGAGGGGTGTTAAAAGACCACGAGAAGATCATGGCCGTGGATA  
 TTTTGAGTACATTGAAGAGAACAAGTATAGCAGAGCCAAATCTCCTCAGCCACCTGTTGAAGAAGAAGAT  
 GAACACTTCGATGACACAGTGGTTTGTCTTGATACTTATAATTGTGATCTACATTTTAAAATATCAAGAG  
 ATCGTCTCAGTGTCTCTCCCTTACAATGGAGAGTTTTGCTTTTCTTTGGGCTGGAGGAAGGCATCCTA  
 TGGTGTGTCAAAAGGCAAAGTGTGTTTTGAGATGAAGTTACAGAGAAGATCCCAGTAAGGCATTTATAT  
 ACAAAGATATTGACATACATGAAGTTCGATTGGCTGGTCACTAACTACAAGTGAATGTTACTTGGTG  
 AAAAAAGTTTTGATGAAAATGATGTGATTACATGTTTTGCTAACTTTGAAAGTGATGAAGTAGAACTCTCG  
 TATGCTAAGAATGGACAAGATCTTGGCGTTGCCTTCAAAATCAGTAAGGAAGTTCTTGTGACGGCCAC  
 GTTCCCGCATGTTCTCTGCCACAACGTGCGAGTTGAATTTAATTTTGGTGAAGGAAAAGCCATATTT  
 TCCAATACCTGAAGAGTATACTTTCATCCAGAACGTCCCCTTAGAGGATCGAGTTAGAGGACCAAAGGG  
 CCTGAAGAGAAGAAAGATTGTGAAGTTGTGATGATGATTGGCTTGCAGGAGCTGAAAAACTACCTGGG  
 TTAATAACATGCAGCAGAAAAATCCAGGAAAATAAACATTCTTGGCACAATACTATTATGGATAAGAT  
 GATGGTGGCAGGTTTTAAGAAGCAAATGGCAGATACTGGAAAACGAACACTGTTGCAGAGAGCCCCC  
 CAGTGTCTTGGGAAATTTATTGAGATTGCTGCCGAAAGAAGCGAAATTTTATTCTGGATCAGACAATG  
 TGTCTGCTGCTGCCAGAGGAGAAAAATGTGCCTGTTTGCAGGCTTCCAGCGAAAAGCTGTTGTAGTTTG  
 CCCAAAAGATGAAGACTATAAGCAAAGAACACAGAAGAAAGCAGAAGTAGAGGGGAAAGACCTACCAGAA  
 CATGCGGTCTCAAAATGAAAGGAAACTTTACCCTCCCAGAGGTAGCTGAGTGTCTTGTGAAAATAACCT  
 ATGTTGAACTTCAGAAGGAAGAGCCCAAAACTCTTGGAGCAATATAAGGAAGAAAGCAAAAAGGCTCT  
 TCCACCAGAAAAGAAACAGAACTGGCTCAAAGAAAAGCAATAAAAATAAGAGTGGCAAGAACCAGTTT  
 AACAGAGGTGGTGGCCATAGAGGACGTGGAGGATTCATATGCGTGGTGGAAATTCAGAGGAGGAGCCC  
 CTGGGAATCGTGGCGGATATAATAGGAGGGCAACATGCCACAGAGAGGTGGTGGCGGTGGAGGAAGTG  
 TGAATCGGCTATCCATACCCTCGTCCCTGTTTTTCTGGCCGTGGTAGTTACTCAAACAGAGGGGAAC  
 TACAACAGAGGTGGAATGCCAACAGAGGGAACATAACCAAGAACTTCAGAGGACGAGGAAACAATCGTG  
 GCTACAAAAATCAATCTCAGGGCTACAACCAGTGGCAGCAGGGTCAATTCTGGGGTGAAGCCATGGAG  
 TCAGCATTATACCAAGGATATTAT

**ACCGTACGCGGCCGCTCGAG** - GFP Tag - GTTTAA

**Protein Sequence:**

>RG214320 representing NM\_031844  
 Red=Cloning site Green=Tags(s)

```
MSSSPVNVKLLKVSSELKEELKRRRLSDKGLKAELMERLQAALDDEEAGGRPAMEPGNGSLDLGGDSAGRS
GAGLEQEAAGGDEEEEEEEEEEGISALDGDQMELGEENGAAGAADSGPMEEEEAAASEDENGDDQGFQE
GEDELGDEEEGAGDENGHGEQQPPATQQQQPQQQRGAKEAAGKSSGPTSLFAVTVAPPGARQQGQQQA
GGKKKAEGGGGGGRPGAPAAAGDGKTEQKGGDKKRGVCRPREDHGRGYFEYIEENKYSRAKSPQPPVEEED
EHFDDTVVCLDTYNCDLHFKISRDLSSASLTMESFAFLWAGGRASYGVSKGKVCFEMKVTEKIPVRHLY
TKDIDIHEVRIGWLSLTTSGMLLGEEFSGYSLKGIKTCNCETEDYGEKFDENDVITCFANFESDEVELS
YAKNGQDLGVAFKISKEVLAGRPLFPHVLCHNCAVEFNFGQKEKPYFPIPEEYTFIQNVPLEDRVRGPKG
PEEKKDCEVMMIGLPGAGKTTWVTKHAAENPGKYNILGTNTIMDKMMVAGFKQMADTGKLNLLQRAP
QCLGKFIEIAARKKRNFI LDQTNVSAQAQRKMCLEFAGFQRKAVVCPKDEDYKQRTQKKAEEVEGKDLPE
HAVLKMKGNTLPEVAECFDEITYVELQKEEAQKLLLEQYKEESKKALPPEKKQNTGSKKSNKNKSGKNQF
NRGGGHRGRGGFNMRGGNFRGGAPGNRGGYNRRGNMPQRGGGGGGSGGIGYPYPRAPVFPGRGSYSNRGN
YNRGGMPNRGNYNQNRGRGNRRGYKNQSQGYNQWQQGFQWQKPSQHYHQGY
```

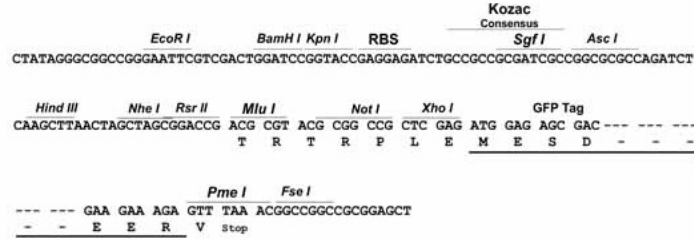
TRTRPLE - GFP Tag - V

**Restriction Sites:**

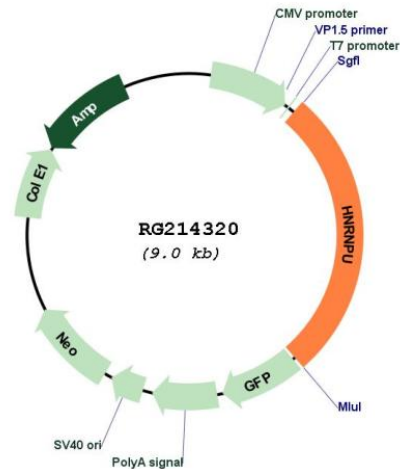
Sgfl-MluI

## Cloning Scheme:

Cloning sites used for ORF Shutting:



## Plasmid Map:



ACCN: NM\_031844

ORF Size: 2475 bp

OTI Disclaimer: The molecular sequence of this clone aligns with the gene accession number as a point of reference only. However, individual transcript sequences of the same gene can differ through naturally occurring variations (e.g. polymorphisms), each with its own valid existence. This clone is substantially in agreement with the reference, but a complete review of all prevailing variants is recommended prior to use. [More info](#)

OTI Annotation: This clone was engineered to express the complete ORF with an expression tag. Expression varies depending on the nature of the gene.

Components: The ORF clone is ion-exchange column purified and shipped in a 2D barcoded Matrix tube containing 10ug of transfection-ready, dried plasmid DNA (reconstitute with 100 ul of water).

Reconstitution Method:

1. Centrifuge at 5,000xg for 5min.
2. Carefully open the tube and add 100ul of sterile water to dissolve the DNA.
3. Close the tube and incubate for 10 minutes at room temperature.
4. Briefly vortex the tube and then do a quick spin (less than 5000xg) to concentrate the liquid at the bottom.
5. Store the suspended plasmid at -20°C. The DNA is stable for at least one year from date of shipping when stored at -20°C.

RefSeq: [NM\\_031844.3](#)

RefSeq Size: 6846 bp

RefSeq ORF: 2478 bp

Locus ID: 3192

UniProt ID: [Q00839](#)

**Cytogenetics:** 1q44

**Domains:** SAP, SPRY

**Protein Families:** Druggable Genome

**Protein Pathways:** Spliceosome

**Gene Summary:** This gene encodes a member of a family of proteins that bind nucleic acids and function in the formation of ribonucleoprotein complexes in the nucleus with heterogeneous nuclear RNA (hnRNA). The encoded protein has affinity for both RNA and DNA, and binds scaffold-attached region (SAR) DNA. Mutations in this gene have been associated with epileptic encephalopathy, early infantile, 54. A pseudogene of this gene has been identified on chromosome 14. [provided by RefSeq, Jun 2017]