

## Product datasheet for **RG214298**

### TM6SF2 (NM\_001001524) Human Tagged ORF Clone

#### Product data:

Product Type:	Expression Plasmids
Product Name:	TM6SF2 (NM_001001524) Human Tagged ORF Clone
Tag:	TurboGFP
Symbol:	TM6SF2
Mammalian Cell Selection:	Neomycin
Vector:	pCMV6-AC-GFP (PS100010)
E. coli Selection:	Ampicillin (100 ug/mL)
ORF Nucleotide Sequence:	>RG214298 representing NM_001001524 Red=Cloning site Blue=ORF Green=Tags(s)

TTTTGTAATACGACTCACTATAGGGCGGCCGGAATTCGTCGACTGGATCCGGTACCGAGGAGATCTGCC  
GCC**CGATCGCC**

ATGGACATCCCGCCGCTGGCCGGCAAGATCGCGGCGCTGTCGCTGAGCGCCCTCCCGGTGTCCTACGCGC  
TCAACCACGTCTCGGCGCTCTCGACCCCTGTGGGTGGCATTGATGAGCGCCCTAATCCTGGGTCTGCT  
TTTCGTGGCGGTCTACAGCTTGTCCCATGGCGAGGTCTCCTATGACCCACTCTATGCTGTCTTCGCTGTC  
TTCGCCTTCACCTCGGTTGTGGACCTCATCATCGCTCTTCAGGAAGACAGCTATGTGGTGGGCTTCATGG  
AGTTCTACACCAAGGAGGGAGACCATACTGCGCACAGCGCACGGAGTCTTCATCTGCTACTGGGATGG  
CACTGTTCACTACCTCCTCTACCTGGCCATGGCCGGCGCCATCTGCAGAAGGAAGAGATACCGGAATTTT  
GGACTCTACTGGCTGGGTTCTTCGCCATGAGCATCCTGGTGTTCCTTACAGAAACATTCTTGCAAAAT  
ACAGCTCCGAGATCAGGCCTGCCTTCTCCTCACCATCCCCTACCTGCTGGTGCCATGCTGGGCTGGCAT  
GAAGGTCTTCAGCCAGCCCCGGGCGCTAACCCGCTGCACCGCCAACATGGTGCAAGAGGAACAAAGAAA  
GGACTCCTGCAGCGTCCGGCTGACCTGGCCCTTGCATATATCTCATCCTTGCTGGCTTCTTCACTCTGT  
TCCGGGGCCTGGTGGTGTGATTGCCCCACAGATGCCTGCTTTGTCTATATCTACCAGTATGAGCCATA  
CCTGCGGGACCCTGTGGCTACCCTAAGGTGCAGATGCTGATGTACATGTTTTATGCTCCTGCCTTCTGCG  
GGCCTGGCTGCCTATGCTCTCACCTTCCCTGGTTGCTCCTGGCTCCAGACTGGGCCTTGGTGTGCTG  
GAGGCATCGGCCAGGCACAGTTCTCGCACATGGGGGCTTCCATGCACCTGCGCACACCCTTCACCTACCG  
TGTGCCTGAGGACACCTGGGGCTGCTTCTCGTGTGCAATCTGCTGTATGCGCTGGGCCCCACCTGCTG  
GCCTACCGTTGCCTTCAGTGGCCCGCATTCTTCCACCAGCCACCACCCTCCGACCCCTAGCCCTCCACA  
AGAAGCAGCAT

AGCGGACCGACGCGTACGCGGCCGCTCGAG - GFP Tag - GTTTAA



[View online »](#)

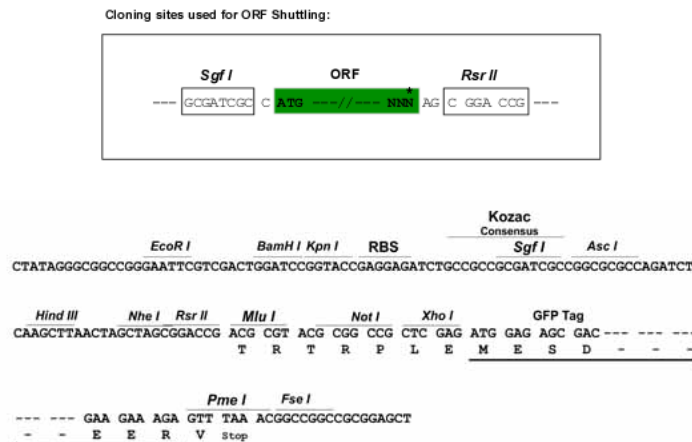
**Protein Sequence:** >RG214298 representing NM\_001001524  
Red=Cloning site Green=Tags(s)

MDIPPLAGKIAALSLSALPVSYALNHVSALSHPLWVALMSALILGLLFVAVVYSLSHGEVSYDPLYAVFAV  
 FAFTSVVDLIIALQEDSYVVGMEFYTKEGEPYLRTAHGVFICYWDGTVHYLLYLAMAGAI~~CR~~RKYRNF  
 GLYLWLSGFAMSILVFLTGNILGKYSSEIRPAFFLTIPYLLVPCWAGMKVFSQPRALTRCTANMVQEEQRK  
 GLLQRPADLALVIYLILAGFFTLFRGLVVLDCPTDACFVYIYQYEPYLRDPVAYPKVQMLMYMFYVLPFC  
 GLAAYALTFPGCSWLPDWALVFAGGIGQAQF SHMGASMHRLRTPFTYRVPEDTWGCFVFCNLLYALGPHLL  
 AYRCLQWPAFFHQPPSPDPLALHKKQH

SGPTRRRLE - GFP Tag - V

**Restriction Sites:** SgfI-RsrII

**Cloning Scheme:**



**ACCN:** NM\_001001524

**ORF Size:** 1131 bp

**OTI Disclaimer:** The molecular sequence of this clone aligns with the gene accession number as a point of reference only. However, individual transcript sequences of the same gene can differ through naturally occurring variations (e.g. polymorphisms), each with its own valid existence. This clone is substantially in agreement with the reference, but a complete review of all prevailing variants is recommended prior to use. [More info](#)

**OTI Annotation:** This clone was engineered to express the complete ORF with an expression tag. Expression varies depending on the nature of the gene.

**Components:** The ORF clone is ion-exchange column purified and shipped in a 2D barcoded Matrix tube containing 10ug of transfection-ready, dried plasmid DNA (reconstitute with 100 ul of water).

**Reconstitution Method:**

1. Centrifuge at 5,000xg for 5min.
2. Carefully open the tube and add 100ul of sterile water to dissolve the DNA.
3. Close the tube and incubate for 10 minutes at room temperature.
4. Briefly vortex the tube and then do a quick spin (less than 5000xg) to concentrate the liquid at the bottom.
5. Store the suspended plasmid at -20°C. The DNA is stable for at least one year from date of shipping when stored at -20°C.

**RefSeq:** [NM\\_001001524.3](#)

**RefSeq Size:** 1483 bp

**RefSeq ORF:** 1134 bp

**Locus ID:** 53345

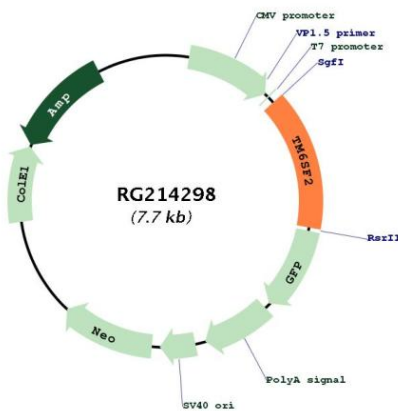
**UniProt ID:** [Q9BZW4](#)

**Cytogenetics:** 19p13.11

**Protein Families:** Transmembrane

**Gene Summary:** Regulator of liver fat metabolism influencing triglyceride secretion and hepatic lipid droplet content (PubMed:24531328, PubMed:24927523). May function as sterol isomerase (PubMed:25566323).[UniProtKB/Swiss-Prot Function]

### Product images:



Circular map for RG214298