

## Product datasheet for **RG214288**

### SRGAP3 (NM\_014850) Human Tagged ORF Clone

#### Product data:

Product Type:	Expression Plasmids
Product Name:	SRGAP3 (NM_014850) Human Tagged ORF Clone
Tag:	TurboGFP
Symbol:	SRGAP3
Synonyms:	ARHGAP14; MEGAP; SRGAP2; WRP
Mammalian Cell Selection:	Neomycin
Vector:	pCMV6-AC-GFP (PS100010)
E. coli Selection:	Ampicillin (100 ug/mL)
ORF Nucleotide Sequence:	>RG214288 representing NM_014850 Red=Cloning site Blue=ORF Green=Tags(s)

TTTTGTAATACGACTCACTATAGGGCGGCCGGAATTCGTCGACTGGATCCGGTACCGAGGAGATCTGCC  
GCC**CGATCGCC**

ATGTCATCTCAAACAAAGTTCAAGAAAGACAAAGAGATCATTGCTGAATATGAAGCCAAATAAAAGAGA  
TCCGCACGCAGCTGGTGGAGCAGTTCAAATGTCTGGAGCAGCAATCAGAGTCGCGACTGCAGCTGCTTCA  
AGACCTCCAGGAGTTTTCCGCCGGAAGCTGAGATTGAGCTCGAGTACTCCCGCAGCCTGGAGAAGCTG  
GCTGAGCGCTTCTCTCCAAAATCCGCAGCTCCCGGGAGCACCAGTTCAAGAAGGACCAGTACCTCTCT  
CGCTGTGAAGTGTGGTATCTGGTCTGCATCAGACCCGGCGGAGAGCCGAGACCATGCCACCCTCAA  
TGACATCTTCATGAACAATGTCATCGTCCGCCTCTCCAGATCAGTGAGGATGTCATCAGACTCTTCAA  
AAGAGCAAGGAGATTGGCCTGCAGATGCACGAGGAGCTCCTGAAGGTGACCAATGAGCTCTACACAGTCA  
TGAAAACCTACCACATGTACCATGCAGAGAGCATCAGTGCAGAAAGCAAGCTGAAGGAGGCTGAGAAGCA  
GGAGGAGAAGCAGTTCAATAAGTCAGGAGACCTCAGCATGAACCTGCTCCGGCAGCAGGACCCGCCAG  
CGCCGCAGCTCTGTGAAGAAGATTGAGAAGATGAAGGAGAAGAGGAGGCAAGTACTCTGAGAACAAGC  
TGAAATGCACAAAGGCCGGAATGACTACTTGTCAATCTGGCAGCCACCAACGCAGCTATAAGCAAATA  
CTACATCCATGATGTCTGTGATCTGATCGATTGCTGTGATTTGGCTTCCATGCCAGCCTGGCCCCCACC  
TTCCGGACCTATCTCAGCTGAATAACAACCTGGAGACCTCTGCCACGAAGGGCTGGATGTCATTGAGA  
ATGCAGTGGACAACCTGGATCCCGAAGTGACAAGCACACAGTCATGGACATGTGCAATCAAGTCTTCTG  
CCCTCCACTCAAGTTCGAGTTCAGCCCCACATGGGGGATGAGGTCTGCCAGGTACGCGCTCAGCAGCCC  
GTCCAGACAGAAGTCTCATGCGTTATCACCAGCTGCAGTCCAGACTGGCCACCCTCAAGATAGAGAATG  
AGGAGGTTAGGAAAACCTGGATGCCACCATGCAGACATTACAGGACATGCTGACTGTGGAGGACTTTGA  
TGTCTCCGATGCCTTCCAACACAGTCGATCGACAGAGTCCGTCAAGTCGGCTGCCTCTGAGACCTACATG  
AGCAAGATCAACATTGCCAAGAGGAGAGCAACCAGCAGGAAACAGAAATGTTTTATTTACAAAATTTA  
AAGAGTATGTGAATGGCAGTAACCTCATACCAAGCTGCAGGCCAAGCACGATTTACTCAAGCAGACCT  
GGCGAAGGGGAAAGAGCAGAATGCGGCACCACCAGGCCCCCTGTCTTCCCCTAAACCACAGAAAATG



[View online »](#)

AGGAGACCTAGGCCTCTCTCAGTGTATAGCCATAAACTCTTTAACGGCAGTATGGAAGCATTCAATTAAGG  
 ATTCAGGACAAGCTATACCGCTTGTAGTCGAGAGCTGCATCCGTTACATCAATTTATATGGACTCCAGCA  
 GCAGGGGATCTTCAGAGTGCCAGGATCTCAGGTGGAAGTCAATGCATCAAAAATTCCTTTGAGAGAGGT  
 GAAGACCCCTTGTGGACGATCAAAATGAACGAGATATCAATTCAGTCGCTGGTGTTTTAAACTGTATT  
 TCCGAGGACTGAAAAACCACTCTTCTAAGGAAAGTTTCAAGATTTGATATCTACTATTAACCTGGA  
 GAACCCAGCCGAGAGGGTGCACCAGATCCAACAAATCCTCGTACCCTTCCCCCGTGGTCAATTGGTGC  
 ATGAGATACCTCTTCGCTTTCCTCAACCACTCTCCCAGTATAGCGACGAGAACATGATGGATCCCTACA  
 ACCTGGCCATCTGCTTCGGGCTACCCTCATGCACATCCCTGATGGGCAGGACCCTGTGTCTGCCAGGC  
 ACACATCAATGAAGTCATCAAAACCATCATCATCCATCATGAAGCCATCTTCCCCAGCCCCGGGAGCTA  
 GAGGGACCTGTGTATAAAAATGCATGGCTGGAGGGGAAGAATATTGTGACAGCCACACAGCGAGCCAG  
 GGGCCATCGATGAAGTTGACCATGACAATGGCACTGAGCCTCATACCAGCGATGAAGAAGTGAGCAGAT  
 CGAGGCTATTGCCAAGTTTGACTACATGGGGCGTCCCCGCTGAGCTATCCTTCAAGAAGGGGGCTCG  
 CTGCTCTGTACCACCGCCTCGGAGGACTGGTGGGAGGGCCGGCACACGGCGTGGATGGACTCATCC  
 CCCATCAGTACATAGTTGTACAGGACATGGATGATGCCTTCTCCGACAGCCTGAGCCAGAAGGCTGACAG  
 CGAGGCCAGCAGTGGCCATTGTGGATGACAAGGCCTTCCAAAAACGACCTCCAGTCCCCACGGAG  
 CACATCTCGGATTACGGCTTGGGGGGTGGATGGGCCAGTGCCTTACGATCTGATGGAGCAGCCATCC  
 CCAGACGCCGAAGCGGGGGCAGACACACAGCCCGCCCGGGGCTGGGCCCCAGCATAGACACACCACC  
 CCGGGTCTGCTGCCCGCCAGCAGCCCCACAAAATCCCCTCACCCGGGGAGGATCGAGAGCCCTGAG  
 AAGCGGAGGATGGCGACGTTTCGGGAGCGCTGGCAGCATCAACTACCCTGACAAGAAGGCGCTCTCCGAAG  
 GGCACCTCGATGAGGTGACCTGCGGTTCCACCAGGCACAGCAGCCTAGGGGACCACAAGTCCCTGGAGGC  
 CGAGGCCCTGGCAGAAGACATCGAGAAGACCATGAGCAGCGCTCTGCACGAGTTGCGGAACTCGAGAGG  
 CAGAACACGGTCAAGCAGCGCCAGATGTGGTCTGGACACCTTGAGGCCCTGAAGAACCCGCCAGGCC  
 CCGTCAGCTCGGAGCCCGCAGTCCCCTCACACCATCGTCAACCCGACCCCGATGCCCATGCGCCG  
 CAGCAGCAGTCTCCACCGAGATGATGACCACCTTCAAGCAGCCCTGTCCGCCGCTGGCTGGCGCC  
 CAGCTCCGCCCGCCCCATGCGGCCGTGCGGCCGTGGTCCAGCACCGGTCCAGCAGCAGCAGCAGCT  
 CGGGCGTGGGAGCCCGCCGTGACGCCACCGAGAAGATGTTCCCAACAGCTCAGCGACAAGTCGGG  
 CACCATG

ACGCGTACGCGGCCGCTCGAG – GFP Tag – GTTTAA

**Protein Sequence:**

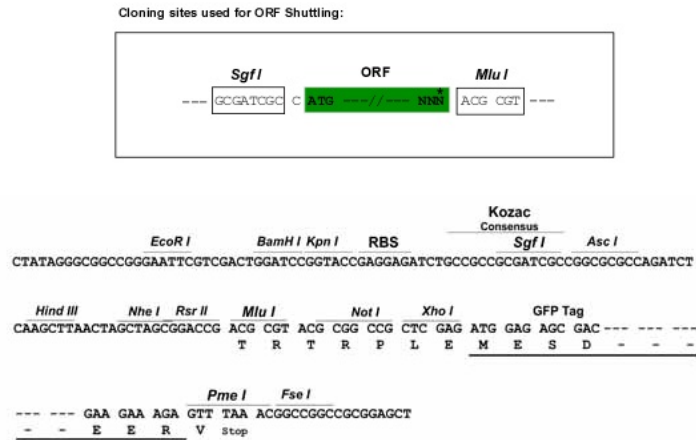
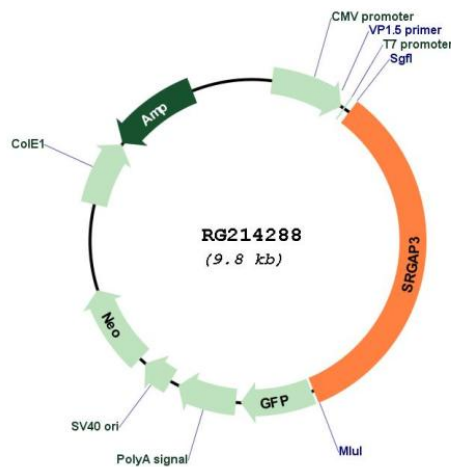
>RG214288 representing NM\_014850  
 Red=Cloning site Green=Tags(s)

MSSQTKFKKDKKEIIAEYEAQIKEIRTQLVEQFKCLEQQSESRLQLLQDLQEFFRRKAEIELEYSRSLEKL  
 AERFSSKIRSSREHQFKKDQYLLSPVNCWYLVLHQTRRESRDHATLNDIFMNNVIVRLSQISEDVIRL FK  
 KSKEIGLQMHEELLKVTNELYVMKTYHMYHAESISAESKLKEAEKQEEKQFNKSGDLSMNL RHEDRPQ  
 RRSSVKKIEKMKEKRQAKYSENKLCCTKARNDYLLNLAATNAAISKYYIHDVSDLIDCCDLGFHASLART  
 FRTYL SAEYNLETSRHEGLDVIENAVDNLDSRSDKHTVMDMCNQVFCPPLKFEFQPHMGDEVQVSAQQP  
 VQTELLMRYHQLQSRLATLKIENEEVRKTL DATMQTLQDMLTVEDFDVSDAFQHSRSTESVKSAASET YM  
 SKINI AKRRANQQETEMFYFTKFEKEYVNGSNLITKLQAKHDLLKQTLGEGERAECGTRPPCLPPKPQKM  
 RRRPRPLSVYSHKLFNGSMEAFIKDSGQAIPLVVEESCIRYINLYGLQQQIFRVPQSQVEVNDIKNSFERG  
 EDPLVDDQNERDINSVAGVLKLYFRGLENPLFPKERFQDLISTIKLENPAERVHQIQQILVTLPRVVIVV  
 MRYLFAFLNHL SQYSDENMMDPYNLAICFGPTLMHIPDGQDPVSCQAHINEVIKTI I IHHEAIFPSPREL  
 EGPVYEKCMAGGEEYCDSPHSEPGAIDEVDHDNGTEPHTSDEEVEQIEAIAKFDYMGRSPREL SFKKGAS  
 LLLYHRASEDWWEGRHNGVDGLIPHQYIVVQDMDDAFSDLSQKADSEASSGPLLDDKASKNDLQSPTE  
 HISDYFGGVMGRVRLRSDGAAIPRRRSGDTHSPPRGLGPSIDTPPRAAACPPSPHKIPLTRGRIESPE  
 KRRMATFGSAGSINYPDKKALSEGHSRSTCGSTRHSSLGDHKSLEAEALAEIEKTMSTALHELRELER  
 QNTVKQAPDVVLDLLEPLKNPPGPVSSEPA SPLHTIVIRDPDAAMRRSSSSSTEMMTTFK PAL SARLAGA  
 QLRPPMPRPVQHRSSSSSSSGVGSVAVTPTEKMFNPSSADKSGTM

TRTRPLE – GFP Tag – V

**Restriction Sites:**

Sgfl-MluI

**Cloning Scheme:**

**Plasmid Map:**


**ACCN:** NM\_014850

**ORF Size:** 3297 bp

**OTI Disclaimer:** The molecular sequence of this clone aligns with the gene accession number as a point of reference only. However, individual transcript sequences of the same gene can differ through naturally occurring variations (e.g. polymorphisms), each with its own valid existence. This clone is substantially in agreement with the reference, but a complete review of all prevailing variants is recommended prior to use. [More info](#)

**OTI Annotation:** This clone was engineered to express the complete ORF with an expression tag. Expression varies depending on the nature of the gene.

<b>Components:</b>	The ORF clone is ion-exchange column purified and shipped in a 2D barcoded Matrix tube containing 10ug of transfection-ready, dried plasmid DNA (reconstitute with 100 ul of water).
<b>Reconstitution Method:</b>	<ol style="list-style-type: none"><li>1. Centrifuge at 5,000xg for 5min.</li><li>2. Carefully open the tube and add 100ul of sterile water to dissolve the DNA.</li><li>3. Close the tube and incubate for 10 minutes at room temperature.</li><li>4. Briefly vortex the tube and then do a quick spin (less than 5000xg) to concentrate the liquid at the bottom.</li><li>5. Store the suspended plasmid at -20°C. The DNA is stable for at least one year from date of shipping when stored at -20°C.</li></ol>
<b>RefSeq:</b>	<u>NM_014850.4</u>
<b>RefSeq Size:</b>	8901 bp
<b>RefSeq ORF:</b>	3300 bp
<b>Locus ID:</b>	9901
<b>UniProt ID:</b>	<u>O43295</u>
<b>Cytogenetics:</b>	3p25.3
<b>Domains:</b>	RhoGAP, FCH, SH3
<b>Protein Pathways:</b>	Axon guidance
<b>Gene Summary:</b>	GTPase-activating protein for RAC1 and perhaps Cdc42, but not for RhoA small GTPase. May attenuate RAC1 signaling in neurons.[UniProtKB/Swiss-Prot Function]