

## Product datasheet for **RG214275**

### MTR (NM\_000254) Human Tagged ORF Clone

#### Product data:

Product Type:	Expression Plasmids
Product Name:	MTR (NM_000254) Human Tagged ORF Clone
Tag:	TurboGFP
Symbol:	MTR
Synonyms:	cbIG; HMAG; MS
Mammalian Cell Selection:	Neomycin
Vector:	pCMV6-AC-GFP (PS100010)
E. coli Selection:	Ampicillin (100 ug/mL)
ORF Nucleotide Sequence:	>RG214275 representing NM_000254 Red=Cloning site Blue=ORF Green=Tags(s)

TTTTGTAATACGACTCACTATAGGGCGGCCGGAATTCGTCGACTGGATCCGGTACCGAGGAGATCTGCC  
GCC**CGATCGCC**

ATGTCACCCGCGCTCCAAGACCTGTCGCAACCCGAAGGTCTGAAGAAAACCTGCGGGATGAGATCAATG  
CCATTCTGCAGAAGAGGATTATGGTCTGGATGGAGGGATGGGGACCATGATCCAGCGGGAGAAGCTAAA  
CGAAGAACAACCTCCGAGGTCAAGATTTAAAGATCATGCCAGGCCGCTGAAAGGCAACAATGACATTTTA  
AGTATAACTCAGCCTGATGTCATTTACCAATCCATAAGGAATACTTGTGGCTGGGCGAGATATCATTG  
AAACAAATACTTTTAGCAGCACTAGTATTGCCAAGCTGACTATGGCCTTGAACACTTGGCTACCGGAT  
GAACATGTGCTCTGCAGGAGTGGCCAGAAAAGCTGCCGAGGAGGTAACCTCCAGACAGGAATTAAGAGG  
TTTGTGGCAGGGCTCTGGTCCGACTAATAAGCACTCTCTGTGTCCCATCTGTGAAAGGCCGATT  
ATAGGAACATCACATTTGATGAGCTTGTGAAGCATACCAAGAGCAGGCCAAAGGACTTCTGGATGGCGG  
GGTTGATATCTTACTCATTGAACTATTTTTGATACTGCCAATGCCAAGGCAGCCTTGTGGTCACTCCAA  
AATCTTTTGGAGAGAAATATGCTCCCGGCCTATCTTTATTTCCAGGGACGATCGTTGATAAAAGTGGGC  
GGACTCTTCCGGACAGACAGGAGAGGGATTTGTATCAGCGTGTCTCATGGAGAACCACTCTGCATTGG  
ATTAATTTGTGCTTTGGGTGCAGCTGAAATGAGACCTTTTATTGAAATAATTGAAAAATGTACAACAGCC  
TATGCTCTGTATCCCAATGCAGGTCTCCCAACCTTTGGTACTATGATGAAACGCTTCTATGA  
TGGCCAAGCACCTAAAGGATTTTGTATGGATGGCTTGGTCAATATAGTTGGAGGATGCTGTGGGTCAAC  
ACCAGATCATATCAGGAAATTTGCTGAAGCTGTGAAAAATTTGAAGCCTAGAGTTCCACCTGCCACTGCT  
TTTGAAGGACATATGTTACTGTCTGGTCTAGAGCCCTCAGGATTGGACCGTACACCAACTTTGTTAACA  
TTGGAGAGCGCTGAATGTTGCAGGATCAAGGAAGTTTGTAACTCATCATGGCAGGAAACTATGAAGA  
AGCCTTGTGTGTTGCCAAAGTGCAGGTGGAATGGGAGCCAGGTGTTGGATGTCAACATGGATGATGGC  
ATGCTAGATGGTCCAAGTCAATGACCAGATTTTGAACCTAATTGCTTCCGAGCCAGACATCGAAAGG  
TACCTTTGTGCATCGACTCCTCAATTTTGTGTGATTGAAGCTGGGTTAAAGTGTGCCAAGGGAAGTG  
CATTGTCAATAGCATTAGTCTGAAGGAAGGAGAGGACGACTTCTTGGAGAAGGCCAGGAAGATTAAGG



[View online »](#)

TATGGAGCTGCTATGGTGGTCATGGCTTTTGATGAAGAAGGACAGGCAACAGAAACAGACACAAAAATCA  
GAGTGTGCACCCGGGCTACCATTCTGCTTGAAAAAACTGGGCTTTAATCCAAATGACATTATTTTTGA  
CCCTAATATCCTAACCATTGGGACTGGAATGGAGGAACACAACCTGTATGCCATTAATTTTATCCATGCA  
ACAAAAGTCATTAAGAAACATTACCTGGAGCCAGAATAAGTGGAGGTCTTTCCAACCTGTCTCTCCT  
TCCGAGGAATGGAAGCCATTGAGAAGCAATGCATGGGGTTTTCTTTACCATGCAATCAAGTCTGGCAT  
GGACATGGGGATAGTGAATGCTGGAACCTCCCTGTGTATGATGATATCCATAAGGAACTCTGCAGCTC  
TGTGAAGATCTCATCTGGAATAAAGACCCTGAGGCCACTGAGAAGCTCTTACGTTATGCCAGACTCAAG  
GCACAGGAGGGAAGAAAGTCATTCAGACTGATGAGTGGAGAAATGGCCCTGTCTGAAGAACGCCTTGAGTA  
TGCCCTTGTGAAGGGCATTGAAAAACATATTATTGAGGATACTGAGGAAGCCAGGTTAAACCAAAAAA  
TATCCCGACCTCTCAATATAATTGAAGGACCCTGATGAATGGAATGAAAATTGTTGGTGATCTTTTTG  
GAGCTGAAAAATGTTTCTACCTCAGGTTATAAAGTCAGCCCGGTTATGAAGAAGGCTGTTGGCCACCT  
TATCCCTTTCATGAAAAAGAAAGAGAAGAAACCAGAGTGCTTAACGGCACAGTAGAAGAAGAGGACCT  
TACCAGGGCACCATCGTCTGGCCACTGTTAAGGCGACGTGCACGACATAGGCCAGAACATAGTTGGAG  
TAGTCCTTGGCTGCAATAATTTCCGAGTTATTGATTTAGGAGTCATGACTCCATGTGATAAGATACTGAA  
AGCTGCTCTTGACCACAAAGCAGATATAATTGGCCTGTCAGGACTCATCACTCCTCCCTGGATGAAATG  
ATTTTTGTTGCCAAGGAAATGGAGAGATTAGCTATAAGGATTCCATTGTTGATTGGAGGACAACCACTT  
CAAAAACCCACACAGCAGTTAAAATAGCTCCGAGATACAGTGCACCTGTATCCATGTCTGGACCGCTC  
CAAGAGTGTGGTGGTGTGTTCCAGCTGTAGATGAAAATCTAAAGGATGAATACTTTGAGGAAATCATG  
GAAGAATATGAAGATATTAGACAGGACCATTATGAGTCTCTCAAGGAGAGGAGATACTTACCCTTAAGTC  
AAGCCAGAAAAAGTGGTTTCAAATGGATTGGCTGTCTGAACCTCACCCAGTGAAGCCACGTTTATTGG  
GACCCAGGTCTTTGAAGACTATGACCTGCAGAAGCTGGTGGACTACATTGACTGGAAGCCTTTCTTTGAT  
GTCTGGCAGCTCCGGGCAAGTACCCGAATCGAGGCTTTCCCAAGATATTTAACGACAAAACAGTAGGTG  
GAGAGGCCAGGAAGGTCTACGATGATGCCACAATATGCTGAACACACTGATTAGTCAAAAGAAACTCCG  
GGCCCGGGTGTGGTTGGTTCGGCCAGCACAGAGTATCCAAGACGACATTCACCTGTACGCAGAGGCT  
GCTGTGCCCCAGGCTGCAGAGCCATAGCCACCTTCTATGGGTTAAGGCAACAGGCTGAGAAGGACTCTG  
CCAGCACGGAGCCATACTACTGCCTCTCAGACTTCATCGCTCCCTTGCACTCTGGCATCCGTGACTACCT  
GGGCTGTTTGCCGTTGCCTGCTTTGGGGTAGAAGAGCTGAGCAAGGCCTATGAGGATGATGGTGACGAC  
TACAGCAGCATCATGGTCAAGGCGCTGGGGACCAGGCTGGCAGAGGCTTTGCAGAAGAGCTCCATGAAA  
GAGTTCGCCGAGAACTGTGGCCTACTGTGGCAGTGAGCAGCTGGACGTCGCAGACCTGCGCAGGCTGCG  
GTACAAGGGCATCCGCCGGCTCCTGGTACCCAGCCAGCCGACCACCCGAGAAGCTCACCATGTGG  
AGACTCGCAGACATCGAGCAGTCTACAGGCATTAGGTTAACAGAATCATTAGCAATGGCACCTGCTTCAG  
CAGTCTCAGGCCCTACTTCTCCAATTTGAAGTCCAAATATTTTGCTGTGGGGAAGATTTCCAAGGATCA  
GGTTGAGGATTATGCATTGAGGAAGAACATATCTGTGGCTGAGGTTGAGAAATGGCTTGACCCATTTTG  
GGATATGATACAGAC

AGCGGACCGACGCGTACGCGGCCGCTCGAG – GFP Tag – GTTTAA

Protein Sequence: >RG214275 representing NM\_000254  
 Red=Cloning site Green=Tags(s)

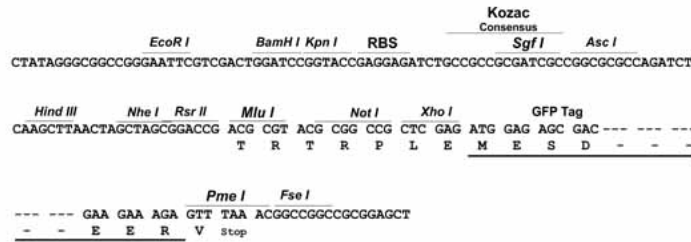
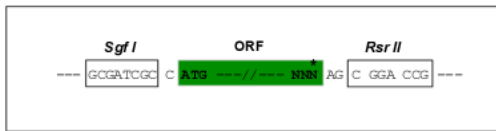
MSPALQDLSQPEGLKKTLRDEINAILQKRIMVL DGGMGTM IQREKLN EEFHFRGQEFKD HARPLKGNNDIL  
 SITQPDVIYQIHKEYLLAGADI IETNTFSST SIAQADYGLEHLAYRMNMC SAGVARKAAEEVTLQTGIKR  
 FVAGALGPTNKTL SVSPSVERPDYRNITFDELVEAYQEQA KGLLDGGVDILLIETIFDTANAKAALFALQ  
 NLFEEKYAPRPFI FSGTIVDKSGRTL SGQTGEGFVISVSHGEPLCIGLNCALGAAEMRPFIEIIGKCTTA  
 YVLCYPNAGLPNTFGDYDETPSMMAKHLKDFAMDGLVNI VGGCCGSTPDHIREIAEAVKNCKPRVPPATA  
 FEGHMLLSGLEPFRIGPYTNFVNIGERCNVAGSRKFAKLIMAGNYEEALCVAKVQVEMGAQVLDVNMDDG  
 MLDGPSAMTRFCNL IASEPDI AKVPLCIDSSNF AVIEAGLKCCQ GKIVNSISLKEGEDDFLEKARKIKK  
 YGAAMVMAFDEEQATE TDKIRVCTRAYHLLVKKLGFPNDIIFDPNILTIGTGMEEHNL YAINF IHA  
 TKVIKETLPGARISGGLSNL SFSFRGMEAI REAMHG VFLYHAIKSGMDMGIVNAGNLPVYDDIHKELLQL  
 CEDLIWNKDPEATEKLLRYAQTQGTGGKVIQTDEWRNGPVEERLEYALVKGIEKHIIEDTEEARLNQKK  
 YPRPLNIEGPLMNGMKIVGDLFGAGKMFLPQVIKSARVMKKA VGHLPFMEKEREETRVLNGTVEEEDP  
 YQGTIVLATVKGDVHDIGQNI VGVVLGCNNFRVIDLGVMTPCDKILKAALD HKADIIGLSGLITPSLDEM  
 IFVAKEMERLAIRIPLLI GGATTSKTH TAVKIAPRYSAPVIHVL DASKSVVVC SQLLDENLKD EYFEEIM  
 EYEDIRQDHYESLKERRYLP LSQLARKSGFQMDWLSEPHVPKPTFI GTQVFEDYDLQKLVDYIDWKPFFD  
 VWQLRGKYPNRFKIFNDKTVGGEARKVYDDAHNMLNTLISQKKLRARGVVGFWPAQSIQDDIHL YAEA  
 AVPQAAEPIATFYGLRQQA EKDSAST EYCYCL SDFIAPLHSGIRDYLG LFAVACFV EELSKAYEDDGD  
 YSSIMVKALGDRLA EAF AEELHERVRELWAYCGSEQLD VADLRRLRYK GIRPAPGYPSPQDHTEKLTMM  
 RLADIEQSTGIRL TESLAMAPASAVSGLYF SNLKS KYFAVGKISKDQVEDYALRKNISVAEVEKWLGPIL  
 GYDTD

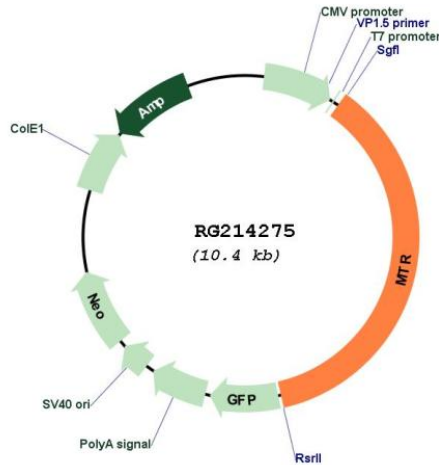
SGPTRRRLE - GFP Tag - V

Restriction Sites: SgfI-RsrII

Cloning Scheme:

Cloning sites used for ORF Shuttling:



**Plasmid Map:**


**ACCN:** NM\_000254

**ORF Size:** 3795 bp

**OTI Disclaimer:** Due to the inherent nature of this plasmid, standard methods to replicate additional amounts of DNA in E. coli are highly likely to result in mutations and/or rearrangements. Therefore, OriGene does not guarantee the capability to replicate this plasmid DNA. Additional amounts of DNA can be purchased from OriGene with batch-specific, full-sequence verification at a reduced cost. Please contact our customer care team at [custsupport@origene.com](mailto:custsupport@origene.com) or by calling 301.340.3188 option 3 for pricing and delivery.

The molecular sequence of this clone aligns with the gene accession number as a point of reference only. However, individual transcript sequences of the same gene can differ through naturally occurring variations (e.g. polymorphisms), each with its own valid existence. This clone is substantially in agreement with the reference, but a complete review of all prevailing variants is recommended prior to use. [More info](#)

**OTI Annotation:** This clone was engineered to express the complete ORF with an expression tag. Expression varies depending on the nature of the gene.

**Components:** The ORF clone is ion-exchange column purified and shipped in a 2D barcoded Matrix tube containing 10ug of transfection-ready, dried plasmid DNA (reconstitute with 100 ul of water).

- Reconstitution Method:**
1. Centrifuge at 5,000xg for 5min.
  2. Carefully open the tube and add 100ul of sterile water to dissolve the DNA.
  3. Close the tube and incubate for 10 minutes at room temperature.
  4. Briefly vortex the tube and then do a quick spin (less than 5000xg) to concentrate the liquid at the bottom.
  5. Store the suspended plasmid at -20°C. The DNA is stable for at least one year from date of shipping when stored at -20°C.

**RefSeq:** [NM\\_000254.1](#), [NP\\_000245.1](#)

RefSeq Size:	7122 bp
RefSeq ORF:	3798 bp
Locus ID:	4548
UniProt ID:	<a href="#">Q99707</a>
Cytogenetics:	1q43
Domains:	Pterin_bind, S-methyl_trans, B12-binding_2, Met_synt_B12, B12-binding
Protein Families:	Druggable Genome
Protein Pathways:	Cysteine and methionine metabolism, Metabolic pathways, One carbon pool by folate
Gene Summary:	This gene encodes the 5-methyltetrahydrofolate-homocysteine methyltransferase. This enzyme, also known as cobalamin-dependent methionine synthase, catalyzes the final step in methionine biosynthesis. Mutations in MTR have been identified as the underlying cause of methylcobalamin deficiency complementation group G. Alternatively spliced transcript variants encoding distinct isoforms have been found for this gene. [provided by RefSeq, May 2014]