

## Product datasheet for **RG214248**

### **DNAAF4 (NM\_001033559) Human Tagged ORF Clone**

#### Product data:

Product Type:	Expression Plasmids
Product Name:	DNAAF4 (NM_001033559) Human Tagged ORF Clone
Tag:	TurboGFP
Symbol:	DNAAF4
Synonyms:	CILD25; DYX1; DYX1C1; DYXC1; EKN1; RD
Mammalian Cell Selection:	Neomycin
Vector:	pCMV6-AC-GFP (PS100010)
E. coli Selection:	Ampicillin (100 ug/mL)
ORF Nucleotide Sequence:	>RG214248 representing NM_001033559 Red=Cloning site Blue=ORF Green=Tags(s)

TTTTGTAATACGACTCACTATAGGGCGGCCGGAATTCGTCGACTGGATCCGGTACCGAGGAGATCTGCC  
GCC**CGATCGCC**

ATGCTCTTCAGGTTAGCGATTACAGCTGGCAGCAGACGAAGACTGCGGTCTTTCTGTCTCTGCCCTCA  
AAGCGTGTGCGTCAGAGACACGGACGTGTTCTGCACGGAAAACATCTGAAGGTCACTTTCTCCATT  
TTTATTTGAGGCATTTCTTTATGCTCCCATAGACGATGAGAGCAGCAAAGCAAAGATTGGGAATGACACC  
ATTGTCTTCACCTTGATAAAAAAGAAGCGCCATGTGGGAGACCCTTTCTGTGACGGGTGTTGACAAAG  
AGATGATGCAAAGAATTAGAGAAAAATCTATTTTACAAGCACAAGAGAGAGCAAAGAAGCTACAGAAGC  
AAAAGCTGCAGCAAAGCGGGAAGATCAAAAATACGCACTAAGTGTGATGAAAGATTGAAGAAGAAGAG  
AGGAAAAAATAGAAGATATGAAAGAAAATGAACGGATAAAAGCCACTAAAGCATTGGAAGCCTGGAAAG  
AATATCAAAGAAAAGCTGAGGAGCAAAAAAATTCAGAGAGAAGAGAAATTATGTCAAAAAGAAAAGCA  
AATTAAGAAGAAAAGAAAAAATAAATAAAGAGTCTTACTAGAAATTTGGCATCTAGAAATCTTGCT  
CCAAAAGGAGAAATTCAGAAAATATTTACTGAGAAGTTAAAGGAAGACAGTATTCTGCTCCTCGCT  
CTGTTGGCAGTATTAATCAACTTTACCCCTCGAGTATCCCAACAGCTCTTCGTGAATCACAAGTAGC  
AGAAGAGGAGGAGTGGCTACACAACAAGCTGAGGCACGAAGAGCAATGAATACTGACATAGCTGAACCT  
TGCGATTTAAAAGAAGAAGAAAAGAACCCAGAATGGTTGAAGGATAAAGGAAAACAATTTGTTGCAACGG  
AAAATTTGGCAGCTATCAATGCATATAATTTAGCCATAAGACTAAATAATAAGATGCCACTATTGTA  
TTTGAACCGGGTCTTGCCACCTAAAACCTAAAAAATACACAAGGCTATTGAAGATTCTTCTAAGGCC  
TACAGGATTATGAAGCGGCACTTAAGATTGATCCATCCAACAAAATTGTACAAATTGATGCTGAGAAGAT  
TCGGAATG

**ACGCGT**ACGCGGCCGCTCGAG - GFP Tag - GTTTAA



[View online »](#)

**Protein Sequence:** >RG214248 representing NM\_001033559  
 Red=Cloning site Green=Tags(s)

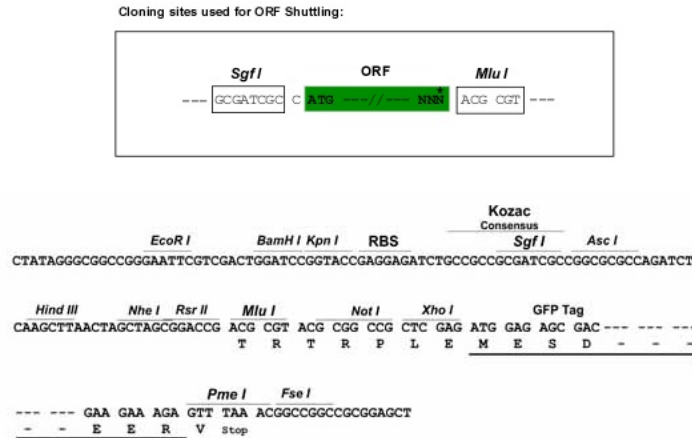
MPLQVSDYSWQQTKTAVFLSLPLKGVCRD TDVFC TENYLKVNFPFLFEAFLYAPIDDESSKAKIGNDT  
 IVFTLYKKEAAMWETLSVTGVDKEMMQRIREKSILQAQERAKEATEAKAAAKREDQKYALSYMMKIEEEE  
 RKKIEDMKENERIKATKALEAWKEYQRKAEQKKIQREEKLCQKEKQIKEERKKIKYKSLTRNLASRNLA  
 PKGRNSENIFTEKLKEDSIPAPRSVGSIKINFTRPVFTALRESQVAEEEEWLHKQAEARRAMNTDIAEL  
 CDLKEEKNPEWLKDKGNKLFATENYLAAINAYNLAIRLNNKMPLLYLNRAACHLKLKNLHKAIEDSSKA  
 YRIMKRHLRLIHPTKLYKLMRRFGM

TRTRPLE - GFP Tag - V

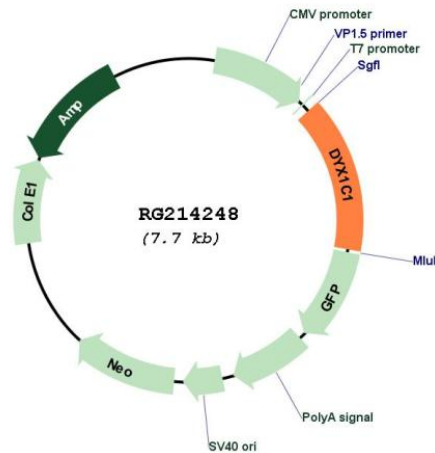
**Restriction Sites:**

SgfI-MluI

**Cloning Scheme:**



**Plasmid Map:**



**ACCN:**

NM\_001033559

<b>ORF Size:</b>	1128 bp
<b>OTI Disclaimer:</b>	The molecular sequence of this clone aligns with the gene accession number as a point of reference only. However, individual transcript sequences of the same gene can differ through naturally occurring variations (e.g. polymorphisms), each with its own valid existence. This clone is substantially in agreement with the reference, but a complete review of all prevailing variants is recommended prior to use. <a href="#">More info</a>
<b>OTI Annotation:</b>	This clone was engineered to express the complete ORF with an expression tag. Expression varies depending on the nature of the gene.
<b>Components:</b>	The ORF clone is ion-exchange column purified and shipped in a 2D barcoded Matrix tube containing 10ug of transfection-ready, dried plasmid DNA (reconstitute with 100 ul of water).
<b>Reconstitution Method:</b>	<ol style="list-style-type: none"><li>1. Centrifuge at 5,000xg for 5min.</li><li>2. Carefully open the tube and add 100ul of sterile water to dissolve the DNA.</li><li>3. Close the tube and incubate for 10 minutes at room temperature.</li><li>4. Briefly vortex the tube and then do a quick spin (less than 5000xg) to concentrate the liquid at the bottom.</li><li>5. Store the suspended plasmid at -20°C. The DNA is stable for at least one year from date of shipping when stored at -20°C.</li></ol>
<b>RefSeq:</b>	<a href="#">NM_001033559.2</a> , <a href="#">NP_001028731.1</a>
<b>RefSeq Size:</b>	1887 bp
<b>RefSeq ORF:</b>	1131 bp
<b>Locus ID:</b>	161582
<b>UniProt ID:</b>	<a href="#">Q8WXU2</a>
<b>Cytogenetics:</b>	15q21.3
<b>Gene Summary:</b>	This gene encodes a tetratricopeptide repeat domain-containing protein. The encoded protein interacts with estrogen receptors and the heat shock proteins, Hsp70 and Hsp90. An homologous protein in rat has been shown to function in neuronal migration in the developing neocortex. A chromosomal translocation involving this gene is associated with a susceptibility to developmental dyslexia. Mutations in this gene are associated with deficits in reading and spelling. Alternative splicing results in multiple transcript variants. Read-through transcription also exists between this gene and the downstream cell cycle progression 1 (CCPG1) gene. [provided by RefSeq, Mar 2011]