

Product datasheet for **RG214233**

TPR (NM_003292) Human Tagged ORF Clone

Product data:

Product Type:	Expression Plasmids
Product Name:	TPR (NM_003292) Human Tagged ORF Clone
Tag:	TurboGFP
Symbol:	TPR
Mammalian Cell Selection:	Neomycin
Vector:	pCMV6-AC-GFP (PS100010)
E. coli Selection:	Ampicillin (100 ug/mL)
ORF Nucleotide Sequence:	>RG214233 ORF sequence, codon optimized . Due to the complexity of NM_003292, the ORF clone is codon optimized for mammalian Expression. The nucleotide sequence differs from the reference sequence, yet the amino acid sequence remains identical.

Red=Cloning site Blue=ORF Green=Tags(s)

TTTTGTAATACGACTCACTATAGGGCGGCCGGAATTCGTCGACTGGATCCGGTACCGAGGAGATCTGCC
GCC**CGGATCGCC**

ATGGCTGCGGTCCTCCAGCAAGTCTGGAGAGAACTGAACTGAATAAATTGCCCAAGTCCGTGCAGAATA
AGCTTGAAAAGTTCTTGCAGATCAACAATCTGAGATCGACGGTTGAAGGGTAGACACGAAAAGTTTAA
GGTTGAGTCAGAACAACTACTTGCAGATCGAGAAAAGGCTGTCTATTCTCAAGAGCGCTTGGTGAAC
GAGACACGCGAGTGTGAGTCCCTTAGACTTGAAGTGGAGAAGCTCAATAACCAAGTTGAAGGCACTGACAG
AAAAGAACAAGAGCTGGAGATCGCACAAGACAGAAATATAGCCATTCAATCCCAGTTTACCAGAACAAA
GGAAGAGCTGGAAGCCGAGAAAAGAGACTTGTCCGCACTAACGAACGCTTGAAGCCAGGAACTGGAGTAT
CTGACTGAGGATGTTAAAAGGCTGAACGAAAAGCTGAAGGAAAGCAATACGACGAAAGGAGAGCTGCAGC
TCAAATTGGACGAACTTCAGGCATCCGATGTGAGTGTCAAGTATAGGGAGAAACGCTGGAGCAGGAGAA
GGAGTTGCTGCACTCCCAGAACCTGGCTCAACACAGAGCTGAAAACAAAAACTGACGAGCTTCTCGCG
TTGGGTAGGAAAAAGGCAACGAGATCCTTGAAGTCAAGTGAACCTCGAGAATAAGAAGGAGGAGGAT
CCCGCTGGAGGAGCAGATGAACGGACTGAAAAGTGAACGAACTTGCAGAAACACGTCGAGGATCT
GCTCACAAAGCTGAAGGAGGCAAAAGAGCAGCAGGCCAGCATGGAGGAGAAGTCCACAACGAGCTGAAC
GCTCACATTAAGTGAACCACTGTATAAATCCGCTGCCGATGATAGCGAGGCAAAAAGCAATGAACTCA
CTAGAGCCGTTGAGGAGCTGCACAAGCTGCTGAAAGAGGCGGGAGAGGCTAACAGGCGATCCAAGATCA
TCTGTTGGAGGTGGAACAGAGTAAGGATCAAATGAAAAGGAGATGTTGGAAAAAATGGCCGCTTGGAG
AAAGAAGTTGAAAATGCTAACGATCTCCTGTCGCAACAAGCGCAAGGGGCCATTCTCTGAGGAGG
AGCTGGCCGCTATGTCCCAACAGCCGCGGTCGCAAAAGATCGTCAAGCCTGGTATGAAGCTGACGGA
GCTGTATAACGCTTATGTGGAGACACAAGACCAGCTGCTGTTGGAAAAGTTGGAGAACAAGCGCATCAAT



View online »

AAGTATTTGGACGAAATTGTTAAGGAGGTGGAGGCCAAAGCGCCGATTTTGAAGCGGCAGAGAGAGGAGT
ACGAGAGAGCTCAAAAAGCAGTGGCATCCCTCTCAGTGAAGCTTGAACAGGCGATGAAAGAAATCCAGAG
ACTGCAGGAGGACACCGATAAAGCCAACAACAGTCTTCCGTCCTGGAGCGAGATAACCGGAGGATGGAA
ATCCAGGTGAAGGACCTCTCTCAGCAGATTCGGGTGCTTCTGATGGAAGTGGAGGAGGCAAGGGGGAATC
ACGTCAATTAGGGACGAGGAGGTGAGCTCCGCCGACATCAGTCTTCAAGCGAAGTTATTAGCCAACACTT
GGTATCCTACAGGAATATTGAGGAGTTGCAACAGCAGAACCAGAGGCTGCTGGTGGCTCTTCGCGAACTG
GGGAGACTCGCGAACGCGAGGAACAGGAGACTACCTCTTCCAAGATAACTGAGCTGCAGTTGAAGCTCG
AGTCCGCCCTCACCGAGCTTGGCAGCTGCGGAAGTCAAGACAGCACCAGATGCAGCTTGTGACTCCAT
CGTCCGGCAAAGGGACATGTACCGCATCTGCTGAGTCAGACCACAGGGGTAGCTATCCCCCTGCATGCC
AGTAGTCTGGATGACGTCTCTCTGGCCAGTACCCCAAAGAGGCCCTTACCAGTCAAACCGTCAGTACCC
CTGCTCCGGTGCCTGTTATCGAGAGCACAGAGGCAATTGAGGCGAAGGCAGCTCTTAAGCAGCTCCAGGA
AATATTCGAAAACACAAGAAGGAGAAAGCCGAAAACGAAAAGATTCAAACGAGCAGCTCGAGAAGCTC
CAGGAGCAAGTACTGATCTCCGCTCTCAGAACACTAAAATATCCACACAATTGGACTTCGCTCCAAGC
GGTATGAGATGCTTCAAGACAACGTGGAGGTTACAGACGAGAGATTACCAGCTGCATGAGAGGAACCA
AAAGCTGACAGCCACCACCCAGAAAACAAGAGCAAATCATTAAACCCATGACGCAAGACCTGAGGGGCGCG
AACGAGAAGCTGGCGGTGGCCGAGGTCCGCGCAGAGAACCTTAAGAAGGAGAAAGAGATGCTTAACTTA
GCGAGGTGAGACTGAGCCAGCAACGCGAAAAGCCTGCTGGCTGAACAGAGGGGCCAGAATCTCCTCCTGAC
TAATCTGCAAAACAATTACAGGTATCTTGGAGAGGTCCGAAAACGAAAACAAGCAACGGCTTTCAAGCCAG
ATTGAAAATTTGGAGCACGAAATTAGCCACCTCAAGAAGAAGCTGGAGAAATGAGGTGGAGCAGCGACACA
CCCTCACCCGGAATCTCGACGTCAGCTGCTTGACACTAAAAGGCAACTGGATACAGAAACCAACCTGCA
CCTTAATACTAAGGAGCTGCTGAAGAACGCACAGAAAAGAAATGCTACTCTTAAGCAGCACCTCTCAAA
ATGGAGGTCCAGTAGCCTCACAACTTTCACAGCGGACCGGAAAAGGGCAGCCGTCACAAAGAGGACG
TGGATGACCTCGTGTCCAGCTGCGGCAGACAGAAAGCAGGTGAACGACCTCAAGGAACGCTTAAAAC
TTCCACTAGTAACGTTGAACAGTATCAAGCGATGGTTACCAGTCTGGAAGAGTCACTGAACAAAAGAAAG
CAGGTGACCGAGGAGGTGAGAAAACATCGAGGTGCGCCTGAAAGAGTCTGCAGAAATCCAGACCCAGC
TGGAGAAGAACTGATGGAGGTGGAGAAGGAGAAGCAGGAGCTCCAGGATGATAAAAGCGGGCCATCGA
GTCTATGGAGCAGCAACTGTCCGAACTCAAAAAACCTTGTCTTCTGTGCAGAAATGAAGTGAAGAGGCG
TTGCAGAGAGCATCCACCGCTCTGAGTAATGAACAGCAGGCCAGACGGGACTGTCAGGAACAAGCCAAGA
TCGCAGTCGAAGCTCAGAAACAAGTACGAACCGGAACTGATGCTTCATGCAGCAGAGCTGGAAGCACTGCA
AGCCGCAAAGAGCAGGTGTCCAAGATGGCCAGCTACGGCAACATTTGGAAGAGACAACACAAAAGGCA
GAGAGCCAGCTTTTGAATGCAAGGCCAGCTGGGAGGAGCGCAGAGAATGCTTAAAGGACGAAGTGTCAA
AGTGTGTGTGCAGATGCGAGGACCTGGAGAAAACAAAATCGACTCCTCCAGCATCAGATCGAGAACTGTC
CGATAAAGTTGTTGCATCAGTGAAGGAGGGGTGCAAGGGCCCTCTGAATGTGTCCCTGTCCGAGGAGGGC
AAAAGTCAAGAGCAGATACTCGAAATACTCAGGTTTCATCAGGCGGGAGAAAAGAAATTCAGAGACAAGAT
TTGAGGTGGCCAGGTGGAAAGTCTGCGATATAGACAAAAGGTCGAGCTCCTCGAACCGGAGCTGCAAGA
ACTCAAGATAGTCTCAACGCAGAAAGAGAGAAGTCCAAAGTACTGCCAAAACAATGGCCAGCAGCAGAG
GAGCTGATGAAGAAAACGAAACGATGAATGTGTCATGGAGACAATAAGATGCTGAGAGAGGAAAAAG
AGCGCTGGAACAAGATCTCCAGCAAATGCAGGCGAAAGTTCGAAAACCTGGAGCTTGACATCCTCCCCT
TCAGGAAGCAAACGCGGAGCTCTCAGAAAAAAGCGGCATGTTGCAAGCCGAAAAGAAATGCTCGAAGAA
GACGTGAAAACGCTGGAAGGCTAGGAACCAACACCTGGTGAGCCAGCAAAGGATCCGGATACCGAAGAA
ATCGGAAGTTGTTGTGAGAGAAGGAGTTACACCAAGCGCATTCAACAGCTTACCGAAGAAATAGGGAG
ACTCAAGGCCGAGATCGCTCGCTCAAACGCCTCACTCACTAACAACCAAAACCTCATACAGAGTCTGAAA
GAGGACCTGAATAAAGTGCGAACGGAAGAAAGAACTATCCAAAAGGATTTGGACGCAAAGATCATCGATA
TCCAGGAGAAGGTAAAAACTATCACACAGGTCAAAAAGATTGGTCGCGCTATAAGACACAGTATGAGGA
ACTGAAAGCTCAACAGGACAAGTAAATGGAGACGTCTGCACAATCCTCCGGGGATCATCAGGAGCAGCAC
GTTTCTGTGAGGAGATGCAGGAGCTGAAAGAGACTCTGAATCAAGCGGAAACCAAGTCCAAGAGCCTGG
AGTCCCAGGTTGAGAACCTTCAAGAGACTCTTCTGAGAAAAGAAACAGAAGCTAGGAACTGCAGGAGCA
GACAGTCCAGTTGCAAAGCGAGCTGAGCCGCTCAGACAGGACCTGCAGGATCGCACCACTCAGGAAGAG
CAGCTTCGGCAGCAGATACCGAAAAAGAGGAGAAGACACGCAAGGCAATTTGATGAGCAAAAGAGCAAGA
TCGCTCACTTGGCTGGCGTGAAGAGCAACTCACAAAGGAAAACGAGGAGTTGAAGCAGCGAAATGGAGC
CTTGGATCAGCAGAAGGATGAGCTCGACGTGCGGATCACGGCCTTGAAGGCCAGTATGAGGGGCGCATC
TCAAGACTGGAACGCGAGCTGAGGGAACACCAGGAACGCCACCTGGAGCAGAGGGACGAACCACAGGAAC

CGTCTAACAAAGTACCGGAGCAGCAGAGGCAGATAACCCCTGAAGACCACCCCGGCATCCGGGGAGCGGGG
AATCGCTTCAACTAGCGACCCTCTACCGCAACATAAAGCCACACCAGTCGTTTCCACACCTAGTAAAG
GTGACGGCTGCCGCAATGGCCGGCAATAAAGTACGCCAAGGGCCTCAATCCGGCCCATGGTGACCCCTG
CAACGGTCACTAACCCCAACAACACCACCGCCACCCTAATGCCAACCCCAAGTGGAAATCACAGGA
GGCCATGCAGAGCGAAGGCCAGTGGAGCACGTGCCAGTCTTTGGCAGCACGTCTGGCTCTGTTCCGGTCA
ACGAGCCCCGAATGTTTACCCATCAATCTCACAGCCATCCTGACTGTACAGCAGCAAACGCAGGCCAACCG
CCTTTGTCCAGCCTACTCAGCAGTCACATCCTCAGATCGAGCCGGCCAATCAAGAGCTTAGTTCCAATAT
TGTAGAGGTGGTGCAGAGCTCTCCCGTGGAGAGGCCGTCTACATCCACGGCAGTCTTTGGGACCGTGAGC
GCCACACCTAGTCTTTTGCCTAAGCGGACCAGAGAAGAGGAGGAGGACAGTACTATAGAAGCTTCTG
ATCAAGTAAGCGATGACACGGTGGAAATGCCGCTTCCCAAGAAGCTGAAGTCTGTACACCCAGTGGGTAC
CGAAGAAGAGGTGATGGCAGAGGAGAGCACCGATGGAGAGGTGGAGACACAGGTGTACAATCAGGATTCC
CAAGACTCCATTGGTGGGGCGTCACTCAGGGCGACTATACACCAATGGAGGATTCTGAGGAGACATCCC
AATCTCTGCAGATAGACCTGGGCCCGCTCCAGAGTGACCAGCAAACAACCCACATCCTCTCAGGACGGACA
GGGCAAAGGAGACGACGTTATCGTCATTGATAGCGATGATGAAGAAGAGGATGATGATGAGAATGATGGC
GAACATGAGGACTATGAAGAGGACGAGGAGGATGACGACGATGATGAAGACGATACAGGGATGGGAGACG
AGGGGGAAGATAGCAACGAAGGCACAGGTAGTGCCGATGGAAATGACGGATATGAAGCTGATGACGCTGA
GGCGGAGATGGTACAGATCCCGGCACAGAGACAGAGGAGAGCATGGGTGGGGGCAAGGGAATCATCGG
GCAGCTGACTCACAGAATAGCGGCGAAGGCAATACAGGGGCTGCAGAAAGTTCTTTTTCCAGGAAGTAT
CACGAGAGCAACAGCCATCCTCTGCCAGCGAACGCCAGGCCCTAGAGCTCCCCAGTCACCTAGGAGGCC
TCCTCACCCACTGCCCCCGACTCACAATCCACGCACCCCCCAAGAACTGGGTCTCCCGTCCAGAGA
ATCCAGATGACCCGGCGGCAGTCAGTAGGAAGGGCCTGCAACTCACGCCTGGAATAGGCGGGATGCAAC
AGCATTTTTTTGATGACGAGGACCGCACCGTGCCTTCAACACCAACCCTGGTGGTACCGCACCGAACCGA
TGGATTCCCGGAGGCAATACATTCTCCTCAGGTAGCAGGAGTGCCAAGATTGAGATTGGTCTCCAGAA
GACATGCCTCAAACAAGCAGTTCTCATAGCGATCTCGGACAGCTTGAAGCCAGGGCGGTTGGGGATGT
ACGAAACCCATTGTTTCTGGCTCACGAAGAGGAGCGGAGGCAGAAGCGTGCCCACTACACCTTTGCA
GGTGGCCGCCCGTCACTGTCTTCACTGAAAGCACCACTCTGACGCTAGCGAACACGCTTCCCAAAGT
GTTCCCATGGTAACAACCAGCACCGGCACACTTAGTACAACGAATGAAACCGCGACAGGCGACGACGGAG
ATGAGGTGTTTGGAGGCCGAATCTGAAGGATTTTCATCAGAGGCCGATTGGAATTGATTCCCAGCA
GGAGGAGGAGCCAGTTCAAGCTAGCGACGAGTCCGATCTGCCATCCACTAGTCAGGACCCACCGTCAAGC
TCCTCAGTAGATACATCATCCAGCCAGCCAAGCCGTTTCAAGAGAGTGCGGCTCCAGACCACACTTCGGC
AAGGCGTGAGGGGCGGCAGTTCAACCGACAGCGAGGTGTTTCTCATGCCATGGGCGGGAGAGGGAAT
TAACAGGGGAAATATCAAT

ACGCGTACGCGGCCGCTCGAG - GFP Tag - GTTTAA

Protein Sequence: >RG214233 representing NM_003292
 Red=Cloning site Green=Tags(s)

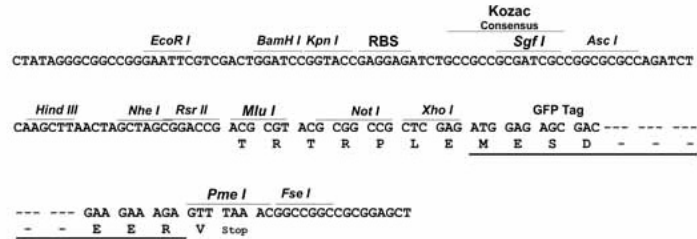
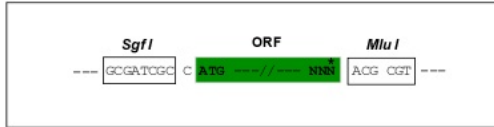
MAAVLQQVLERTELNKLPKSVQNKLEKFLADQQSEIDGLKGRHEKFKVESEQQYFEIEKRLSHSQERLVN
 ETRECQSLRLELEKLNQKALTEKNKELEIAQDRNIAIQSQFTRTKEELEAEKRDILRTNERLSQLELEY
 LTEDVKRLNEKLEKESNTTKGELQLKLDLQASDVSVKYREKRLEQEKELLSQNTWLNTELKTKTDELLA
 LGREKGNELLELKCENLKKEEVSRLEEQMNGLKTSNEHLQKHVEDLLTKLKEAKEQQASMEEKFHNELN
 AHIKLSNLYKSAADDSEAKSNELTRAVEELHKLLKEAGEANKAIQDHLLLEVEQSKDQMEKEMLEKIGRLE
 KELENANDLLSATKRKGAILSEEELAAMSPTAAAVAKIVKPGMKLTEL YNAYVETQDQLLEKLENKRIN
 KYLDEIVKEVEAKAPILKRQREEYERAQKAVASLSVKLEQAMKEIQRLQEDTDKANKQSSVLERDNRME
 IQVKDLSQQIRVLLMELEEARGNHVIRDEEVSSADISSSSEVISQHLVSYRNIEELQQQNQRLLVALREL
 GETREEREQETTSSKITEQLKLESALTELEQLRKSQRQHQMLVDSIVRQRDMYRILLSQTTGVAIPLHA
 SSLDDVSLASTPKRPSTQTVSTPAPVPVIESTEAEIAKAALKQLQEIFENYKKEKAENEKIQNEQLEKL
 QEQVTDLRSQNTKISTQLDFASKRYEMLQDNVEGYRREITSLHERNQKL TATTQKQEQIINTMTQDLRGA
 NEKLAVAEVRAENLKKKEMLKLSEVRLSQQRESLLAEQRGQNLLL TNLQTIQGILERSETETKQRLSSQ
 IEKLEHEISHLKKKLENEVEQRHTLTRNLDVQLDTRKQLDTE TNLHLNTKELLKNAQKEIATLKQHL SN
 MEVQVASQSSQRTGKGQPSNKEDVDDLVSQLRQTEEQVNDLKERLKTSTSNVEQYQAMVTSLEESLNKEK
 QVTEEVKRNIIEVRLKESAEFQTQLEKKLMEVEKEKQELQDDKRAIESMEQQLSELKKTLSVQNEVQEA
 LQRASTALSNEQQARRDCQEQAIAVEAQNKYERELMLHAADVEALQAAKEQVSKMASVRQHLEETTQKA
 ESQLECKASWEERERMLKDEVSKVCRCEDLEKQNRLLHDQIEKLSDKVVASVKEGVQGPLNVSLSEEG
 KSQEQILEILRFIRREKIEAETRFEVAQVESLRYRQVELLERELQELQDSLNAEREKVQVTAKTMAQHE
 ELMKKTETMNVVMETNKMLREEKERLEQDLQMQAKVRKLELDILPLQEAANAELSEKSGMLQAEKLLLE
 DVKRWKARNQHLVSQQKDPDTEEYRKLSEKEVHTKRIQQLTEEIGRLKAEIARSNASLTNNQNL IQSLK
 EDLNKVRTEKETIQKDLDAKIIDIQEKVKITITQVKKIGRRYKTYEELKAQQDKVMETSAQSSGDHQEQH
 VSVQEMQELKETLNQAEKSKSLESQVENLQKTLSEKETEARNLQEQTVQLQSEL SRLRQDLQDRTTQEE
 QLRQQITEKEEKTRKAIVAASKIAHLAGVKDQLTKENEELKQRNGALDQKDEL DVRITALKSQYEGRI
 SRLERELREHQRHLERDEPQEPSNKVPEQQRQITLKTTPASGERGIASSTDPPTANIKPTPVVSTPSK
 VTAAMAGNKSTPRASIRPMVTPATVTNPTTPTATVMPPTQVESQEQAMQSEGPVEHVPVFGSTSGSVRS
 TSPNVQPSISQPILTVQQQTQATAFVQPTQQSHPIEPANQELSSNIVEVVQSSPVERPSTSTAVFGTVS
 ATPSSSLPKRTREEDSTIEASDQVSDDTVEMPLPKKLKSVTPVGTVEEVMAEESTDGEVETQVYNQDS
 QDSIGEGVTQGDYTPMEDSEETSQSLQIDLGPLQSDQTTTSSQDGGGKDDVIVIDSDDEEEDDDENDG
 EHEDYEEDEEDDDDDDDTGMGDEGEDSNEGTSADGNDGYEADDAEGGDGDPGTETEE SMGGGEGNHR
 AADSQNSGEGNTGAAESSFSQEVSRQQPSSASERQAPRAPQSPRRPPHPLPPRLTIHAPPQELGPPVQR
 IQMTRRQSVGRGLQLTPGIGGMQQHFFDDEDRTVPSTPTLVVPHRTDGF AEAIHSPQVAGVPRFRFGPPE
 DMPQTSSSHSDLGQLASQGGGLMYETPLFLAHEEESGGRSVPTTPLQVAAPVTVFTESTTSDASEHASQS
 VPMVTTSTGTLSTTNETATGDDGDEVFVEAESEGISSEAGLEIDSQEEEEPVQASDES DLPSTSQDPPSS
 SSVDTSSSQPKPFRVRQLQTTLRQGVGRQFNRRQGVSHAMGGRGGINRGNIN

TRTRPLE - GFP Tag - V

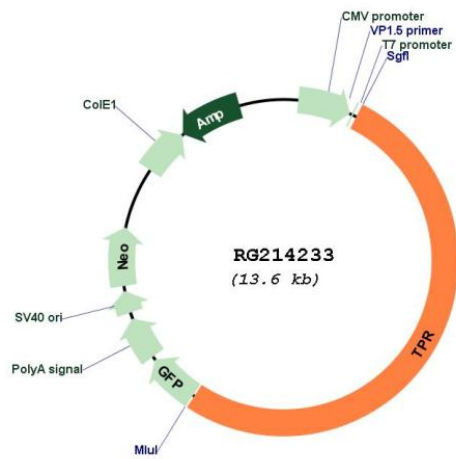
Restriction Sites: SgfI-MluI

Cloning Scheme:

Cloning sites used for ORF Shutting:



Plasmid Map:



ACCN: NM_003292
 ORF Size: 7089 bp

OTI Disclaimer:	The molecular sequence of this clone aligns with the gene accession number as a point of reference only. However, individual transcript sequences of the same gene can differ through naturally occurring variations (e.g. polymorphisms), each with its own valid existence. This clone is substantially in agreement with the reference, but a complete review of all prevailing variants is recommended prior to use. More info
OTI Annotation:	This clone was engineered to express the complete ORF with an expression tag. Expression varies depending on the nature of the gene.
Components:	The ORF clone is ion-exchange column purified and shipped in a 2D barcoded Matrix tube containing 10ug of transfection-ready, dried plasmid DNA (reconstitute with 100 ul of water).
Reconstitution Method:	<ol style="list-style-type: none">1. Centrifuge at 5,000xg for 5min.2. Carefully open the tube and add 100ul of sterile water to dissolve the DNA.3. Close the tube and incubate for 10 minutes at room temperature.4. Briefly vortex the tube and then do a quick spin (less than 5000xg) to concentrate the liquid at the bottom.5. Store the suspended plasmid at -20°C. The DNA is stable for at least one year from date of shipping when stored at -20°C.
RefSeq:	NM_003292.2 , NP_003283.2
RefSeq Size:	9636 bp
RefSeq ORF:	7092 bp
Locus ID:	7175
UniProt ID:	P12270
Cytogenetics:	1q31.1
Domains:	M, Pox_A_type_inc
Protein Pathways:	Pathways in cancer, Thyroid cancer
Gene Summary:	This gene encodes a large coiled-coil protein that forms intranuclear filaments attached to the inner surface of nuclear pore complexes (NPCs). The protein directly interacts with several components of the NPC. It is required for the nuclear export of mRNAs and some proteins. Oncogenic fusions of the 5' end of this gene with several different kinase genes occur in some neoplasias. [provided by RefSeq, Jul 2008]