

Product datasheet for **RG214198**

PTPRU (NM_133177) Human Tagged ORF Clone

Product data:

Product Type:	Expression Plasmids
Product Name:	PTPRU (NM_133177) Human Tagged ORF Clone
Tag:	TurboGFP
Symbol:	PTPRU
Synonyms:	FMI; hPTP-J; PCP-2; PTP; PTP-J; PTP-PI; PTP-RO; PTPPSI; PTPRO; PTPU2; R-PTP-PSI; R-PTP-U
Mammalian Cell Selection:	Neomycin
Vector:	pCMV6-AC-GFP (PS100010)
E. coli Selection:	Ampicillin (100 ug/mL)
ORF Nucleotide Sequence:	>RG214198 representing NM_133177 Red=Cloning site Blue=ORF Green=Tags(s)

TTTTGTAATACGACTCACTATAGGGCGGCCGGAATTCGTCGACTGGATCCGGTACCGAGGAGATCTGCC
GCC**CGATCGCC**

ATGGCCCGTGCCAGGCGCTCGTGCTGGCACTCACCTTCCAGCTCTGCGCGCCGGAGACCGAGACTCCGG
CAGCTGGCTGCACCTTCGAGGAGGCAAGTGACCCAGCAGTGCCCTGCGAGTACAGCCAGGCCAGTACGA
TGACTTCCAGTGGGAGCAAGTGCGAATCCACCCTGGCACCCGGGACCTGCGGACCTGCCCCACGGCTCC
TACTTGATGGTCAACACTTCCCAGCATGCCCCAGGCCAGCGAGCCCATGTATCTTCCAGAGCCTGAGCG
AGAATGATACCCACTGTGTGCAGTTCAGTACTTCTGTACAGCCGGGACGGGCACAGCCCGGGCACCT
GGGCGTCTACGTGCGCGTAAATGGGGGCCCCCTGGGCAGTGTGTGGAATATGACTGGATCCACGGC
CGTCAGTGGCACCAGGCTGAGCTGGCTGTGCACTTTCTGGCCCAATGAATATCAGGTGCTGTTTGAGG
CCCTCATCTCCCCAGACCGCAGGGGCTACATGGGCCTAGATGACATCCTGCTTCTCAGTACCCCTGCGC
AAAGGCCCCACACTTCTCCCGCTGGGCGACGTGGAGGTCAACGCGGGCCAGAACGCGTCTGTTCCAGTGC
ATGGCCGCGGGCAGAGCGGCCGAGGCCGAACGCTTCTCTTGAACGCGCAGAGCGGGGCGTGGTGCCGG
CGGCGGGCGTGGGCACATCAGCCACCGGCGCTTCTGGCCACTTCCCGCTGGCTGCCGTGAGCCGCGC
CGAGCAGGACCTGTACCGCTGTGTGTCCAGGCCCGCGCGGGCGTCTCTAACTTCGCGGAGCTC
ATCGTCAAGGAGCCCCAACTCCATCGCGCCCCACAGCTGCTGCGTGGCCCCACCTACCTCATCA
TCCAGCTCAACACCAACTCCATCATTGGCGACGGGCCGATCGTGCGAAGGAGATTGAGTACCGCATGGC
GCGCGGGCCCTGGGCTGAGGTGCACGCCGTGAGCCTGCAGACCTACAAGTGTGGCACCTCGACCCCGAC
ACAGAGTATGAGATCAGCGTGTGCTCACGCGTCCCGGAGACGGCGGCACTGGCCGCCCTGGGCCACCC
TCATCAGCCGACCAATGCGCAGAGCCCATGAGGGCCCCAAAGGCTGGCTTTTGCTGAGATCCAGGC
CCGTGAGTACCTGACCTGAGTGGGAACCTGGGCTACAACGTGACGCGTTGCCACACCTATACTGTGTCG
CTGTGCTATCACTACCCCTGGGACGACGCCACAACCAGACCATCCGAGAGTGTGTAAGACAGAGCAAG
GTGTGAGCGCTACACCATCAAGAACCTGCTGCCCTATCGGAACGTTACGTGAGGCTTGTCTCTACTAA
CCCTGAGGGCGCAAAGAGGGCAAGGAGTCACTTCCAGACGGATGAGGATGTGCCAGTGGGATTGCA



[View online >](#)

GCCGAGTCCCTGACCTTCACTCCACTGGAGGACATGATCTTCTCAAGTGGGAGGAGCCCCAGGAGCCCA
ATGGTCTCATACCCAGTATGAGATCAGCTACCAGAGCATCGAGTCATCAGACCCGGCAGTGAACGTGCC
AGGCCACGACGTACCATCTCCAAGCTCCGCAATGAGACCTACCATGTCTTCTCCAACCTGCACCCAGGC
ACCACCTACCTGTTCTCCGTGCGGGCCCGCACAGGCAAAGGCTTCGGCCAGGCGGCACTCACTGAGATAA
CCACTAACATCTCTGCTCCAGCTTTGATTATGCCGACATGCCGTACCCCTGGGCGAGTCTGAGAACAC
CATCACCGTGTCTGAGGCCGGCACAGGGCCGGTGCGCCATCAGTGTGTACCAGGTGATTGTGGAG
GAGGACGGGGCGCGGAGGCTGCGGCGGGAGCCAGGTGGACAGGACTGCTCCCAGTGCCATTGACCTTCG
AGGCGGCCCTGGCCGAGGCTGGTGCCTACTTCGGGGCCGAAGTGGCGGCCAGCAGTCTACCTGAGGC
CATGCCCTTTACCGTGGGTGACAACCAGACCTACCAGAGCTTCTGGAACCCACCCTTGAGCCTAGGAAG
GCCTATCTCATCTACTTCCAGGCAGCAAGCCACCTGAAGGGGGAGACCCGGCTGAATTGCATCCGCATTG
CCAGGAAAGCTGCCTGCAAGGAAAGCAAGCGGCCCTGGAGGTGTCCAGAGATCGGAGGAGATGGGGCT
TATCCTGGGCATCTGTGCAGGGGGGCTTGTGTCTCATCTTCTCCTGGGTGCCATCATTGTGCATCATC
CGCAAAGGGAAGCCGGTGAACATGACCAAGGCCACCGTCAACTACCGCCAGGAGAAGACACACATGATGA
GCGCCGTGGACCCGAGCTTCACAGACCAGAGCACCTGCAGGAGGACGAGCGGCTGGGCCTGTCTTCAT
GGACCCCATGGCTACAGCACCCGGGAGACCAGCGCAGCGGTGGGGTCACTGAGGCCAGCAGCCTCCTG
GGGGGCTCCCCGAGGCGTCCCTGTGGCCGGAAGGGCTCCCATACACACGGGGCAGCTGCACCCCTGCGG
TGCGTGTGCGAGACCTTCTGCAGCACATCAACCAGATGAAGACGGCCGAGGGTTACGGCTTCAAGCAGGA
GTATGAGAGCTTCTTTGAAGGCTGGGACGCCACAAGAAGAAAGACAAGGTCAAGGGCAGCCGGCAGGAG
CCAATGCCTGCCTATGATCGGCACCGAGTAAAAGTGCACCCGATGCTGGGAGACCCCAATGCCGACTACA
TTAATGCCAACTACATAGATATTCGGATAAACCAGAAAGGTTACCACAGGTCAAACCACTTCATAGCCAC
TCAAGGGCCGAAGCCTGAGATGGTCTATGACTTCTGGCGTATGGTGTGGCAGGAGCACTGTTCCAGCATC
GTCATGATCACCAGCTGGTGCAGGTGGCAGGGTGAATGCTCACGGTACTGGCCGAGGACTCAGACA
CCTACGGGGACATCAAGATTATGCTGGTGAAGACAGAGACCCTGGCTGAGTATGTCGTGGCAGCTTTTGC
CCTGGAGCGGAGAGGCTACTCTGCCCGGCACAGGTCCGCCAGTTCACCTTCACAGCGTGGCCAGAGCAT
GGCGTCCCTACCATGCCACGGGCTGTGGCTTTCATCCGGCGCGTGAAGGCCTCCACCCACCTGATG
CCGGGCCATTGTATCCACTGCAGCGCGGGCACCAGCCGACAGGTTGCTATATCGTCCTGGATGTGAT
GCTGGACATGGCAGAGTGTGAGGGCGTGTGGACATTTACAAGTGTGGAAGACTCTCTGCTCCCGCGT
GTCAACATGATCCAGACTGAGGAGCAGTACATCTTCAATCATGATGCAATCCTGGAGGCCTGCCTGTGTG
GGGAGACCACCATCCCTGTCAGTGTGAGTTCAAGGCCACCTACAAGGAGATGATCCGCATTGATCCTCAGAG
TAATTCCTCCAGCTGCGGGAAGAGTTCAGAGCCTGAACTCGGTACCCCGCCGCTGGACGTGGAGGAG
TGCAGCATCGCCCTGTTGCCCGGAACCCGACAAAGAACCAGCATGGACGTCTGCCGCCGACCGCT
GCCTGCCCTTCTCATCTCCACTGATGGGACTCCAACAACCTACATTAATGCAGCCCTGACTGACAGCTA
CACACGGAGTGGCGCTTTCATCGTGACCCTGCACCCGCTGCAGAGCACCACGCCGACTTCTGGCGGCTG
GTCTACGATTACGGGTGCACCTCCATCGTCATGCTCAACCAGTGAACCAGTCCAACCTCCGCTGGCCCT
GCCTGCAGTACTGGCCAGAGCCAGGCGGCAGCAATATGGCCATGAGGAGTGGAGTTTATGTGGGGCAC
AGCTGATGAAGACTTAGTGGCTCGAGTCTTCCGGGTGCAGAACATCTCTCGGGAGGGGCACCTGTGGTG
CGGCACTCCAGTTCTGCGTGGTCTGCATACCGGGACACACCTGACTCCAAGAAGGCCTTCTTGACC
TGCTGGCTGAGGTGGACAAGTGGCAGGCCGAGAGTGGGATGGGCGACCATCGTGCCTGCTAAACCG
GGGAGGACGACGCGCACCTTCTGCGCCTGCGCCACGGTCTGGAGATGATCCGCTGCCACAACCTGGTG
GACGTTTTCTTTGCTGCCAAAACCTCCGGAACCTACAAACCAACATGGTGGAGACCATGGATCAGTACC
ACTTTTGTACGATGTGGCCCTGGAGTACTTGGAGGGGCTGGAGTCAAGA

AGCGGACCGACGCGTACGCGGCCGCTCGAG - GFP Tag - GTTTAA

Protein Sequence: >RG214198 representing NM_133177
 Red=Cloning site Green=Tags(s)

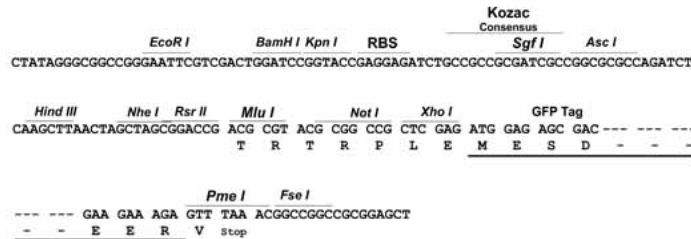
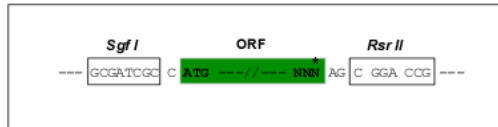
MARAQALVLALTFQLCAPETETPAAGCTFEEASDPVAVPCEYSQAQYDDFQWEQVRIHPGTRAPADLPHGS
 YLMVNTSQHAPGQRAHVIFQSLSENDTHCVQFSYFLYSRDGHSPGTLGVYVRVNGGPLGSVAVNMTGSHG
 RQWHQAEALAVSTFWPNEYQVLFALISPDRRGYMGLDDILLLSYPCAKAPHFSRLGDVEVNAGQNASFQC
 MAAGRAAEAEERFLLQRQSGALVPAAGVRHISHRRFLATFPLAAVSRAEQDLRYRCVSOAPRGAGVSNFAEL
 IVKEPPTPIAPPQLLRAGPTYLIIQLNTNSIIGDGPVIRKEIEYRMARGPWAEVHAVSLQTYKLWHLDPD
 TEYEISVLLTRPGDGGTGRPGPLISRTKCAEPMRAPKGLAFAEIQARQLTLQWEPLGYNVTRCHTYTVS
 LCYHYTLGSSHNQTIRECVKTEQGVSRYSYTIKNLLPYRNVHVRVLVTNPEGRKEGKEVTFQTDDEVPVSGIA
 AESLTFPLEDMIFLKWEEPQEPNGLITQYEISYQSISSDPVAVNVPGRRTISKLRNETYHVFSNLHPG
 TTYLFSVRARTGKGFQAALTEITTNISAPSFYADMPSPLESENTITVLLRPAQGRGAPISVYQVIVE
 EERARRLRREPGGQDCFVPLTFAALARGLVHYFGAELAASSLPEAMPFTVGDNQTYRGFWNPPLEPRK
 AYLIYFQAASHLKGETRLNCIRIARAKACKESKRPLEVSRSEEMGLILGICAGGLAVLILLGAIIVII
 RKGKPVNMTKATVNYRQEKTHMMSAVDRSFTDQSTLQEDERLGLSFMMDTHGYSTRGDQRSGGVTEASSLL
 GGSPRRPCGRKGSPLYHTGQLHPAVRVADLLQHINQMKTAEYGFQKQYEYEFFEGWDATKKKDKVKGRSQE
 PMPAYDRHRVKLHPMLGDPNADYINANYIDIRINREGYHRSNHFIATQGPKEPVYDFWRMVMQEHCSII
 VMITKLVEVGRVKCSRYWPEDSDTYGDIKIMLVKTETLAEYVVRTFALERRGYSARHEVRQFHFTAWPEH
 GVPYHATGLLAFIRRVKASTPPDAGPIVHCASAGTGRGTCYIVLDVMLDMAECEGVVDIYNCVKTLCSRR
 VNMIQTEEQYIFIHDAILEACLGETTIPVSEFKATYKEMIRIDPQSNSSQLREEFQTLNSVTPPLDVEE
 CSIALPRNRDKNRSMVDLPPDRCLPFLISTDGDNNYINAAL TDSYTRSAAFIVTLHPLQSTTPDFWRL
 VDYDCTSIVMLNQLNQSNSAWPCLQYWPEPGRQQYGLMEVEFMSGTADLVARVFRVQNISREGHLLV
 RHFQFLRWSAYRDTPDSSKAFLLHLLAEVDKWQAEASGDGRTIVHCLNGGGRSGTFCACATVLEMIRCHNLV
 DVFFAAKTLRNYKPNMVETMDQYHFCYDVALEYLEGLSR

SGPTRRRLE - GFP Tag - V

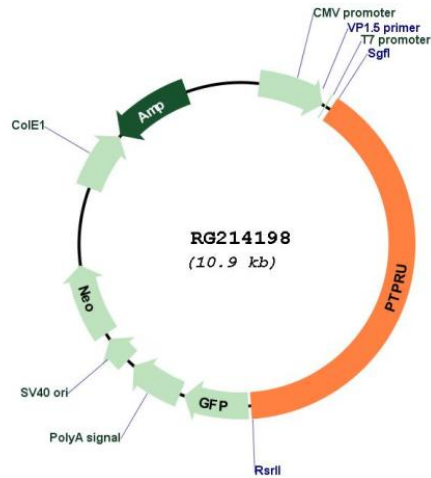
Restriction Sites: SgfI-RsrII

Cloning Scheme:

Cloning sites used for ORF Shuttling:



Plasmid Map:



ACCN: NM_133177

ORF Size: 4320 bp

OTI Disclaimer: The molecular sequence of this clone aligns with the gene accession number as a point of reference only. However, individual transcript sequences of the same gene can differ through naturally occurring variations (e.g. polymorphisms), each with its own valid existence. This clone is substantially in agreement with the reference, but a complete review of all prevailing variants is recommended prior to use. [More info](#)

OTI Annotation: This clone was engineered to express the complete ORF with an expression tag. Expression varies depending on the nature of the gene.

Components: The ORF clone is ion-exchange column purified and shipped in a 2D barcoded Matrix tube containing 10ug of transfection-ready, dried plasmid DNA (reconstitute with 100 ul of water).

Reconstitution Method:

1. Centrifuge at 5,000xg for 5min.
2. Carefully open the tube and add 100ul of sterile water to dissolve the DNA.
3. Close the tube and incubate for 10 minutes at room temperature.
4. Briefly vortex the tube and then do a quick spin (less than 5000xg) to concentrate the liquid at the bottom.
5. Store the suspended plasmid at -20°C. The DNA is stable for at least one year from date of shipping when stored at -20°C.

RefSeq: [NM_133177.4](#)

RefSeq Size: 5614 bp

RefSeq ORF: 4323 bp

Locus ID: 10076

UniProt ID: [Q92729](#)

Cytogenetics: 1p35.3

Protein Families: Transmembrane

Gene Summary: The protein encoded by this gene is a member of the protein tyrosine phosphatase (PTP) family. PTPs are known to be signaling molecules that regulate a variety of cellular processes including cell growth, differentiation, mitotic cycle, and oncogenic transformation. This PTP possesses an extracellular region, a single transmembrane region, and two tandem intracellular catalytic domains, and thus represents a receptor-type PTP. The extracellular region contains a meprin-A5 antigen-PTP (MAM) domain, Ig-like and fibronectin type III-like repeats. This PTP was thought to play roles in cell-cell recognition and adhesion. Studies of the similar gene in mice suggested the role of this PTP in early neural development. The expression of this gene was reported to be regulated by phorbol myristate acetate (PMA) or calcium ionophore in Jurkat T lymphoma cells. Alternatively spliced transcript variants have been reported. [provided by RefSeq, Aug 2010]