

## Product datasheet for **RG214194**

### SLC12A6 (NM\_001042497) Human Tagged ORF Clone

#### Product data:

**Product Type:** Expression Plasmids  
**Product Name:** SLC12A6 (NM\_001042497) Human Tagged ORF Clone  
**Tag:** TurboGFP  
**Symbol:** SLC12A6  
**Synonyms:** ACCPN; KCC3; KCC3A; KCC3B  
**Mammalian Cell Selection:** Neomycin  
**Vector:** pCMV6-AC-GFP (PS100010)  
**E. coli Selection:** Ampicillin (100 ug/mL)  
**ORF Nucleotide Sequence:** >RG214194 representing NM\_001042497  
**Red=Cloning site Blue=ORF Green=Tags(s)**

TTTTGTAATACGACTCACTATAGGGCGGCCGGAATTCGTCGACTGGATCCGGTACCGAGGAGATCTGCC  
GCC**CGATCGCC**

ATGCATCCTCCAGAAACCACCACCAAGATGGCTTCAGTTCGGTTCATGGTGACACCGACAAAGATCGATG  
ACATTCAGGTTTGTGACACACAGTCCGGACCTCAGCTCGATCTAGTTCGGAGTAAGATTTAGCTC  
CCGGGAAAGCGTGCTGAAACAAGCCGGAGTGAGCCTATGAGTGAGATGTCTGGGGCCACCACTTCGCTG  
GCAACTGTTGCACTGGATCCACCCAGTGACCGGACTTCTACCCCAAGGATGTCATCGAGGACGACGGAC  
ATAAGAAAGCTCGAAATGCTTATCTCAATAATTCCAATTATGAAGAAGGAGATGAATATTTTGATAAAAA  
TTTGGCACTCTTTGAGGAAGAAATGGACACCAGACCGAAGGTGTCTTCCCTCCTCAACCGCATGGCCAAT  
TACACTAATCTGACTCAAGGAGCAAAGGAACATGAAGAGGCAGAAAACATCACTGAAGGGAAAAAGAAC  
CCACCAAGACCCCAAAATGGGTACCTTCATGGGTGTCTACCTCCCATGTCTACAAAATATTTTTGGAGT  
GATCCTTTTTTACGCCTTACATGGGTGGTGGGCACAGCTGGAGTTCTTCAGGCTTTTGCAATTGTCCTT  
ATCTGCTGCTGTACAATGTTGACTGCTATCTCCATGAGTGCCATTGCCACTAATGGAGTGGTGCCAG  
CTGGGGCTCATACTTTATGATTTCCGGGCACTGGGCCAGAGTTTGGTGGGCTGTGGCCTCTGCTT  
TTATCTTGGTACCACATTTGCAGCAGCCATGTACATCCTTGGTGCCATTGAAATCTTTCTGGTCTATATC  
GTCCCCGAGCTGCCATCTTTCACAGTGATGACGCACTCAAGGAATCAGCAGCCATGCTAAATAACATGC  
GTGTCTACGGCACAGCTTTCTTGGTCTTATGGTATTAGTGGTATTTATCGGCGTACGCTATGTGAACAA  
GTTTGCCTCACTTTTCTGGCCTGTGTCATTGTGTCCATCTTGGCCATCTATGCTGGAGCCATCAAGTCT  
TCTTTTGTCTCCACACTTCCCGGTCTGCATGCTGGTAACCGCACCTTTTCATCAAGACACATTGACG  
TTTGCTCTAAGACCAAGGAAATTAACAACATGACAGTCCCATCAAAGTTATGGGGATTCTTCTGTAACCT  
GAGTCAATTTTTCAATGCCACCTGTGATGAATACTTTGTTACAATAACGTCACCTCAATCCAGGGCATT  
CCTGGATTGGCTAGTGGTATAATTACAGAGAATCTTTGGAGTAATTACCTACCAAGGGAGAGATCATCG  
AAAAGCCTTCAGCAAACTCTTCTGATGTCTTAGGCAGCTTAAACCATGAATATGTTCTTGTGACATCAC  
CACCTCCTTCAGCTTCTGGTGGGAATCTTCTTCCCTCTGTTACAGGTATCATGGCTGGATCAAACAGA



[View online >](#)

TCTGGAGATCTGAAAGATGCTCAGAAGTCTATTCCGATTGGTACTATCCTTGCCATCCTGACCACCTCCT  
 TTGTTTATTTAAGCAATGTTGTCCTTTTTGGTGCATGTATTGAAGGGGTTGTTCTCAGAGACAAGTTCGG  
 TGATGCTGTGAAAGGTAATTTGGTGGTAGGCACCTTATCTGGCCATCCCCATGGGTGATTGTTATTGGC  
 TCCTTCTTTTCAACATGTGGGGCTGGACTTCAGAGCCTCACAGGTGCACCGAGGCTGCTACAAGCTATTG  
 CCAAGGATAACATCATACCGTTTCTGAGGGTTTTGGCCACAGCAAAGCCAATGGGGAACCTACCTGGGC  
 TTTACTTCTAACTGCTGCCATTGCAGAGCTTGAATACTCATTGCCTCCCTGGATCTTGTGGCCCCAAT  
 CTTTCCATGTTTTTCTCATGTGTACCTCTTTGTAACCTTGGCATGTGCCTTGAACAACTACTTTCGAA  
 CACCCAACCTGGAGACCCCGATTCCGCTACTACCATTGGGCCCTTCTTTTCATGGGAATGAGTATCTGTCT  
 GGCTCTGATGTTCAATTTCTCTGGTATTATGCCATTGTAGCCATGGTAATAGCTGGTATGATCTACAAG  
 TACATTGAATACCAAGGAGCTGAGAAAGAATGGGGTATGGTATCCGTGGGCTGTCCCTCAGTGCAGCCC  
 GGTTCGTTTCTGATTGGAGGAAGGACCTCCACACTAAAACTGGAGGCCTCAGTTGCTTGTATT  
 ACTGAACTAGATGAAGACTTACATGTCAAGCATCCTCGCTCCTCACCTTTGCCTCACAGCTCAAAGCA  
 GGAAAAGGTCTCACTATTGTGGGCTCTGCATCGTGGGAACTTCTAGAGAACTACGGTGAAGCTTTAG  
 CTGCTGAGCAGACCATAAAGCACCTAATGGAGGCAGAGAAGGTAAGGATTCTGCCAGCTGGTGGTGGC  
 CGCAAGCTGAGAGAGGGCATTCCACCTCATCCAGTCATGTGGCCTTGGGGGCATGAAGCACAACACG  
 GTGGTGTGGGCTGGCCTAATGGCTGGCGTCAAAGCGAAGATGCCCGCGCTTGAAGACTTTTATTGGCA  
 CAGTTCGAGTGACAACCTGCTGCCATCTTGCACTGCTGGTGGCTAAAAACATCTCCTTTTCCAGCAA  
 TGTGGAGCAATTTCTGAGGGCAACATTGATGTGTGGTGGATTGTGCATGATGGGGGGATGCTTATGCTA  
 CTACCATTCCTACTGAAACAGCACAAGGTGTGGCGAAAGTGCAGCATACGGATCTTCACAGTAGCCCAAT  
 TAGAAGACAACAGTATCCAAATGAAGAAGGACCTAGCCACCTTCTATATCACTTACGCATTGAGGCGGA  
 GGTAGAAGTGGTGGAGATGCATGACAGTATATCAGCATATACTTACGAGCGCACTTTGATGATGGAA  
 CAAAGTCCCAGATGCTCCGGCACATCGGGCTATCCAAAACAGAGCGAGACAGAGAGGCACAATTTGGTGA  
 AAGACCGAACTCAATGCTACGATTGACCAGCATTTGGCTCTGATGAGGACGAAGACAGAAACCTATCA  
 GGAGAAGGTGCACATGACTTGGACAAAAGACAAGTACATGGCATCCCGGGGACAAAAAGCGAAGTCAATG  
 GAAGGATTCCAGGACCTGCTAACATGCGTCCGGACCAGTCCAATGTGAGGCGGATGCATACAGCAGTGA  
 AACTCAACGAGGTTATAGTTAACAAGTCCCATGAAGCAAAGCTGGTTTTATTGAATATGCCAGGGCCACC  
 CCGAAACCCTGAGGGTGTGAAAACATACATGGAGTTTCTAGAGGTGCTTACCGAGGGACTAGAGCGAGTC  
 CTACTTGTCCGGGTGGTGGCAGTGAAGTATCACCATTATTCA

ACGCGTACGCGGCCGCTCGAG – GFP Tag – GTTTAA

**Protein Sequence:**

>RG214194 representing NM\_001042497  
 Red=Cloning site Green=Tags(s)

MHPPETTTKMASVRFMVTPTKIDDIPGLSDTSPDLSSRSSRVRFSSRESVPETSRSEPMSEMSGATTS  
 ATVALDPPSDRTSHPQDVIEDDGHKKARNAYLNNSNYEEGDEYFDKNLALFEEEMDRPKVSSLLNRMAN  
 YTNLTQGAKEHEEAENITEGKKKPTKTPQMGTFMGVYLPCLQNIQFVILFLRLTWVVGTAGVLQAFIVL  
 ICCCTMLTAISMSAIATNGVVPAGGSYFMISRALGPEFGGAVGLCFYLGTTFAAAMYILGAIIEIFLVYI  
 VPRAAIFHSDDALKEAAMLNMRVYGTAFLLVLMVLVVFVGVRYVYVNFASLFLACVIVSILAIYAGAIKS  
 SFAPPHFPVCMLGNRTLSSRHIDVCSKTKKEINNMTVPSKLVWFFCNSSQFFNATCDEYFVHNNVTSIQGI  
 PGLASGIITENLWSNYLPKGEIIEKPSAKSSDVLGSLNHEYVLVDITTSFTLLVGIFFPSVTGIMAGSNR  
 SSDLKDAQKSIPIGTLAILTTSFVYLSNVVLFACIEGVVLRDKFGDAVKGNL VVGTLSWVSPWVIVIG  
 SFFSTCGAGLQSLTGAPRLQAIKDNIPFLRVFGHKSANGEPTWALLLTAIIAELGILIASLDLVAPI  
 LSMFFLMCYL FVNLCALQTLRTPNWRPRFRYYHWALSFMGMSICLALMFISSWYAIIVAMVIAGMIYK  
 YIEYQGAKEKEWGDGIRGLSLSAARFALLRLEEGPPHTKNWRPQLLVLLKLDLHVKHPRLLTFASQLKA  
 GKGLTIVGSVIVGNFLENYGEALAAEQTIKHLMAEKVKGFQCLVVAAKLREGISHLIQSCGLGGMKHT  
 VVMGWPNGWRQSEARAWKTFIGTVRVTTAAHLALLVAKNISFFPSNVEQFSEGNIDVWVIVHDGGMLML  
 LPFLLKQHKVWRKCSIRIFTVAQLEDNSIQMKDLATFLYHLRIEAEVEVEMHDSISAYTYERTLMME  
 QRSQMLRHMRLSKTERDREAQLVKDRNSMLRLTSGSDEDEETETYQEKVHMTWTDKYMASRGQKAKSM  
 EGFQDLLNMRPDQSNVRRMHTAVKLNEVIVNKSHEAKLVLLNMPGPPRNPEGDENYMEFLEVLTEGLERV  
 LLVRGGGSEVITIYS

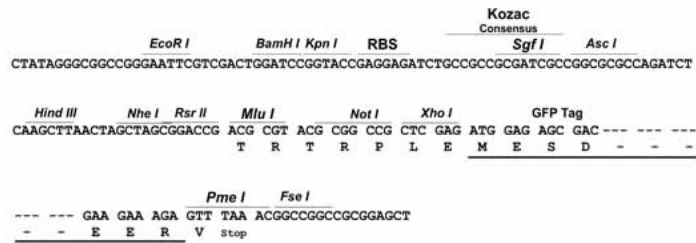
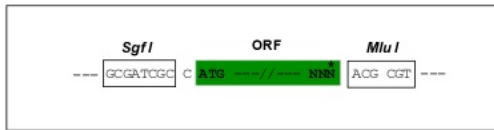
TRTRPLE – GFP Tag – V

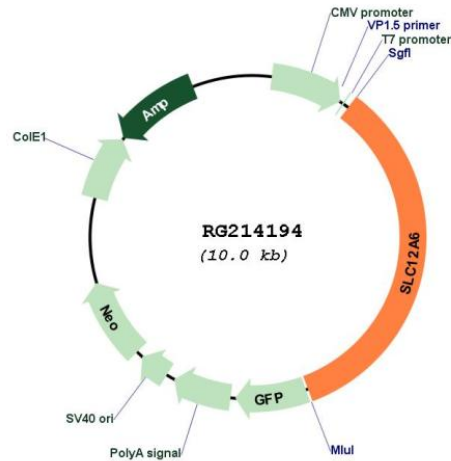
Restriction Sites:

SgfI-MluI

Cloning Scheme:

Cloning sites used for ORF Shutting:



**Plasmid Map:**


**ACCN:** NM\_001042497

**ORF Size:** 3405 bp

**OTI Disclaimer:** The molecular sequence of this clone aligns with the gene accession number as a point of reference only. However, individual transcript sequences of the same gene can differ through naturally occurring variations (e.g. polymorphisms), each with its own valid existence. This clone is substantially in agreement with the reference, but a complete review of all prevailing variants is recommended prior to use. [More info](#)

**OTI Annotation:** This clone was engineered to express the complete ORF with an expression tag. Expression varies depending on the nature of the gene.

**Components:** The ORF clone is ion-exchange column purified and shipped in a 2D barcoded Matrix tube containing 10ug of transfection-ready, dried plasmid DNA (reconstitute with 100 ul of water).

**Reconstitution Method:**

1. Centrifuge at 5,000xg for 5min.
2. Carefully open the tube and add 100ul of sterile water to dissolve the DNA.
3. Close the tube and incubate for 10 minutes at room temperature.
4. Briefly vortex the tube and then do a quick spin (less than 5000xg) to concentrate the liquid at the bottom.
5. Store the suspended plasmid at -20°C. The DNA is stable for at least one year from date of shipping when stored at -20°C.

**RefSeq:** [NM\\_001042497.2](#)

**RefSeq Size:** 7457 bp

**RefSeq ORF:** 3408 bp

**Locus ID:** 9990

**UniProt ID:** [Q9UHW9](#)

**Cytogenetics:** 15q14

**Protein Families:** Transmembrane

**Gene Summary:** This gene is a member of the K-Cl cotransporter (KCC) family. K-Cl cotransporters are integral membrane proteins that lower intracellular chloride concentrations below the electrochemical equilibrium potential. The proteins encoded by this gene are activated by cell swelling induced by hypotonic conditions. Alternate splicing results in multiple transcript variants encoding different isoforms. Mutations in this gene are associated with agenesis of the corpus callosum with peripheral neuropathy. [provided by RefSeq, Jul 2008]