

## Product datasheet for **RG214177**

### **KRT33A (NM\_004138) Human Tagged ORF Clone**

#### Product data:

**Product Type:** Expression Plasmids  
**Product Name:** KRT33A (NM\_004138) Human Tagged ORF Clone  
**Tag:** TurboGFP  
**Symbol:** KRT33A  
**Synonyms:** Ha-3I; HA3I; hHa3-I; K33A; Krt1-3; KRTHA3A  
**Mammalian Cell Selection:** Neomycin  
**Vector:** pCMV6-AC-GFP (PS100010)  
**E. coli Selection:** Ampicillin (100 ug/mL)  
**ORF Nucleotide Sequence:** >RG214177 representing NM\_004138  
Red=Cloning site Blue=ORF Green=Tags(s)

TTTTGTAATACGACTCACTATAGGGCGGCCGGAATTCGTCGACTGGATCCGGTACCGAGGAGATCTGCC  
 GCCCGATCGCC

ATGTCTTACAGTTGTGGCCTGCCAGCCTGAGCTGCCGCACCAGCTGCTCCTCCCGGCCCTGTGTGCCCC  
 CCAGCTGCCACGGCTGCACCCTGCCCGGGGCTGCAACATCCCCGCAATGTGAGCAACTGCAACTGGTT  
 CTGTGAGGGCTCCTTCAATGGCAGTGAGAAGGAGACCATGCAGTTCCTGAACGACCGCTGGCCAGCTAC  
 CTGGAGAAGGTGCGTCAGCTGGAGCGGACAACGCGGAGCTGGAGAACCTCATCCGGGAGCGGTACAGC  
 AGCAGGAGCCCTTGGTGTGTGCCAGCTACCAGTCTACTTCAAGACCATTGAGGAGCTCCAGCAGAAGAT  
 CCTGTGCAGCAAGTCTGAGAATGCCAGGCTTGTGGTGCAGATCGACAATGCCAAGCTGGCCCTCAGATGAC  
 TTCAGGACCAATATGAGACCGAGCTGTCCCTGCGGCAGCTGGTGGAGTCGGACATCAATGGCCTGCGCA  
 GGATCCTGGATGAGCTGACCCTGTGAGGTCTGACCTGGAGGCCAGGTGGAGTCCCTGAAGGAGGAGCT  
 GCTGTGCCTCAAGCAGAACCATGAGCAGGAGGTTAACACCCTGCGCTGCCAGCTTGGAGACCGCCTCAAC  
 GTGGAGGTGGACGCTGCTCCACTGTGGACCTGAACCAGGTCCTGAATGAGACCAGGAGTCAGTATGAGG  
 CCCTGGTGGAAACCAACCGCAGGGAAGTGGAGCAATGGTTCGCCACGCAGACCGAGGAGCTGAACAAGCA  
 GGTGGTATCCAGCTCGGAGCAGCTGCAGTCTACCAGGCGGAGATCATCGAGCTGAGACGCACGGTCAAT  
 GCCCTGGAGATCGAGCTGCAGGCCAGCACAACCTGCGAGACTCTGGAAAACACGCTGACAGAGAGCG  
 AGGCCCGCTACAGCTCCAGCTGTCCAGGTGCAGAGACTGATCACCAACGTGGAGTCCCAGCTGGCGGA  
 GATCCGCAAGTGCCTGGAGCGGAGAACCAGGAGTATCAGGTGCTGCTGGACGTGCGGGCGCGGCTGGAG  
 TGTGAGATCAACACGTACCGGAGCTGTGGAGAGCGAGGACTGCAAGCTCCCCTCAACCCTGCGCCA  
 CAACCAATGCATGTGACAAGTCCACTGGGCCCTGTATCTCTAATCCCTGTGGCCTACGTGCTCGGTGTGG  
 GCCTTGCAACACATTTGGGTAC

ACGCGTACGCGGCCGCTCGAG - GFP Tag - GTTTAA



[View online »](#)

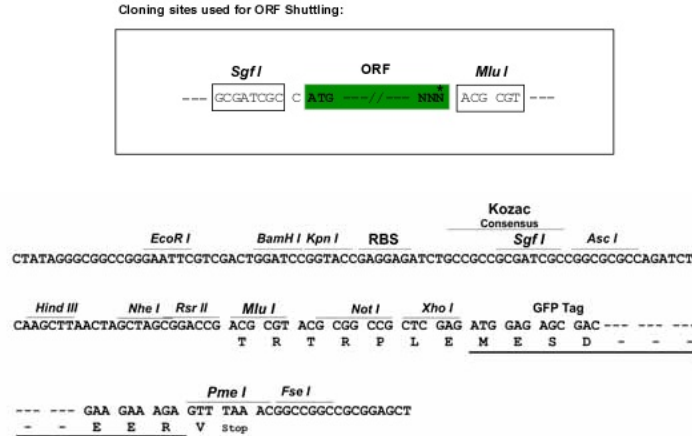
**Protein Sequence:** >RG214177 representing NM\_004138  
Red=Cloning site Green=Tags(s)

MSYSCGLPSLSCRTSCSSRPCVPPSCHGCTLPGACNIPANVSNCNWFCEGSFNGSEKETMQFLNDRASY  
 LEKVRQLERDNAELENLIRERSQQQEPLVCASYQSYFKTIEELQKILCSKSENARLVVQIDNAKLASDD  
 FRTKYETELSLRQLVESDINGLRRILDELTLCRSDLEAQVESLKEELLCLKQNHQEAVNTLRCQLGDRLN  
 VEVDAAPTVDLNLQVLNETRSQYEALVETNRREVEQWFATQTEELNKQVVSSEQLQSYQAEIIELRRTVN  
 ALEIEIQAQHNLRDSLENTLSEARYSSQLSQVORLITNVESQLAEIRSDLERQNYEQVLLDVRARLE  
 CEINTYRSLLESEDCKLPSNPCATTNACDKSTGPCISNPCGLRARCGPCNTFGY

TRTRPLE - GFP Tag - V

**Restriction Sites:** SgfI-MluI

**Cloning Scheme:**



**ACCN:** NM\_004138

**ORF Size:** 1212 bp

**OTI Disclaimer:** The molecular sequence of this clone aligns with the gene accession number as a point of reference only. However, individual transcript sequences of the same gene can differ through naturally occurring variations (e.g. polymorphisms), each with its own valid existence. This clone is substantially in agreement with the reference, but a complete review of all prevailing variants is recommended prior to use. [More info](#)

**OTI Annotation:** This clone was engineered to express the complete ORF with an expression tag. Expression varies depending on the nature of the gene.

**Components:** The ORF clone is ion-exchange column purified and shipped in a 2D barcoded Matrix tube containing 10ug of transfection-ready, dried plasmid DNA (reconstitute with 100 ul of water).

**Reconstitution Method:**

1. Centrifuge at 5,000xg for 5min.
2. Carefully open the tube and add 100ul of sterile water to dissolve the DNA.
3. Close the tube and incubate for 10 minutes at room temperature.
4. Briefly vortex the tube and then do a quick spin (less than 5000xg) to concentrate the liquid at the bottom.
5. Store the suspended plasmid at -20°C. The DNA is stable for at least one year from date of shipping when stored at -20°C.

**RefSeq:** [NM\\_004138.4](#)

**RefSeq Size:** 1252 bp

**RefSeq ORF:** 1215 bp

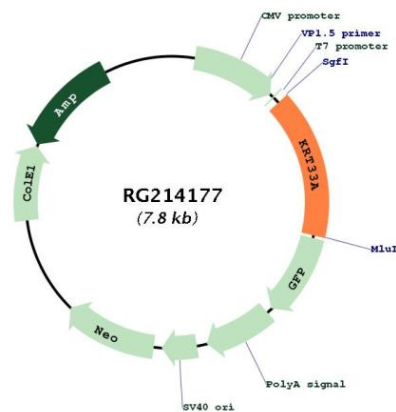
**Locus ID:** 3883

**UniProt ID:** [O76009](#)

**Cytogenetics:** 17q21.2

**Gene Summary:** This gene encodes a member of the keratin gene family. This gene is one of multiple type I hair keratin genes that are clustered in a region of chromosome 17q12-q21 and have the same direction of transcription. As a type I hair keratin, the encoded protein is an acidic protein which heterodimerizes with type II keratins to form hair and nails. There are two isoforms of this protein, encoded by two separate genes, keratin 33A and keratin 33B. [provided by RefSeq, May 2012]

### Product images:



Circular map for RG214177