

## Product datasheet for **RG214121**

### Desmoglein 4 (DSG4) (NM\_177986) Human Tagged ORF Clone

#### Product data:

Product Type:	Expression Plasmids
Product Name:	Desmoglein 4 (DSG4) (NM_177986) Human Tagged ORF Clone
Tag:	TurboGFP
Symbol:	Desmoglein 4
Synonyms:	CDGF13; CDHF13; HYPT6; LAH
Mammalian Cell Selection:	Neomycin
Vector:	pCMV6-AC-GFP (PS100010)
E. coli Selection:	Ampicillin (100 ug/mL)
ORF Nucleotide Sequence:	>RG214121 representing NM_177986 Red=Cloning site Blue=ORF Green=Tags(s)

TTTTGTAATACGACTCACTATAGGGCGGCCGGAATTCGTCGACTGGATCCGGTACCGAGGAGATCTGCC  
GCC**CGATCGCC**

ATGGATTGGCTCTTCTTCAGAAACATTTGCCTTTTGATCATTCTAATGGTGGTGATGGAAGTAAACAGTG  
AATTTATTGTTGAGGTGAAGGAATTTGACATTGAAAATGGCACTACAAAATGGCAAACAGTCAGAAGACA  
AAAGCGGGAGTGGATCAAGTTTGCCGACGCTGTCGAGAAGGAGAGGACAACCTCGAAGAGGAACCCATT  
GCCAAAATTCGATCAGACTGCGAATCGAACCGAAGATAACATACCGGATTTCTGGAGTAGGGATTGATC  
GACCACCATATGGGGTATTCACCATTAATCCTCGCACTGGGAAATTAACATCACTTCAGTGGTAGACAG  
AGAAAATACTCCACTTTTCTTGATCTATTGCCGGCTCTGAATTCACGGGGTGAAGATTTAGAAAAGGCTT  
CTTGAGCTTAGAGTCAAAGTTATGGACATAAATGATAACGCTCCAGTCTTTTCGCAAAGTGATACACAG  
CCAGCATTGAAGAAAATAGTGATGCCAATACATTGGTAGTAAAGTTATGTGCCACAGATGCAGATGAAGA  
AAATCATCTGAATTCTAAAATGCCTACAAGATCGTCTCTCAGGAGCCATCAGGTGCACCCATGTTTCATT  
CTGAATAGGTACACTGGAGAAGTCTGCACCATGTCAGTTTCTTGACAGAGAGCAACACAGTATGTACA  
ACCTGGTTGTGAGAGGCTCAGATCGGGATGGAGCTGCAGATGGACTGTCTTCTGAGTGTGACTGTAGAAT  
CAAGTTTTAGACGTCAACGATAATTTCCACCTTAGAGAAAATTCATACTCAGCCAGTATTGAAGAG  
AATTTGTTAAGTTCGGAAGTATACGATTACAAGCAATTGATCTTGATGAAGAAGCACTGATAACTGGT  
TGGCTCAATATTTAATTCTCTCGAAAATGATGGGAATTGGTTTCGATATTCAAACAGATCCACAAACCAA  
TGAAGGCATTTTGAAGTTGTCAAGATGCTGGATTATGAACAAGCACCTAACATTCAGCTTAGTATCGGA  
GTTAAAAACCAAGCTGATTTCACTACTCCGTTGCTTCTCAATTCAAAATGCACCAACCCCTGTGAGAA  
TTCAAGTTGTTGATGTGAGAGAAGGACCTGCATTTTCATCCAAGTACTATGGCTTTTAGTGTGCGGGAAGG  
AATAAAAGGAAGTTCCTTATTGAATTATGTGCTTGGCACATATACAGCCATAGATTTGGACACAGGAAAC  
CCTGCAACAGATGTCAGATATATCATAGGGCATGATGCAGGCAGCTGGTTAAAAATTGATTCAAGAAGT  
GTGAGATACAATTTCTAGAGAATTTGATAAGAAGTCAAAATATATTATCAATGGGATATACACAGCAGA  
GATCCTGGCTATAGATGATGGCTCTGAAAAACAGCTACAGGAACCATATGTATTGAGGTTCTGATATC



[View online »](#)

```
AATGATTATTGTCCAAACATTTTCTGAAAGAAGAACCATCTGCATTGACTCTCCATCAGTCCTTATCT
CTGTTAATGAACATTCTTATGGGTCTCCGTTTACTTTCTGTGTTGTTGATGAGCCACCAGGAATAGCTGA
CATGTGGGATGTCAGATCAACAAATGCTACCTCGGCAATCCTTACGGCTAAGCAGGTTTTATCTCCAGGA
TTTTATGAAATCCCAATCCTGGTGAAGGACAGCTATAACAGAGCATGTGAATTGGCACAATGGTGCAGT
TATATGCCTGTGATTGCGATGACAACCACATGTGCCTGGACTCTGGTCCCGGGGCATCTACACAGAGGA
CATAACTGGTGACACGTATGGCCTGTCACTGAAGACCAAGCTGGAGTTTCAAATGTTGGTCTTGGACCA
GCAGGGATTGGCATGATGGTTCTGGGCATCCTGCTACTGCTTTTGGCTCCACTCTTGTGCTCCTGTGTT
GCTGCAAACAGAGACAGCCAGAAGGCCTGGGAACAAGATTTGCTCCTGTGCCTGAGGGCGGAGAAGGAGT
GATGCAGTCTTGAGAATTGAAGGGGCCATCCCGAGGACAGGGATGTGTCAAATATATGTGACCCCATG
ACAGCCTCAAATACCCAGGATCGGATGGATTCTCTGAAATCTACACCAACACCTATGCAGCCGGGGCA
CGGTGGAAGGAGGTGATCGGGAGTGGAGCTCAACACAGGTATGGGGACAGCCGTTGGCCTCATGGCCG
AGGGGCCGAGGAGCCTCAGGGCCGCAAGGAAGAGGAGCTTACCATGGGAACCCTGCGGGACTACGCT
GACGCAGACATCAACATGGCTTCTTGGACAGCTACTTCTCGGAGAAAGCGTATGCTTATGCAGATGAAG
ATGAAGGTCGACCAGCAATGACTGCTTGCTCATTATGACCACGAGGGAGTCGGGTCTCCCGTAGGCTC
TATTGGTTGTTGCAGTTGGATTGTGGATGACTTAGATGAAAGCTGCATGGAACCTTATAGTCCAAAATTT
AGGACTCTTGCTGAGATCTGCTTAAACACAGAAATGAACCATTTCTTACACACAGGCTGTATACCAA
TCAGTACTGACCTCCCTTGTCTCGGACCTAATTACTTTGTTAATGAATCTTCAGGATTGACTCCCTCAGA
AGTTGAATCCAAGAAGAAATGGCAGCATCTGAACCCGTTGTCATGGGGATATTATTGTGACTGAGACT
TACGGTAAATGCTGATCCATGTGTGCAACCCACTACAATATTTTTGATCCTCAGCTTGCACCCAATGTTG
TAGTAACCGAAGCAGTAATGGCACCTGTCTATGATATTCAGGGAATATTTGTGTACCTGCTGAGTTAGC
AGATTACAACAATGTAATCTATGCTGAGAGAGTACTGGCTAGTCTGGTGTGCCTGACATGAGCAATAGT
AGCAGGACTGAGGTTGTATGGACCTGTGATGAGCGGCAATATTTAGTAGGGCCAGAAATCAAGTGA
TGCAAATGATGAGTCCAGACCTTCCCATAGGCCAAACCGTTGGCTCCACATCCCCAATGACATCTCGACA
CAGAGTAACACGATACAGTAACATACATTACACCCAACAG
```

ACGCGTACGCGGCCGCTCGAG – GFP Tag – GTTTAA

**Protein Sequence:**

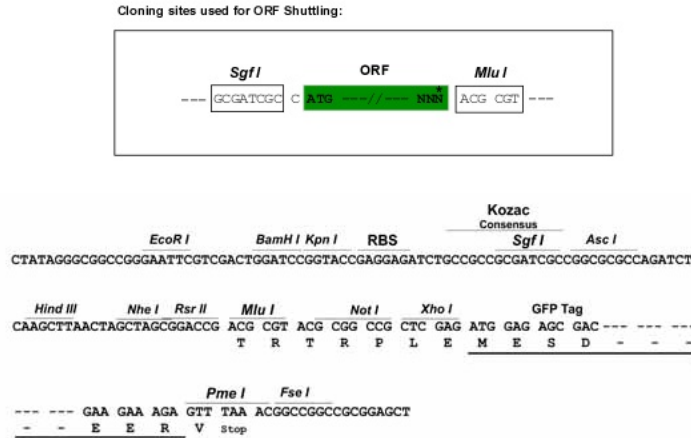
>RG214121 representing NM\_177986  
 Red=Cloning site Green=Tags(s)

```
MDWLFRRNICLLIILMVMEVNSEFIVEVKEFDIENGTTKWQTVRRQKREWIKFAAACREGEDNSKRNPI
AKIRSDCESNQKITRYISGVGIDRPPYGVFTINPRTGEINITSVVDREITPLFLIYCRALNSRGEDLERP
LELRVKVMDINDNAPVFSQSVYASIEENSANTLVVKLCATDADEENHLNSKIAYKIVSQEPSGAPMFI
LNRYTGEVCTMSSFLDREQHSMYNLVVRSRDRGAADGLSSECDRIKVLVDVNDNFPLEKTSYSASIEE
NCLSSELIRLQAIDLDEEGDNWLAQYLILSGNDGNWFDIQDTPQTNEGILKVVKMLDYEQAPNIQLSIG
VKNQADFHYSVASQFMHPTPVRIQVVDVREGPAFHPSTMAFSVREGIKGSLLNYVLGTYAIDLDTGN
PATDVRYIIGHDAGSWLKIDSRTGEIQFSREFDKKSKYIINGIYAEILAIIDDGSGKTATGTICIEVPDI
NDYCPNIFPERRTICIDSPSVLISVNEHSYGSPTFCVVDPEPPIADMWDVRSNTATSAILTAKQVLSPG
FYEIPILVKDSYNRACELAQMVQLYACDCDDNHMCLDSGAAGIYTEDITGDTYGPVTEQAGVSNVGLGP
AGIGMMVLGILLLLLAPLLLLCCCKQRQPEGLTRFAPVPEGGEGVMQSWRIEGAHPEDRDVSNICAPM
TASNTQDRMDSSEIYNTYAAGSTVEGGVSGVELNTGMGTAVGLMAAGAAGASGAARKRSSTMGTLRDYA
DADINMAFLDSYFSEKAYAYADEDEGRANDCLLIYDHEGVGSPVGSIGCCSWIVDDLDESCMETLDPKF
RTLAEICLNTEIEPFPHQACIPISTDLPLLPNYFVNESSGLTPSEVEFQEEMAASEPVVHGDIIIVTET
YGNADPCVQPTTIIIFDQLAPNVVVTEAVMAPVYDIQGNICVPAELADYNNVIYAERVLASPGVPDMSNS
STTEGCMGPVMSGNILVGPEIQVMQMMSPDLPIGQTVGSTSPMTRSRRVTRYNSNIHYTQQ
```

TRTRPLE – GFP Tag – V

**Restriction Sites:**

Sgfl-Mlul

**Cloning Scheme:**


**ACCN:** NM\_177986

**ORF Size:** 3120 bp

**OTI Disclaimer:** The molecular sequence of this clone aligns with the gene accession number as a point of reference only. However, individual transcript sequences of the same gene can differ through naturally occurring variations (e.g. polymorphisms), each with its own valid existence. This clone is substantially in agreement with the reference, but a complete review of all prevailing variants is recommended prior to use. [More info](#)

**OTI Annotation:** This clone was engineered to express the complete ORF with an expression tag. Expression varies depending on the nature of the gene.

**Components:** The ORF clone is ion-exchange column purified and shipped in a 2D barcoded Matrix tube containing 10ug of transfection-ready, dried plasmid DNA (reconstitute with 100 ul of water).

**Reconstitution Method:**

1. Centrifuge at 5,000xg for 5min.
2. Carefully open the tube and add 100ul of sterile water to dissolve the DNA.
3. Close the tube and incubate for 10 minutes at room temperature.
4. Briefly vortex the tube and then do a quick spin (less than 5000xg) to concentrate the liquid at the bottom.
5. Store the suspended plasmid at -20°C. The DNA is stable for at least one year from date of shipping when stored at -20°C.

**RefSeq:** [NM\\_177986.2](#), [NP\\_817123.1](#)

**RefSeq Size:** 3579 bp

**RefSeq ORF:** 3123 bp

Locus ID: 147409

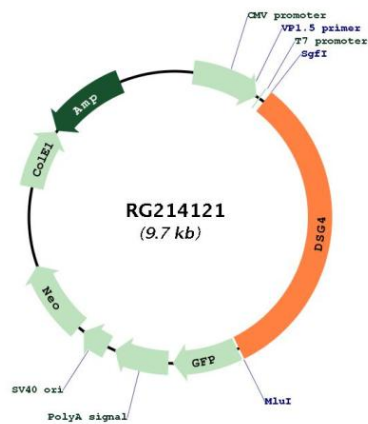
UniProt ID: [Q86SJ6](#)

Cytogenetics: 18q12.1

Protein Families: Transmembrane

**Gene Summary:** This gene encodes a member of the desmoglein subgroup of desmosomal cadherins. The encoded preproprotein is proteolytically processed to generate the mature protein. This protein is a transmembrane component of desmosomes and may play a role in cell-cell adhesion in epithelial cells. Mutations in the gene are associated with localized autosomal recessive hypotrichosis and monilethrix, characterized by impaired hair growth. [provided by RefSeq, May 2016]

**Product images:**



Circular map for RG214121