

## Product datasheet for **RG214117**

### CSGLCAT (CHPF2) (NM\_019015) Human Tagged ORF Clone

#### Product data:

Product Type:	Expression Plasmids
Product Name:	CSGLCAT (CHPF2) (NM_019015) Human Tagged ORF Clone
Tag:	TurboGFP
Symbol:	CHPF2
Synonyms:	chPF-2; ChSy-3; CSGICA-T; CSGICAT
Mammalian Cell Selection:	Neomycin
Vector:	pCMV6-AC-GFP (PS100010)
E. coli Selection:	Ampicillin (100 ug/mL)



[View online »](#)

**ORF Nucleotide  
Sequence:**

>RG214117 representing NM\_019015  
 Red=Cloning site Blue=ORF Green=Tags(s)

TTTTGTAATACGACTCACTATAGGGCGGCCGGAATTCGTCGACTGGATCCGGTACCGAGGAGATCTGCC  
 GCC**CGCATCGC**

ATGCGACTGAGCTCCCTGTTGGCTCTGCTGCGGCCAGCGCTTCCCCTCATCTTAGGGCTGTCTCTGGGGT  
 GCAGCCTGAGCCTCCTGCGGGTTTCTGGATCCAGGGGAGGGAGAAGATCCCTGTGTCGAGGCTGTAGG  
 GGAGCGAGGAGGGCCACAGAATCCAGATTCCAGAGCTCGGCTAGACCAAAGTGATGAAGACTTCAAACCC  
 CGGATTGTCCCCTACTACAGGGACCCCAACAAGCCCTACAAGAAGGTGCTCAGGACTCGGTACATCCAGA  
 CAGAGCTGGGCTCCCGTGAAGCGTTGCTGGTGGCTGTCTGACCTCCCGAGCTACACTGTCCACTTTGGC  
 CGTGGCTGTGAACCGTACGGTGGCCCATCACTTCCCTCGTTACTCTACTTCACTGGGCAGCGGGGGGCC  
 CGGGCTCCAGCAGGGATGCAGGTGGTGTCTCATGGGGATGAGCGGCCCGCTGGCTCATGTCAGAGACCC  
 TCGCCACCTTACACACACTTTGGGGCCGACTACGACTGGTTCTTCATCATGCAGGATGACACATATGT  
 GCAGGCCCGCCGCTGGCAGCCCTTGCTGGCCACCTCAGCATCAACCAAGACCTGTACTTAGGCCGGGCA  
 GAGGAGTTCATTGGCGCAGGCGAGCAGGCCCGGTACTGTCTATGGGGGCTTTGGCTACCTGTTGTACGGA  
 GTCTCCTGCTTCGTCTGCGGCCACATCTGGATGGCTGCCGAGGAGACATTCTCAGTGCCCGTCTGACGA  
 GTGGCTTGGACGCTGCCTCATTGACTCTCTGGCGTCGGCTGTGTCTCACAGCACCAGGGGAGCAGTAT  
 CGCTCATTTGAACTGGCCAAAAATAGGGACCTGAGAAGGAAGGAGCTCGGCTTTCTGAGTGCCCTTCG  
 CCGTGACCCCTGTCTCCGAAGGTACCCTCATGTACCGGCTCCACAAACGCTTCAGCGCTCTGGAGTTGGA  
 GCGGGCTTACAGTGAAATAGAACAACTGACAGGCTCAGATCCGGAACCTGACCGTGTGACCCCGAAGGG  
 GAGGCAGGGCTGAGCTGGCCCGTTGGGCTCCCTGCTCCTTTCACACCACACTCTCGCTTTGAGGTGCTGG  
 GCTGGGACTACTTCACAGAGCAGCACACTTCTCCTGTGCAGATGGGGCTCCCAAGTGCCCACTACAGGG  
 GGCTAGCAGGGCGGACGTGGGTGATGCGTTGGAGACTGCCCTGGAGCAGCTCAATCGGCGCTATCAGCCC  
 CGCCTGCGCTTCCAGAAGCAGCGACTGCTCAACGGCTATCGGCGCTTCGACCCAGCACGGGGCATGGAGT  
 ACACCCTGGACCTGCTGTTGGAATGTGTGACACAGCGTGGGCACCGGCGGGCCCTGGCTCGCAGGGTCAG  
 CCTGCTGCGGCCACTGAGCCGGGTGAAATCCTACCTATGCCCTATGTCACTGAGGCCACCCGAGTGCAG  
 CTGGTGTGCCACTCCTGGTGGCTGAAGCTGCTGCAGCCCGGCTTTCTCGAGGCCTTTGCAGCCAATG  
 TCCTGGAGCCACGAGAATGCATTGCTCACCTGTTGCTGGTCTACGGGCCACGAGAAGGTGGCCGTGG  
 AGCTCCAGACCCATTTCTTGGGGTGAAGGCTGCAGCAGCGGAGTTAGAGCGACGGTACCCTGGGACGAGG  
 CTGGCCTGGCTCGCTGTGCGAGCAGAGGCCCTTCCCAGGTGCGACTCATGGACGTGGTCTCGAAGAAGC  
 ACCCTGTGGACACTCTCTTCTTCTTACCACCGTGTGGACAAGGCTGGGCCCGAAGTCTCAACCGCTG  
 TCGCATGAATGCCATCTCTGGCTGGCAGGCCTTTTCCAGTCCATTTCCAGGAGTTCAATCCTGCCCTG  
 TCACCACAGAGATCACCCCAAGGGCCCCCGGGGCTGGCCCTGACCCCCCTCCCTCCTGGTGTGACC  
 CCTCCCGGGGGGCTCCTATAGGGGGGAGATTTGACCGGCAGGCTTCTGCGGAGGGCTGCTTCTACAACGC  
 TGACTACCTGGCGGCCGAGCCCGGCTGGCAGGTGAACTGGCAGGCCAGGAAGAGGAGGAAGCCCTGGAG  
 GGGCTGGAGGTGATGGATGTTTTCTCCGGTCTCAGGGCTCCACCTCTTTCGGGCCGTAGAGCCAGGGC  
 TGGTGCAGAACTTCTCCCTGCGAGACTGCAGCCACGGCTCAGTGAAGAACTCTACCACCGCTGCCGCT  
 CAGCAACCTGGAGGGGCTAGGGGGCCGTGCCAGCTGGCTATGGCTCTCTTTGAGCAGGAGCAGGCCAAT  
 AGCACT

**ACGCGT**ACGCGGCCGCTCGAG – GFP Tag – GTTTAA

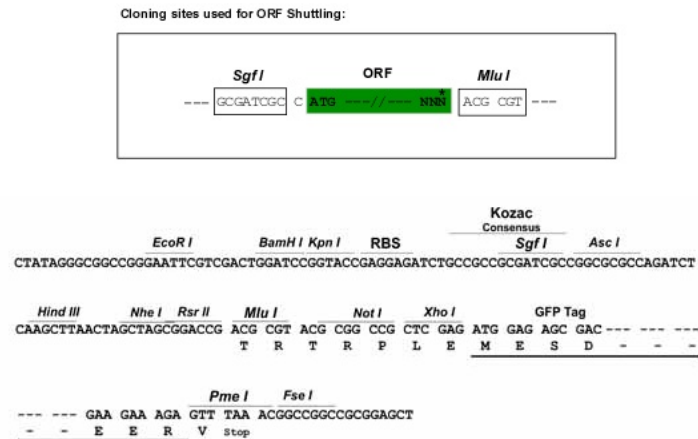
Protein Sequence: >RG214117 representing NM\_019015  
 Red=Cloning site Green=Tags(s)

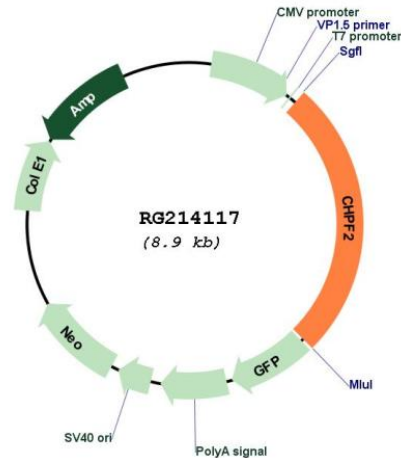
MRLSSLLALLRPALPLILGLSLGCSLSLLRVSWIQGEGEDPCVEAVGERGGPQNPDSRARLDQSDDEDFK  
 RIVPYRDPNPKYKKVLRTRYIQTGLSRERLLVAVLTSRATLSTLAVAVNRTVAHHFPRLLYFTGQGA  
 RAPAGMQVVSHGDERPAWLMSETLRHLHTFGADYDWFIMQDDTYVQAPRLAALAGHLSINQDLYLGRA  
 EEFIGAGEQARYCHGGFYLLSRSLLLRLRPHLDGCRGDILSARPDEWLGRCLIDSLGVGCYSQHQQQY  
 RSFELAKNRDPEKEGSSAFLSAFAVHPVSEGTLMYRLHKRFSALELERAYSEIEQLQAQIRNLTVLTPEG  
 EAGLSWPVGLPAPFTPHSRFEVLGWDYFTEQHTFSCADGAPKCPQGASRADVGDALETALEQLNRRYQP  
 RLRFQKQRLNGYRRFDPARGMEYTLDLLLECVTQRGHRRALARRVSLRPLSRVEILPMPYVTEATRVQ  
 LVLPLLVAAAAAPFLAFAANVLEPREHALLTLLVYGPREGGRGAPDPFLGVKAAAAELERRYPGTR  
 LAWLAVRAEAPSQVRLMDVVSKKHPVDTLFFLTWTRPGPEVLNRCRMNAISGWQAFPPVHFQEFNPAL  
 SPQRSPPGPPGAGDPSPGADPSRGAPIGGRFDRQASAEGCFYNADYLAARARLAGELAGQEEEEALE  
 GLEVMDFVFLRFSGLHLFRAVEPLVQKFSLRDCSPRLSEELYHRCRLSNLEGLGGRAQLAMALFEQEQA  
 N  
 ST

TRTRPLE – GFP Tag – V

Restriction Sites: SgfI-MluI

Cloning Scheme:



**Plasmid Map:**


**ACCN:** NM\_019015

**ORF Size:** 2316 bp

**OTI Disclaimer:** The molecular sequence of this clone aligns with the gene accession number as a point of reference only. However, individual transcript sequences of the same gene can differ through naturally occurring variations (e.g. polymorphisms), each with its own valid existence. This clone is substantially in agreement with the reference, but a complete review of all prevailing variants is recommended prior to use. [More info](#)

**OTI Annotation:** This clone was engineered to express the complete ORF with an expression tag. Expression varies depending on the nature of the gene.

**Components:** The ORF clone is ion-exchange column purified and shipped in a 2D barcoded Matrix tube containing 10ug of transfection-ready, dried plasmid DNA (reconstitute with 100 ul of water).

**Reconstitution Method:**

1. Centrifuge at 5,000xg for 5min.
2. Carefully open the tube and add 100ul of sterile water to dissolve the DNA.
3. Close the tube and incubate for 10 minutes at room temperature.
4. Briefly vortex the tube and then do a quick spin (less than 5000xg) to concentrate the liquid at the bottom.
5. Store the suspended plasmid at -20°C. The DNA is stable for at least one year from date of shipping when stored at -20°C.

**RefSeq:** [NM\\_019015.2](#), [NP\\_061888.1](#)

**RefSeq Size:** 3970 bp

**RefSeq ORF:** 2319 bp

**Locus ID:** 54480

**UniProt ID:** [Q9P2E5](#)

**Cytogenetics:** 7q36.1

**Protein Pathways:** Chondroitin sulfate biosynthesis, Metabolic pathways

**Gene Summary:** Transfers glucuronic acid (GlcUA) from UDP-GlcUA to N-acetylgalactosamine residues on the non-reducing end of the elongating chondroitin polymer. Has no N-acetylgalactosaminyltransferase activity.[UniProtKB/Swiss-Prot Function]