

Product datasheet for **RG214099**

Attractin (ATRN) (NM_139321) Human Tagged ORF Clone

Product data:

Product Type:	Expression Plasmids
Product Name:	Attractin (ATRN) (NM_139321) Human Tagged ORF Clone
Tag:	TurboGFP
Symbol:	ATRN
Synonyms:	DPPT-L; MGCA
Mammalian Cell Selection:	Neomycin
Vector:	pCMV6-AC-GFP (PS100010)
E. coli Selection:	Ampicillin (100 ug/mL)
ORF Nucleotide Sequence:	>RG214099 representing NM_139321 Red=Cloning site Blue=ORF Green=Tags(s)

TTTTGTAATACGACTCACTATAGGGCGGCCGGAATTCGTCGACTGGATCCGGTACCGAGGAGATCTGCC
GCC**CGATCGCC**

ATGGTGGCTGCAGCGCGGCAACTGAGGCAAGGCTGAGGAGGAGGACGGCGGCGACGGCAGCGCTCGCGG
GCAGGAGCGGGCGGCGCACTGGGACTGGGACGTGACCAGGGCTGGGAGGCGGGGCTGGGGCCGGGCT
GCGCCTCCCGGGCTGCTGTCTCCACCGCTGCGGCCACGGCTGCTGCTGCTGTTGTTGCTCTCGCCG
CCGCTGCTGCTGCTGCTGCCCTGTGAGGCCGAGGCCGCGGCGGGCGGGCGGGTGTGGGCTCAG
CCGACGCCGAGGCAAGGAATGTGACCGGCCCTGTGTCAACGGCGGTCGCTGCAACCTGGCACCAGCCA
GTGCGTCTGCCCCGCGGCTGGGTGGGCGAGCAATGCCAGCACTGCGGGGCGGCTTCAGACTAACTGGA
TCTTCTGGGTTTGTGACAGATGGACCTGAAAATTATAAATACAAAACGAAGTGCACGTGGCTCATTGAAG
GACAGCCAAATAGAATAATGAGACTTCGTTTCAATCATTTTGTACAGAGTGTAGTTGGGACCATTATA
TGTTTATGATGGGGACTCAATTTATGCACCGCTAGTTGCTGCATTTAGTGGCCTCATTGTTCTGAGAGA
GATGGCAATGAGACTGTCCCTGAGGTTGTTGCCACATCAGGTTATGCCTTGTGCATTTTTTTAGTGATG
CTGCTTATAATTTGACTGGATTTAATATTACTTACAGTTTTGATATGTGTCCAAATAACTGCTCAGGCCG
AGGAGAGTGTAAAGATCAGTAATAGCAGCGATACTGTTGAATGTGAATGTTCTGAAAACGGAAAGGTGAA
GCATGTGACATTCCTCACTGTACAGACAACTGTGGTTTTTCTCATCGAGGCATCTGCAATCAAGTGATG
TCAGAGGATGCTCCTGCTTCTCAGACTGGCAGGGTCTGGATGTTCAAGTTCCTGTACCAGCTAACCCAGTC
ATTTTGGACTCGAGAGGAATATTCTAACTTAAAGCTCCCCAGAGCATCTCATAAAGCTGTGGTCAATGGA
AACATTATGTGGGTTGTTGGAGGATATATGTTCAACCACTCAGATTATAACATGTTTCTAGCGTATGACC
TTGCTTCTAGGGAGTGGCTTCCACTAAACCGTTCTGTGAACAATGTGGTTGTTAGATATGGTCATTCTTT
GGCATTATACAAGGATAAAATTTACATGTATGGAGGAAAAATTGATTCAACTGGGAATGTGACCAATGAG
TTGAGAGTTTTTACATTCATAATGAGTCATGGGTGTTGTTGACCCCTAAGGCAAAGGAGCAGTATGCAG
TGGTTGGCACTCTGCACACATTGTTACTGAAGAATGGCCGAGTGGTCATGCTGGTCATCTTTGGTCA
CTGCCCTCTATGGATATATAAGCAATGTGCAGGAATATGATTTGGATAAGAACACATGGAGTATATTA



[View online »](#)

CACACCCAGGGTGCCCTTGTGCAAGGGGTTACGGCCATAGCAGTGTTTACGACCATAGGACCAGGGCCC
TATACGTTTCATGGTGGCTACAAGGCTTTTCAGTGCCAATAAGTACCGGCTTGCAGATGATCTCTACCGATA
TGATGTGGATACCCAGATGTGGACCATTCTTAAGGACAGCCGATTTTTCCGTTACTTGCACACAGCTGTG
ATAGTGAGTGGAAACCATGCTGGTGTGGAGGAAACACACAATGACACATCTATGAGCCATGGCGCCA
AATGCTTCTCTCAGATTTTCATGGCCTATGACATTGCCTGTGACCCTGGTCAGTGCTTCCCAGACCTGA
TCTCCACCATGATGTCAACAGATTTGGCCATTTCAGCAGCTTACACAACAGCACCATGTATGTGTCCGT
GGTTTCAATAGTCTCCTCCTCAGCGACATCCTGGTATTACCTCGGAACAGTGTGATGCGCATCGGAGTG
AAGCCGCTTGTAGCAGCAGGACCTGGTATTCGGTGTGTGGAAACACAGGGTCGTCTCAGTGTATCTC
GTGGGCGCTGGCAACTGATGAACAAGAAGAAAAGTAAAAATCAGAATGTTTTTCCAAAAGAACTCTTGAC
CATGACAGATGTGACCAGCACACAGATTGTACAGCTGCACAGCCAACACCAATGACTGCCACTGGTGCA
ATGACCATTGTGTCCCAGGAACCACAGCTGCTCAGAAGGCCAGATCTCCATTTTTAGGTATGAGAATTG
CCCCAAGGATAACCCCATGTACTACTGTAAACAAGAAGACCAGCTGCAGGAGCTGTGCCCTGGACCAGAAC
TGCCAGTGGGAGCCCGAATCAGGAGTGCATTGCCCTGCCGAAAATATCTGTGGCATTGGCTGGCATT
TGGTTGAAAACATGTTTGAATAACTACTGCAAGGAGAATTATGACAATGTAAATGTTCTGTAG
GAACCACAATGCCCTTTGGCTTCTTACAACCCAGAAGAAGTGAATTTGCTTAAAGCAGCTGCGA
ATAATGCAGTCATCTCAGAGCATGTCCAAGCTCACCTTAACCCCATGGGTGCGCCTTCGGAAGATCAATG
TGTCTACTGGTGTGGGAAGATATGTCCCATTTACAAATAGTTTACTACAGTGGATGCCGTCTGAGCC
CAGTGATGCTGGATTCTGTGGAATTTATCAGAACCAGTACTCGGGGACTGAAGGCTGCAACCTGCATC
AACCCACTCAATGGTAGTGTCTGTGAAAGGCTGCAAACCACAGTGTAAAGCAGTCCCGACACCATGTG
CCTTGAGGACAGCATGTGGAGATTGACCAGCGGCAGCTCTGAGTGCATGTGGTGCAGCAACATGAAGCA
GTGTGTGGACTCCAATGCCTATGTGGCTCCTTCCCTTTGGCCAGTGTATGGAATGGTATACGATGAGC
ACCTGCCCCCTGAAAATGTTCCAGCTACTGTACCTGTAGTATTGCTTGGAGCAACCAGGCTGTGGCT
GGTGTACTGATCCAGCAATACTGGCAAAGGAAATGCATAGAGGGTTCCTATAAAGACCAGTGAAGAT
GCCTTCGCAAGCCCTACAGGAAATTTCTATCCACAGCCCTGCTCAATTCAGCATGTGTCTAGAGGAC
AGCAGATACAACCTGGTCTTTTCACTGTCCAGCTTGCCAATGCAACGGCCACAGTAAATGCATCAATC
AGAGCATCTGTGAGAAGTGTGAGAACCTGACCACAGGCAAGCACTGCGAGACCTGCATATCTGGCTTCTA
CGGTGATCCCACCAATGGAGGAAATGTCAGCCATGCAAGTGAATGGGCACGCTCTCTGTGCAACACC
AACACGGGCAAGTGTCTGCACCACCAAGGGCGTCAAGGGGACGAGTGCAGCTATGTGAGGTAGAAA
ATCGATACCAAGGAAACCCTCTCAGAGGAACATGTTATTACTCTTCTTATTGACTATCAGTTCACCTT
TAGTCTATCCCAGGAAGATGATCGCTATTACACAGCTATCAATTTTGGGCTACTCTGACGAACAAAAC
AGGGATTTGGACATGTTCAATGCCTCCAAGAATTTCAACCTCAACATCACCTGGGCTGCCAGTTTCT
CAGCTGGAACCCAGGCTGGAGAAGAGATGCCTGTTGTTTCAAAAACCAACATTAAGGAGTACAAAGATAG
TTTCTCTAATGAGAAGTTTGATTTTCGCAACCACCCAAATATCACTTTCTTTGTTTATGTGAGTAATTTT
ACCTGGCCATCAAAATTCAGATTGCCTTCTCTCAGCACAGCAATTTTATGGACCTGGTACAGTCTTTCG
TGACTTTCTCAGTTGTTTCTCTCTTTGCTCCTGGTGGCTGCTGTGTTTGGAAAGTCAAAACAAAGTTG
TTGGGCTCCAGACGTAGAGAGCAACTTCTCGAGAGATGCAACAGATGGCCAGCCGTCCCTTTGCCTCT
GTAATGTGCGCTTGAAACAGATGAGGAGCCTCCTGATCTTATTGGGGGAGTATAAAGACTGTTCCCA
AACCCATTGCACTGGAGCCGTGTTTGGCAACAAAGCCGCTGCTCTCTGTGTTTGTGAGGCTCCCTCG
AGGCTGGGTGGCATCCCTCCTCCTGGGAGTCAAGTCTTGTGTGGCCAGCGCCCTGGTGGACATTTCT
CAGCAGATGCCGATAGTGTACAAGGAGAAGTCAAGGAGCCGTGAGAAACCGGAAGCAGCAGCCCTGCAC
AGCCTGGGACCTGCATC

AGCGGACCGACGCGTACGCGGCCGCTCGAG - GFP Tag - GTTTAA

Protein Sequence: >RG214099 representing NM_139321
 Red=Cloning site Green=Tags(s)

```

MVAAAAATEARLRRRTAATAALAGRSGGPHWDWDVTRAGRPGLGAGLRPLRLLSPPLRPRLLLLLLLLLLSP
PLLLLLLPCEAEAAAAAAVSGSAAAEAKECDRPCVNGGRCNPGTGQCVCAPAGWVGEQCQHCGRFRLTG
SSGFVTDGPGNYKYKTKCTWLIEGQPNRIMRLRFNFHATECSWDHLYVYDGDISIYAPLVAASFGLIVPER
DGNETVPEVVATSGYALLHFFSDAAYNL TGFNITYSFDMPNCSGRGECKISNSSDTECECSENWKGE
ACDIPHCTDNCGFPHRGICNSSDVRGCSFSDWQPGCSVPVPAHQSFWTREYSNLKLPRAHKAHVNG
NIMWVVGGYMFNHSYDYNMVLAYDLASREWLPNRSVNNVVVRYGHSLALYKDKIYMYGGKIDSTGNVTNE
LRVFIHNESWLLTPKAKEQYAVVGHSAHIVTLKNGRVMLVIFGHCPLYGYISNVQEYDLDKNTWSIL
HTQGALVQGGYGHSSVYDHRTRALYVHGGYKAFSANKYRLADDLRYRDVDTQMWTILKDSRFFRYLHTAV
IVSGTMLVFGGNTHNDTSMHSHGAKCFSSDFMAYDIACDRWSVLPDPDLHHDVNRFGHSAVLHNSTMYVFG
GFNSLLSDILVFTSEQCDHRSEAACLAAGPGIRCWNTGSSQCSWALATDEQEELKSECFSKRTLD
HDCRDQHTDCYSTANTNDCHWCNDHCVPRNHSCSEGQISIFRYENC PKDNPMYYCNKKTSCRSCALDQN
CQWEPRNQECIALPENICGIWHLVGNLSCLKIT TAKENYDNAKLF CRNHNALLASLTTQKKVEFVLKQLR
IMQSSSQMSKLTLPWGLRKINVSYWCEWDMSPFTNSLLQWMPSEPSDAGFCGILSEPSTRGLKAATCI
NPLNGSVCPANHSAKQCRTPCALRTACGDCTSGSSECMWCSNMKQCVDSNAYVASFPFGQCMEWYMS
TCPPECSGYCTCSHCLEQPGCWCTDPSNTGKGCIEGSYKGPVKMPSQAPTGNFYQP LLSNSMCLD
SRYNWSFIHCPACQCNHSHKCIINQSIKECENLTTGKHCETCISGFYGDPTNGGKQPCCKNGHASL CNT
NTGKCFCTTKGVKGDCEQLCEVENRYQGNPLRGTCYYTLLIDYQFTFSLSQEDDRYYTAINFVATPDEQN
RDLDMFINASKNFNLNITWAASF SAGTQAGEEMPVVS KTNIKEYKDSFSNEKFDNRHNPNI TFFVYSNF
TWP IKIQIAFSQHSNFM DLVQFFVTFSCFL SLLLVA AVVWKIKQSCWASRRRREQLLREM QMASRPFAS
VNVALETDEEPPDLIGGSIKTVPKPIALEPCFGNKA AVL SVFVRLPRGLGGIPPPGQSGLAVASALVDIS
QQMPIVYKEKSGAVRNRKQPPAQP GTCI
  
```

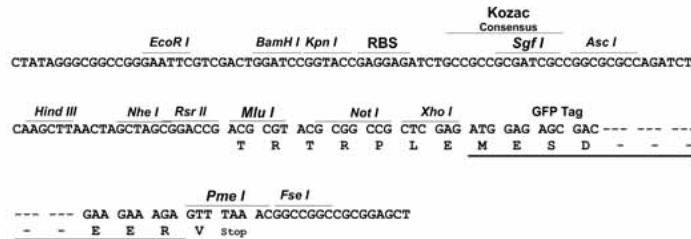
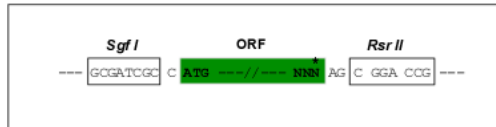
SGPTRRRLRLE - GFP Tag - V

Restriction Sites:

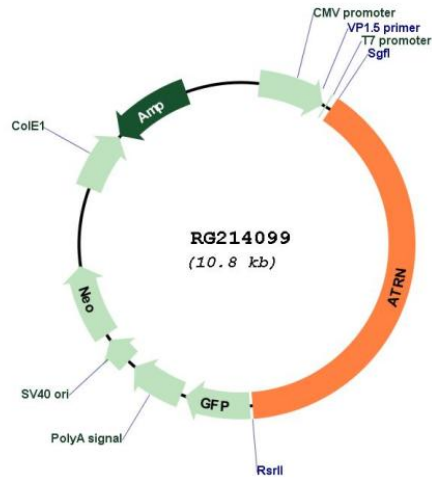
SgfI-RsrII

Cloning Scheme:

Cloning sites used for ORF Shutting:



Plasmid Map:



ACCN: NM_139321

ORF Size: 4287 bp

OTI Disclaimer: The molecular sequence of this clone aligns with the gene accession number as a point of reference only. However, individual transcript sequences of the same gene can differ through naturally occurring variations (e.g. polymorphisms), each with its own valid existence. This clone is substantially in agreement with the reference, but a complete review of all prevailing variants is recommended prior to use. [More info](#)

OTI Annotation: This clone was engineered to express the complete ORF with an expression tag. Expression varies depending on the nature of the gene.

Components: The ORF clone is ion-exchange column purified and shipped in a 2D barcoded Matrix tube containing 10ug of transfection-ready, dried plasmid DNA (reconstitute with 100 ul of water).

Reconstitution Method:	<ol style="list-style-type: none">1. Centrifuge at 5,000xg for 5min.2. Carefully open the tube and add 100ul of sterile water to dissolve the DNA.3. Close the tube and incubate for 10 minutes at room temperature.4. Briefly vortex the tube and then do a quick spin (less than 5000xg) to concentrate the liquid at the bottom.5. Store the suspended plasmid at -20°C. The DNA is stable for at least one year from date of shipping when stored at -20°C.
RefSeq:	NM_139321.1 , NP_647537.1
RefSeq Size:	8645 bp
RefSeq ORF:	4290 bp
Locus ID:	8455
UniProt ID:	O75882
Cytogenetics:	20p13
Domains:	CUB, CLECT, EGF_Lam, PSI, PSI, EGF, Kelch
Protein Families:	Druggable Genome, Secreted Protein, Transmembrane
Gene Summary:	This gene encodes both membrane-bound and secreted protein isoforms. A membrane-bound isoform exhibits sequence similarity with the mouse mahogany protein, a receptor involved in controlling obesity. A secreted isoform is involved in the initial immune cell clustering during inflammatory responses that may regulate the chemotactic activity of chemokines. [provided by RefSeq, Apr 2016]