

## Product datasheet for **RG214083**

### CDC42 binding protein kinase alpha (CDC42BPA) (NM\_003607) Human Tagged ORF Clone

#### Product data:

Product Type:	Expression Plasmids
Product Name:	CDC42 binding protein kinase alpha (CDC42BPA) (NM_003607) Human Tagged ORF Clone
Tag:	TurboGFP
Symbol:	CDC42BPA
Synonyms:	MRCK; MRCKA; PK428
Mammalian Cell Selection:	Neomycin
Vector:	pCMV6-AC-GFP (PS100010)
E. coli Selection:	Ampicillin (100 ug/mL)
ORF Nucleotide Sequence:	>RG214083 representing NM_003607 Red=Cloning site Blue=ORF Green=Tags(s)

TTTTGTAATACGACTCACTATAGGGCGGCCGGAATTCGTCGACTGGATCCGGTACCGAGGAGATCTGCC  
GCC**CGATCGCC**

ATGTCTGGAGAAGTGCCTTTGAGGCAGTTGGAGCAGTTTATTTTGGACGGGCCCGCTCAGACCAATGGGC  
AGTGCTTCAGTGTGGAGACACTACTGGATATACTCATCTGCCTTTATGATGAATGCAATAATTCTCCATT  
GAGAAGAGAGAAGAACATTCTCGAATACCTAGAATGGGCTAAACCATTACTTCTAAAGTAAACAAATG  
CGATTACATAGAGAAGACTTTGAAATATTAAGGTGATTGGTTCGAGGAGCTTTTGGGAGGTTGCTGTAG  
TAAACTAAAAATGCAGATAAAGTGTTGCCATGAAAAATTTGAATAAATGGGAAATGCTGAAAAGAGC  
TGAGACAGCATGTTTTTCGTGAAGAAAGGATGTATTAGTGAATGGAGACAATAAATGGATTACAACCTTG  
CACTATGCTTTCCAGGATGACAATAACTTATACCTGGTTATGGATTATTATGTTGGTGGGATTTGCTTA  
CTCTACTCAGCAAATTTGAAGATAGATTGCCTGAAGATATGGCTAGATTTTACTTGGCTGAGATGGTGAT  
AGCAATTGACTCAGTTCATCAGCTACATTATGTACACAGAGACATTAACCTGACAATACTGATGGAT  
ATGAATGGACATATTCGGTTAGCAGATTTTGGTCTTGTCTGAAGCTGATGGAAGATGGAACGGTTCAGT  
CCTCAGTGGCTGTAGGAACCTCAGATTATCTCTCCTGAAATCCTTCAAGCCATGGAAGATGAAAAAGG  
GAGATATGGACCTGAATGTGACTGGTGGTCTTTGGGGTCTGTATGTATGAAATGCTTTACGGAGAAACA  
CCATTTTATGCAGAATCGCTGGTGGAGACATACGGAAAAATCATGAACCACAAAGAGAGGTTTTCAGTTTC  
CAGCCCAAGTGAAGTGTGCTGAAAAATGCTAAGGATCTTATTGAAAGGCTCATTGTAGCAGAGAACA  
TCGACTTGGTCAAATGGAATAGAAAGACTTTAAGAAACACCCATTTTTCAGTGGAAATTGATTGGGATAAT  
ATTCGGAAGTGTGAAGCACCTTATATCCAGAAGTTAGTAGCCCAACAGATACATCGAATTTTGTGTAG  
ATGATGATTGTTAAAAAATTCTGAAACGATGCCCCACCAACACATACTGCATTTTCTGGCCACCATCT  
GCCATTTGTTGGTTTTACATATACTAGTAGCTGTACTTTCTGTATCGGAGCTGTTTAAAGAGTTACGGCT  
GGTCCCACCTCACTGGATCTTGATGTTAATGTTTCAGAGGACTCTAGACAACAACCTTAGCAACTGAAGCTT  
ATGAAAGAAGAATTAAGCGCCTTGACGAAGAAAACTTGAACCTCAGTAGAAAACCTCAAGAGTCAACACA  
GACTGTCCAAGCTCTGCAGTATTCAACTGTTGATGGTCCACTAACAGCAAGCAAAGATTTAGAAAATAAA



[View online »](#)

AACTTAAAAGAAGAAATTGAAAACTAAGAAAACAAGTAAACAGAAATCAAGTCATTTGGAACAGCAACTTG  
AAGAAGCTAATGCTGTGAGGCAAGAAGTATGATGCTTTTAGACAAATCAAGGCTTATGAAAAACAAAT  
CAAAACGTTACAACAAGAAAGAGAAGATCTAAATAGGAACTAGTCCAGGCTAGTGAGCGATTAAAAAC  
CAATCCAAAGAGCTGAAAGAGCCACACTGTGAGGAACTGGCCATGCAGGAATTCATGGAGATCAATG  
AGCGGCTAACAGAATTGCACACCCAAAAACAGAACTTGTCTGCCATGTCCGAGATAAGGAAGAAGAGGT  
GGACCTGGTGATGCAAAAAGTTGAAAGCTTAAAGCAAGAACTGCCGAGAACAGAAAGAGCCAAAAAGAG  
CTGGAAGTTCATACAGAAGCTCTAGCTGTGAAGCATCTAAAGACAGGAAGCTACGTGAACAGAGTGAGC  
ACTATTCTAAGCAACTGGAAAAATGAATTGGAGGGACTGAAGCAAAAAACAATTAGTTACTACCAGGAGT  
ATGCAGCATAGAACATCAGCAAGAGATAACCAAATAAAGACTGATTTGAAAAAGAAAAGTATCTTTTAT  
GAAGAAGAATTATCTAAAAGAGAAGGAATACATGCAAAATGAAATAAAAAATCTTAAGAAAGAACTGCATG  
ATTCAGAAGGTCAGCAACTTGTCTCAACAAAGAAATTATGATTTTAAAAGACAAATTGGAAAAACCCAG  
AAGAGAAAGTCAAAGTGAAGGGGAGGAATTTGAAAGTGAGTTCAAACAACAATATGAACGAGAAAAAGTG  
TTGTTAACTGAAGAAAAATAAAAGCTGACGAGTGAAGTGTGATAAGCTTACTACTTTGTATGAGAAGTAA  
GTATACACAACCAGCAGTTAGAAGAAGAGGTTAAAGATCTAGCAGACAAGAAAGAATCAGTTGCACATTG  
GGAAGCCCAAATCACAGAAATAATTCAGTGGGTCAGCGATGAAAAGGATGCACGAGGGTATCTTCAGGCC  
TTAGCTTCTAAAATGACTGAAGAATTGGAGGCATTAAGAAATCCAGCTTGGGTACACGAGCAACAGATA  
TGCCCTGGAAAAATGCGTCGTTTTGCGAACTGGATATGTGAGCTAGACTGGAGTTGCAGTCGGCTCTGGA  
TGCAGAAATAAGAGCCAAACAGGCCATCCAAGAAGAGTTGAATAAAGTTAAAGCATCTAATATCATAACA  
GAATGTAAACTAAAAGATTAGAGAAGAAGAACTTGAAGTACTCTCAGAAATCGAACAGCTGATAAAGG  
ACACTGAAGAGCTTAGATCTGAAAAGGGTATAGAGCACCAGACTCACAGCATTCTTTCTTGGCATT  
GAATACGCCTACCGATGCTCTGGATCAATTTGAACTGTAGACTCCACTCCACTTCAGTTCACACACCA  
ACCTTAAAGAAAAAGGATGTCCTGGTTCAGTGGCTTCCACCTAAGCGCAAGACTCACCAGTTTTTTG  
TAAAATCTTTTACTACTCCTACCAAGTGCATCAGTGTACCTCTTGTGTTGGGTTTAAATAAGACAGGG  
CTGTTTCATGTGAAGTGTGTGGATTCTCATGCCATATAACTTGTGTAACAAGCTCCAACCACTGTCCA  
GTTCTCTGAACAGACAAAAGGTCCTGGGTATAGATCCTCAGAAAAGGAATAGGAACAGCATATGAAG  
GTCATGTCAGGATTCCTAAGCCAGCTGGAGTGAAGAAAGGGTGGCAGAGAGCACTGGCTATAGTGTGTA  
CTTCAAATCTTTCTGTACGATATTGCTGAAGGAAAAGCATCTCAGCCCAGTGTGTCATTAGTCAAGTG  
ATTGACATGAGGGATGAAGAATTTCTGTGAGTTCAGTCTTGGCTTCTGATGTTATCCATGCAAGTCGGA  
AAGATATACCCTGTATATTTAGGGTCACAGCTTCCCAGCTCTCAGCATCTAATAACAATGTTCAATCCT  
GATGCTAGCAGACTGAGAATGAGAAGAATAAGTGGTGGGAGTGTGAGTGAATTGCACAAGATTTTG  
AAGAAAAACAATTCAGAGACCCTCAGTCTATGTTCCCAAAGAGGCTTATGACAGCACTCTACCCCTCA  
TAAAACAACCCAGGAGCCGCAATCATAGATCATGAAAGAATTGCTTTGGGAAACGAAGAAGGGTTATT  
TGTTGTACATGTCACCAAGATGAAATTATTAGAGTTGGTGAACAATAAGAAGATTCATCAGATTGAACTC  
ATTCAAATGATCAGCTTGTGCTGTGATCTCAGGACGAAATCGTCATGTACGACTTTTTCTATGTCAG  
CATTGGATGGGCGAGAGACCGATTTTTACAAGCTGTGAGAACTAAAGGGTGTCAAACCGTAACTTCTGG  
AAAGGTGCGCCATGGAGCTCTCACATGCCTGTGTGGCTATGAAAAGGCAGGTCCTCTGTTATGAACTA  
TTTCAGAGCAAGACCCGTACAGAAAAATTAAGAAATTAAGTCCCATAAATGTCAGTGGATGGCAA  
TCTTCAGTGAACAACCTCTGTGTGGGATTCAGTCAAGATTTCTAAGATACCCCTGAATGGAGAAGGAAA  
TCCATACAGTATGCTCCATTCAAATGACCATACACTATCATTATTGCACATCAACCAATGGATGCTATC  
TGCGCAGTTGAGATCTCCAGTAAAGAATATCTGCTGTGTTTTAACAGCATTGGGATATACACTGACTGCC  
AGGGCCGAAGATCTAGACAACAGGAATTGATGTGGCCAGCAAATCCTTCTCTTGTGTTACAATGCACC  
ATATCTCTCGGTGTACAGTGAAGATGCAGTTGATATCTTTGATGTGAACTCCATGGAATGGATTCAGACT  
CTTCTCTCAAAAAGTTCGACCCTTAAACAATGAAGGATCATTAAATCTTTTAGGGTTGGAGACCATTA  
GATTAATATATTTCAAAAATAAGATGGCAGAAGGGGACGAACTGGTAGTACCTGAAACATCAGATAATAG  
TCGAAACAAATGGTTAGAAACATTAACAATAAGCGGCGTTATTCCTTCAGAGTCCAGAAAGAGGAAAGG  
ATGCAGCAGAGGAGGAAATGCTACGAGATCCAGAAATGAGAAAATAATTAATTTCTAATCCAATAATT  
TTAATCACATAGCACACATGGGTCTGGAGATGGAATACAGATCCTGAAAGATCTGCCATGAACCTCG  
GCCTCAGGAAAGTCGGACAGTATTCAGTGGCTCAGTCAAGTATTCCATCTATCACCAATCCCGCCCTGAG  
CCAGGCCGCTCCATGAGTGTAGCAGTGGCTGTGAGCAAGGTCATCCGCACAGAATGGCAGCGCATTAA  
AGAGGGAATTCTCTGGAGGAAGTACAGTGCCAAGCGGCAGCCATGCCCTCCCGTTCAGAGGGCTCTTT  
GTCCTCTGGAGGCATGGACCAAGGAAGTATGCCCCAGCGAGGGACTTTGACGGAGAGGACTCTGACTCT  
CCGAGGCATTCCACAGCTTCAACAGTTCAACCTAAGCAGCCCCCAAGCCAGCTTACCCCCAAAAA

CCAAGAGCCTCTCCCTGGAGAGCACTGACCGCGGAGCTGGGACCCG

ACGCGTACGCGGCCGCTCGAG - GFP Tag - GTTTAA

**Protein Sequence:**

>RG214083 representing NM\_003607

Red=Cloning site Green=Tags(s)

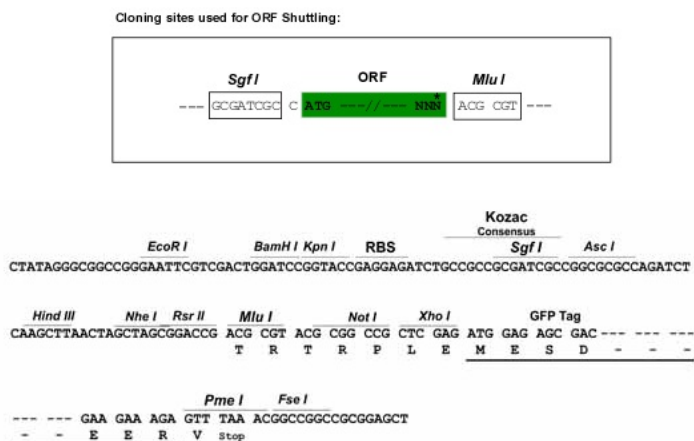
MSGEVRLRQLEQFILDGPAQTNGQCFSVETLLDILICLYDECNNSPLRREKNILEYLEWAKPFTSKVKQM  
 RLHREDFEILKVI GRGAFGEVAVVVKLNADKVFAMKILNKWEMLKRAETACFREERDVLVNGDNKWITTL  
 HYAFQDDNNLYL VMDYVYGGDLL TLLSKFEDRLPEDMARFYLAEMVIAIDSVHQLHYVHRDIKPDNILMD  
 MNGHIRLADFGSCLKLMEDGTVQSSVAVGTPDYISPEILQAMEDGKGRYGPECDWWSLVGCMYEMLYGET  
 PFYAESLVETYGKIMNHKERFQFPAQVTDVSENAKDLIRRLICSREHRLGQNGIEDFKKHPFFSGIDWDN  
 IRNCEAPYIPEVSPTDTSNFDVDDCLKNSETMPPPTHTAFSGHHLPFVGFYTYSSCVLSDRSCLRVT  
 A GPTSLDLVDVNVQRTL DNNLATEAYERRIKRLEQEKL SRKLQESTQTVAALQYSTVDGPLTASKDLEIK  
 NLKEEIEKLRKQVTESSHLEQQLEEANAVRQELDDAFRQIKAYEKQIKTLQQEREDLNKELVQASERLKN  
 QSKELKDAHCQRKLA MQEFMEINERL TELHTQKQKLARHVDRKKEEVDLVMQKVESLRQELRRTERAKKE  
 LEVHTEALAAEASKDRKLRQESEHYSKQLENELEGLKQKQISYSPGVCSIEHQEITKTKTDLEKKSIFY  
 EEELSKREGIHANEIKNLKKELDHSEGGQALALNKEIMILKDKLEKTRRESQSEREFESEFKQYEREKV  
 LLTEENKLTSELDKLTTL YENLSIHNQLEEEVKDLADKKEVAHWAEQITEIIQWVSDEKDARGYLQA  
 LASKMTEELEALRNSSLGTRATDMPWKMRRAKLDM SARLELQSALDAEIRAKQAIQEELNKVKASNIIT  
 ECKLKDSEKKNLELLSEIEQLIKDTEELRSEKGEHQDSQHSFLAFLNTPDALDQFETVDSTPLSVHTP  
 TLRKKGCPGSTGFPPKRKTHQFFVKSFTTPTKCHQCTSLMVGLIRQGCSEVCGFSCHITCVNKAPTTCP  
 VPPEQTKGPLGIDPQKIGTAYEGHVRIPKAGVKKGWQRALAI VCDFKLFLYDIAEGKASQPSVVISQV  
 IDMRDEEFSVSSVLASDVIHASRKDIPICFRVTASQLSASNKCSILMLADTENEKNKWVGLSELHKIL  
 KKNKFRDRSVYVPKEAYDSTLPLIKTTQAAAIIDHERIALGNEEGLFVVHVTKDEIIRVGDNKKIHQIEL  
 IPNDQLVAVISGRNRHVRLFPMSALDGRETDFYKLSETKGCQTVTSGKVRHGAL TCLCVAMKRQVLCYEL  
 FQSKTRHRKFKEIQVPYNVQWMAIFSEQLCVGFQSGFLRYPLNGEGNPYSMLHSDHTLSFIAHQPMDAI  
 CAVEISSKEYLLCFNSIGIYTD CQGRRSRQQLMWPANPSSCCYNAPYLSVYSENAVDIFDVNSMEWIQT  
 LPLKVRPLNNEGSLNLLGLE TIRLIYFKNKMAEGDEL VVPETSDNSRKQMVNRNINNKRRYSFRVPEEER  
 MQQRREMLRDPENRNLISNPTNFNHIAHMGPGDGIQILKDLPMNPRPQESRTVFSGSVSIPSITKSRPE  
 PGRSMSASSGLSARSSAQNGSALKREFSGGSYS AKRQMPMPSEGLSSGGMDQGS DAPARDFDGEDSDS  
 PRHSTASNSSNLSSPPSPASPRKTKSLSESTDRGSWDP

TRTRPLE - GFP Tag - V

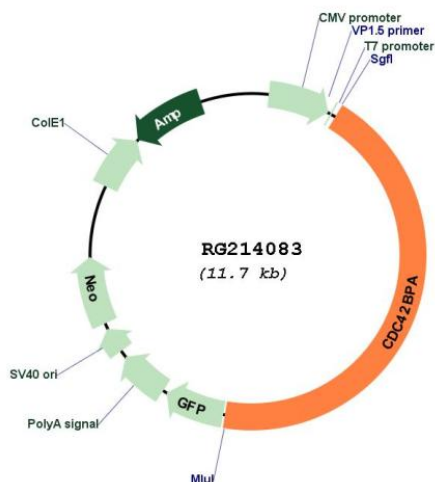
**Restriction Sites:**

Sgfl-MluI

**Cloning Scheme:**



**Plasmid Map:**



**ACCN:** NM\_003607

**ORF Size:** 5157 bp

**OTI Disclaimer:** The molecular sequence of this clone aligns with the gene accession number as a point of reference only. However, individual transcript sequences of the same gene can differ through naturally occurring variations (e.g. polymorphisms), each with its own valid existence. This clone is substantially in agreement with the reference, but a complete review of all prevailing variants is recommended prior to use. [More info](#)

**OTI Annotation:** This clone was engineered to express the complete ORF with an expression tag. Expression varies depending on the nature of the gene.

**Components:** The ORF clone is ion-exchange column purified and shipped in a 2D barcoded Matrix tube containing 10ug of transfection-ready, dried plasmid DNA (reconstitute with 100 ul of water).

**Reconstitution Method:**

1. Centrifuge at 5,000xg for 5min.
2. Carefully open the tube and add 100ul of sterile water to dissolve the DNA.
3. Close the tube and incubate for 10 minutes at room temperature.
4. Briefly vortex the tube and then do a quick spin (less than 5000xg) to concentrate the liquid at the bottom.
5. Store the suspended plasmid at -20°C. The DNA is stable for at least one year from date of shipping when stored at -20°C.

**RefSeq:** [NM\\_003607.4](#)

**RefSeq Size:** 8019 bp

**RefSeq ORF:** 5160 bp

**Locus ID:** 8476

**UniProt ID:** [Q5VT25](#)

**Cytogenetics:** 1q42.13

**Domains:** pkinase, S\_TK\_X, TyrKc, S\_TKc

**Protein Families:** Druggable Genome, Protein Kinase

**Gene Summary:** The protein encoded by this gene is a member of the serine/threonine protein kinase family. This kinase contains multiple functional domains. Its kinase domain is highly similar to that of the myotonic dystrophy protein kinase (DMPK). This kinase also contains a Rac interactive binding (CRIB) domain, and has been shown to bind CDC42. It may function as a CDC42 downstream effector mediating CDC42 induced peripheral actin formation, and promoting cytoskeletal reorganization. Multiple alternatively spliced transcript variants have been described. [provided by RefSeq, Sep 2018]