

Product datasheet for **RG214061**

BACH2 (NM_021813) Human Tagged ORF Clone

Product data:

Product Type:	Expression Plasmids
Product Name:	BACH2 (NM_021813) Human Tagged ORF Clone
Tag:	TurboGFP
Symbol:	BACH2
Synonyms:	BTBD25; IMD60
Mammalian Cell Selection:	Neomycin
Vector:	pCMV6-AC-GFP (PS100010)
E. coli Selection:	Ampicillin (100 ug/mL)



[View online »](#)

ORF Nucleotide Sequence:

>RG214061 representing NM_021813
 Red=Cloning site Blue=ORF Green=Tags(s)

TTTTGTAATACGACTCACTATAGGGCGGCCGGAATTCGTCGACTGGATCCGGTACCGAGGAGATCTGCC
 GCC**GCGATCGCC**

ATGTCTGTGGATGAGAAGCCTGACTCCCCATGTATGTGTATGAGTCCACAGTCCACTGCACCAACATCC
 TCCTGGGCTCAATGACCAGCGGAAAAAGGATATTCTCTGTGACGTGACTTTGATCGTGGAGAGGAAGGA
 GTTCCGGGCCACCGGGCTGTGCTGGCCGATGCAAGTAAATTTTGGCAGGCGCTGGTTGGACAGACA
 AAAAATGATTTGGTGGTCACTTGCCTGAGGAGGTACRGCAGGGGCTTTGGGCCGCTGTACAGTTTG
 CCTACACTGCCAAGCTGTTACTCAGCAGAGAAAACATCCGCGAGGTATCCGCTGTGCTGAGTTCCTGCG
 CATGCACAACCTGGAGGACTCCTGCTTCACTTCTGCAGACCCAGCTCCTGAACAGTGGAGATGGCCTG
 TTTGTGTGCCGAAGGATGCTGCGTGCCAGCGCCACACGAGGACTGCGAGAAGTCTGCAGGAGAGGAGG
 AGGATGAAGAGGAGGAGACGATGGATTCAGAGACGGCCAAGATGGCTTGGCCAGGGACCAGATGCTTCC
 AGAGCCCATCAGCTTTGAGGCCCGCCATCCCGTAGCAGAGAAGGAAGAAGCCCTGCTGCCCGAGCCT
 GACGTGCCACAGACACCAAGGAGAGCTCAGAAAAGGACGCGTTAACGCAGTACCCAGATACAAGAAAT
 ACCAGTTGCATGTACCAAGAATGTCTATAATGCATCATCACACAGTACCTCAGGTTTTGAAGCACATT
 CCGGAAGATAACTTAGCAACAGCCTCAAGCCGGGGCTTGCAGGGGGCAGATTAAGAGTGGAGCGCC
 AGTGAAGAGAATGAGGAAGAGAGCATCACGCTCTGCTGTCTGGAGATGAGCCTGACGCCAAGGACAGAG
 CGGGGGATGTCGAGATGGACCGGAAACAGCCAGCCCTGCCCTACCCACAGCCCGAGCTGGGGCCGC
 CTGCTGGAGAGATCCAGGAGCGTGGCCTCGCCCTCCTGCTTAAGGTCTCTGTTACAGATAACGAAAAGT
 GTGGAGCTGTCTGGCCTGCCAGTACATCTCAGCAGCAGCTTTGCCAGGAGTCCAGCCTGCCCTTTGACA
 AGGGGATCACTCAGGGTGACCTTAAACTGACTACACCCCTTTACAGGGAATTATGGACAGCCCAAGT
 GGGCCAGAAGGAGGTGTCCAATTCACCATGGGTGCGCCCTCAGGGGGCCTGGGTTGGAGGCTCTCTGT
 AAACAGGAGGAGAGCTGGACCGGAGGAGCGTGATCTTCTCCTCCAGCGCTTGTGACCAAGTGGACACCT
 CGGTGCATTCTTATTCTGGGGTGGAGCTTTGGACAAAGACCTCTCTGAGCCGGTGCACAAAGGCTGTG
 GGTGGGAGCCGGCAGTCCCTCCAGCTCGCAGGCTACTCCACGGTGGGCTGATGGCCGACCACTTG
 CCAGGAAGGATGCGGCCAACACCAGCTGCCCGGTGCAATCAAAGTCTGCCCTCGCTCACCCCTTG
 AGACCAGGACCAGGACTCCAGCTCCTGCTTCTCTATTCTACGCGGAGGACGGGAGCGGGGGCTCACC
 CTGACGCTCCCTCTCTGTGAGTCTCCTCCTCGCCCTGTTCCAGGGAGCCAGATTCTTGCCACAGAA
 CATCAGGAACCAGCCTGATGGGAGATGGAATGTACAACCAAGTGGGCCCAAAATTAATGTGAGCAGT
 CTTATGGAACCAACTCCAGTACGAATCCGGATCGTTCTCGGAAGCAGACAGTGAAGTCTGTCTGTGCA
 GGACAGGGGCCAGGAGGTAAGAACTTCTTTTCTGTAGATCAAATCACAGATCTTCAAGGAACGATTTT
 CAGATGATGATTAATGACAAGCTAACCTCAGAACAGTTAGAGTTTATTATGATGTCCGACGGCGCA
 GCAAGAACCGCATCGCGGCCAGCGCTGCCGAAAAGGAACTGGACTGTATTGAAATTTAGAATGTGA
 AATCCGCAAAATGGTGTGTGAGAAAGAGAACTGTTGTGAGAGGAAATCAACTGAAAGCATGCATGGGG
 GAACTGTTGGACAACCTTCTCCTGCTTTCCAGGAAGTTGCGGAGACATCCAGAGCCCCGAGCAGATCC
 AGGCCCTGCATCGGTATTGCCCTGTCTCAGACCCATGGACTTGGCCACGGCCTCCAGTATTAACCTG
 GCCCTTGGGTGCTGAGCAGAACATTGCGGCCTCCCAATGCGCAGTGGGGGAAAACGTGCCCTGCTGCTT
 GAGCCAGGCGCGGCTCCCCCGGACCCCTGGGCACCCAGCAACACTCCGAGAATTGTACCTTGGA
 GGAGACTAGAAGGCACTGACCCGGAACTTCTCAGAGAGAGGACCTCCTTGAACCCAGGAGCCAAAC
 AGTGACCGTGGACTTCTGCCAGGAAATGACTGATAAGTGTACAACGACGAACAGCCAGGAAAGATTAT
 ACC

AG**CGGACCG**ACGCGTACGCGGCCGCTCGAG – GFP Tag – GTTTAA

Protein Sequence: >RG214061 representing NM_021813
Red=Cloning site Green=Tags(s)

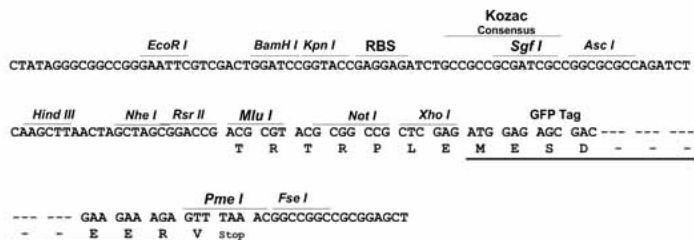
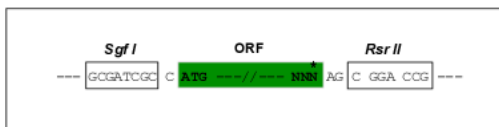
```
MSVDEKPDSPMYVYESTVHCTNILLGLNDQRKKDILCDVTLIVERKEFRAHRAVLAACSEYFWQALVGQT  
KNDLVVSLPEEVXARGFGPLLQFAYTAKLLL SRENIREVIRCAEFLRMHNLEDSCFSFLQTLNSEDGL  
FVCRKDAACQRPHEDCENSAGEEEEEETMDSETAKMACPRDQMLPEI SF EAAAIPVAEKEEALLPEP  
DVPTDTKESSEKDAL TQYPRYKQYLACTKNVYNASSHSTSGFASTFREDNSSNSLKPGLARGQIKSEPP  
SENEEEESITLCLSGDEPDAKDRAGDVEMDRKQSPAPTPTAPAGAACLERSRSVASPCLRSLSITKS  
VELSGLPSTSQQHFARSPACPFDKGITQGDLKTDYTPFTGNYGQPHVGQKEVSNFTMGSPLRGPGLEALC  
KQEGELDRRSVIFSSSACDQVSTSVHSYSGVSSLDKDLSEPVPKGLWVGAGQSLPSSQAYSHGGLMADHL  
PGRMRPNTSCPVPKVCPRSPPLETRTRTSSSSSSYSYAEDGGGSPCSLPLCEFSPPCSQGARFLATE  
HQEPGLMGDGMYNQVRPQIKCEQSYGTNSSDESGSFSEADSESCPVDQRGQEVKLPFPVDQITDLPRNDF  
QMMIKMHKLTSEQLEFIHDVRRRSKNRIAAQRCRKRKLDICQNLCEIRKLVCEKEKLLSERNQLKACMG  
ELLDNFSCLSQEVCRDIQSPEQIQALHRYCPVLRPMDLPTASSINPAPLGAEQNIAASQCAVGENVPCCL  
EPGAAPPPPPWAPSNTSENCTSGRRLEGTDPGTF SERGPPEPRSQTVTVDFCQEMTDKCTTDEQPRKDY  
T
```

SGPTRRRLE - GFP Tag - V

Restriction Sites: Sgfl-RsrII

Cloning Scheme:

Cloning sites used for ORF Shuttling:


ACCN: NM_021813

ORF Size: 2523 bp

OTI Disclaimer: The molecular sequence of this clone aligns with the gene accession number as a point of reference only. However, individual transcript sequences of the same gene can differ through naturally occurring variations (e.g. polymorphisms), each with its own valid existence. This clone is substantially in agreement with the reference, but a complete review of all prevailing variants is recommended prior to use. [More info](#)
OTI Annotation: This clone was engineered to express the complete ORF with an expression tag. Expression varies depending on the nature of the gene.

Components: The ORF clone is ion-exchange column purified and shipped in a 2D barcoded Matrix tube containing 10ug of transfection-ready, dried plasmid DNA (reconstitute with 100 ul of water).

Reconstitution Method:

1. Centrifuge at 5,000xg for 5min.
2. Carefully open the tube and add 100ul of sterile water to dissolve the DNA.
3. Close the tube and incubate for 10 minutes at room temperature.
4. Briefly vortex the tube and then do a quick spin (less than 5000xg) to concentrate the liquid at the bottom.
5. Store the suspended plasmid at -20°C. The DNA is stable for at least one year from date of shipping when stored at -20°C.

RefSeq: [NM_021813.1](#), [NP_068585.1](#)

RefSeq Size: 9120 bp

RefSeq ORF: 2526 bp

Locus ID: 60468

UniProt ID: [Q9BYV9](#)

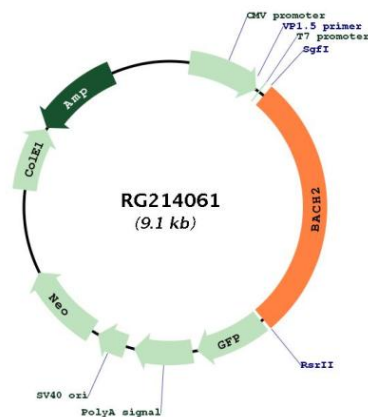
Cytogenetics: 6q15

Domains: BTB, BRLZ

Protein Families: Druggable Genome, Transcription Factors

Gene Summary: Transcriptional regulator that acts as repressor or activator (By similarity). Binds to Maf recognition elements (MARE) (By similarity). Plays an important role in coordinating transcription activation and repression by MAFK (By similarity). Induces apoptosis in response to oxidative stress through repression of the antiapoptotic factor HMOX1 (PubMed:17018862). Positively regulates the nuclear import of actin (By similarity). [UniProtKB/Swiss-Prot Function]

Product images:



Circular map for RG214061