

Product datasheet for **RG214044**

DOCK9 (NM_015296) Human Tagged ORF Clone

Product data:

Product Type:	Expression Plasmids
Product Name:	DOCK9 (NM_015296) Human Tagged ORF Clone
Tag:	TurboGFP
Symbol:	DOCK9
Synonyms:	ZIZ1; ZIZIMIN1
Mammalian Cell Selection:	Neomycin
Vector:	pCMV6-AC-GFP (PS100010)
E. coli Selection:	Ampicillin (100 ug/mL)
ORF Nucleotide Sequence:	>RG214044 representing NM_015296 Red=Cloning site Blue=ORF Green=Tags(s)

TTTTGTAATACGACTCACTATAGGGCGGCCGGAATTCGTCGACTGGATCCGGTACCGAGGAGATCTGCC
GCC**CGATCGCC**

ATGTCGCAGCCGCCGCTGCTCCCCGCTCGGCGGAGACTCGGAAGTTCACCCGGGCGCTGAGTAAGCCGG
GCACGGCGGCCGAGCTGCGGCAGAGCGTGTCTGAGGTGGTGC GCGGCTCCGTGCTCTGGCAAAGCCAAA
GCTAATTGAGCCACTCGACTATGAAAATGTCATCGTCCAGAAGAAGACTCAGATCCTGAACGACTGTTTA
CGGGAGATGCTGCTTCCCTTACGATGACTTTCAGACGGCCATCCTGAGACGACAGGGTCGATACATAT
GCTCAACAGTGCCTGCGAAGGCCGAAGAGGAAGCACAGAGCTTGTGTTACAGAGTGCATCAAAACCTA
TAACTCTGACTGGCATCTGTGAACTATAAATATGAAGTTACTCAGGAGAGTTTCGACAGCTTCCGAAC
AAAGTGGTCAAGTTGGATAAACTTCCAGTTCATGTCTATGAAGTTGACGAGGAGGTGACAAAGATGAGG
ATGCTGCCTCCCTTGGTCCCAGAAGGGTGGGATCACCAAGCATGGCTGGCTGTACAAAGGCAACATGAA
CAGTGCCATCAGCGTGACCATGAGGTCAATTAAGAGACGATTTTCCACCTGATCAACTTGGCGATGGA
TCCTATAATTTGAATTTTATAAAGATGAAAAGATCTCCAAGAACAAAAGGATCAATATTTCTGGATT
CCTGTATGGGTGTCGTTCAGAACAACAAAGTCAGGCGTTTTGCTTTTGAGCTCAAGATGCAGGACAAAAG
TAGTTATCTCTTGGCAGCAGACAGTGAAGTGAAAATGGAAGAATGGATCACAAATCTAAATAAGATCCTC
CAGCTCAACTTTGAAGTGCATGCAAGAAAAGCGAAAATGGCGACTCTCACGAAGATGATGAACAAAGCA
AATTGGAAGTTCTGGTCCGGTTTAGATAGCTACCTGCCGGAACCTGCCAAGAGTGCAAGAGAAGCAGA
AATCAAACTGAAAAGTGAAGCAGAGTCAAACCTTTTTTATTTGGACCCAGATGCCAGAAGCTTGACTTC
TCATCAGCTGAGCCAGAAGTGAAGTCAATTTGAAGAGAAGTTGGAAAAAGGATCCTTGCAAGTGAATG
ATTTATCTTTCAATTTGCAATGCTGTGTTGCCGAAAATGAAGAAGGACCCACTACAAATGTTGAACCTTT
CTTTGTTACTCTATCCCTGTTTGACATAAAAATACAACCGAAGATTTCTGCCGATTTCCACGTAGACCTG
AACCATTTCTCAGTGAGGCAAAATGCTCGCCACCACGTCCCGGCGCTGATGAATGGCAGTGGCAGAGCC
CATCTGCTCTCAAGGCATCCTTCATGAAGCCGCCATGCAGTATCCGAAGCAGGGAAATTTTCAGTCAC
TTGTCCTCATCCAGATATATTTCTGTGGCCAGAATTGAAAAGTCTTCAGGGGAGCATCACACATTGC



[View online >](#)

GCTGAGCCATATATGAAAAGTTCAGACTCTTCTAAGGTGGCCAGAAAGGTGCTGAAGAATGCCAAGCAGG
 CATGCCAAAGACTAGGACAGTATAGAATGCCATTTGCTTGGGCAGCAAGGACATTGTTTAAAGGATGCATC
 TGGAAATCTTGACAAAAATGCCAGATTTTCTGCCATCTACAGGCAAGACAGCAATAAGCTATCCAATGAT
 GACATGCTCAAGTACTTGCAGACTTTCGGAAACCTGAGAAGATGGCTAAGCTCCCAGTGATTTTAGGCA
 ATCTAGACATTACAATTGATAATGTTTCCTCAGACTTCCCTAATTATGTTAATTCATCATACATTTCCAC
 AAAACAATTTGAAACCTGCAGTAAAACTCCCATCACGTTTGAAGTGGAGGAATTTGTGCCCTGCATACCA
 AAACACACTCAGCCTTACACCATCTACACCAATCACCTTTACGTTTATCCTAAGTACTTGAATACGACA
 GTCAGAAGTCTTTTGCCAAGGCTAGAAATATTGCGATTTGCATTGAATCAAAGATTCAGATGAGGAAGA
 CTCTCAGCCCCTAAGTGCAATTTATGGCAGACCTGGTGGGCCAGTTTTCAAGAAGCGCCTTTGCTGCA
 GTTTTACACCATCACAAAACCCAGAATTTTATGATGAGATTAATAAGAGTTGCCCACTCAGCTGCATG
 AAAAGCACCACTGTTGCTCACATTTCTCCATGTCAGCTGTGACAACCAAGTAAAGGAAGCAGCAAGAA
 GAGGGATGTCGTTGAAACCCAAGTTGGCTACTCCTGGCTTCCCCTCCTGAAAGACGGAAGGGTGGTGACA
 AGCGAGCAGCACATCCCGGTCTCGGCGAACCTTCCCTCGGGCTATCTGGCTACCAGGAGCTTGGGATG
 GCAGGCATTATGGTCCGGAATTAATGGGTAGATGGAGGCAAGCCACTGCTGAAAATTTCCACTCATCT
 GGTTCCTACAGTGTATACTCAGGATCAGCATTTACATAATTTTTTCCAGTACTGTCAGAAAACCGAATCT
 GGAGCCCAAGCCTTAGGAAACGAACTTGTAAAGTACCTTAAGAGTCTGCATGCGATGGAAGGCCAGTG
 TGATCGCCTTCTTGCCTACTATCCTAAACCAGCTGTTCCGAGTCCCTACCAGAGCCACACAGGAAGAAGT
 CGCGGTTAACGTGACTCGGGTATTATTCATGTGGTTGCCAGTGCCATGAGGAAGGATTGGAGAGCCAC
 TTGAGGTCATATGTTAAGTACCGGTATAAAGGCTGAGCCATATGTTGCCTCTGAATACAAGACAGTGCATG
 AAGAACTGACCAATCCATGACCACGATTTCAAGCCTTCTGCCGATTTCTCACCAGCAACAACTACT
 GAAGTACTCATGGTTTTCTTTGATGTACTGATCAAATCTATGGCTCAGCATTTGATAGAGAAGTCCAAA
 GTTAAGTTGCTGCGAAACCAGAGATTTCTGATCCTATCATCATGCAGTGGAAACCGTGTAAATATGC
 TGATGCCACACATCACTCAGAATTTGAGATAATCCAGAGGCATCTAAGAACCGGAATCATAGCCTTGC
 TGTCTTCAAGAGATGTTTCACTTTCATGGACAGGGGCTTTGCTTCAAGCAGATCAACAACACTATT
 AGCTGTTTTGCTCCTGGAGACCCAAAGACCCTCTTGAATACAAGTTTGAATTTCTCCGTGTAGTGTGCA
 ACCATGAACATTATATCCGTTGAACCTACCAATGCCATTTGAAAAGGCAGGATTCAAAGATACCAAGA
 CCTCCAGCTTGACTACTCATTAAACAGATGAGTTCTGCAGAAACCACTTCTTGGTGGGACTTTACTGAGG
 GAGGTGGGACAGCCCTCCAGGAGTTCGGGAGGTCCGTCTGATCGCCATCAGTGTGCTCAAGAACCTGC
 TGATAAAGCATTCTTTGATGACAGATATGCTTCAAGGAGCCATCAGGCAAGGATAGCCACCCTCTACCT
 GCCTCTGTTTGGTCTGCTGATTGAAAACGTCCAGCGGATCAATGTGAGGGATGTGTACCCTTCCCTGTG
 AACCGGGCATGACTGTGAAGGATGAATCCCTGGCTCTACCAGCTGTGAATCCGCTGGTGACGCCGAGA
 AGGGAAGCACCCCTGGACAACAGCCTGCACAAGGACCTGCTGGGCCCATCTCCGGCATTGCTTCCATA
 TACAACCTCAACTCCAAACATCAACAGTGTGAGAAATGCTGATTCGAGAGGATCTCTCATAGCACAGAT
 TCGGGTAAACAGCCTCCAGAAAGGAATAGTGAGAAGAGCAATTCCTGGATAAGCACCAACAAAGTAGCA
 CATTGGGAAATCCGTTGTTGCTGTGATAAACTTGACCAGTCTGAGATTAAGAGCCTACTGATGTGTTT
 CCTCTACATCTTAAAGAGCATGTCTGATGATGCTTTGTTTACATATTGGAACAAGGCTTCAACATCTGAA
 CTTATGGATTTTTTACAATATCTGAAGTCTGCCTGCACCAGTCCAGTACATGGGAAGCGATACATAG
 CCAGAACAGGAATGATGCATGCCAGATTTGCAGCAGCTGGGCAGCCTGGATAACTCTCTACTTTTAAACA
 CAGCTATGGCCACTCGGACGAGATGTTCTGCACCAGTCACTTGAAGCCAACATTGCTACTGAGGTT
 TGCTTGCAGACTCTGGACAGCTTTCTCTATTTACATTGGCGTTTAAAGAACCAGCTCCTGGCCGACCATG
 GACATAATCCTCTCATGAAAAAAGTTTTGATGTCTACCTGTGTTTTCTTCAAAAACATCAGTCTGAAAC
 GGCTTTAAAAAATGCTTCACTGCCTTAAAGTCTTAAATTTATAAGTTTCCCTCAACATTCTATGAAGGG
 AGAGCGGACATGTGTGCGGCTCTGTGTTACGAGATTCTCAAGTGTGTAACCTCAAGCTGAGCTCCATCA
 GGACGGAGGCTCCAGCTGCTCTACTTCTGATGAGGAACAACCTTTGATTACACTGGAAGAAGTCCCTT
 TGTCCGGACACATTTGCAAGTATCATATCTGTCCAGCTGATAGCAGACGTTGTTGGCATTGGGGGA
 ACCAGATTCAGCAGTCCCTGTCCATCATCAACAACGTGCCAACAGTGACCGGCTTATTAAGCACACCA
 GCTTCTCCTCTGATGTGAAGGACTTAAACAAAAGGATACGCACGGTGTCTAATGGCCACCGCCAGATGAA
 GGAGCATGAGAAGCAGCCAGAGATGCTGGTGGACCTCCAGTACAGCCTGGCCAAATCCTATGCCAGCAG
 CCCGAGCTCAGGAAGACGTGGCTCGACAGCATGGCCAGGATCCATGTCAAAAATGGCGATCTCTCAGAGG
 CAGCAATGTGCTATGTCCACGTAACAGCCCTAGTGGCAGAATACTCACACGGAAGAAGCAGTCCAGTG
 GGAGCCGCCCTTCTCCCCACAGCCATAGCGCCTGCCTGAGGAGGAGCCGGGGAGGCGTGTGTAGACAA
 GGATGCACCGCCTCAGGGTCATTACCCCAAACATCGACGAGGAGGCTCCATGATGGAAGACGTGGGGA

TGCAGGATGTCCATTTCAACGAGGATGTGCTGATGGAGCTCCTTGAGCAGTGCGCAGATGGACTCTGGAA
AGCCGAGCGCTACGAGCTCATTGCCGACATCTACAACTTATCATCCCCATTTATGAGAAGCGGAGGGAT
TTTGAGAGGCTGGCCATCTGTATGACACGCTGCACCGGGCTACAGCAAAGTGACCGAGGTCATGCACT
CGGGCCGAGGCTTCTGGGGACCTACTCCGGGTAGCCTTCTTCGGGCAGGCAGCGCAATACCAGTTTAC
AGACAGTGAAACAGATGTGGAGGGATCTTTGAAGATGAAGATGGAAAGGAGTATATTTACAAGGAACCC
AAACTCACACCGCTGTCGAAATTTCTCAGAGACTCCTTAACTGTAAGTCTCGGATAAATTTGGTTCTGAAA
ATGTCAAATGATACAGGATTCTGGCAAGTCAACCCTAAGGATCTGGATTCTAAGTATGCCTACATCCA
GGTGACTCAGTCATCCCCTTCTTTGACGAAAAAGAGTTGCAAGAAAGGAAAACAGAGTTTGAGAGATCC
CACAACATCCGCCGCTTCATGTTTGAGATGCCATTTACGCAGACCGGAAAGAGGCAGGGCGGGTGGAAAG
AGCAGTGCAAACGGCGCACCATCCTGACAGCCATACACTGCTTCCCTTATGTGAAGAAGCGCATCCCTGT
CATGTACCAGCACCACACTGACCTGAACCCATCGAGGTGGCCATTGACGAGATGAGTAAGAAGGTGGCG
GAGCTCCGGCAGCTGTGCTCCTCGGCCGAGGTGGACATGATCAAAGTGCAGCTCAAAGTCCAGGGCAGCG
TGAGTGTTCAGGCAATGCTGGCCCACTAGCATATGCGCGAGCTTCTTAGATGATACAAACACAAAGCG
ATATCCTGACAATAAAGTGAAGCTGCTTAAGGAAGTTTTAGGCAATTTGTGGAAGCTTGGCGTCAAGCC
TTAGCGGTAACGAACGTCTGATTAAGAAGACCAGCTCGAGTATCAGGAAGAAATGAAAGCCAAGTACA
GGGAAATGGCGAAGGAGCTTTCTGAAATCATGCATGAGCAGCTGGGA

AGCGGACCGACGCGTACGCGGCCGCTCGAG - GFP Tag - GTTTAA

Protein Sequence: >RG214044 representing NM_015296
 Red=Cloning site Green=Tags(s)

```

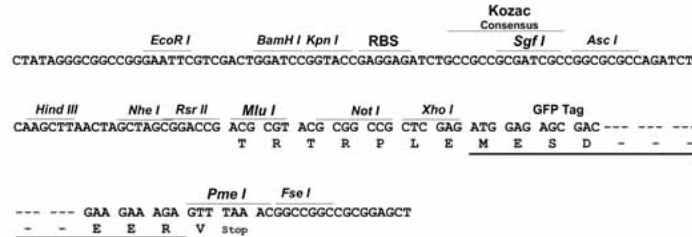
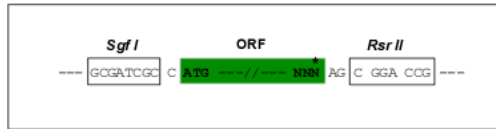
MSQPPLLPASAETRFKTRALSKPGTAAELRQSVSEVVRGVSLLAKPKLIEPLDYENVIVQKKTQILNDCL
REMLLFPYDDFQTAILRRQGRYICSTVPAKAEAAAQSLFVTECIKTYNSDWHLVNYKYEDYSGEFRQLPN
KVVKLDKLPVHVVEVDDEVDKDEDAASLGSQKGGITKHGWLKGNMNSAISVTMRSEKRRFFHLLIQLGDG
SYNLNFYKDEKISKEPKGSIFLDSCMGVVQNNKVRRAFELKMQDKSSYLLAADSEVEMEWEWITILNKIL
QLNFEAAMQEKRNQDSEHDEQSKLESGSGLDSYLPKAKSAREAEIKLSESRVKLFYLDPAQKLDLDF
SSAEPEVKSFEKFGKRILVKCNDLSFNLQCCVAENEEGPTTNVEPFFVTLSLFDIKYNRKISADFHVDL
NHFSVRQMLATTSPALMNGSGQSPSVLKGILHEAAMQYKQGIKSVTCPPHPIFLVARIEKVLQGSITHC
AEPYMKSSDSSKVAQKVLKNAKQACQRLGQYRMPFAWAARTLFDKASGNLKNARFSAIYRQDSNKLSD
DMLKLLADFRKPEKMAKLPVILGNLDITIDNVSSDFPNYVNSSYIPTKQFETCSKTPITFEVEEFVPCIP
KHTQPYTIYTNHLYVYPKYLKYDSQKSAKARNIAICIEFKDSDEEDSQPLKCIYGRPGGPVTRSAFAA
VLHHHQNPPEFYDEIKIELPTQLHEKHHLLTFFHVSCDNSKSGSTKKRDVVETQVGSWLPKLDKGRVVT
SEQHIPVSANLPSGYLGYQELGMGRHYGPEIKWVDGGKPLKISTHLVSTVYTQDQHLHNFQYQCKTES
GAQALGNELVKYLKSLHAMEGHVIAFLPTILNQLFRVLTRATQEEVAVNVTRVIIHVVAQCHEEGLESH
LRSYVYKAYKAEPYVASEYKTVHEELTKSMTTILKPSADFLTSNKLKYSWFFFDVLIKSMAQHLIENSK
VKLLRNQRFPAHYHAVETVVNMLMPHITQKFRDNPEASKNANHSLAVFIKRCFTFMDRGRVFKQINNYI
SCFAPGDPKTLFEYKFEFLRVVCNHEHYIPLNLPMPFGKGRIQRYQDLQLDYSLTDFEFCRNHFLVGLLR
EVGTALQEFREVRLIAISVLKNLLIKHSFDDRYASRSHQARIATLYLPLFGLLIENVQRINVRDVSFPFV
NAGMTVKDESLALPAVNPLVTPQKGSTLDNSLHKDLLGASGIA SPYTTSTPNINSVRNADSRGSLISTD
SGNSLPERNSEKSNLSDKHQSSSTLGNVVRCDKLDQSEIKSLLMCFYLILKSMDDALFTYWNKASTSE
LMDFFTISEVCLHQFYMGKRYIARTGMMHARLQQLGSLDNLTFNHSYGHSDADVLHQSLLEANIATEV
CLTALDTLSLFTLAFKNQLLADHGHNPLMKKVFVYLCFLQKHQSETALKNVFTALRSLIYKFPSTFYEG
RADMCAALCYEILKCCNSKLSIRTEASQLLYFLMRNFDYTGKKSFVRTHLQVIVSVSqliADVVIGG
TRFQQSLSIINNCANSRDLIKHTSFSSDVKDLTKRIRTVLMATAQMKEHENDPEMLVDLQYSLAKSYAST
PELRKRWLDSMARIHVKNGDLSEAMCYVHVTALVAEYLTRKEAVQWEPPLPHSHSACLRRSRGGVFRQ
GCTAFRVITPNIDEEASMMEDVGMQDVHFNEDVLMELLEQCADGLWKAERYELIADIYKLIPIYKRRD
FERLAHLYDTHRAYSKVTEVMHSGRRLGTYFRVAFFGQAAQYQFTDSETDVEGFFEDEDGKEYIYKEP
KLTPLEISQRLKLYSDKFGSENVKMIQDSGKVNPKDLDSKYAYIQVTHVIPFFDEKELQERKTEFERS
HNIRRFMFEMPFTQTGKRQGGVEEQCKRRTILTAIHCFYVKKRIPVMYQHHTDLNPIEVAIDEMSKKVA
ELRQLCSSAEVDMIKLQLKLGQSVSVQVNAGPLAYARAFLLDDTNTKRYPDNKVKLLKEVFRQFVEACGQA
LAVNERLIKEDQLEYQEEMKANYREMAKELSEIMHEQLG
  
```

SGPTRRRLE - GFP Tag - V

Restriction Sites: SgfI-RsrII

Cloning Scheme:

Cloning sites used for ORF Shuttling:


ACCN: NM_015296

ORF Size: 6207 bp

OTI Disclaimer: The molecular sequence of this clone aligns with the gene accession number as a point of reference only. However, individual transcript sequences of the same gene can differ through naturally occurring variations (e.g. polymorphisms), each with its own valid existence. This clone is substantially in agreement with the reference, but a complete review of all prevailing variants is recommended prior to use. [More info](#)

OTI Annotation: This clone was engineered to express the complete ORF with an expression tag. Expression varies depending on the nature of the gene.

Components: The ORF clone is ion-exchange column purified and shipped in a 2D barcoded Matrix tube containing 10ug of transfection-ready, dried plasmid DNA (reconstitute with 100 ul of water).

Reconstitution Method:

1. Centrifuge at 5,000xg for 5min.
2. Carefully open the tube and add 100ul of sterile water to dissolve the DNA.
3. Close the tube and incubate for 10 minutes at room temperature.
4. Briefly vortex the tube and then do a quick spin (less than 5000xg) to concentrate the liquid at the bottom.
5. Store the suspended plasmid at -20°C. The DNA is stable for at least one year from date of shipping when stored at -20°C.

RefSeq: [NM_015296.1](#), [NP_056111.1](#)
RefSeq Size: 7522 bp

RefSeq ORF: 6210 bp

Locus ID: 23348

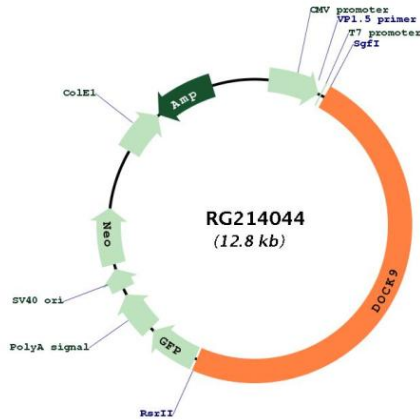
UniProt ID: [Q9BZ29](#)

Cytogenetics: 13q32.3

Domains: PH

Gene Summary: Guanine nucleotide-exchange factor (GEF) that activates CDC42 by exchanging bound GDP for free GTP. Overexpression induces filopodia formation.[UniProtKB/Swiss-Prot Function]

Product images:



Circular map for RG214044