

## Product datasheet for **RG214040**

### ZNF37A (NM\_003421) Human Tagged ORF Clone

#### Product data:

Product Type:	Expression Plasmids
Product Name:	ZNF37A (NM_003421) Human Tagged ORF Clone
Tag:	TurboGFP
Symbol:	ZNF37A
Synonyms:	KOX21; ZNF37
Mammalian Cell Selection:	Neomycin
Vector:	pCMV6-AC-GFP (PS100010)
E. coli Selection:	Ampicillin (100 ug/mL)



[View online »](#)

**ORF Nucleotide Sequence:**

>RG214040 representing NM\_003421  
 Red=Cloning site Blue=ORF Green=Tags(s)

TTTTGTAATACGACTCACTATAGGGCGGCCGGAATTCGTCGACTGGATCCGGTACCGAGGAGATCTGCC  
 GCC**CGGATCGCC**

ATGATCACATCCCAGGGATCAGTGTCTGTTAGGGATGTGACTGTGGGCTTCACTCAAGAGGAGTGGCAGC  
 ATCTGGACCCTGCTCAGAGGACCCTGTACAGGGATGTGATGCTGGAGAACTACAGCCACCTTGTCTCAGT  
 AGGGTATTGCATTCTAAACCAGAAGTGATTCTCAAGTTGGAGAAAGCGAGGAGCCATGGATATTAGAG  
 GAAAAATTTCAAAGCCAGAGTCACTCTGGAATTAATTAATACCAGTAGAACTATTCAATAATGAAGTTCA  
 ATGAGTTTAAACAAAGGTGGAAAAATGTTTCTGTGATGAAAAGCATGAAATAATTCATTCTGAAGAGGAACC  
 TTCTGAATATAATAAAAAATGGGAACAGCTTCTGGCTGAATGAAGACCTCATTGGCATCAGAAAAATAAA  
 AATTGGGAACAATCTTTGAATACAATGAATGTGGGAAAGCTTCCCTGAGAATCACTCTTCTGTGAC  
 ATAAGAGAGGTTACACAGGACAGAAAACCTGCAAAATACTGAACATGGGAAAACCTGTGATATGCATT  
 TTTCACTACTCATCAGCAACACATCCAAGAGAAAACCACTATGGTAATGAATGTGGAGAAAATATCTTT  
 GAGGAATCCATTCTCTTGAACATCAGAGTGTTTACCCATTACAGCCAGAAGTTAAATCTCACTCCAATTC  
 AGAGAACCCTCAATTAACAATATTATTGAATATAATGAGTGTGGAAACATTTTTCACTGAAAAATTAGT  
 CCTTCAATTTACAACAGAGAACACATACAGGAGAAAAACCTTATGAATGTCATGAATGTGGAAAAACCTTC  
 ACCCAGAAGTCAGCCACACAAGACATCAGAGAACACACAGGGGGAAAAACCTATGAATGTCATGAAT  
 GTGGGAAGACCTTCTATAAGAATTCAGACCTCATTAAACATCAAAGAATTCATACAGGGGAGAGACCTTA  
 TGGATGTCATGAATGTGGGAAATCCTTCAGTGAAGTCAACCTTACTCAACATCAAAGAAGCAGACACA  
 GGGGAGAAACCATATGAATGTCATGAATGTGGGAAAACCTTCTCATTAAAGTCAGTCTTACTGTGCATC  
 AGAAAACACACACAGGGGAGAAGCCCTATGAATGCTATGCATGTGGGAAAGCCTTCTCAGAAAAATCAGA  
 CCTCATTAAACATCAAAGAATACACACAGGTGAAAAACCTTATGAATGAATGAATGTGGGAAAGTCATT  
 TCTGAGAAGTCAACCTTACTAAACATCTAAGAACTCACACAGGTGAGAAACCTTATGAATGATTCAGT  
 GTGGAAAAATTTTCTGCTACTACTCCGGTTTACAGAACATCTGAGAAGACACACAGGGGAGAAACCTTT  
 TGGATGAATGAATGTGGGAAAACCTTCCGTCAGAAAGTCAGCCCTAATTGTTCCACAGAGAACTCATATA  
 AGACAGAAACCTATGGATGTAATCAATGTGGAAAATCATTCTGTGTGAAGTCAAACCTCATTGCACATC  
 ATAGAACACACACAGGGGAGAAACCTATGAATGTAATGTTTGTGGAAAATCATTCTATGTTAAGTCAA  
 ACTAAGTGTACATCAGAGAATACACTTGGGGAGAAACCTATAAATGTAGTAAACGAGGGAAATTAATCT  
 GGG

**ACGCGT**ACGCGGCCGCTCGAG - GFP Tag - GTTTAA

**Protein Sequence:**

>RG214040 representing NM\_003421  
 Red=Cloning site Green=Tags(s)

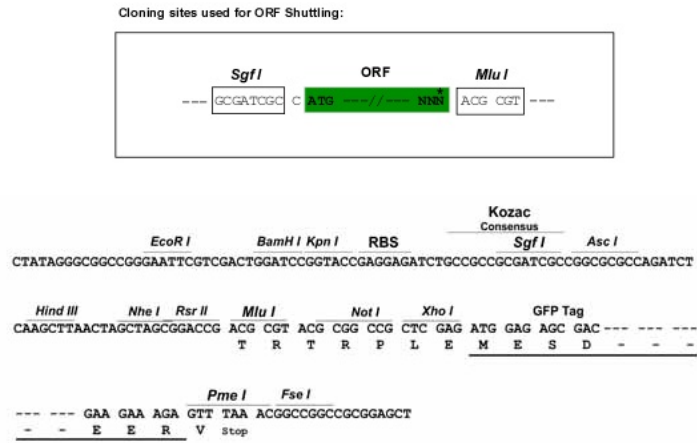
MITSQGSVSFRDVTVGFTQEWEQHLDPQRRLYRDVMLENYSHLVSVGYCIPKPEVILKLEKGEWPWILE  
 EKFPSQSHLELINTSRNYSIMKFNEFNKGKCFDEKHEIIHSEEEPSEYNKNGNSFWLNEDLIWHQKIK  
 NWEQSFEYNECGKAFPENSLFLVHKRGYTGQKTKYTEHGKTCDSFFITHQQTHPRENHYGNECGENIF  
 EESILLEHQSVYVPSQKLNLTPIQRTHSINNIIEYNECGTFFSEKLVHLQQRTHTGEKPYECHECGKTF  
 TQKSAHTRHQRTHTGGKPYECHECGKTFYKNSDLIKHQRIHTGERPYGCHCGKSFSEKSTLTQHQRTH  
 GEKPYECHECGKTFSEKSVLTVHQKTHTGEKPYECYACGKAFLRSDLIKHQRIHTGEKPYECNECGKSF  
 SEKSTLTKHLRHTHTEKPYECIQCGKFFCYYSGFTEHLRRHTGEKPFGCNECGKTFRQKSALIVHQRTHI  
 RQKPYGCNQCCKSFCVKSKLIAHHRHTHTEKPYECNVCGKSFYVYKSKLTVHQRHILGRNPINVVNEGNYS  
 G

**TRTRPLE** - GFP Tag - V

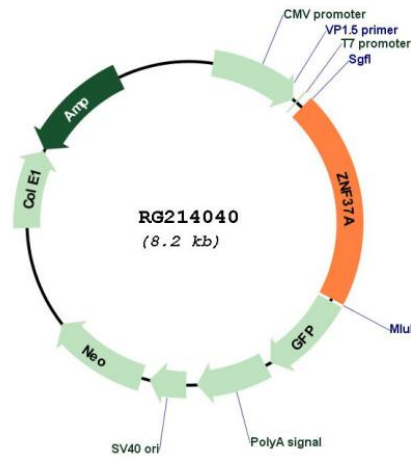
**Restriction Sites:**

SgfI-MluI

Cloning Scheme:



Plasmid Map:



ACCN: NM\_003421  
 ORF Size: 1683 bp

<b>OTI Disclaimer:</b>	The molecular sequence of this clone aligns with the gene accession number as a point of reference only. However, individual transcript sequences of the same gene can differ through naturally occurring variations (e.g. polymorphisms), each with its own valid existence. This clone is substantially in agreement with the reference, but a complete review of all prevailing variants is recommended prior to use. <a href="#">More info</a>
<b>OTI Annotation:</b>	This clone was engineered to express the complete ORF with an expression tag. Expression varies depending on the nature of the gene.
<b>Components:</b>	The ORF clone is ion-exchange column purified and shipped in a 2D barcoded Matrix tube containing 10ug of transfection-ready, dried plasmid DNA (reconstitute with 100 ul of water).
<b>Reconstitution Method:</b>	<ol style="list-style-type: none"><li>1. Centrifuge at 5,000xg for 5min.</li><li>2. Carefully open the tube and add 100ul of sterile water to dissolve the DNA.</li><li>3. Close the tube and incubate for 10 minutes at room temperature.</li><li>4. Briefly vortex the tube and then do a quick spin (less than 5000xg) to concentrate the liquid at the bottom.</li><li>5. Store the suspended plasmid at -20°C. The DNA is stable for at least one year from date of shipping when stored at -20°C.</li></ol>
<b>RefSeq:</b>	<a href="#">NM_003421.3</a>
<b>RefSeq Size:</b>	6573 bp
<b>RefSeq ORF:</b>	1686 bp
<b>Locus ID:</b>	7587
<b>UniProt ID:</b>	<a href="#">P17032</a>
<b>Cytogenetics:</b>	10p11.1
<b>Protein Families:</b>	Transcription Factors
<b>Gene Summary:</b>	May be involved in transcriptional regulation.[UniProtKB/Swiss-Prot Function]