

## Product datasheet for **RG213968**

### RNF38 (NM\_194330) Human Tagged ORF Clone

#### Product data:

Product Type:	Expression Plasmids
Product Name:	RNF38 (NM_194330) Human Tagged ORF Clone
Tag:	TurboGFP
Symbol:	RNF38
Mammalian Cell Selection:	Neomycin
Vector:	pCMV6-AC-GFP (PS100010)
E. coli Selection:	Ampicillin (100 ug/mL)
ORF Nucleotide Sequence:	>RG213968 representing NM_194330 Red=Cloning site Blue=ORF Green=Tags(s)

TTTTGTAATACGACTCACTATAGGGCGGCCGGGAATTCGTCGACTGGATCCGGTACCGAGGAGATCTGCC  
GCC**CGATCGCC**

ATGCGACCATGGGAGATGACATCAAATAGGCAGCCCCCTTCAGTTCGACCAAGCCAACATCACTTCTCAG  
GGGAACGATGCAACACACCTGCACGCAACAGAAGAAGTCTCTGTCCAGGCGCCAGAGAGGAAGAAGGGA  
TCGTCTGTCTCGACATAATTCCATTAGTCAAGATGAAACTATCACCATCTCCCTACGCACAGCAGCAA  
GCAATAGAGGAGCCTCGAGCCTCCACCCTCCGAATGTATCTCCCGTCTGCTACATCTGTCTCATC  
CACCCAGCAGAATGCAGTCATGGTTGACATACATGATCAGCTCCATCAAGGAACAGTCCCTGTTTCTTA  
CACAGTAACAACAGTGGCACCACATGGGATTCCACTCTGCACAGGCCAGCACATCCCTGCTTGTAGTACA  
CAGCAGGTCCCAGGATGCTCTGTGGTTTTTCAGTGGACAGCACCTCCCTGTCTGTAGTGTGCTCCCTCCAA  
TGCTTCAGGCATGTTTCAGTTCAGCACTTACCAGTACCATATGCTGCATCCACCCCTTATTTCTAGTGA  
TCCATTTCTTATACATCCTCCTCACCTTCTCCCATCATCCTCCTCATTGCCACCACCAGGCCAGTTT  
GTCCCTTTCCAAACACAGCAATCACGATCGCCTCTGCAAAGGATAGAAAATGAAGTGAACCTTAGGAG  
AACATCTCCAGTAGGAGGTTTTACTTACCCTCCATCAGCCACCCCAACATTACCTCCATCAGCTCC  
CTTGCAGTCTTAACACATGATCCTTTGCATCAGGAGGTGCTCTTGGAGTACCTTATCCTCCATTTATG  
CCTCGGAGGCTTACAGGACGTAGTAGATACCGATCCCAGCAGCCAATACCACCTCCCTTATCATCCCA  
GCTTACTGCCATATGTGTTATCAATGCTTCCAGTGCCACCTGCAGTGGGCCCAACTTTCAGCTTTGAATT  
AGATGTAGAAGATGGAGAAGTAGAAAATTACGAGGCCCTGTTAAACCTGGCAGAGCGACTGGGAGAGGCA  
AAGCCTCGTGGACTGACTAAAGCAGATATTGAACAACCTCCTTCTTATCGGTTCAATCCTAACAACCACC  
AGTCAGAACAGACTTTGTGTGTAGTATGCATGTGTGATTTTGGAGTCAAGGCAGCTACTTAGAGTCTTACC  
CTGTAACCACGAGTTCATGCCAAGTGTGTTGACAAATGGCTTAAGGCAAATCGTACTTGCCCAATTTGC  
CGAGCTGATGCTTCAGAAGTGCATCGGGATTTCAGAA

**ACGCGT**ACGCGGCCGCTCGAG - GFP Tag - GTTTAA



[View online »](#)

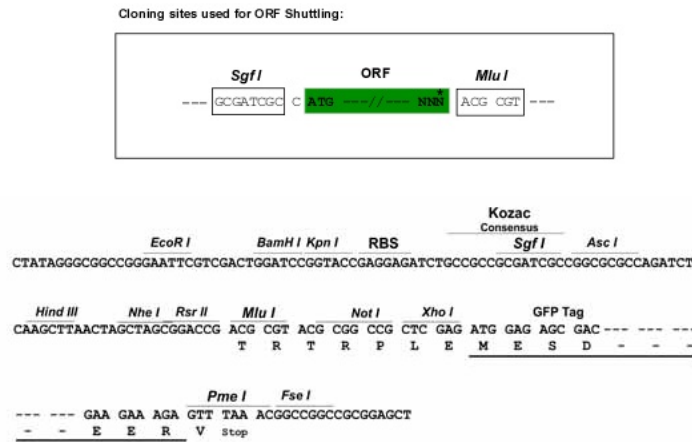
**Protein Sequence:** >RG213968 representing NM\_194330  
 Red=Cloning site Green=Tags(s)

MRPWEMTSNRQPPSVRPSQHHSFSGERCNTPARNRRSPPVRRQRGRDRRLSRHNSISQDENYHHLPLYAQQQ  
 AIEEPRAFHPNVSRLHLHPAAHPPQNAVVMVDIHDQLHQGTVPVSYTVTTVAPHGIPLCTGQHIPACST  
 QQVPGCSVVFSGQHLPLVCSVPPMLQACSVQHLVPVYAAFPLISSDPFLIHPPHLSPHHPPHLPVPPGQF  
 VPFQTQQRSPQLQRIENEVELLGEHLVPGGFTYPPSAHPPTLPPSAPLQFLTHDPLHQEVSFVGPYPPFM  
 PRRLTGRSRYRSQQPIPPPPYHPSLLPYVLSMLPVPPAVGPTFSFELDVEDGEVENYEALLNLAERLGEA  
 KPRGLTKADIEQLPSYRFNPNNHQSEQTL CVVCMCDFESRQLLRVLP CNHEFHA KCVDKWLKANRTCPIC  
 RADASEVHRDSE

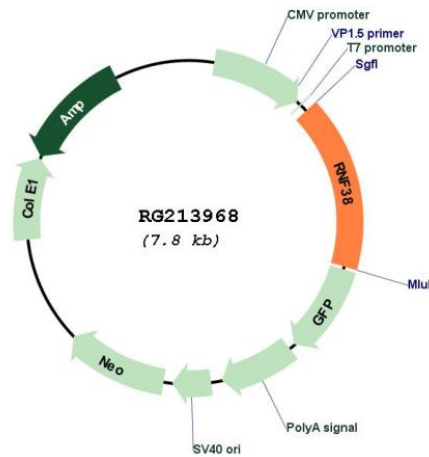
TRTRPLE - GFP Tag - V

**Restriction Sites:** SgfI-MluI

**Cloning Scheme:**



**Plasmid Map:**



<b>ACCN:</b>	NM_194330
<b>ORF Size:</b>	1296 bp
<b>OTI Disclaimer:</b>	The molecular sequence of this clone aligns with the gene accession number as a point of reference only. However, individual transcript sequences of the same gene can differ through naturally occurring variations (e.g. polymorphisms), each with its own valid existence. This clone is substantially in agreement with the reference, but a complete review of all prevailing variants is recommended prior to use. <a href="#">More info</a>
<b>OTI Annotation:</b>	This clone was engineered to express the complete ORF with an expression tag. Expression varies depending on the nature of the gene.
<b>Components:</b>	The ORF clone is ion-exchange column purified and shipped in a 2D barcoded Matrix tube containing 10ug of transfection-ready, dried plasmid DNA (reconstitute with 100 ul of water).
<b>Reconstitution Method:</b>	<ol style="list-style-type: none"><li>1. Centrifuge at 5,000xg for 5min.</li><li>2. Carefully open the tube and add 100ul of sterile water to dissolve the DNA.</li><li>3. Close the tube and incubate for 10 minutes at room temperature.</li><li>4. Briefly vortex the tube and then do a quick spin (less than 5000xg) to concentrate the liquid at the bottom.</li><li>5. Store the suspended plasmid at -20°C. The DNA is stable for at least one year from date of shipping when stored at -20°C.</li></ol>
<b>RefSeq:</b>	<a href="#">NM_194330.2</a> , <a href="#">NP_919311.1</a>
<b>RefSeq Size:</b>	4999 bp
<b>RefSeq ORF:</b>	1299 bp
<b>Locus ID:</b>	152006
<b>UniProt ID:</b>	<a href="#">Q9H0F5</a>
<b>Cytogenetics:</b>	9p13.2
<b>Protein Families:</b>	Druggable Genome
<b>Gene Summary:</b>	This gene encodes a protein with a coiled-coil motif and a RING-H2 motif (C3H2C2) at its carboxy-terminus. The RING motif is a zinc-binding domain found in a large set of proteins playing roles in diverse cellular processes including oncogenesis, development, signal transduction, and apoptosis. Multiple transcript variants encoding different isoforms have been found for this gene. [provided by RefSeq, Dec 2008]