

## Product datasheet for **RG213935**

### **RABL2B (NM\_007081) Human Tagged ORF Clone**

#### Product data:

**Product Type:** Expression Plasmids  
**Product Name:** RABL2B (NM\_007081) Human Tagged ORF Clone  
**Tag:** TurboGFP  
**Symbol:** RABL2B  
**Mammalian Cell Selection:** Neomycin  
**Vector:** pCMV6-AC-GFP (PS100010)  
**E. coli Selection:** Ampicillin (100 ug/mL)  
**ORF Nucleotide Sequence:** >RG213935 representing NM\_007081  
Red=Cloning site Blue=ORF Green=Tags(s)

TTTTGTAATACGACTCACTATAGGGCGGCCGGAATTCGTCGACTGGATCCGGTACCGAGGAGATCTGCC  
GCC**CGATCGCC**

ATGGCAGAAGACAAAACCAACCGAGTGAGTTGGACCAAGGGAAGTATGATGCTGATGACAACGTGAAGA  
TCATCTGCCTGGGAGACAGCGCAGTGGGCAAATCCAACTCATGGAGAGATTTCTCATGGATGGCTTTCA  
GCCACAGCAGCTGTCCACGTACGCCCTGACCCTGTACAAGCACACAGCCACGGTAGATGGAAGGACCATC  
CTTGTGGACTTTTGGGACACGGCAGGCCAGGAGCGGTTCCAGAGCATGCATGCCTCCTACTACCAAGG  
CCCACGCCTGCATCATGGTGTGGTGTACAGAGGAAAGTCACCTATAGGAACCTGAGCAGCTGGTATAC  
AGAGCTTCGGGAGTTTCCAGGCCAGAGATCCCATGCATCGTGGTGGCCAATAAAATTGATGACATAAACGTG  
ACCCAAAAAAGCTTCAATTTTGCCAAGAAGTTCTCCCTGCCCTGTATTTCTGCTCGGCTGCTGATGGTA  
CCAATGTTGTGAAGCTCTTCAATGATGCAATTCGATTAGCTGTGTCTTACAAACAGAAGCTCCAGGACTT  
CATGGATGAGATTTTTCAGGAGCTCGAGAACTTCAGCTTGGAGCAGGAAGAGGAGGACGTGCCAGACCAG  
GAACAGAGCAGCAGCATCGAGACCCATCAGAGGAGGCGGCTCTCCCCACAGC

**ACGCGTACGCGGCCGCTCGAG** - GFP Tag - GTTTAA

**Protein Sequence:** >RG213935 representing NM\_007081  
Red=Cloning site Green=Tags(s)

MAEDKTKPSELDQGYDADDNVKIIICLGDSAVGKSKLMERFLMDGFQPQQLSTYALTYKHTATVDGRTI  
LVDFWDTAGQERFQSMHASYYHKAHACIMVFDVQRKVTYRNLSTWYTELREFRPEIPCIVVANKIDDINV  
TQKSFNFAKKFSPLLYFVSAADGTNVVKLFNDAIRLAVSYKQNSQDFMDEIFQELNFSLEQEEEDVPDQ  
EQSSSIETPSEEAASPHS

**TRTRPLE** - GFP Tag - V

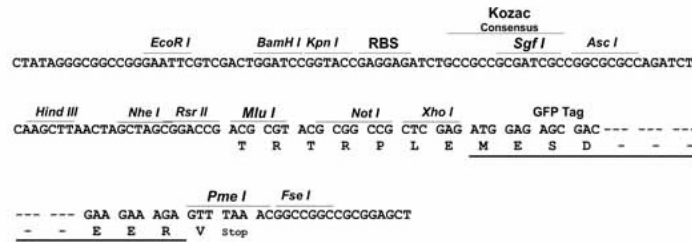
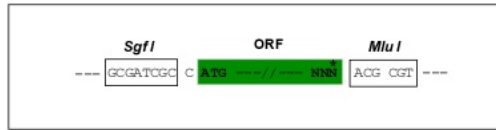


[View online »](#)

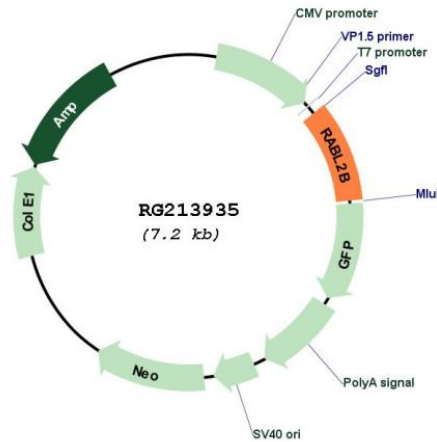
Restriction Sites: SgfI-MluI

Cloning Scheme:

Cloning sites used for ORF Shutting:



Plasmid Map:



ACCN: NM\_007081

ORF Size: 684 bp

OTI Disclaimer: The molecular sequence of this clone aligns with the gene accession number as a point of reference only. However, individual transcript sequences of the same gene can differ through naturally occurring variations (e.g. polymorphisms), each with its own valid existence. This clone is substantially in agreement with the reference, but a complete review of all prevailing variants is recommended prior to use. [More info](#)

OTI Annotation: This clone was engineered to express the complete ORF with an expression tag. Expression varies depending on the nature of the gene.

<b>Components:</b>	The ORF clone is ion-exchange column purified and shipped in a 2D barcoded Matrix tube containing 10ug of transfection-ready, dried plasmid DNA (reconstitute with 100 ul of water).
<b>Reconstitution Method:</b>	<ol style="list-style-type: none"><li>1. Centrifuge at 5,000xg for 5min.</li><li>2. Carefully open the tube and add 100ul of sterile water to dissolve the DNA.</li><li>3. Close the tube and incubate for 10 minutes at room temperature.</li><li>4. Briefly vortex the tube and then do a quick spin (less than 5000xg) to concentrate the liquid at the bottom.</li><li>5. Store the suspended plasmid at -20°C. The DNA is stable for at least one year from date of shipping when stored at -20°C.</li></ol>
<b>RefSeq:</b>	<u>NM_007081.4</u>
<b>RefSeq Size:</b>	2183 bp
<b>RefSeq ORF:</b>	687 bp
<b>Locus ID:</b>	11158
<b>UniProt ID:</b>	<u>Q9UNT1</u>
<b>Cytogenetics:</b>	22q13.33
<b>Domains:</b>	ras, RAN, RAS, RHO, RAB
<b>Protein Families:</b>	Druggable Genome
<b>Gene Summary:</b>	The RABL2B protein is a member of the RAB gene family which belongs to the RAS GTPase superfamily. RABL2B is located within a subtelomeric region of 22q13.3. Multiple alternatively spliced transcript variants encoding several different isoforms have been found for this gene. [provided by RefSeq, Aug 2008]