

## Product datasheet for **RG213919**

### CACNA1G (NM\_198384) Human Tagged ORF Clone

#### Product data:

Product Type:	Expression Plasmids
Product Name:	CACNA1G (NM_198384) Human Tagged ORF Clone
Tag:	TurboGFP
Symbol:	CACNA1G
Synonyms:	Ca(V)T.1; Cav3.1; NBR13; SCA42; SCA42ND
Mammalian Cell Selection:	Neomycin
Vector:	pCMV6-AC-GFP (PS100010)
E. coli Selection:	Ampicillin (100 ug/mL)
ORF Nucleotide Sequence:	>RG213919 representing NM_198384 Red=Cloning site Blue=ORF Green=Tags(s)

TTTTGTAATACGACTCACTATAGGGCGGCCGGAATTCGTCGACTGGATCCGGTACCGAGGAGATCTGCC  
GCC**CGATCGCC**

ATGGACGAGGAGGAGGATGGAGCGGGCCGAGGAGTCGGGACAGCCCCGGAGCTTCATGCGGCTCAACG  
ACCTGTGGGGCCGGGGCCGGCCGGGGCCGGGGTCCAGCAGAAAAGGACCCGGGCGCGGACTCCGA  
GGCGGAGGGGCTGCCGTACCCGGCGCTGGCCCCGGTGGTTTTCTCTACTTGAGCCAGGACAGCCGCCG  
CGGAGCTGGTGTCTCCGACGGTCTGTAACCCCTGGTTTGAGCGCATCAGCATGTTGGTCATCCTTCTCA  
ACTGCGTGACCCCTGGGCATGTTCCGGCCATGCGAGGACATCGCCTGTGACTCCCAGCGCTGCCGGATCCT  
GCAGGCCCTTGTGACTTCATCTTTGCCTTCTTTGCCGTGGAGATGGTGGTGAAGATGGTGGCCTTGGGC  
ATCTTTGGGAAAAAGTGTACCTGGGAGACACTTGAACCCGGCTTGAATTTTTCATCGTCATCGCAGGGA  
TGCTGGAGTACTCGTGGACCTGCAAGACGTCAGCTTCTCAGCTGTGAGGACAGTCCGTGTGCTGCGACC  
GCTCAGGGCCATTAACCGGGTGCCAGCATGCGCATCCTGTGACGTTGCTGCTGGATACGCTGCCCATG  
CTGGGCAACGTCCTGCTGCTCTGCTTCTTCGTCTTCTTCATCTTCGGCATCGTCGGCGTCCAGCTGTGGG  
CAGGGCTGCTTCGGAACCGATGCTTCTACCTGAGAATTCAGCCTCCCCCTGAGCGTGGACCTGGAGCG  
CTATTACCAGACAGAGAACGAGGATGAGAGCCCCCTTCACTGCTCCAGCCACGCGAGAACGGCATGCGG  
TCCTGCAAGCGTGCCACGCTGCGCGGGGACGGGGCGGTGGCCACCTTGGCGTCTGGACTATGAGG  
CCTACAACAGCTCCAGCAACACCACCTGTGTCACTGGAACCACTACTACCAACTGCTCAGCGGGGA  
GCACAACCCCTTCAAGGGCGCCATCAACTTTGACAACATTGGCTATGCCTGGATCGCCATCTTCCAGGTC  
ATCAGCTGGAGGGCTGGGTCGACATCATGTAATTTGTGATGGATGCTCATTCTTCTACAATTTTCATCT  
ACTTCATCCTCCTCATCATCGTGGGCTCCTTCTCATGATCAACCTGTGCTGGTGGTATTGCCACGCA  
GTTCTCAGAGACCAAGCAGCGGAAAGCCAGCTGATGCGGGAGCAGCGTGTGCGGTTCTGTCCAACGCC  
AGCACCCTGGCTAGCTTCTGTAGCCCGGACGCTGCTATGAGGAGCTGCTCAAGTACCTGGTGTACATCC  
TTCGTAAGGCAGCCCGCAGGCTGGCTCAGGTCTCTCGGGCAGCAGGTGTGCGGGTGGGCTGCTCAGCAG  
CCCAGCACCCCTCGGGGCCAGGAGACCAGCCAGCAGCAGCTGCTCTGCTCCACCGCCGCTATCC



[View online »](#)

GTCCACCACCTGGTGCACCACCACCACCACCATCACCACCACTACCACCTGGGCAATGGGACGCTCAGGG  
 CCCCCGGGCCAGCCCGGAGATCCAGGACAGGGATGCCAATGGGTCCC GCCGGCTCATGCTGCCACCACC  
 CTCGACGCCTGCCCTCTCCGGGGCCCCCTGGTGGCGCAGAGTCTGTGCACAGCTTCTACCATGCCGAC  
 TGCCACTTAGAGCCAGTCCGCTGCCAGGCGCCCCCTCCAGGTCCCCATCTGAGGCATCCGGCAGGACTG  
 TGGGCAGCGGGAAGGTGTATCCCACCGTGCACACCAGCCCTCCACCGAGACGCTGAAGGAGAAGGCACT  
 AGTAGAGGTGGCTGCCAGCTCTGGGCCCAACCCTCACCAGCTCAACATCCCACCCGGGCCCTACAGC  
 TCCATGCACAAGCTGCTGGAGACACAGAGTACAGGTGCCTGCCAAAGCTTTGCAAGATCTCCAGCCCTT  
 GCTTGAAAGCAGACAGTGGAGCCTGTGGTCCAGACAGCTGCCCTACTGTGCCCGGGCCGGGCAGGGGA  
 GGTGGAGCTCGCCGACCTGAAATGCCTGACTCAGACAGCGAGGCAAGTTATGAGTTCACACAGGATGCC  
 CAGCACAGCGACCTCCGGGACCCCCACAGCCGGCGGAACGGAGCCTGGGCCAGATGCAGAGCCAGCT  
 CTGTGCTGGCCTTCTGGAGGTAATCTGTGACACCTTCCGAAAGATTGTGGACAGCAAGTACTTTGGCCG  
 GGGAAATCATGATCGCCATCCTGGTCAACACACTCAGCATGGGCATCGAATACCACGAGCAGCCCGAGGAG  
 CTTACCAACGCCCTAGAAATCAGCAACATCGTCTTACCAGCCTCTTGGCCTGGAGATGCTGCTGAAGC  
 TGCTTGTGTATGGTCCCTTTGGTACATCAAGAATCCCTACAACATCTTCGATGGTGTATTGTGGTGT  
 CAGCGTGTGGGAGATCGTGGGCCAGCAGGGGGCGGCCTGTGGTGTGCGGACCTTCCGCTGATGCGT  
 GTGCTGAAGCTGGTGCCTTCTGCCGGCGCTGCAGCGGAGCTGGTGGTGTCTGAAGACCATGGACA  
 ACGTGGCCACCTTCTGCATGCTGCTTATGCTCTTCATCTTCAGCATCTGGGCATGCATCTCTT  
 CGGCTGCAAGTTTGCCTCTGAGCGGGATGGGGACACCCTGCCAGACCGGAAGATTTTGACTCCTTGCTC  
 TGGGCCATCGTCACTGTCTTTCAGATCTGACCCAGGAGGACTGGAACAAAGTCTCTACAATGGTATGG  
 CCTCCAGTCTGCTGGGGCGCCCTTATTTTATTGCTTTCATGACCTTCCGCAACTACGTGCTCTTCAA  
 TTTGCTGGTCCGCTTCTGGTGGAGGGCTTCCAGGCGGAGGAAATCAGCAACCGGAAGATGCGAGTGA  
 CAGTTAAGCTGTATTAGCTGCCTGTGACTCCCAGGGGGAGATGCCAACAAAGTCCGAATCAGAGCCCG  
 ATTTCTTCTCACCAGCCTGGATGGTGTGATGGGGACAGGAAGAAGTCTTGGCCTTGGTGTCCCTGGGAGA  
 GCACCCGGAGCTGCGGAAGAGCCTGTGCGCCTCTCATCATCCACAGCGCCGCCACCCATGTGCGCTG  
 CCCAAGAGCACCAGCACGGCCCTGGGCGAGGCGCTGGGCCCTGCGTCCGCGCCGACCAGCAGCAGCGGT  
 CGGCAGAGCCTGGGGCGGCCACGAGATGAAGTACCAGCCAGCGCCGAGCTCTCCGACAGCCCTG  
 GAGCGTGCAGCAGCTGGACCAGCAGGCGCTCCAGCCGGAACAGCCTCGGCCGTGACCCAGCCTGAAG  
 CGGAGAAGCCCAAGTGGAGAGCGGCGGTCCCTGTTGTGCGGAGAAGGCCAGGAGGCCAGGATGAAGAGG  
 AGAGCTCAGAAGAGGAGCGGGCCAGCCCTGCGGGCAGTGACCATCGCCACAGGGGTCCCTGGAGCGGA  
 GGCAAGAGTTCCCTTTCAGCTGCCAGACACTGCAGGTGCCAGGGCTGCATCGACTGCCAGTGGCCGA  
 GGGTCTGCTTCTGAGCACCAGGACTGCAATGGCAAGTCCGCTTCCAGGGCGCTGGCCGGGCCCTGCGGC  
 CTGATGACCCCCACTGGATGGGGATGACGCCGATGACGAGGGCAACCTGAGCAAAGGGGAACGGGTCCG  
 CGCGTGGATCCGAGCCCGACTCCCTGCCTGCTGCCTCGAGCGAGACTCCTGGTACGCTACATCTCCCT  
 CCTCAGTCCAGGTTCCGCTCCTGTGTCACCGGATCATCACCACAAGATGTTCCGACCAGTGGTCCCTG  
 TCATCATCTTCTTAAGTGCATCACCATCGCCATGGAGCGCCCCAAAATTGACCCCCACAGCGCTGAACG  
 CATCTTCTGACCCTCTCCAATTACATCTTACCAGCAGTCTTCTGGCTGAAATGACAGTGAAGGTGGT  
 GCACTGGGCTGGTGTCTCGGGGAGCAGGCGTACCTGCGGAGCAGTTGGAACGTGCTGGACGGGCTGTTG  
 TGCTCATCTCCGTCATCGAATTCTGGTGTCCATGGTCTCTGACAGCGGCCAACAGATCCTGGGCATGCT  
 GAGGGTGTGCGGCTGCTGCGGACCTGCGCCGCTCAGGGTATCAGCCGGGCGCAGGGGCTGAAGCTG  
 GTGGTGGAGACGCTGATGCTCACTGAAACCCATCGGCAACATTGTAGTCATCTGCTGTGCTTCTTCA  
 TCAATTTTCGATCTTGGGGTGCAGCTCTTCAAAGGGAAGTTTTTCGTGTGCCAGGGCGAGGATACCAG  
 GAACATCACCAATAAATCGGACTGTGCCAGGCGGATACCGGTGGGTCCGGCACAAGTACAACCTTGGAC  
 AACCTTGGCCAGGCCCTGATGTCCTGTTCGTTTTGGCTCCAAGGATGGTTGGTGGACATCATGTACG  
 ATGGGCTGGATGCTGTGGCGTGGACCAGCAGCCATCATGAACCACAACCCCTGGATGCTGCTGACTT  
 CATCTCGTTCTGCTCATTGTGGCTTCTTTGCTGAAATGTTTGGGTGTGGTGGTGGAGAATTC  
 CACAAGTGTCCGAGCACCAGGAGAAGAGGAGGCCCGGGCGGGAGGAGAAGCGCTACGAAGACTGG  
 AGAAAAAGAGAAGGAATCTAATGCTGGACGATGTAATTGCTTCCGGCAGCTCAGCCAGCGCTGCGTCAGA  
 AGCCAGTGCAAACCTTACTACTCCGACTACTCCGCTTCCGGCTCCTCGTCCACCATTGTGCACCAGC  
 CACTACCTGGACCTTTCATCACAGGTGTATCGGGTGAACGTGGTACCATGGCCATGGAGCACTACC  
 AGCAGCCCCAGATTCTGGATGAGGCTCTGAAGATCTGCAACTACATCTTCACTGTGATCTTTGCTTGG  
 GTCAGTTTTCAAACCTTGTGGCCTTTGGTTCCGTCGGTCTTCCAGGACAGGTGGAACAGCTGGACCTG  
 GCCATTGTGCTGTCCATCATGGGCATCAGCTGGAGGAAATCGAGGTCAACGCTCGCTGCCATCA

ACCCACCATCATCCGCATCATGAGGGTCTGCGCATTGCCCGAGTGCTGAAGCTGCTGAAGATGGCTGT  
GGGCATGCGGGCGCTGCTGGACACGGTATGCAGGCCCTGCCAGGTGGGGAACCTGGGACTTCTCTTC  
ATGTTGTTGTTTTTCATCTTTGCAGCTCTGGGCGTGGAGCTCTTTGGAGACCTGGAGTGTGACGAGACAC  
ACCCCTGTGAGGGCCTGGGCCGTATGCCACCTTTGGAACCTTTGGCATGGCCTTCTAACCCCTCTCCG  
AGTCTCCACAGGTGACAATTGGAATGGCATTATGAAGGACACCCCTCCGGGACTGTGACCAGGAGTCCACC  
TGCTACAACACGGTCATCTCGCCTATCTACTTTGTCTTTCGTGCTGACGGCCAGTTCGTGCTAGTCA  
ACGTGGTGATCGCCGTGCTGATGAAGCACCTGGAGGAGAGCAACAAGGAGGCCAAGGAGGAGGCCGAGCT  
AGAGGCTGAGCTGGAGCTGGAGATGAAGACCCTCAGCCCCAGCCCCACTCGCCACTGGGCAGCCCCTC  
CTCTGGCCTGGGGTCGAGGGCCCCGACAGCCCCGACAGCCCCAAGCCTGGGGCTCTGACCCAGCGGCC  
ACGCGAGATCAGCCTCCCACTTTCCCTGGAGCACCCACGATGCAGCCCCACCCACGGAGCTGCCAGG  
ACCAGACTTACTGACTGTGCGGAAGTCTGGGGTCAAGCCGACTCTCTGCCAATGACAGCTACATG  
TGTGCGCATGGGAGCACTGCCGAGGGGCCCTGGGACACAGGGCTGGGGCTCCCCAAGCTCAGTCAG  
GCTCCGTCTTGTCCGTTCACTCCAGCCAGCAGATACCAGCTACATCCTGCAGCTTCCAAAGATGCACC  
TCATCTGCTCCAGCCCCACAGCGCCCCAACCTGGGGCACCATCCCCAACTGCCCCACCAGGACGCTCC  
CCTTTGGCTCAGAGGCCACTCAGGCGCCAGGCAGCAATAAGGACTGACTCCTTGGAGTTTCCAGGGTCTGG  
GCAGCCGGAAGACCTGCTGGCAGAGGTGAGTGGGCCCTCCCCGCCCTGGCCCGGGCCTACTCTTCTG  
GGCCAGTCAAGTACCCAGGCACAGCAGCACTCCCGCAGCCACAGCAAGATCTCCAAGCAGATGACCCCG  
CCAGCCCCCTTGGCCAGGCCAGAACCCAACTGGGGCAAGGGCCCTCCAGAGACCAGAAGCAGCTTAGAGT  
TGGACACGGAGCTGAGCTGGATTTAGGAGACCTCCTGCCCTGGCGGCCAGGAGGAGCCCCATCCCC  
ACGGGACCTGAAGAAGTGTACAGCGTGGAGGCCAGAGCTGCCAGCGCCGGCCTACGTCTGGCTGGAT  
GAGCAGAGGAGACTCTATCGCCGTGAGTGCCTGGACAGCGGCTCCCAACCCACCTGGGCACAGACC  
CCTCTAACCTTGGGGGCCAGCCTCTTGGGGGCCCTGGGAGCCGGCCCAAGAAAAAACTCAGCCCGCTAG  
TATCACCATAGACCCCCCGAGAGCCAAGGTCTCGGACCCCGCCAGCCCTGGTATCTGCCTCCGGAGG  
AGGGCTCCGTCCAGCGACTCCAAGGATCCCTTGGCCTCTGGCCCCCTGACAGCATGGCTGCCTCGCCCT  
CCCCAAGAAAGATGTGCTGAGTCTCTCCGTTTATCCTCTGACCCAGCAGACCTGGACCC

ACGCGTACGCGGCCGCTCGAG – GFP Tag – GTTTAA

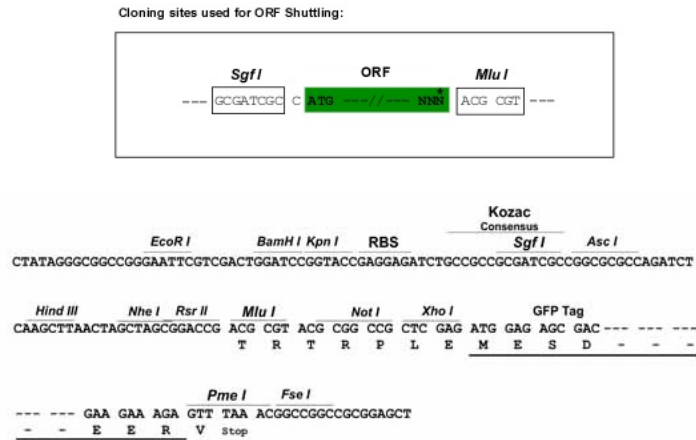
**Protein Sequence:** >RG213919 representing NM\_198384  
 Red=Cloning site Green=Tags(s)

MDEEDGAGAEESGQPRFSMRLNDLSGAGGRPGPGSAEKDPGSADSEAEGLPYPALAPVVFVYLSQDSRP  
 RSWCLRTVCNPFERISMLVILLNCVTLMGFRPCEDIACDSQRCRILQAFDDFIFAFFAVEMVVKMVALG  
 IFGKCCYLGDWNRLDFFVIAGMLEYSLDLQNVSFSAVRTVRVLRPLRAINRVPSMRILVTLTLLDTPM  
 LGNVLLLCFFVFFIFGI VGVQLWAGLLRNRCFLPENFSLPLSVDLERYYTENEDESPFICSPRENGMR  
 SCRSVPTLRGDGGGPPCGLDYEAYNSSNTTCVNNWQYYTNC SAGEHNPFGAINFDNIGYAWIAIFQV  
 ITLEGWVDIMYFVMDAHSFYNFIFYFILLIIVGSFFMINLCLVVIATQFSETKQRESQLMREQRVRFLSNA  
 STLASFSEPGSCYEELLYLVYILRKAARRLAQVSRAAGVRVGLLSSPAPLGGQETQPSSSCSRSHRRLS  
 VHHLVHHHHHHHHYHLGNGLRAPRASPEIQDRDANGSRRLMLPPPSTPALSGAPPGGAESVHSFYHAD  
 CHLEPVRCAQAPPRSPSEASGRTVGSGKVVYPTVHTSPPPETLKEKALVEVAASSGPPTL TSLNIPPGPYS  
 SMHKLLETQSTGACQSSCKISSPCLKADSGACGPDSCPYCARAGAGEVELADREMPDSDSEAVYEFQDA  
 QHSDLRDPHSRRQRSLGPAEPSSVLAFWRLICDTFRKIVDSKYFGRGIMIAILVNTLSMGIEYHEQPEE  
 LTNALEISNIVFTSLFALEMLLKL VYGPFYIKNPYINIFDGVIVVISVWEIVGQGGGLSVLRTFRMLR  
 VLKLVRFALPQRLVVLMTMDNVATFCMLLMFIFIFISILGMHLFGCKFASERDGTLPDRKNFDSLL  
 WAI VTVFQILTQEDWNKVL YNGMASTSSWAALYFIALMTFGNYVLFNLLVAILVEGFQAEIISKREDASG  
 QLSQIQLPVDSQGGDANKSESEPDFSPSLDGDGDRKKCLALVSLGEHPELRKSLLPPLIHTAATPMSL  
 PKSTSTGLGEALGPASRRTSSSGSAEPGAAHEMKSPPSARSSPHSPWSAASSWTSRRSSRNSLGRAPSLK  
 RRSVSGERRSLLSGEGQESQDEEESSEERASPAAGSDHRHRGSLEREAKSSFDPDLPDLPVGLHRTASGR  
 GSASEHQDCNGKSASGRALARALRPDDPPLDGDADDEGNLSKGERVRAWIRARLPACCLERDSWSAYIFP  
 PQSRFRLLCHRIITHKMFHDVVLVIIFLNCITIAMERPKIDPHSAERIFLTL SNYIFTAVFLAEMTVKVV  
 ALGWCFGEQAYLRSSWNVLDGLLVLISVIDILVSMVSDSGTKILGMLRVLRLRLRTRPLRVISRAQGLKL  
 VVETLMSLKPIGNIVVICCAFFIIFGILGVQLFKGKFFVCQGEDTRNITNKSDCAEASYSRWRHKYNFD  
 NLGQALMSL FVLASKDGWVDIMYDGLDAVGVQQPIMNHNPMMLLYFISFLLIVAFFVLNMFVGVVVENF  
 HKCRQHQEEEEARRREEKRLRRLLEKKRRNLMLDDVIASGSSASAASEAQCKPYSDYSRFRLLVHHLCTS  
 HYLDLFIITGVIGLNVVTMAMEHYQQPQILDEALKICNYIFTVIFVLESVFKLVAFGFRFFQDRWNQLDL  
 AIVLLSIMGITLEEIEVNASLPINPTIIRIMRVLRIARVLKLLKMAVGMRALLDTVMQALPQVGNLGLLF  
 MLLFFIFAALGVELFGDLECDETHPCEGLGRHATFRNFGMAFLTFRVSTGDNWNGIMKDTLRDCDQEST  
 CYNTVISPIYFVSFVLTAQFVLVNVVIAVLMKHLEESNKEAKEEAELEAELEEMKTLSPQPHSPLGSPF  
 LWPVGEVGPDPSPKPGALHPAAHARSASHFSLHPTMQPHPTLPGDLLTVRKSQVSRTHSLPNDSYM  
 CRHGSTAEGPLGHRGWLPKAQSGSVLSVHSQPADTSYILQLPKDAPHLLQPHSAPTWTGTPKLP PPGRS  
 PLAQRPLRRQAARTDSDLVQGLGSRELLAEVSGSPPLARAYSFWGQSSSTAQAQHSRSHSKISKHMT  
 PAPCPGPEPNWKGPPETRSLELDTL SWISGDLLPPGGQEEPPSPRDLKCKYSVEAQSCQRRPTSWLD  
 EQRRHSIAVSCLDSGSQPHLGTDPNLGGQPLGGPGSRPKKLSPPSITIDPPESQGPRTPPSPGICLRR  
 RAPSSDSKDLASGPPDSMAASPSPKKDVLSLSGLSSDPADLDP

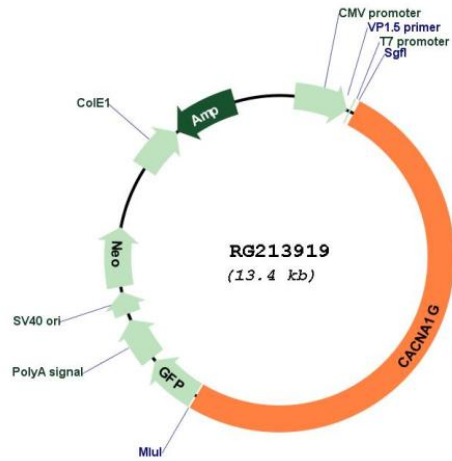
TRTRPLE - GFP Tag - V

**Restriction Sites:** SgfI-MluI

## Cloning Scheme:



## Plasmid Map:



ACCN: NM\_198384  
 ORF Size: 6852 bp

OTI Disclaimer: The molecular sequence of this clone aligns with the gene accession number as a point of reference only. However, individual transcript sequences of the same gene can differ through naturally occurring variations (e.g. polymorphisms), each with its own valid existence. This clone is substantially in agreement with the reference, but a complete review of all prevailing variants is recommended prior to use. [More info](#)

OTI Annotation: This clone was engineered to express the complete ORF with an expression tag. Expression varies depending on the nature of the gene.

<b>Components:</b>	The ORF clone is ion-exchange column purified and shipped in a 2D barcoded Matrix tube containing 10ug of transfection-ready, dried plasmid DNA (reconstitute with 100 ul of water).
<b>Reconstitution Method:</b>	<ol style="list-style-type: none"><li>1. Centrifuge at 5,000xg for 5min.</li><li>2. Carefully open the tube and add 100ul of sterile water to dissolve the DNA.</li><li>3. Close the tube and incubate for 10 minutes at room temperature.</li><li>4. Briefly vortex the tube and then do a quick spin (less than 5000xg) to concentrate the liquid at the bottom.</li><li>5. Store the suspended plasmid at -20°C. The DNA is stable for at least one year from date of shipping when stored at -20°C.</li></ol>
<b>RefSeq:</b>	<u>NM_198384.3</u>
<b>RefSeq Size:</b>	7985 bp
<b>RefSeq ORF:</b>	6855 bp
<b>Locus ID:</b>	8913
<b>UniProt ID:</b>	<u>O43497</u>
<b>Cytogenetics:</b>	17q21.33
<b>Protein Families:</b>	Druggable Genome, Ion Channels: Calcium, Transmembrane
<b>Protein Pathways:</b>	Calcium signaling pathway, MAPK signaling pathway, Type II diabetes mellitus
<b>Gene Summary:</b>	Voltage-sensitive calcium channels mediate the entry of calcium ions into excitable cells, and are also involved in a variety of calcium-dependent processes, including muscle contraction, hormone or neurotransmitter release, gene expression, cell motility, cell division, and cell death. This gene encodes a T-type, low-voltage activated calcium channel. The T-type channels generate currents that are both transient, owing to fast inactivation, and tiny, owing to small conductance. T-type channels are thought to be involved in pacemaker activity, low-threshold calcium spikes, neuronal oscillations and resonance, and rebound burst firing. Many alternatively spliced transcript variants encoding different isoforms have been described for this gene. [provided by RefSeq, Sep 2011]